

# B25DN ARTICULATED DUMP TRUCK

## AVAILABLE EQUIPMENT\*

### Cab

- ROPS/FOPS certification
- Protective rear window guard
- Tilt cab for service access
- Gas strut supported door
- Tinted safety glass
- Sliding windows
- Rear view mirrors - regular and wide angle
- Sun visor
- Wiper/washer with intermittent control
- Tilt and telescoping steering wheel
- Adjustable, air suspension seat with retractable seat belt
- Fold-away trainer seat with retractable seat belt
- HVAC climate control system with filtered and ducted air
- Rotating beacon
- 12 V power outlet/12 V cigarette lighter
- Ash tray
- Drinks holder
- Cooled/heated lunch box
- I-Tip programmable bin tip
- Sound insulated to 76 dB(A) to ISO 6394
- Radio/CD/Tape
- Memory Module
- Air horn

### MDU Features

- Operator / Site selected speed control
- Tipping counter
- Trip timer
- Trip distance
- Transmission gear selection
- Fuel Consumption
- Diagnostics
- Intermittent wiper timing control
- Speedo calibration for alternative tyre sizes
- Metric /Imperial unit selection
- Warning lights with audible buzzer

### Gauges

- Engine coolant temperature
- Engine oil pressure
- Transmission oil temperature
- Fuel
- Tachometer
- Battery voltage
- Hourmeter
- Odometer
- System air pressure

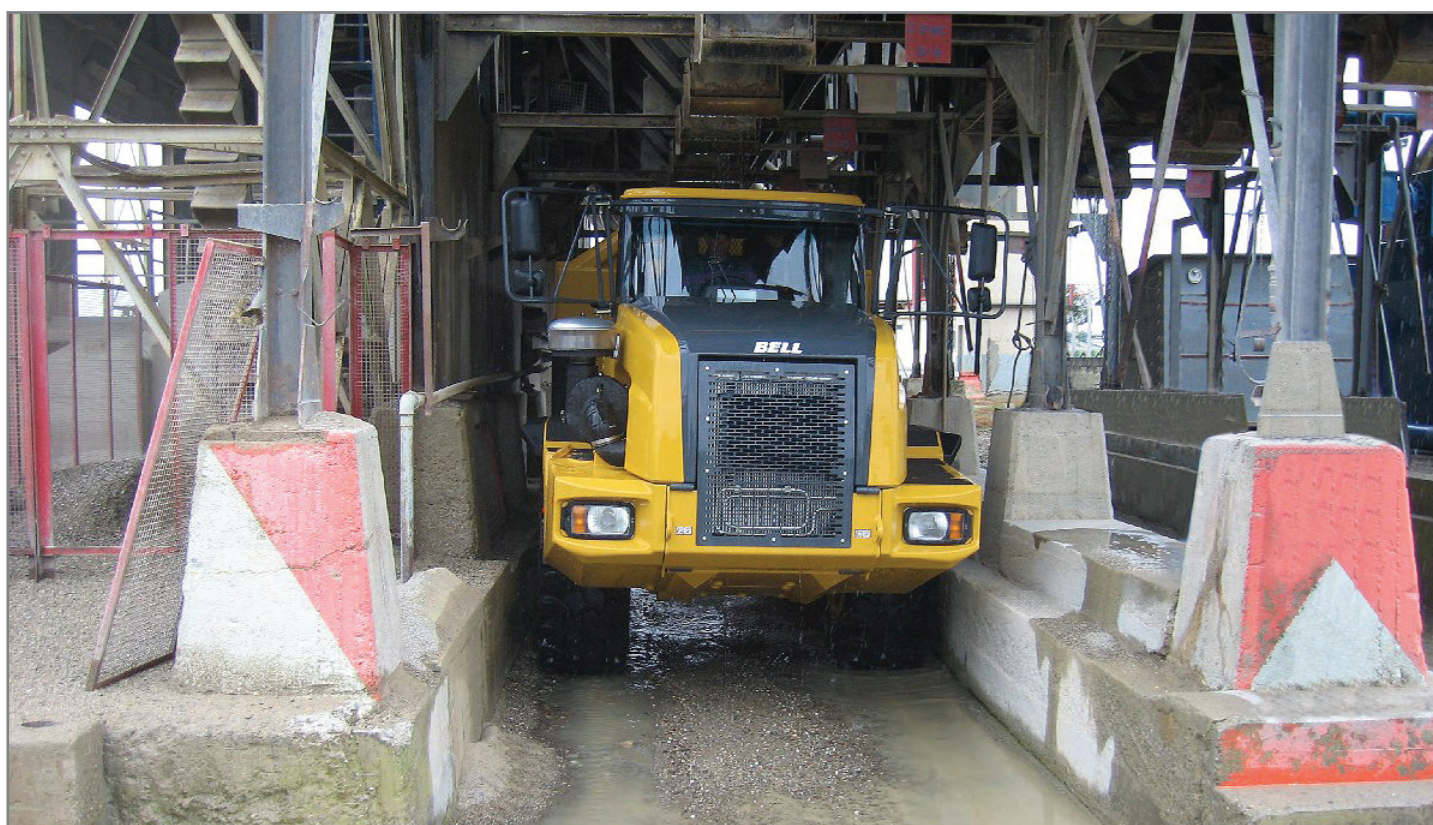
### Vehicle

- Ground driven emergency steering
- Bin safety prop
- Articulation lock
- Integral transmission output retarder with 6 settings

### Other

- (Factory or field installed)
- On Board Weigh System (OBW)
  - Electrically adjustable rearview mirrors - one per side
  - Groeneveld auto greasing system
  - Retractable sun visor
  - Exhaust body heating
  - Autogate
  - Body liners
  - Fleetmatic Satellite Monitoring System
  - Driver ID and immobiliser
  - Forward working lights
  - Artic reverse light
  - Fuel heater
  - External windshield visor
  - Headlight protection grills
  - Rear window wiper
  - Antenna mounting bracket
  - Provision for reverse camera
  - Wiggins quick fuelling system

\*standard specification for machines may vary according to region



# B25DN ARTICULATED DUMP TRUCK

## What makes the B25DN a great performer...

- **With a highly efficient power and drivetrain combined with low rolling resistance, the Bell B25DN delivers superior fuel efficiency**
- **High performance engine with increased power and torque and long service intervals**
- **Powerful hydraulic transmission retarder drastically cuts brake use extending pad life up to a factor of five**
- **Fewer scheduled service requirements**
- **Supreme driver comfort from a nitrogen over oil strut independent suspension system**
- **Deluxe cab - setting new standards in comfort, sound levels and simplicity in operation**
- **Tight turning circle**
- **Electronic component protection**
- **Easy service access**
- **Fast tip cycles**
- **Low ground pressure to work jobs other trucks can't**

BELL INTERNATIONAL: Tel: +27 (0) 35 907 9431

France Tel: +33 (0) 5 55 89 23 56 Germany Tel: +49 (0) 6631 / 91 13 0

Spain Tel: +34 91 879 60 19 South Africa Tel: +27 (0) 11 928 9700

UK Tel: +44 (0) 1283 712862 Russia Tel: +7 495 771 20 27

E-mail: sales@bellequipment.com • www.bellequipment.com

All dimensions are shown in millimetres, unless otherwise stated between brackets. Under our policy of continuous improvement, we reserve the right to change specifications and design without prior notice. Photographs featured in this brochure may include optional equipment.

**Strong Reliable Machines  
Strong Reliable Support**

**BELL**

# B25DN ARTICULATED DUMP TRUCK



**D SERIES**

- Gross power: 205 kw (275 hp)
- Gross torque: 1000 Nm (736 lbft) @ 1200 - 1600 rpm
- Load capacity: 13,8 m<sup>3</sup> SAE 2:1 heaped

**BELL**

# B25DN ARTICULATED DUMP TRUCK

**ENGINE** Mercedes Benz inline 6 cylinder, turbocharged, intercooled, low emission diesel engine

Gross power 205 kW (275 hp) @ 2 200 rpm  
 Net Power 198 kW (265 hp) @ 2 200 rpm  
 Gross torque 1 000 Nm (736 lbf) @ 1 200 -1 600 rpm  
 Net torque 970 Nm (714 lbf) @ 1 200 -1 600 rpm

Displacement 6,37 litres (389 cu.in)  
 Fuel tank capacity 340 l (90 US gal)  
 Auxiliary Brake Exhaust brake  
 Engine Valve Brake (EVB)

Certification OM 906 LA.111/4-00 meets Europe (EU) step2;  
 Non Regulated OM 906 LA.E3A/1 meets Europe (EU) step 3  
 Regulated

**TRANSMISSION** Engine mounted, fully automatic ZF planetary transmission with six forward gears and one reverse gear. Hydrodynamic with lock-up in all gears.

Torque Converter 6HP592C Ecomat 2 plus  
 Model 6HP592C Ecomat 2 plus  
 Control Type Electronic

**TRANSFER BOX** Remote mounted VGR

Manufacturer VGR  
 Model 13100  
 Layout Three in-line helical gears.  
 Output Differential 67/33 torque proportioning, Pneumatically lockable on the move.

**AXLES** High strength steel fabricated with spiral bevel type gears on the limited slip locking differential and heavy duty outboard planetary gears.

Model Bell 15T

**BRAKING SYSTEM** Dual circuit, full hydraulic actuation caliper brakes on all wheels

**SERVICE BRAKE** 164 kN (36,900 lbf)  
 Spring applied, air released driveline mounted disc.

**PARK & EMERGENCY** 396 kN (89,000 lbf)  
 Automatic exhaust brake and Engine Valve Brake (EVB)  
 442 kW (593 hp)

**AUXILIARY BRAKE** 442 kW (593 hp)

**Maximum retardation** 4.1

**WHEELS** Earthmover Tyre 23.5R25  
 Optional tyre 20.5R25



**FRONT SUSPENSION** Semi-independent, quad rubber mounted leading arm linkages supported by nitrogen and oil filled struts.

**REAR SUSPENSION** Pivoting walking beams, distributing equal load through laminated rubber suspension blocks. Each axle is coupled to the chassis by four rubber-bushed links for ideal vertical movement.

**HYDRAULIC SYSTEM** Full load sensing system incorporating a ground driven emergency steering pump. 184 l/min (48.6 gal/min)  
 Pressure 25 Mpa (3915 psi)  
 Filter 10 micron

**STEERING SYSTEM** Hydrostatically actuated, low effort, fast acting. Two double-acting steering cylinders  
 Lock to lock turns 4.1  
 Steering Angle +45°

**DUMPING SYSTEM** Two double-acting, single stage, dump cylinders

Raise Time 12 s  
 Lowering Time 6 s  
 Tipping Angle 70°

**PNEUMATIC SYSTEM** Air drier with heater and integral unloader valve, serving park brake and auxiliary functions  
 System Pressure 810 kPa (117 psi)

**ELECTRICAL SYSTEM** Voltage 24 V  
 Battery Type Two maintenance free permanently sealed 2 X 105 Ah  
 Battery Capacity 28 V 80 A  
 Alternator Rating

**VEHICLE SPEEDS**

1st	8	5
2nd	13	8
3rd	22	14
4th	31	19
5th	44	28
6th	53	33
R	8 km/h	5 mph

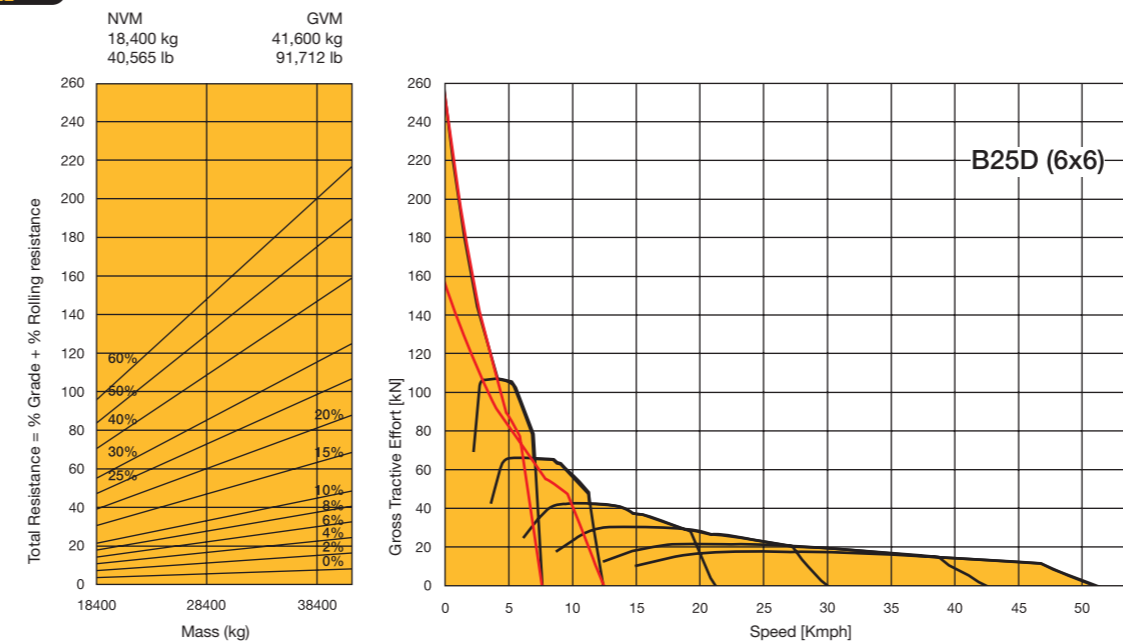


# B25DN ARTICULATED DUMP TRUCK

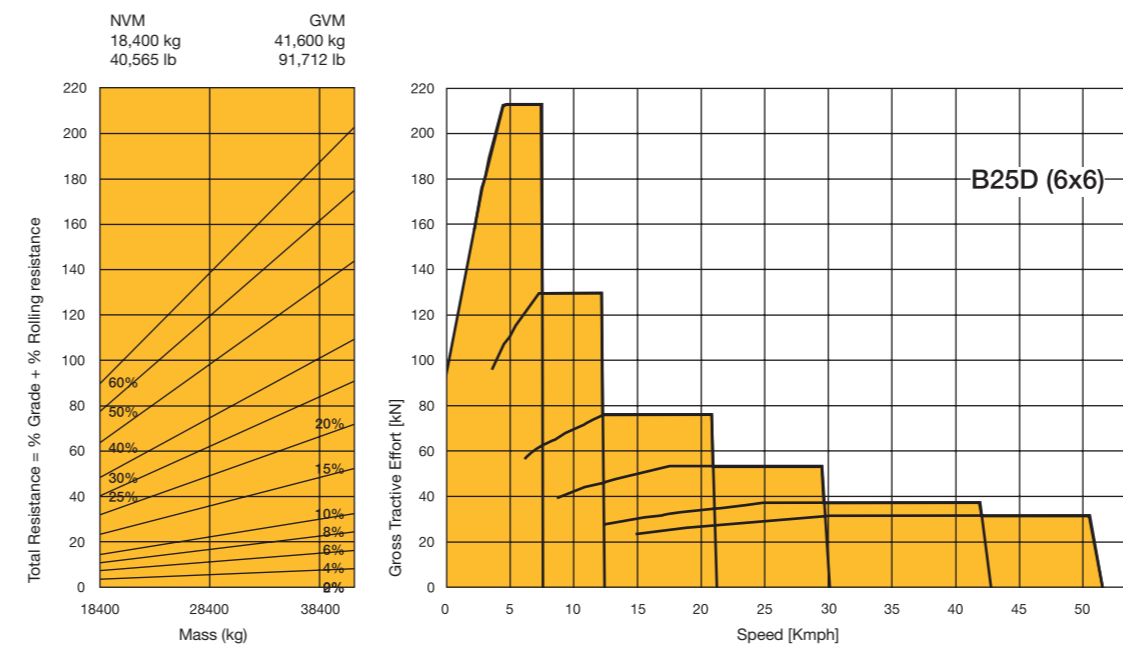
## LOAD CAPACITY & GROUND PRESSURE

WEIGHTS			GROUND PRESSURE			LOAD CAPACITY		
			At 15% sinkage of unloaded radius and specified weights					
<b>UNLADEN</b>	<b>kg</b>	<b>lbs</b>	<b>UNLADEN</b>	<b>kPa</b>	<b>psi</b>	<b>BODY</b>	<b>m³</b>	<b>cu.yd</b>
Front	9,620	21,208	Front	92	3.5	Struck Capacity	10.5	13.7
Middle	4,420	9,744	Middle	43	6	SAE 2:1 Capacity	13.8	18.1
Rear	4,360	9,612	Rear	41	6	SAE 1:1 Capacity	16.9	22.1
Total	18,400	40,565	Total			SAE 2:1 Capacity with Autogate	14.5	19
<b>LADEN</b>			<b>LADEN</b>			<b>Rated Payload</b>	23 200 kg	51,147 lbs
Front	12,860	28,351	Front	250	36			
Middle	14,400	31,747	Middle	303	44			
Rear	14,340	31,614	Rear	302	44			
Total	41,600	91,712						

## GRADEABILITY/RIMPULL



## RETARDATION



## DIMENSIONS

