

VOLVO EXCAVATORS

# EC380E

80,690-94,800 lb (36-43 t) 303 hp (226 kW)





# A PASSION FOR PERFORMANCE.

At Volvo Construction Equipment, we're not just coming along for the ride. Developing products and services that raise productivity – we are confident we can lower costs and increase profits for industry experts. Part of the Volvo Group, we are passionate about innovative solutions to help you work smarter – not harder.

## Helping you to do more

Doing more with less is a trademark of Volvo Construction Equipment. High productivity has long been married to low energy consumption, ease of use and durability. When it comes to lowering life-cycle costs, Volvo is in a class of its own.

## Designed to fit your needs

There is a lot riding on creating solutions that are suited to the particular needs of different industry applications. Innovation often involves high technology – but it doesn't always have to. Some of our best ideas have been simple, based on a clear and deep understanding of our customers' working lives.



## You learn a lot in 180 years

Over the years, Volvo has advanced solutions that have revolutionized the use of construction equipment. No other name speaks Safety louder than Volvo. Protecting operators, those around them and minimizing our environmental impact are traditional values that continue to shape our product design philosophy.

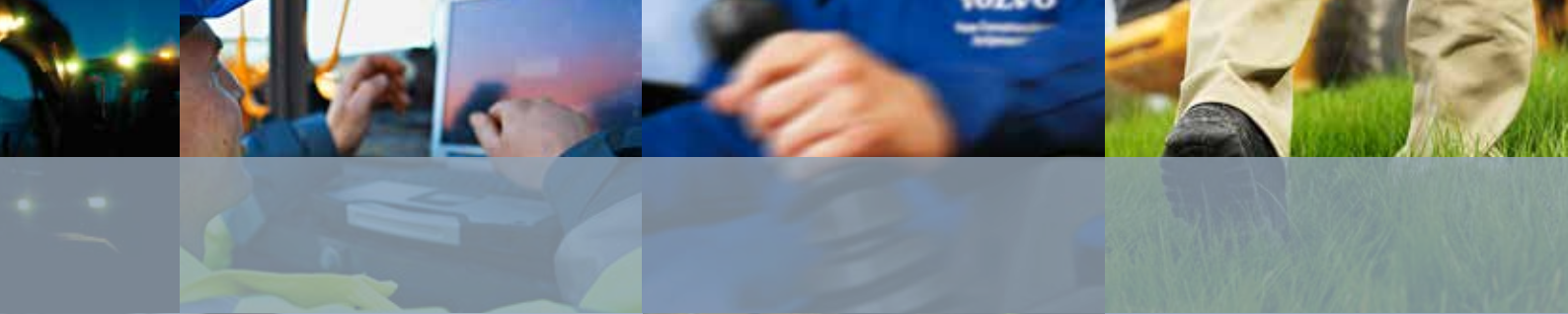
## We're on your side

We back the Volvo brand with the best people. Volvo is truly a global enterprise, one that is on standby to support customers quickly and efficiently – wherever they are.

## We have a passion for performance.







UD Trucks



Volvo Buses



Volvo Construction Equipment



Volvo Penta



Volvo Financial Services

# ELITE EFFICIENCY.

Fuel efficiency is at the center of the EC380E crawler excavator. With advanced technology including Volvo's unique ECO mode and a new electro-hydraulic control system, this production machine delivers a 9% improvement in fuel efficiency. Experience efficient production at its best with Volvo.

## Advanced hydraulics

The new electro-hydraulic system uses intelligent technology to control on-demand flow and reduce internal losses in the hydraulic circuit. This increases controllability, shortens cycle times and improves fuel efficiency – resulting in higher productivity and performance.

## Work modes

Volvo's unique, integrated work mode system now includes the G4 mode for optimum fuel efficiency and machine performance. Operators can choose the best work mode for the task at hand – select from I (Idle), F (Fine), G (General) and H (Heavy).



## Automatic idling system

Engine speed is reduced to idle when the controls are inactive for a pre-set amount of time (between 3 and 20 seconds). This reduces fuel consumption and noise.

## Auto engine shut down

To reduce fuel consumption, the engine will automatically switch off when the machine is inactive for a pre-set amount of time (five minutes is the default setting).

## Fuel consumption display

A gauge bar on the monitor measures both instantaneous fuel consumption and average fuel consumption. This allows machine owners and operators to monitor fuel usage on different job sites.





#### ECO mode



Volvo's unique ECO mode optimizes the hydraulic system to reduce flow and pressure losses – resulting in improved fuel efficiency without any loss of performance in most operating conditions. ECO mode is automatically selected but can be switched off via the keypad.



# BOOST YOUR PRODUCTIVITY.



## Human Machine Interface (HMI)

All machine interfaces – including the joysticks, keypad and LCD monitor – are ergonomically positioned and designed for optimum control and efficiency. For operator convenience and ease of use, the number of switches has been significantly reduced.

It's a fact that operators work more efficiently when they're given the best tools for the job. That's why, on top of being a superior production machine, the EC380E has an ergonomic design with ideally placed controls and switches. With built in comfort and optimized control, operators will work efficiently and productively all day long.

### Keypad

The optimally positioned keypad allows the operator to easily navigate through the LCD monitor and activate machine functions in a safe and comfortable way. The functionality of the camera, air conditioning and lights can be customized via the hot key – enabling the operator to select and save desired configurations.

### LCD monitor

The new, color, eight inch LCD monitor displays machine status information including fuel consumption data and service interval alerts – enabling increased uptime and high productivity. The user-friendly design is easy to read in any light conditions.



### Shortcut switch

The windshield wipers, camera, and audio mute function can be assigned to a shortcut switch located on the joystick. This allows the operator to easily control the selected function by simply pressing a switch.

### Seatbelt warning alarm

If the seatbelt is not fastened when the ignition key is turned, a sensor triggers an alarm which sounds for three seconds.

### Bluetooth®

For added convenience, operators can now connect a Bluetooth device to the machine.



# NON-STOP PRODUCTIVITY.

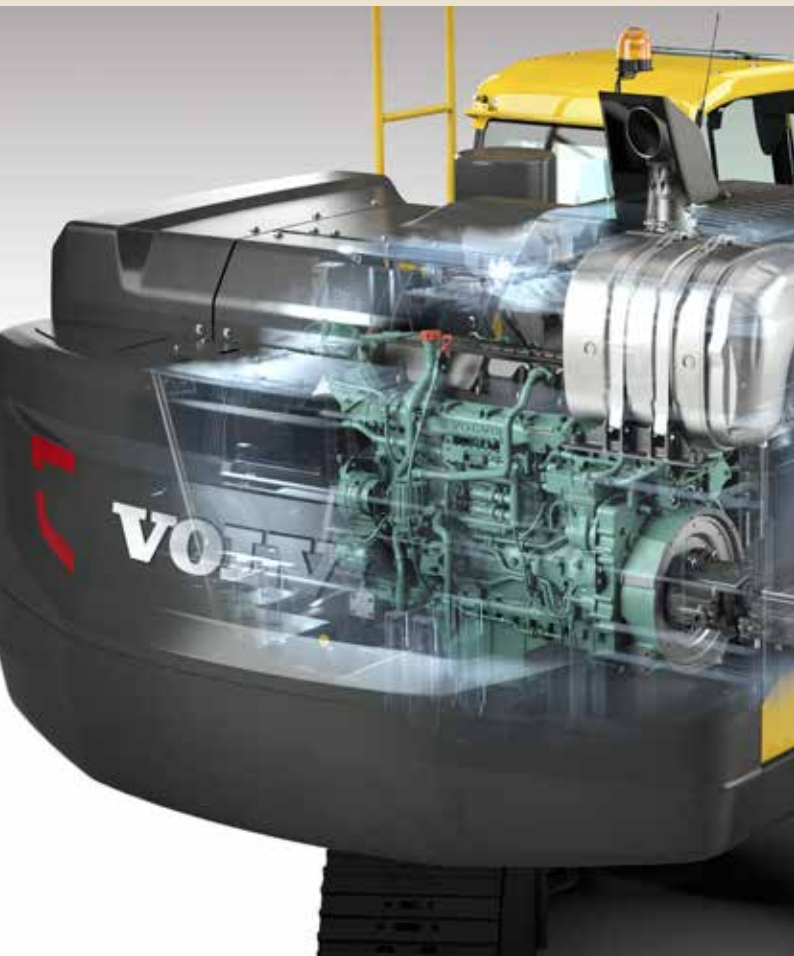
Experienced and skilled Volvo engineers have developed and rigorously tested Stage IV/Tier 4 Final engine systems that deliver the ultimate combination of high productivity and low fuel consumption. Benefit from Volvo's signature high torque at low rpm and experience superior performance and reduced fuel consumption.

## Volvo After Treatment System

During the fully automatic regeneration process, particulate matter in the Diesel Particulate Filter is oxidized at low exhaust temperatures via passive regeneration. Volvo uses Selective Catalytic Reduction

## Diesel-driven heater

The optional diesel-driven coolant heater helps to start the engine in low temperatures while simultaneously heating the cab. The heater can be set in advance to engage at a specific date and time.



technology where AdBlue®/Diesel Exhaust Fluid is heated to produce ammonia. This causes a chemical reaction which converts NO<sub>x</sub> to nitrogen and CO<sub>2</sub> – both of which are naturally found in the air. Neither process interrupts machine operation, performance or productivity.

® = registered trademark of the Verband der Automobilindustrie e.V. (VDA)

## Cooling fan

The hydraulically-driven, electronically controlled cooling fan regulates the temperature of the vital components. It automatically activates only when needed – reducing fuel consumption and noise. The optional reversible functionality – which blows air in the opposite direction – enables self-cleaning of the cooling units.





#### **Volvo engine**

Featuring proven, advanced technology and built on decades of experience, Volvo's robust D13 Stage IV/Tier 4 Final engine boasts more power while reducing both fuel consumption and emissions and delivering superior quality, reliability and durability.



# BUILT TO LAST.



## Reinforced undercarriage

With a strong three-piece undercarriage and a high strength tensile steel X-shaped frame, Volvo excavators are built to withstand tough conditions. For superior durability, the undercarriage components are reinforced – ensuring long life and high uptime.



From quarries to mass excavation, this heavy-duty production machine has been built to work on tough job sites. Featuring a robust, reinforced structure and high quality welding, the EC380E boasts superior strength and durability. Experience reliability you can count on with Volvo.

#### **Superstructure undercover**

The heavy-duty superstructure undercover plates increase durability by providing additional protection to the underside of the machine in tough applications – preventing damage from rock and debris.

#### **Doors and hinges**

Volvo's durable design features a rigid side door with a robust handle and hinges for superior durability.

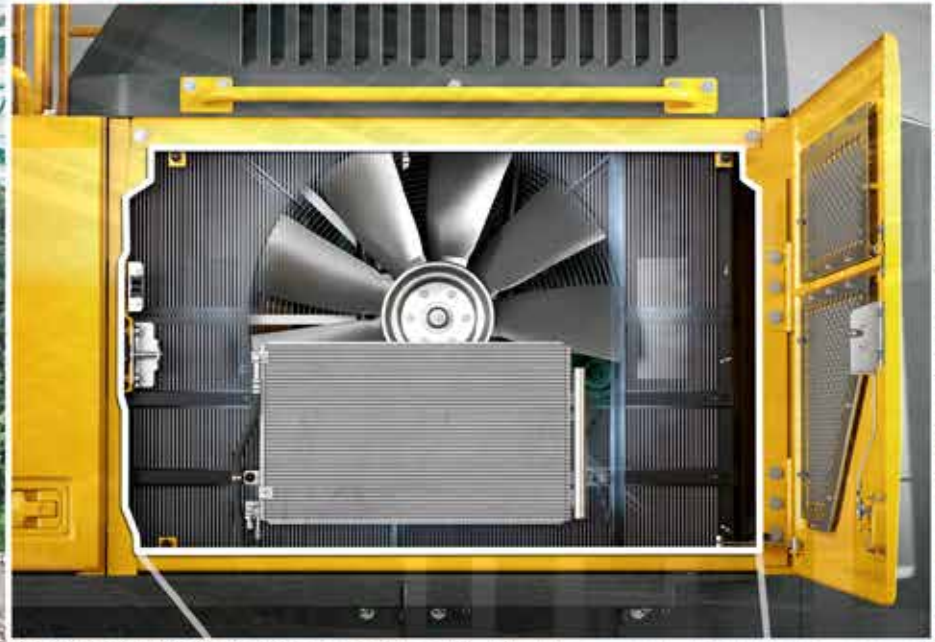


#### **Robust design**

The reinforced idler frame, track links and bottom rollers are built to withstand tough conditions for improved durability and reliability in demanding applications.



# UP YOUR UPTIME.



## Single module cooler

The radiator, charged air cooler and hydraulic oil cooler are situated side-by-side on a single layer to maximize efficiency, reduce blockages and aid cleaning. The system is easily accessed from ground level by simply opening the side door.



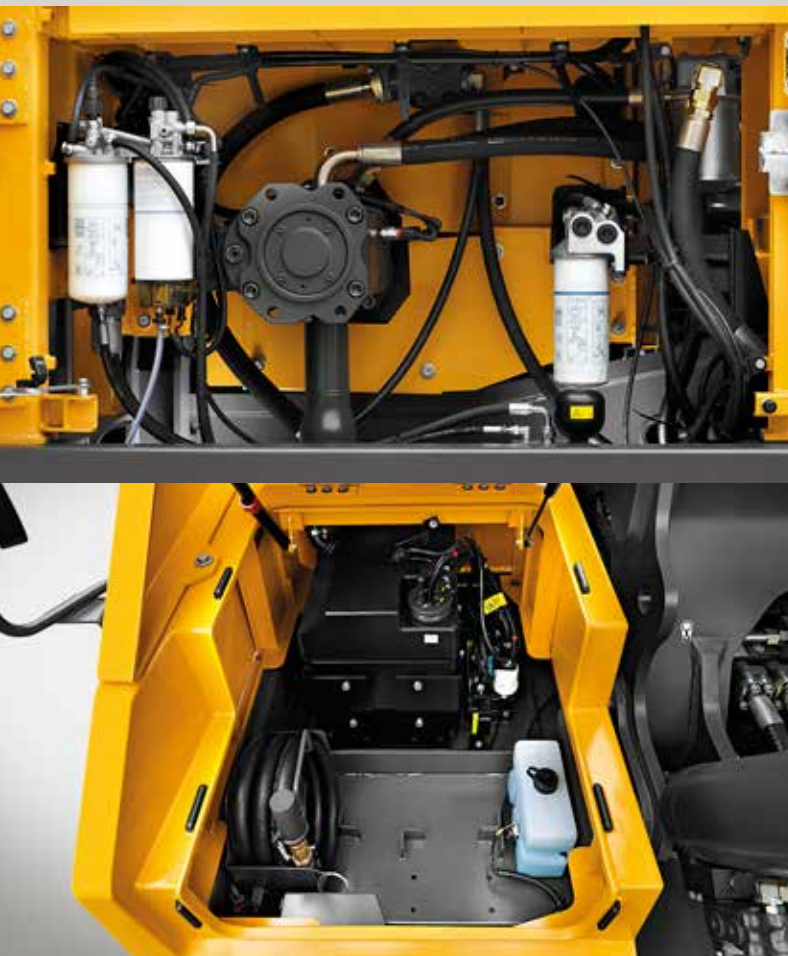
At Volvo we believe that maintaining your machine should be as quick and easy as possible. That's why our designers and engineers have developed innovative methods to make maintenance easy. With large, wide opening compartment doors and grouped service points, checks will be carried out faster and you'll get the most out of every operating shift.

#### **Service access**

Grouped filters are quick and easy to access from ground level. To facilitate fast servicing, grouped greasing points are easily accessed with the machine in one position.

#### **Anti-slip plates**

Punched anti-slip plates provide superior grip and increased safety. The design facilitates easy cleaning.



#### **Storage space**

A large storage compartment provides a safe and convenient location for items including a toolbox and grease can.



#### **Handrails**

Handrails and full size guardrails provide safe and easy access to the cab and superstructure.



# THE PERFECT MATCH.

Maximize your productivity and profitability with the EC380E and Volvo's durable range of attachments. Increase your versatility, access more applications and effectively perform a variety of tasks – all while experiencing faster cycle times and excellent control. Get the most out of your excavator with Volvo.

## Bucket range

Volvo's general purpose buckets are the perfect tool for digging and re-handling in soft to medium conditions. Heavy-duty buckets are intended for productive digging in compact materials. Both provide maximum productivity and long life.

## Optional auxiliary hydraulics

Factory fitted breaker and shear piping (X1) as well as tilt and rotator piping (X3) increase versatility by enabling a wide range of additional attachments to be used.



## S-type quick coupler

The Volvo S-type quick coupler is designed to work with Volvo attachments – delivering ultimate compatibility and unrivalled performance.

## Genuine Volvo wear parts

Volvo offers a selection of economic, replaceable wear parts including high quality teeth, segments, side cutters, adapters and shrouds to protect the bucket and ensure long life.

## Universal quick coupler

The Volvo universal quick coupler offers maximum versatility. It picks up a variety of attachments from various manufacturers and meets new safety regulations.





### Attachments

Volvo's durable attachments have been purpose-built to work in perfect harmony with Volvo machines, forming one solid, reliable unit. With functions and properties ideally matched, Volvo attachments are an integrated part of the excavator for which they're intended – delivering maximum productivity.



# QUALITY COUNTS.

## Safe access

Punched anti-slip plates, handrails and full size guardrails provide safe and easy access to the machine.



## HMI

All machine interfaces are ergonomically positioned and designed for optimum control and efficiency.

## Advanced hydraulics

New electro-hydraulic system and main control valve use intelligent technology to control on-demand flow for high performance and efficiency.

## Quick coupler

The Volvo quick coupler offers maximum versatility, picking up a wide variety of attachments.



## Attachments

Volvo's durable attachments have been purpose-built to deliver maximum productivity and long service life in combination with Volvo machines.



## Reinforced undercarriage

The undercarriage components are reinforced to ensure long life, high uptime and ultimate durability in tough conditions.





### Diesel Exhaust Fluid (DEF)

Volvo offers a total DEF solution that is quality assured, cost efficient and easily accessible. Contact your Volvo dealer for more information.

### LCD monitor

The new, eight inch LCD monitor clearly displays machine status information for easy operation and increased productivity.



### ECO mode

Volvo's unique ECO mode improves fuel efficiency without any loss of performance in most operating conditions.

### Service access

Grouped filters are quick and easy to access from ground level via large, wide compartment doors.



### Volvo engine

Volvo's D13 Stage IV/Tier 4 Final engine boasts more power while reducing both fuel consumption and emissions and delivering superior quality, reliability and durability.



### Single module cooler

The radiator, charged air cooler and hydraulic oil cooler are situated side-by-side on a single layer to maximize efficiency, reduce blockages and aid cleaning.

### Volvo After Treatment System

The automatic regeneration process takes place without interrupting machine operation, performance or productivity.



# ADDING VALUE TO YOUR BUSINESS.

Being a Volvo customer means having a complete set of services at your fingertips. Volvo can offer you a long-term partnership, protect your revenue and provide a full range of customer solutions using high quality parts, delivered by passionate people. Volvo is committed to the positive return of your investment.



## Complete Solutions

Volvo has the right solution for you. So why not let us provide all your needs throughout the whole life cycle of your

machine? By listening to your requirements, we can reduce your total cost of ownership and increase your revenue.



## Genuine Volvo Parts

Our attention to detail is what makes us stand out. This proven concept acts as a solid investment in your machine's future. Parts are extensively tested and approved because every part is vital for uptime and performance. Only by using Genuine Volvo Parts, can you be sure that your machine retains the renowned Volvo quality.



## Service Network

In order to respond to your needs faster, a Volvo expert is on their way to your job site from one of our Volvo facilities. With our extensive infrastructure of technicians, workshops and dealers, Volvo has a comprehensive network to fully support you using local knowledge and global experience.





### SERVICE PLAN

DAY01	DAY02	DAY03	DAY04	DAY05	DAY06	DAY07
						✓
			✓	✓		
	✓				✓	✓
		✓				
✓				✓		
		✓				



#### Customer Support Agreements

The range of Customer Support Agreements offer preventive maintenance, total repairs and a number of uptime services. Volvo uses the latest technology to monitor machine operation and status, giving you advice to increase your profitability. By having a Customer Support Agreement you are in control of your service costs.



# VOLVO EC380E IN DETAIL.

## Engine

The latest generation, Volvo engine Tier 4f (Stage IV) emissions compliant diesel engine fully meets the demands of the latest, emissions regulations. Featuring Volvo Advanced Combustion Technology (V-ACT), it is designed to deliver superior performance and fuel efficiency. The engine uses precise, highpressure fuel injectors, turbo charger and air-to-air intercooler, and electronic engine controls to optimize machine performance.

Air Filter: 3-stage with precleaner

Automatic Idling System: Reduces engine speed to idle when the control levers and pedals are not activated resulting in less fuel consumption and low cab noise levels.

Engine Tier 4f (Stage IV)		Volvo		D13J	
Max power at	r/s / r/min			28 / 1 700	
Net, ISO 9249/SAE J1349	kW / hp			225 / 302	
Gross, ISO 14396/SAE J1995	kW / hp			226 / 303	
Max torque at	Nm / r/min	lb.ft	1 692 / 1 275	1,248	
No. of cylinders			6		
Displacement	l cu.in	12.8		781	
Bore	mm in	131		5.16	
Stroke	mm in	158		6.22	

## Electrical system

High-capacity electrical system that is well protected. Waterproof double-lock harness plugs are used to secure corrosion-free connections. The main relays and solenoid valves are shielded to prevent damage. The master switch is standard.

Contronics provides advanced monitoring of machine functions and important diagnostic information.

Voltage	V	24		
Batteries	V	2 x 12		
Battery capacity	Ah	200		
Alternator	V / Ah	28 / 80		

## Swing system

The swing system uses an axial piston motors, driving a planetary gearbox for maximum torque. An automatic holding brake and anti-rebound valve are standard.

Max. slew speed	r/min	10.2		
Max. slew torque	kNm lbf.ft	130.5	96,250	

## Drive

Each track is powered by an automatic two-speed shift travel motor. The track brakes are multi-disc, spring-applied and hydraulic released. The travel motor, brake and planetary gears are well protected within the track frame.

Max. drawbar pull	kN lb	276.5	62,170	
Max. travel speed	km/h mph	3.4/5.3	2.1/3.3	
Gradeability	°	35		

## Undercarriage

The undercarriage has a robust X-shaped frame. Greased and sealed track chains are standard.

Track pads	2 x 50			
Link pitch	mm in	215.9	8.5	
Shoe width, triple grouser	mm in	600/	24/	
		600HD/	24HD/	
		700/	28/	
Shoe width, double grouser	mm in	800/900	32/36	
		600	24	
Bottom rollers	2 x 9			
Top rollers	2 x 2			

## Sound Level

Sound level in cab according to ISO 6396

LpA	dB(A)	71		
-----	-------	----	--	--

External sound level according to ISO 6395 and EU Noise

Directive (2000/14/EC) and 474-1:2006 +A1:2009

LwA	dB(A)	105		
-----	-------	-----	--	--

## Hydraulic system

The new electro-hydraulic system and new MCV (main control valve) use intelligent technology to control on-demand flow for high-productivity, high-digging capacity and excellent fuel consumption. The following important functions are included in the system for optimum performance:

Summation system: Combines the flow of both hydraulic pumps to ensure quick cycle times and high productivity.

Boom priority: Gives priority to the boom operation for faster raising when loading or performing deep excavations.

Arm priority: Gives priority to the arm operation for faster cycle times in leveling and for increased bucket filling when digging.

Swing priority: Gives priority to swing functions for faster simultaneous operations.

Regeneration system: Prevents cavitation and provides flow to other movements during simultaneous operations for maximum productivity.

Power boost: All digging and lifting forces are increased.

Holding valves: Boom and arm holding valves prevent the digging equipment from creeping.

Main pump, Type 2 x variable displacement axial piston pumps

Maximum flow	l/min	gpm	2 x 300	2 x 79
--------------	-------	-----	---------	--------

Pilot pump, Type Gear pump

Maximum flow	l/min	gpm	32.6	8.6
--------------	-------	-----	------	-----

## Hydraulic motors

Travel: Variable displacement axial piston motor with mechanical brake.

Slew: Fixed displacement axial piston motor with mechanical brake

Relief valve setting

Implement	MPa	psi	32.4/35.3	4,690/5,120
Travel circuit	MPa	psi	35.3	5,120
Slew circuit	MPa	psi	27.9	4,050
Pilot circuit	MPa	psi	3.9	570

## Hydraulic cylinders

Mono boom				2
Bore x Stroke	ø x mm	ø x in	160 x 1 530	6.3 x 60.2
Arm				1
Bore x Stroke	ø x mm	ø x in	175 x 1 700	6.9 x 66.9
Bucket				1
Bore x Stroke	ø x mm	ø x in	145 x 1 285	5.7 x 50.6
ME Bucket				1
Bore x Stroke	ø x mm	ø x in	160 x 1 250	6.3 x 49.2
LR Bucket				1
Bore x Stroke	ø x mm	ø x in	140 x 1 140	5.5 x 44.9

## Service refill capacities

Fuel tank	l	gal	620	164
Hydraulic system, total	l	gal	500	132
Hydraulic tank	l	gal	225	59
Engine oil	l	gal	42	11
Engine coolant	l	gal	60	16
Slew reduction unit	l	gal	6.5	1.7
Travel reduction unit	l	gal	2 x 6.8	2 x 1.8

## Cab

The operator's cab has easy access via a wide door opening.

The cab is supported on hydraulic dampening mounts to reduce shock and vibration levels. These along with sound absorbing lining provide low noise levels. The cab has excellent all-round visibility. The front windshield can easily slide up into the ceiling, and the lower front glass can be removed and stored in the side door.

Integrated air-conditioning and heating system:

The pressurized and filtered cab air is supplied by an automatically-controlled fan. The air is distributed throughout the cab from 14 vents.

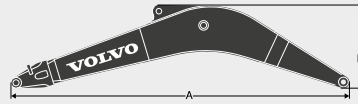
Ergonomic operator's seat: The adjustable seat and joystick console move independently to accommodate the operator.

The seat has 12 different adjustments plus a seat belt for the operator's comfort and safety.



# DIMENSIONS.

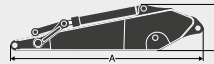
## Boom



Description	Unit		Long reach					
	m	in	6.2 ME	20'4"	6.45 HD	21'2"	8.5 LR	27'11"
Boom	m	in	6.2 ME	20'4"	6.45 HD	21'2"	8.5 LR	27'11"
A	mm	in	6 460	21'2"	6 700	22'	8 750	28'8"
B	mm	in	1 740	5'9"	1 800	5'11"	1 610	5'3"
Width	mm	in	820	2'8"	820	2'8"	820	2'8"
Weight	kg	lb	3 355	7,390	3 310	7,300	4 855	10,710

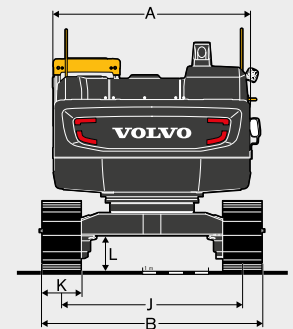
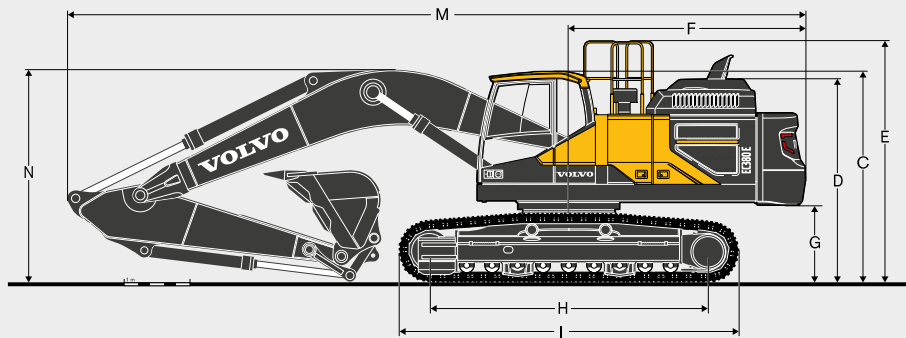
\* Includes arm cylinder, piping and pin

## Arm



Description	Unit		Long reach							
	m	in	2.6	8'6"	3.2 HD	10'6"	3.9	12'10"	5.0 LR	16'5"
Arm	m	in	2.6	8'6"	3.2 HD	10'6"	3.9	12'10"	5.0 LR	16'5"
A	mm	in	3 780	12'5"	4 360	14'4"	5 080	16'8"	6 180	20'3"
B	mm	in	1 145	3'9"	1 145	3'9"	1 145	3'9"	1 040	3'5"
Width	mm	in	560	1'10"	560	1'10"	560	1'10"	560	1'10"
Weight	kg	lb	2 050	4,520	2 180	4,810	2 300	5,070	2 525	5,570

\* Includes bucket cylinder, linkage and pin



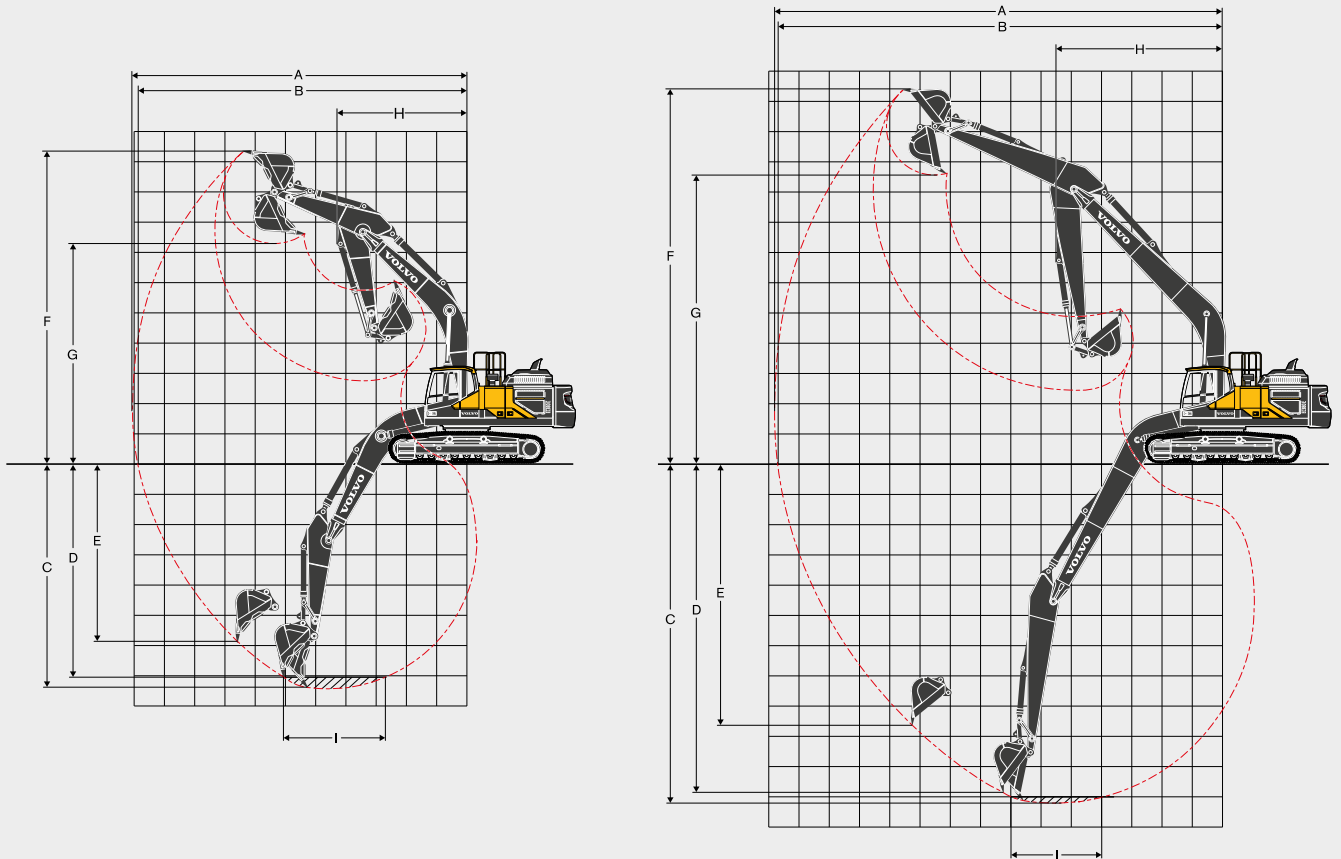
Description	Unit		EC380EL						EC380ELR			
	m	in	6.2 m, 20'4" ft in		6.45 m, 21'2" ft in		8.5 m, 27'11" ft in					
Boom	m	in	6.2	20'4"	6.45	21'2"	8.5	27'11"				
Arm	m	in	2.6	8'6"	2.6	8'6"	3.2	10'6"	3.9	12'10"	5.0	16'5"
A. Overall width of upper structure	mm	in	2 990	9'10"	2 990	9'10"	2 990	9'10"	2 990	9'10"	2 990	9'10"
B. Overall width	mm	in	3 540	11'7"	3 540	11'7"	3 540	11'7"	3 540	11'7"	3 540	11'7"
C. Overall height of cab	mm	in	3 220	10'7"	3 220	10'7"	3 220	10'7"	3 220	10'7"	3 220	10'7"
D. Overall height of engine hood	mm	in	3 465	11'4"	3 465	11'4"	3 465	11'4"	3 465	11'4"	3 465	11'4"
E. Overall height of handrail	mm	in	3 685	12'1"	3 685	12'1"	3 685	12'1"	3 685	12'1"	3 685	12'1"
F. Tail swing radius	mm	in	3 600	11'10"	3 600	11'10"	3 600	11'10"	3 600	11'10"	3 600	11'10"
G. Counterweight clearance *	mm	in	1 155	3'9"	1 155	3'9"	1 155	3'9"	1 155	3'9"	1 155	3'9"
H. Tumbler length	mm	in	4 240	13'11"	4 240	13'11"	4 240	13'11"	4 240	13'11"	4 240	13'11"
I. Track length	mm	in	5 180	17'	5 180	17'	5 180	17'	5 180	17'	5 180	17'
J. Track gauge	mm	in	2 740	9'	2 740	9'	2 740	9'	2 740	9'	2 740	9'
K. Shoe width	mm	in	800	32"	800	32"	800	32"	800	32"	800	32"
L. Min. ground clearance *	mm	in	500	1'8"	500	1'8"	500	1'8"	500	1'8"	500	1'8"
M. Overall length	mm	in	11 060	36'3"	11 310	37'1"	11 225	36'10"	11 270	37'	13 065	42'10"
N. Overall height of boom	mm	in	3 510	11'6"	3 455	11'4"	3 275	10'9"	3 485	11'5"	4 500	14'9"

\*Without shoe grouser



# SPECIFICATIONS.

## WORKING RANGE



Description	Unit	EC380E								EC380ELR	
		6.2 m, 20'4" ft in				6.45 m, 21'2" ft in				8.5 m, 27'11" ft in	
Boom		2.6	8'6"	2.6	8'6"	3.2	10'6"	3.9	12'10"	5.0	16'5"
A. Max. digging reach	mm ft in	10 300 33'9"	10 545 34'7"	11 070 36'4"	11 700 38'5"	12 405 40'8"	13 145 43'1"	13 915 45'7"	14 715 48'1"	15 545 50'8"	16 405 53'0"
B. Max. digging reach on ground	mm ft in	10 075 33'1"	10 325 33'11"	10 860 35'7"	11 500 37'9"	12 405 40'8"	13 145 43'1"	13 915 45'7"	14 715 48'1"	15 545 50'8"	16 405 53'0"
C. Max. digging depth	mm ft in	6 540 21'6"	6 785 22'3"	7 390 24'3"	8 085 26'6"	10 975 36'0"	11 715 38'1"	12 510 40'2"	13 360 42'6"	14 265 45'5"	15 225 49'0"
D. Max. digging depth (2.44 m/8' level)	mm ft in	6 180 20'3"	6 430 21'1"	7 060 23'2"	7 735 25'4"	10 665 35'	11 390 37'1"	12 165 39'1"	12 990 41'7"	13 865 44'2"	14 785 47'6"
E. Max. vertical wall digging depth	mm ft in	5 275 20'3"	5 430 17'10"	5 875 19'3"	6 675 21'11"	8 450 27'9"	9 285 30'6"	10 165 33'4"	11 090 36'5"	12 060 39'7"	13 075 43'10"
F. Max. cutting height	mm ft in	10 035 32'11"	10 170 33'4"	10 340 33'11"	10 635 34'11"	12 405 40'8"	13 145 43'1"	13 915 45'7"	14 715 48'1"	15 545 50'8"	16 405 53'0"
G. Max. dumping height	mm ft in	6 945 22'9"	7 095 23'3"	7 285 23'11"	7 560 24'10"	9 610 31'6"	9 915 32'6"	10 240 33'7"	10 590 34'9"	11 060 36'7"	11 560 39'10"
H. Min. front slew radius	mm ft in	4 115 13'6"	4 315 14'2"	4 275 14'0"	4 240 13'11"	5 730 18'10"	5 730 18'10"	5 730 18'10"	5 730 18'10"	5 730 18'10"	5 730 18'10"
<b>Digging forces with direct fit bucket</b>											
Bucket radius	mm ft in	1 810 5'11"	1 623 5'4"	1 623 5'4"	1 623 5'4"	1 623 5'4"	1 623 5'4"	1 623 5'4"	1 623 5'4"	1 598 5'3"	1 598 5'3"
Breakout force - bucket (Normal/Power boost)	SAE J1179 kN lb	214.5 48,220	198.0 44,510	198.0 44,510	198.0 44,510	198.0 44,510	198.0 44,510	198.0 44,510	198.0 44,510	148.3 33,340	148.3 33,340
	ISO 6015 kN lb	243.4 54,720	221.7 49,840	221.7 49,840	221.7 49,840	221.7 49,840	221.7 49,840	221.7 49,840	221.7 49,840	166.4 37,410	166.4 37,410
	SAE J1179 kN lb	265.4 59,665	242.7 54,560	242.7 54,560	242.7 54,560	242.7 54,560	242.7 54,560	242.7 54,560	242.7 54,560	166.4 37,410	166.4 37,410
Tearout force - dipper arm (Normal/Power boost)	SAE J1179 kN lb	187.7 42,195	195.9 44,040	161.9 36,395	141.3 31,765	120.0 26,975	105.0 23,560	90.0 20,250	75.0 16,740	60.0 13,430	45.0 10,120
	ISO 6015 kN lb	205.7 46,245	212.9 47,860	176.9 39,770	154.3 34,690	130.9 29,430	111.0 24,900	93.0 20,900	76.0 17,000	60.0 13,430	45.0 10,120
	ISO 6015 kN lb	193.9 43,590	201.1 45,210	166.0 37,320	144.4 32,460	122.0 27,435	103.0 23,200	86.0 19,100	71.0 15,700	56.0 12,400	41.0 9,100
Rotation angle, bucket	°	164		177		177		177		177	



**MACHINE WEIGHTS AND GROUND PRESSURE**

Description	Shoe width		Operating weight		Ground pressure		Operating weight		Ground pressure		Operating weight		Ground pressure		Operating weight		Ground pressure	
	mm	in	kg	lb	kPa	psi	kg	lb	kPa	psi	kg	lb	kPa	psi	kg	lb	kPa	psi
Triple grouser	600	24	38 356	84,570	70.0	10.1	38 856	85,680	70.9	10.3	39 406	86,890	71.9	10.4	40 732	89,810	74.3	10.8
	700	28	38 798	85,550	60.7	8.8	39 298	86,650	61.4	8.9	39 833	87,830	72.7	10.5	41 159	90,760	75.1	10.9
	800	32	39 248	86,540	53.7	7.8	39 748	87,640	54.4	7.9	39 848	87,860	62.3	9.0	41 174	90,790	64.4	9.3
	900	36	39 692	87,520	48.3	7.0	40 192	88,620	48.9	7.1	40 298	88,860	55.1	8.0	41 624	91,780	56.9	8.3
Triple grouser(HD)	600	24	38 783	85,520	70.7	10.3	39 283	86,620	71.6	10.4	40 742	89,840	49.5	7.2	42 068	92,760	51.2	7.4
Double grouser	600	24	38 633	85,190	70.5	10.2	39 133	86,290	71.4	10.3	39 683	87,500	72.4	10.5	41 009	90,420	74.8	10.8

EC380E with LC undercarriage, 6.45m/21'2" boom, 3.2m/10'6" arm, 1 574kg/3,470lb bucket, 6 200kg/13,670lb counterweight

EC380E with LC undercarriage, 6.45m/21'2" boom, 3.2m/10'6" arm, 1 574kg/3,470lb bucket, 6 700kg/14,770lb counterweight

EC380E with LC undercarriage, 6.45m/21'2" boom, 3.2m/10'6" arm, 1 574kg/3,470lb bucket, 7 250kg/15,980lb counterweight

EC380ELR with LC undercarriage, 8.5m/27'11" boom, 5.0m/16'5" arm, 1 096kg/2,415lb bucket, 8 200kg/18,080lb counterweight

**BUCKET SELECTION GUIDE**

Bucket type	Capacity		Cutting width		Weight		Teeth	EC380ELC				
								6.2m(20'4") Boom		6.45m(21'2") Boom		
								600mm(24") shoe, 6 700kg(14770lb) counterweight				
								2.6m(8'6")	2.6m(8'6")	3.2m(10'6")	3.9m(12'10")	
	L	yd <sup>3</sup>	mm	ft/in	kg	lb	EA					
Direct fit Buckets	General purpose	870	1,138	750	2'6"	1 176	2,593	3	C	C	C	C
		1 000	1,308	900	3'	1 271	2,802	4	C	C	C	C
		1 180	1,543	1 050	3'6"	1 460	3,218	4	C	C	C	C
		1 420	1,857	1 200	4'	1 612	3,553	5	C	C	C	C
		1 670	2,184	1 350	4'6"	1 726	3,806	5	C	C	C	C
		1 920	2,511	1 500	5'	1 866	4,115	5	C	C	C	C
	Heavy duty	2 330	3,048	1 750	5'9"	1 967	4,336	5	C	C	C	B
		870	1,138	750	2'6"	1 344	2,962	3	D	D	D	D
		1 000	1,308	900	3'	1 425	3,142	4	D	D	D	D
		1 420	1,857	1 200	4'	1 699	3,746	5	D	D	D	D
		1 670	2,184	1 350	4'6"	1 852	4,083	5	D	D	D	D
		1 920	2,511	1 500	5'	1 970	4,342	5	D	D	D	C
Direct fit Buckets (UQC interface)	General purpose	870	1,138	750	2'6"	1 176	2,593	3	C	C	C	C
		1 000	1,308	900	3'	1 271	2,802	4	C	C	C	C
		1 420	1,857	1 200	4'	1 514	3,338	5	C	C	C	C
		1 670	2,184	1 350	4'6"	1 629	3,591	5	C	C	C	C
		1 920	2,511	1 500	5'	1 866	4,115	5	C	C	C	B
		2 330	3,048	1 750	5'9"	1 967	4,336	5	C	B	A	X
	Heavy duty	870	1,138	750	2'6"	1 352	2,980	3	D	D	D	D
		1 000	1,308	900	3'	1 425	3,142	4	D	D	D	D
		1 420	1,857	1 200	4'	1 699	3,746	5	D	D	D	D
		1 670	2,184	1 350	4'6"	1 852	4,083	5	D	D	D	B
		1 920	2,511	1 500	5'	1 970	4,342	5	D	D	B	A
		2 330	3,048	1 750	5'9"	2 175	4,795	5	B	B	A	X
Quick coupler Buckets (S3 Quick coupler)	General purpose	1 000	1,308	900	3'	1 239	2,731	4	C	C	C	C
		1 180	1,543	1 050	3'6"	1 412	3,113	4	C	C	C	C
		1 420	1,857	1 200	4'	1 482	3,268	5	C	C	C	C
		1 670	2,184	1 350	4'6"	1 597	3,520	5	C	C	C	C
		1 920	2,511	1 500	5'	1 720	3,792	5	C	C	C	C
		2 330	3,048	1 750	5'9"	1 911	4,214	5	C	C	B	A
	Heavy duty	1 000	1,308	900	3'	1 393	3,071	4	D	D	D	D
		1 420	1,857	1 200	4'	1 648	3,633	5	D	D	D	D
		1 670	2,184	1 350	4'6"	1 791	3,949	5	D	D	D	D
		1 920	2,511	1 500	5'	1 921	4,235	5	D	D	D	B
		2 330	3,048	1 750	5'9"	2 119	4,673	5	C	B	B	A
		Quick coupler Buckets (UQC38 Quick coupler)	Heavy duty	830	1,086	750	2'6"	1 104	2,434	3	D	D
1 000	1,308			900	3'	1 202	2,650	3	D	D	D	D
1 240	1,622			1 100	3'8"	1 370	3,020	4	D	D	D	D
1 450	1,897			1 200	4'	1 435	3,164	4	D	D	D	D
1 670	2,184			1 350	4'6"	1 570	3,461	5	D	D	D	C
1 910	2,498			1 500	5'	1 667	3,675	5	D	D	D	B
Quick coupler	2 290	2,995	1 750	5'9"	1 830	4,034	5	C	B	B	A	
	2 530	3,309	1 900	6'3"	1 958	4,317	5	B	B	A	X	

X : Not recommended

**Maximum material density**

	kg/m <sup>3</sup>	lb/yd <sup>3</sup>	
A	1 200 - 1 300	2,000 - 2,200	Coal, Caliche, Shale
B	1 400 - 1 600	2,300 - 2,700	Wet earth and clay, Limestone, Sandstone
C	1 700 - 1 800	2,800 - 3,100	Granite, Wet sand, Well blasted rock
D	> 1 900	> 3,200	Wet mud, Iron ore

Please consult with your Volvo dealer for the proper match of buckets and attachments to suit the application.

The recommendations are given as a guide only, based on typical operation conditions.

Bucket capacity based on ISO 7451, heaped material with a 1:1 angle of repose.



# SPECIFICATIONS.

## LIFTING CAPACITY EC380ELC

Lifting capacity at the arm end without bucket.

For lifting capacity including bucket, simply subtract actual weight of the direct fit bucket or the bucket with quick coupler from the following values.

	Lifting hook related to ground level	1.5 m (5 ft)		3.0 m (10 ft)		4.5 m (15 ft)		6.0 m (20 ft)		7.5 m (25 ft)		9.0 m (30 ft)		Max. reach		
		Along UC	Across UC	Along UC	Across UC	Along UC	Across UC	Along UC	Across UC	Along UC	Across UC	Along UC	Across UC	Along UC	Across UC	Max.
Boom : 6.45m (21'2") Arm : 2.6m (8'6") Shoe : 800mm (32") CWT : 6 200kg (13,670lb)	7.5 m kg							*10 283	*10 283					*10 420	9 350	7.0 m
	25 ft lb							*22,670	*22,670					*23,030	21,080	22.7 ft
	6 m kg							*11 020	*11 020	*10 360	8 320			*10 360	7 530	8.0 m
	20 ft lb							*24,000	*24,000	*22,790	17,870			*22,840	16,780	25.9 ft
	4.5 m kg					*16 080	*16 080	*12 580	*11 380	*10 970	8 110			*10 230	6 610	8.5 m
	15 ft lb					*34,490	*34,490	*27,240	24,560	*23,930	17,480			*22,650	14,640	27.9 ft
	3 m kg							*14 430	10 800	*11 870	7 830			9 570	6 150	8.8 m
	10 ft lb							*31,200	23,330	*25,810	16,900			*21,140	13,580	28.9 ft
	1.5 m kg							*15 940	10 340	12 010	7 580			9 410	6 010	8.8 m
	5 ft lb							*34,500	22,320	25,870	16,360			*20,760	13,260	29.0 ft
	0 m kg							*21 850	15 340	16 650	10 090	11 830	7 420	9 730	6 180	8.6 m
	0 ft lb							*49,270	33,000	35,800	21,760	25,490	16,020	*21,450	13,630	28.2 ft
	-1.5 m kg			*14 880	*14 880	*21 890	15 380	*16 550	10 030	11 800	7 390			*10 660	6 740	8.1 m
	-5 ft lb			*33,980	*33,980	*47,540	33,090	35,650	21,630	25,440	15,970			*23,540	14,890	26.4 ft
	-3 m kg			*26 310	*26 310	*19 940	15 610	*15 270	10 160					*12 160	7 980	7.2 m
-10 ft lb			*57,220	*57,220	*43,210	33,580	*32,970	21,920					*26,830	17,730	23.5 ft	
-4.5 m kg			*20 930	*20 930	*16 070	*16 070							*12 110	11 090	5.8 m	
-15 ft lb			*45,000	*45,000	*34,370	*34,370							*26,620	25,020	18.8 ft	
Boom : 6.45m (21'2") Arm : 3.2m (10'6") Shoe : 800mm (32") CWT : 6 200kg (13,670lb)	7.5 m kg									*9 370	8 530			*8 200	*8 200	7.7 m
	25 ft lb									*20,657	18,805			*18,150	*18,150	24.9 ft
	6 m kg									*9 500	8 460			*7 980	6 800	8.5 m
	20 ft lb									*20,840	18,200			*17,600	15,130	27.8 ft
	4.5 m kg					*14 350	*14 350	*11 610	11 580	*10 260	8 220	*8 790	6 120	*8 060	6 040	9.1 m
	15 ft lb					*30,820	*30,820	*25,170	24,990	*22,370	17,700	*19,378	13,492	*17,750	13,380	29.7 ft
	3 m kg					*18 440	16 750	*13 580	10 970	*11 290	7 910	9 310	5 990	*8 390	5 650	9.3 m
	10 ft lb					*39,640	36,160	*29,380	23,670	*24,530	17,050	20,040	12,900	*18,470	12,480	30.6 ft
	1.5 m kg					*21 460	15 750	*15 330	10 430	12 060	7 610	9 160	5 850	8 640	5 520	9.4 m
	5 ft lb					*46,320	33,950	*33,180	22,520	25,960	16,430	19,720	12,610	*19,050	12,180	30.7 ft
	0 m kg					*22 610	15 330	*16 410	10 100	11 820	7 410	9 050	5 750	8 870	5 640	9.1 m
	0 ft lb					*48,990	32,990	*35,560	21,780	25,460	15,980			*19,560	12,450	29.9 ft
	-1.5 m kg			*15 110	*15 110	*22 370	15 250	16 510	9 960	11 720	7 320			9 580	6 070	8.6 m
	-5 ft lb			*34,210	*34,210	*48,540	32,810	35,500	21,480	25,250	15,790			*21,170	13,410	28.3 ft
	-3 m kg	*17 590	*17 590	*23 840	*23 840	*20 970	15 400	*15 880	10 010	11 800	7 380			*11 120	7 000	7.8 m
-10 ft lb	*39,430	*39,430	*54,050	*54,050	*45,430	33,130	*34,340	21,600	25,450	15,970			*24,680	15,530	25.6 ft	
-4.5 m kg			*24 300	*24 300	*17 980	15 770	*13 490	10 290					*11 830	9 100	6.6 m	
-15 ft lb			*52,380	*52,380	*38,670	33,970	*28,730	22,240					*26,100	20,420	21.3 ft	
Boom : 6.45m (21'2") Arm : 3.9m (12'10") Shoe : 800mm (32") CWT : 6 200kg (13,670lb)	9 m kg													*15,410	*15,410	23.3 ft
	30 ft lb															
	7.5 m kg									*8 160	*8 160			*6 470	*6 470	8.4 m
	25 ft lb									*18,070	*18,070			*14,300	*14,300	27.4 ft
	6 m kg									*8 510	*8 510	*7 680	6 320	*6 310	6 030	9.2 m
	20 ft lb									*18,670	18,530	*14,610	13,540	*13,930	13,410	30.2 ft
	4.5 m kg							*10 380	*10 380	*9 380	8 340	*8 850	6 210	*6 370	5 420	9.7 m
	15 ft lb							*22,510	*22,510	*20,450	17,960	*19,410	13,340	*14,030	12,010	31.9 ft
	3 m kg					*16 410	*16 410	*12 460	11 170	*10 510	7 990	9 370	6 030	*6 600	5 100	10.0 m
	10 ft lb					*35,300	*35,300	*26,960	24,090	*22,850	17,230	20,150	12,980	*14,530	11,250	32.7 ft
	1.5 m kg					*20 040	16 040	*14 440	10 550	*11 650	7 650	9 160	5 850	*7 040	4 980	10.0 m
	5 ft lb					*43,230	34,580	*31,270	22,760	*25,310	16,500	19,730	12,600	*15,500	10,980	32.8 ft
	0 m kg			*9 320	*9 320	*22 030	15 360	*15 870	10 110	11 810	7 390	9 000	5 700	*7 760	5 060	9.8 m
	0 ft lb			*21,210	*21,210	*47,680	33,080	*34,390	21,800	25,430	15,930	19,400	12,290	*17,100	11,150	32.1 ft
	-1.5 m kg	*9 510	*9 510	*14 220	*14 220	*22 500	15 120	16 440	9 880	11 640	7 230	8 930	5 630	8 500	5 370	9.3 m
-5 ft lb	*21,230	*21,230	*32,130	*32,130	*48,790	32,530	35,330	21,310	25,070	15,600	19,250	12,160	*18,760	11,860	30.6 ft	
-3 m kg	*14 830	*14 830	*20 550	*20 550	*21 740	15 150	*16 250	9 850	11 620	7 220			9 600	6 050	8.6 m	
-10 ft lb	*33,200	*33,200	*46,500	*46,500	*47,110	32,600	*35,180	21,240	25,050	15,580			*21,270	13,400	28.1 ft	
-4.5 m kg	*21 190	*21 190	*27 500	*27 500	*19 600	15 420	*14 770	10 010					*11 110	7 450	7.5 m	
-15 ft lb	*47,670	*47,670	*59,360	*59,360	*42,270	33,190	*31,750	21,600					*24,540	16,640	24.3 ft	
-6 m kg			*20 790	*20 790	*15 130	*15 130							*11 300	11 100	5.8 m	
-20 ft lb			*44,070	*44,070	*31,910	*31,910							*24,880	*24,880	18.4 ft	
Boom : 6.2m (20'4") Arm : 2.6m (8'6") Shoe : 800mm (32") CWT : 6 700kg (14,770lb)	7.5 m kg							*10 700	*10 700					*10 870	10 370	6.7 m
	25 ft lb							*23,660	*23,660					*24,030	23,440	21.6 ft
	6 m kg							*11 220	*11 220	*10 740	8 560			*10 760	8 230	7.7 m
	20 ft lb							*24,490	*24,490	*23,730	18,380			*23,740	18,350	25.0 ft
	4.5 m kg					*15 850	*15 850	*12 670	11 820	*11 200	8 400			*10 870	7 180	8.3 m
	15 ft lb					*34,060	*34,060	*27,470	25,490	*24,460	18,090			*23,960	15,910	27.1 ft
	3 m kg					*19 770	17 110	*14 470	11 260	*12 030	8 140			*10 310	6 670	8.6 m
	10 ft lb					*42,490	36,940	*31,310	24,310	*26,180	17,560			*22,780	14,730	28.1 ft
	1.5 m kg					*22 280	16 290	*15 980	10 800	12 420	7 900			*10 150	6 530	8.6 m
	5 ft lb					*48,130	35,110	*34,620	23,310	26,740	17,050			*22,370	14,390	28.2 ft
	0 m kg					*22 820	16 020	*16 750	10 540	12 250	7 750			*10 510	6 730	8.3 m
	0 ft lb					*49,480	34,470	*36,320	22,730	26,380	16,730			*23,180	14,830	27.3 ft
	-1.5 m kg			*17 770	*17 770	*22 010	16 040	*16 560	10 480	12 230	7 740			*11 600	7 370	7.8 m
	-5 ft lb			*40,440	*40,440	*47,770	34,500	*35,890	22,600	26,380	16,720			*25,630	16,300	25.5 ft
	-3 m kg			*26 490	*26 490	*19 850	16 270	*15 050	10 620					*12 530	8 860	6.9 m
-10 ft lb			*57,540	*57,540	*42,980	35,020	*32,410	22,930					*27,640	19,690	22.4 ft	
-4.5 m kg					*15 320	*15 320							*12 280	*12 280	5.4 m	
-15 ft lb					*32,540	*32,540							*26,950	*26,950	17.5 ft	

Notes: 1. Machine in "Fine Mode-F" (Power Boost) for lifting capacities. 2. The above loads are in compliance with SAE J1097 and ISO 10567 Hydraulic Excavator Lifting Capacity Standards. 3. Rated loads do not exceed 87% of hydraulic lifting capacity or 75% of tipping load. 4. Rated loads marked with an asterisk (\*) are limited by hydraulic capacity rather than tipping load.

### LIFTING CAPACITY EC380ELC

Lifting capacity at the arm end without bucket.

For lifting capacity including bucket, simply subtract actual weight of the direct fit bucket or the bucket with quick coupler from the following values.

	Lifting hook related to ground level	1.5 m (5 ft)		3.0 m (10 ft)		4.5 m (15 ft)		6.0 m (20 ft)		7.5 m (25 ft)		9.0 m (30 ft)		Max. reach		
		Along UC	Across UC	Along UC	Across UC	Along UC	Across UC	Along UC	Across UC	Along UC	Across UC	Along UC	Across UC	Along UC	Across UC	Max.
Boom : 6.45m (21'2") Arm : 2.6m (8'6") Shoe : 800mm (32") CWT : 6 700kg (14,770lb)	7.5 m kg							*10 283	*10 283					*10 420	9 660	7.0 m
	25 ft lb							*22,670	*22,670					*23,030	21,790	22.7 ft
	6 m kg							*11 020	*11 020	*10 360	8 600			*10 360	7 800	8.0 m
	20 ft lb							*24,000	*24,000	*22,790	18,500			*22,840	17,370	25.9 ft
	4.5 m kg					*16 080	*16 080	*12 580	*11 770	*10 970	8 400			*10 480	6 850	8.5 m
	15 ft lb					*34,490	*34,490	*27,240	25,390	*23,930	18,100			*23,100	15,190	27.9 ft
	3 m kg							*14 430	11 190	*11 870	8 120			9 870	6 390	8.8 m
	10 ft lb							*31,200	24,160	*25,810	17,520			21,790	14,110	28.9 ft
	1.5 m kg							*15 940	10 730	12 380	7 870			9 710	6 250	8.8 m
	5 ft lb							*34,500	23,150	26,670	16,990			21,410	13,790	29.0 ft
	0 m kg					*21 850	15 910	*16 690	10 470	12 200	7 710			10 030	6 430	8.6 m
	0 ft lb					*49,270	34,240	*36,180	22,590	26,290	16,650			22,120	14,170	28.2 ft
	-1.5 m kg			*14 880	*14 880	*21 890	15 960	*16 550	10 410	12 170	7 680			10 990	7 000	8.1 m
	-5 ft lb			*33,980	*33,980	*47,540	34,320	*35,870	22,460	26,230	16,600			24,280	15,470	26.4 ft
	-3 m kg			*26 310	*26 310	*19 940	16 180	*15 270	10 540					*12 160	8 290	7.2 m
	-10 ft lb			*57,220	*57,220	*43,210	34,820	*32,970	22,750					*26,830	18,410	23.5 ft
	-4.5 m kg			*20 930	*20 930	*16 070	*16 070							*12 110	11 490	5.8 m
-15 ft lb			*45,000	*45,000	*34,370	*34,370							*26,620	25,920	18.8 ft	
Boom : 6.45m (21'2") Arm : 3.2m (10'6") Shoe : 800mm (32") CWT : 6 700kg (14,770lb)	7.5 m kg									*9 370	8 820			*8 200	*8 200	7.7 m
	25 ft lb									*20,657	19,444			*18,150	*18,150	24.9 ft
	6 m kg									*9 500	8 750			*7 980	7 040	8.5 m
	20 ft lb									*20,840	18,820			*17,600	15,680	27.8 ft
	4.5 m kg					*14 350	*14 350	*11 610	*11 610	*10 260	8 500	*8 790	6 350	*8 060	6 270	9.1 m
	15 ft lb					*30,820	*30,820	*25,170	*25,170	*22,370	18,330	*19,378	13,999	*17,750	13,890	29.7 ft
	3 m kg					*18 440	17 330	*13 580	11 350	*11 290	8 190	9 600	6 220	*8 390	5 870	9.3 m
	10 ft lb					*39,640	37,400	*29,380	24,500	*24,530	17,670	20,660	13,400	*18,470	12,970	30.6 ft
	1.5 m kg					*21 460	16 330	*15 330	10 820	*12 280	7 900	9 450	6 080	8 910	5 740	9.4 m
	5 ft lb					*46,320	35,190	*33,180	23,350	*26,660	17,050	20,340	13,110	19,650	12,670	30.7 ft
	0 m kg					*22 610	15 900	*16 410	10 480	12 190	7 690	9 340	5 980	9 150	5 870	9.1 m
	0 ft lb					*48,990	34,230	*35,560	22,610	26,260	16,600			20,190	12,950	29.9 ft
	-1.5 m kg			*15 110	*15 110	*22 370	15 830	*16 640	10 350	12 090	7 610			9 890	6 310	8.6 m
	-5 ft lb			*34,210	*34,210	*48,540	34,050	*36,080	22,310	26,050	16,420			21,850	13,940	28.3 ft
	-3 m kg	*17 590	*17 590	*23 840	*23 840	*20 970	15 970	*15 880	10 400	12 170	7 670			11 470	7 270	7.8 m
	-10 ft lb	*39,430	*39,430	*54,050	*54,050	*45,430	34,370	*34,340	22,430	26,240	16,590			*25,430	16,140	25.6 ft
	-4.5 m kg			*24 300	*24 300	*17 980	16 340	*13 490	10 670					*11 830	9 440	6.6 m
-15 ft lb			*52,380	*52,380	*38,670	35,200	*28,730	23,070					*26,100	21,180	21.3 ft	
Boom : 6.45m (21'2") Arm : 3.9m (12'10") Shoe : 800mm (32") CWT : 6 700kg (14,770lb)	9 m kg													*6 920	*6 920	7.2 m
	30 ft lb													*15,410	*15,410	23.3 ft
	7.5 m kg									*8 160	*8 160			*6 470	*6 470	8.4 m
	25 ft lb									*18,070	*18,070			*14,300	*14,300	27.4 ft
	6 m kg									*8 510	*8 510	*7 680	6 550	*6 310	6 260	9.2 m
	20 ft lb									*18,670	*18,670	*14,610	14,040	*13,930	13,910	30.2 ft
	4.5 m kg							*10 380	*10 380	*9 380	8 630	*8 850	6 440	*6 370	5 630	9.7 m
	15 ft lb							*22,510	*22,510	*20,450	18,590	*19,410	13,850	*14,030	12,480	31.9 ft
	3 m kg					*16 410	*16 410	*12 460	11 550	*10 510	8 280	*9 430	6 260	*6 600	5 300	10.0 m
	10 ft lb					*35,300	*35,300	*26,960	24,920	*22,850	17,850	*20,600	13,480	*14,530	11,710	32.7 ft
	1.5 m kg					*20 040	16 620	*14 440	10 930	*11 650	7 940	9 450	6 080	*7 040	5 180	10.0 m
	5 ft lb					*43,230	35,810	*31,270	23,590	*25,310	17,130	20,350	13,100	*15,500	11,430	32.8 ft
	0 m kg			*9 320	*9 320	*22 030	15 940	*15 870	10 500	12 180	7 680	9 290	5 930	*7 760	5 270	9.8 m
	0 ft lb			*21,210	*21,210	*47,680	34,310	*34,390	22,630	26,230	16,550	20,020	12,790	*17,100	11,610	32.1 ft
	-1.5 m kg	*9 510	*9 510	*14 220	*14 220	*22 500	15 700	*16 510	10 270	12 010	7 520	9 220	5 860	8 770	5 590	9.3 m
	-5 ft lb	*21,230	*21,230	*32,130	*32,130	*48,790	33,770	*35,800	22,140	25,870	16,230	19,880	12,660	19,370	12,350	30.6 ft
	-3 m kg	*14 830	*14 830	*20 550	*20 550	*21 740	15 730	*16 250	10 230	11 990	7 510			9 900	6 290	8.6 m
-10 ft lb	*33,200	*33,200	*46,500	*46,500	*47,110	33,840	*35,180	22,070	25,840	16,210			21,950	13,940	28.1 ft	
-4.5 m kg	*21 190	*21 190	*27 500	*27 500	*19 600	15 990	*14 770	10 390					*11 110	7 740	7.5 m	
-15 ft lb	*47,670	*47,670	*59,360	*59,360	*42,270	34,430	*31,750	22,440					*24,540	17,290	24.3 ft	
-6 m kg			*20 790	*20 790	*15 130	*15 130							*11 300	*11 300	5.8 m	
-20 ft lb			*44,070	*44,070	*31,910	*31,910							*24,880	*24,880	18.4 ft	
Boom : 6.2m (20'4") Arm : 2.6m (8'6") Shoe : 800mm (32") CWT : 7 250kg (15,980lb)	7.5 m kg							*10 700	*10 700					*10 870	10 670	6.7 m
	25 ft lb							*23,660	*23,660					*24,030	*24,030	21.6 ft
	6 m kg							*11 220	*11 220	*10 740	8 830			*10 760	8 480	7.7 m
	20 ft lb							*24,490	*24,490	*23,730	18,950			*23,740	18,920	25.0 ft
	4.5 m kg					*15 850	*15 850	*12 670	12 170	*11 200	8 660			*10 870	7 410	8.3 m
	15 ft lb					*34,060	*34,060	*27,470	26,250	*24,460	18,660			*23,960	16,430	27.1 ft
	3 m kg					*19 770	17 640	*14 470	11 610	*12 030	8 410			10 600	6 890	8.6 m
	10 ft lb					*42,490	38,070	*31,310	25,060	*26,180	18,130			23,410	15,230	28.1 ft
	1.5 m kg					*22 280	16 810	*15 980	11 150	12 760	8 170			10 430	6 750	8.6 m
	5 ft lb					*48,130	36,240	*34,620	24,060	27,490	17,620			23,000	14,880	28.2 ft
	0 m kg					*22 820	16 540	*16 750	10 890	12 590	8 010			10 810	6 960	8.3 m
	0 ft lb					*49,480	35,600	*36,320	23,490	27,130	17,300			23,840	15,340	27.3 ft
	-1.5 m kg			*17 770	*17 770	*22 010	16 560	*16 560	10 830	12 580	8 000			11 930	7 630	7.8 m
	-5 ft lb			*40,440	*40,440	*47,770	35,630	*35,890	23,350	27,120	17,290			26,350	16,850	25.5 ft
	-3 m kg			*26 490	*26 490	*19 850	16 800	*15 050	10 970					*12 530	9 150	6.9 m
	-10 ft lb			*57,540	*57,540	*42,980	36,150	*32,410	23,690					*27,640	20,340	22.4 ft
	-4.5 m kg					*15 320	*15 320							*12 280	*12 280	5.4 m
-15 ft lb					*32,540	*32,540							*26,950	*26,950	17.5 ft	

Notes: 1. Machine in "Fine Mode-F" (Power Boost) for lifting capacities. 2. The above loads are in compliance with SAE J1097 and ISO 10567 Hydraulic Excavator Lifting Capacity Standards. 3. Rated loads do not exceed 87% of hydraulic lifting capacity or 75% of tipping load. 4. Rated loads marked with an asterisk (\*) are limited by hydraulic capacity rather than tipping load.



# SPECIFICATIONS.

## LIFTING CAPACITY EC380ELC

Lifting capacity at the arm end without bucket.

For lifting capacity including bucket, simply subtract actual weight of the direct fit bucket or the bucket with quick coupler from the following values.

	Lifting hook related to ground level	1.5 m (5 ft)		3.0 m (10 ft)		4.5 m (15 ft)		6.0 m (20 ft)		7.5 m (25 ft)		9.0 m (30 ft)		Max. reach		
		Along UC	Across UC	Along UC	Across UC	Along UC	Across UC	Along UC	Across UC	Along UC	Across UC	Along UC	Across UC	Along UC	Across UC	Max.
Boom : 6.45m (21'2") Arm : 2.6m (8'6") Shoe : 800mm (32") CWT : 7 250kg (15,980lb)	7.5 m kg							*10 283	*10 283					*10 420	9 950	7.0 m
	25 ft lb							*22,670	*22,670					*23,030	22,430	22.7 ft
	6 m kg							*11 020	*11 020	*10 360	8 870			*10 360	8 040	8.0 m
	20 ft lb							*24,000	*24,000	*22,790	19,070			*22,840	17,920	25.9 ft
	4.5 m kg					*16 080	*16 080	*12 580	*12 120	*10 970	8 660			*10 480	7 080	8.5 m
	15 ft lb					*34,490	*34,490	*27,240	26,150	*23,930	18,670			*23,100	15,680	27.9 ft
	3 m kg							*14 430	*11 540	*11 870	8 390			*10 150	6 600	8.8 m
	10 ft lb							*31,200	24,910	*25,810	18,090			*22,400	14,580	28.9 ft
	1.5 m kg							*15 940	11 080	*12 710	8 140			9 990	6 470	8.8 m
	5 ft lb							*34,500	23,910	27,410	17,560			22,020	14,260	29.0 ft
	0 m kg							*21 850	16 440	*16 690	10 820	12 550	7 980	*10 320	6 650	8.6 m
	0 ft lb							*49,270	35,370	*36,180	23,350	27,030	17,220	22,750	14,670	28.2 ft
	-1.5 m kg			*14 880	*14 880	*21 890	16 480	*16 550	10 760	12 510	7 950			*11 300	7 240	8.1 m
	-5 ft lb			*33,980	*33,980	*47,540	35,450	*35,870	23,220	26,980	17,170			24,970	16,000	26.4 ft
	-3 m kg			*26 310	*26 310	*19 940	16 710	*15 270	10 890					*12 160	8 560	7.2 m
-10 ft lb			*57,220	*57,220	*43,210	35,950	*32,970	23,510					*26,830	19,020	23.5 ft	
-4.5 m kg			*20 930	*20 930	*16 070	*16 070							*12 110	11 860	5.8 m	
-15 ft lb			*45,000	*45,000	*34,370	*34,370							*26,620	*26,620	18.8 ft	
Boom : 6.45m (21'2") Arm : 3.2m (10'6") Shoe : 800mm (32") CWT : 7 250kg (15,980lb)	7.5 m kg									*9 370	9 080			*8 200	*8 200	7.7 m
	25 ft lb									*20,657	20 018			*18,150	*18,150	24.9 ft
	6 m kg									*9 500	9 010			*7 980	7 270	8.5 m
	20 ft lb									*20,840	19,390			*17,600	16,180	27.8 ft
	4.5 m kg					*14 350	*14 350	*11 610	*11 610	*10 260	8 770	*8 790	6 560	*8 060	6 480	9.1 m
	15 ft lb					*30,820	*30,820	*25,170	*25,170	*22,370	18,900	*19,378	14,462	*17,750	14,350	29.7 ft
	3 m kg					*18 440	*17 850	*13 580	*11 700	*11 290	8 460	9 870	6 430	*8 390	6 070	9.3 m
	10 ft lb					*39,640	38,530	*29,380	25,260	*24,530	18,240	21,240	13,850	*18,470	13,410	30.6 ft
	1.5 m kg					*21 460	16 850	*15 330	*11 170	*12 280	8 170	9 710	6 290	*9 030	5 950	9.4 m
	5 ft lb					*46,320	36,320	*33,180	24,100	*26,660	17,620	20,930	13,560	*19,860	13,110	30.7 ft
	0 m kg					*22 610	16 430	*16 410	10 830	12 540	7 960	9 610	6 190	9 420	6 080	9.1 m
	0 ft lb					*48,990	35,360	*35,560	23,360	27,000	17,170			20,770	13,400	29.9 ft
	-1.5 m kg			*15 110	*15 110	*22 370	16 350	*16 640	10 700	12 440	7 870			*10 170	6 530	8.6 m
	-5 ft lb			*34,210	*34,210	*48,540	35,180	*36,080	23,070	26,790	16,990			22,470	14,430	28.3 ft
	-3 m kg	*17 590	*17 590	*23 840	*23 840	*20 970	16 500	*15 880	10 750	*12 270	7 930			*11 520	7 520	7.8 m
-10 ft lb	*39,430	*39,430	*54,050	*54,050	*45,430	35,500	*34,340	23,190	*26,330	17,160			*25,430	16,690	25.6 ft	
-4.5 m kg			*24 300	*24 300	*17 980	16 870	*13 490	11 020					*11 830	9 750	6.6 m	
-15 ft lb			*52,380	*52,380	*38,670	36,330	*28,730	23,830					*26,100	21,880	21.3 ft	
Boom : 6.45m (21'2") Arm : 3.9m (12'10") Shoe : 800mm (32") CWT : 7 250kg (15,980lb)	9 m kg													*6 920	*6 920	7.2 m
	30 ft lb													*15,410	*15,410	23.3 ft
	7.5 m kg									*8 160	*8 160			*6 470	*6 470	8.4 m
	25 ft lb									*18,070	*18,070			*14,300	*14,300	27.4 ft
	6 m kg									*8 510	*8 510	*7 680	6 760	*6 310	*6 310	9.2 m
	20 ft lb									*18,670	*18,670	*14,610	14,500	*13,930	*13,930	30.2 ft
	4.5 m kg							*10 380	*10 380	*9 380	8 890	*8 850	6 650	*6 370	5 830	9.7 m
	15 ft lb							*22,510	*22,510	*20,450	19,160	*19,410	14,300	*14,030	12,900	31.9 ft
	3 m kg					*16 410	*16 410	*12 460	*11 900	*10 510	8 540	*9 430	6 470	*6 600	5 490	10.0 m
	10 ft lb					*35,300	*35,300	*26,960	25,680	*22,850	18,420	*20,600	13,940	*14,530	12,120	32.7 ft
	1.5 m kg					*20 040	17 140	*14 440	*11 290	*11 650	8 200	9 720	6 290	*7 040	5 370	10.0 m
	5 ft lb					*43,230	36,940	*31,270	24,350	*25,310	17,700	20,940	13,550	*15,500	11,840	32.8 ft
	0 m kg			*9 320	*9 320	*22 030	16 460	*15 870	10 850	12 530	7 940	9 560	6 140	*7 760	5 460	9.8 m
	0 ft lb			*21,210	*21,210	*47,680	35,440	*34,390	23,390	26,970	17,120	20,600	13,250	*17,100	12,040	32.1 ft
	-1.5 m kg	*9 510	*9 510	*14 220	*14 220	*22 500	16 220	*16 510	10 620	12 360	7 790	9 490	6 070	*8 930	5 800	9.3 m
-5 ft lb	*21,230	*21,230	*32,130	*32,130	*48,790	34,900	*35,800	22,890	26,610	16,800	20,460	13,120	*19,720	12,800	30.6 ft	
-3 m kg	*14 830	*14 830	*20 550	*20 550	*21 740	16 250	*16 250	10 580	12 340	7 770			*10 190	6 510	8.6 m	
-10 ft lb	*33,200	*33,200	*46,500	*46,500	*47,110	34,970	*35,180	22,820	26,590	16,780			22,590	14,440	28.1 ft	
-4.5 m kg	*21 190	*21 190	*27 500	*27 500	*19 600	16 510	*14 770	10 740					*11 110	8 000	7.5 m	
-15 ft lb	*47,670	*47,670	*59,360	*59,360	*42,270	35,560	*31,750	23,190					*24,540	17,880	24.3 ft	
-6 m kg			*20 790	*20 790	*15 130	*15 130							*11 300	*11 300	5.8 m	
-20 ft lb			*44,070	*44,070	*31,910	*31,910							*24,880	*24,880	18.4 ft	
Boom : 6.2m (20'4") Arm : 2.6m (8'6") Shoe : 900mm (36") CWT : 6 700kg (14,770lb)	7.5 m kg							*10 700	*10 700					*10 870	10 460	6.7 m
	25 ft lb							*23,660	*23,660					*24,030	23,650	21.6 ft
	6 m kg							*11 220	*11 220	*10 740	8 640			*10 760	8 310	7.7 m
	20 ft lb							*24,490	*24,490	*23,730	18,550			*23,740	18,530	25.0 ft
	4.5 m kg					*15 850	*15 850	*12 670	*11 930	*11 200	8 480			*10 870	7 250	8.3 m
	15 ft lb					*34,060	*34,060	*27,470	25,730	*24,460	18,270			*23,960	16,070	27.1 ft
	3 m kg					*19 770	17 270	*14 470	*11 370	*12 030	8 220			*10 420	6 740	8.6 m
	10 ft lb					*42,490	37,290	*31,310	24,540	*26,180	17,730			23,020	14,880	28.1 ft
	1.5 m kg					*22 280	16 450	*15 980	10 910	12 550	7 980			*10 250	6 590	8.6 m
	5 ft lb					*48,130	35,450	*34,620	23,540	27,020	17,230			22,610	14,540	28.2 ft
	0 m kg					*22 820	16 180	*16 750	10 650	12 380	7 830			*10 620	6 800	8.3 m
	0 ft lb					*49,480	34,820	*36,320	22,960	26,660	16,900			23,430	14,990	27.3 ft
	-1.5 m kg			*17 770	*17 770	*22 010	16 200	*16 560	10 580	12 360	7 820			*11 720	7 450	7.8 m
	-5 ft lb			*40,440	*40,440	*47,770	34,850	*35,890	22,830	26,660	16,900			25,900	16,470	25.5 ft
	-3 m kg			*26 490	*26 490	*19 850	16 430	*15 050	10 730					*12 530	8 950	6.9 m
-10 ft lb			*57,540	*57,540	*42,980	35,370	*32,410	23,170					*27,640	19,890	22.4 ft	
-4.5 m kg					*15 320	*15 320							*12 280	*12 280	5.4 m	
-15 ft lb					*32,540	*32,540							*26,950	*26,950	17.5 ft	

Notes: 1. Machine in "Fine Mode-F" (Power Boost) for lifting capacities. 2. The above loads are in compliance with SAE J1097 and ISO 10567 Hydraulic Excavator Lifting Capacity Standards. 3. Rated loads do not exceed 87% of hydraulic lifting capacity or 75% of tipping load. 4. Rated loads marked with an asterisk (\*) are limited by hydraulic capacity rather than tipping load.

## LIFTING CAPACITY EC380ELC

Lifting capacity at the arm end without bucket.

For lifting capacity including bucket, simply subtract actual weight of the direct fit bucket or the bucket with quick coupler from the following values.

	Lifting hook related to ground level	1.5 m (5 ft)		3.0 m (10 ft)		4.5 m (15 ft)		6.0 m (20 ft)		7.5 m (25 ft)		9.0 m (30 ft)		Max. reach		
		Along UC	Across UC	Along UC	Across UC	Along UC	Across UC	Along UC	Across UC	Along UC	Across UC	Along UC	Across UC	Along UC	Across UC	Max.
Boom : 6.45m (21'2") Arm : 2.6m (8'6") Shoe : 900mm (36") CWT : 6 700kg (14,770lb)	7.5 m kg							*10 283	*10 283					*10 420	9 750	7.0 m
	25 ft lb							*22,670	*22,670					*23,030	21,980	22.7 ft
	6 m kg							*11 020	*11 020	*10 360	8 690			*10 360	7 870	8.0 m
	20 ft lb							*24,000	*24,000	*22,790	18,670			*22,840	17,540	25.9 ft
	4.5 m kg					*16 080	*16 080	*12 580	*11 870	*10 970	8 480			*10 480	6 920	8.5 m
	15 ft lb					*34,490	*34,490	*27,240	25,630	*23,930	18,280			*23,100	15,340	27.9 ft
	3 m kg							*14 430	11 300	*11 870	8 200			9 970	6 450	8.8 m
	10 ft lb							*31,200	24,390	*25,810	17,700			22,020	14,250	28.9 ft
	1.5 m kg							*15 940	10 830	12 510	7 950			9 820	6 320	8.8 m
	5 ft lb							*34,500	23,380	26,950	17,160			21,640	13,930	29.0 ft
	0 m kg					*21 850	16 070	*16 690	10 580	12 330	7 790			10 140	6 500	8.6 m
	0 ft lb					*49,270	34,590	*36,180	22,820	26,570	16,820			22,360	14,320	28.2 ft
	-1.5 m kg			*14 880	*14 880	*21 890	16 120	*16 550	10 520	12 300	7 760			*11 110	7 080	8.1 m
	-5 ft lb			*33,980	*33,980	*47,540	34,670	*35,870	22,690	26,510	16,770			24,540	15,630	26.4 ft
	-3 m kg			*26 310	*26 310	*19 940	16 340	*15 270	10 650					*12 160	8 370	7.2 m
-10 ft lb			*57,220	*57,220	*43,210	35,170	*32,970	22,990					*26,830	18,600	23.5 ft	
-4.5 m kg			*20 930	*20 930	*16 070	*16 070							*12 110	11 600	5.8 m	
-15 ft lb			*45,000	*45,000	*34,370	*34,370							*26,620	26,180	18.8 ft	
Boom : 6.45m (21'2") Arm : 3.2m (10'6") Shoe : 900mm (36") CWT : 6 700kg (14,770lb)	7.5 m kg									*9 370	8 900			*8 200	*8 200	7.7 m
	25 ft lb									*20,657	19,621			*18,150	*18,150	24.9 ft
	6 m kg									*9 500	8 830			*7 980	7 110	8.5 m
	20 ft lb									*20,840	19,000			*17,600	15,840	27.8 ft
	4.5 m kg					*14 350	*14 350	*11 610	*11 610	*10 260	8 590	*8 790	6 420	*8 060	6 330	9.1 m
	15 ft lb					*30,820	*30,820	*25,170	*25,170	*22,370	18,500	*19,378	14,153	*17,750	14,030	29.7 ft
	3 m kg					*18 440	17 490	*13 580	11 460	*11 290	8 280	9 700	6 290	*8 390	5 930	9.3 m
	10 ft lb					*39,640	37,740	*29,380	24,740	*24,530	17,850	20,880	13,540	*18,470	13,110	30.6 ft
	1.5 m kg					*21 460	16 490	*15 330	10 930	*12 280	7 980	9 550	6 150	9 010	5 810	9.4 m
	5 ft lb					*46,320	35,540	*33,180	23,580	*26,660	17,230	20,560	13,250	*19,860	12,800	30.7 ft
	0 m kg					*22 610	16 060	*16 410	10 590	12 320	7 780	9 440	6 050	9 250	5 930	9.1 m
	0 ft lb					*48,990	34,580	*35,560	22,840	26,540	16,780			20,410	13,090	29.9 ft
	-1.5 m kg			*15 110	*15 110	*22 370	15 990	*16 640	10 450	12 220	7 690			10 000	6 380	8.6 m
	-5 ft lb			*34,210	*34,210	*48,540	34,400	*36,080	22,540	26,330	16,590			22,080	14,100	28.3 ft
	-3 m kg	*17 590	*17 590	*23 840	*23 840	*20 970	16 130	*15 880	10 500	*12 270	7 750			*11 520	7 350	7.8 m
-10 ft lb	*39,430	*39,430	*54,050	*54,050	*45,430	34,720	*34,340	22,660	*26,330	16,770			*25,430	16,310	25.6 ft	
-4.5 m kg			*24 300	*24 300	*17 980	16 510	*13 490	10 780					*11 830	9 540	6.6 m	
-15 ft lb			*52,380	*52,380	*38,670	35,550	*28,730	23,300					*26,100	21,400	21.3 ft	
Boom : 6.45m (21'2") Arm : 3.9m (12'10") Shoe : 900mm (36") CWT : 6 700kg (14,770lb)	9 m kg													*6 920	*6 920	7.2 m
	30 ft lb													*15,410	*15,410	23.3 ft
	7.5 m kg									*8 160	*8 160			*6 470	*6 470	8.4 m
	25 ft lb									*18,070	*18,070			*14,300	*14,300	27.4 ft
	6 m kg									*8 510	*8 510	*7 680	6 610	*6 310	*6 310	9.2 m
	20 ft lb									*18,670	*18,670	*14,610	14,180	*13,930	*13,930	30.2 ft
	4.5 m kg							*10 380	*10 380	*9 380	8 710	*8 850	6 500	*6 370	5 690	9.7 m
	15 ft lb							*22,510	*22,510	*20,450	18,760	*19,410	13,990	*14,030	12,610	31.9 ft
	3 m kg					*16 410	*16 410	*12 460	11 660	*10 510	8 360	*9 430	6 330	*6 600	5 360	10.0 m
	10 ft lb					*35,300	*35,300	*26,960	25,160	*22,850	18,030	*20,600	13,620	*14,530	11,830	32.7 ft
	1.5 m kg					*20 040	16 780	*14 440	11 040	*11 650	8 020	9 550	6 140	*7 040	5 240	10.0 m
	5 ft lb					*43,230	36,160	*31,270	23,820	*25,310	17,300	20,570	13,240	*15,500	11,560	32.8 ft
	0 m kg			*9 320	*9 320	*22 030	16 100	*15 870	10 600	12 310	7 760	9 390	6 000	*7 760	5 320	9.8 m
	0 ft lb			*21,210	*21,210	*47,680	34,660	*34,390	22,870	26,510	16,730	20,240	12,930	*17,100	11,740	32.1 ft
	-1.5 m kg	*9 510	*9 510	*14 220	*14 220	*22 500	15 860	*16 510	10 380	12 140	7 600	9 320	5 930	8 870	5 660	9.3 m
-5 ft lb	*21,230	*21,230	*32,130	*32,130	*48,790	34,110	*35,800	22,370	26,150	16,400	20,100	12,800	19,580	12,490	30.6 ft	
-3 m kg	*14 830	*14 830	*20 550	*20 550	*21 740	15 890	*16 250	10 340	12 120	7 590			10 010	6 360	8.6 m	
-10 ft lb	*33,200	*33,200	*46,500	*46,500	*47,110	34,190	*35,180	22,300	26,120	16,380			22,190	14,090	28.1 ft	
-4.5 m kg	*21 190	*21 190	*27 500	*27 500	*19 600	16 150	*14 770	10 500					*11 110	7 820	7.5 m	
-15 ft lb	*47,670	*47,670	*59,360	*59,360	*42,270	34,770	*31,750	22,670					*24,540	17,470	24.3 ft	
-6 m kg			*20 790	*20 790	*15 130	*15 130							*11 300	*11 300	5.8 m	
-20 ft lb			*44,070	*44,070	*31,910	*31,910							*24,880	*24,880	18.4 ft	
Boom : 6.2m (20'4") Arm : 2.6m (8'6") Shoe : 900mm (36") CWT : 7 250kg (15,980lb)	7.5 m kg							*10 700	*10 700					*10 870	10 770	6.7 m
	25 ft lb							*23,660	*23,660					*24,030	*24,030	21.6 ft
	6 m kg							*11 220	*11 220	*10 740	8 910			*10 760	8 560	7.7 m
	20 ft lb							*24,490	*24,490	*23,730	19,120			*23,740	19,100	25.0 ft
	4.5 m kg					*15 850	*15 850	*12 670	12 280	*11 200	8 740			*10 870	7 480	8.3 m
	15 ft lb					*34,060	*34,060	*27,470	26,480	*24,460	18,840			*23,960	16,590	27.1 ft
	3 m kg					*19 770	17 800	*14 470	11 720	*12 030	8 490			10 710	6 960	8.6 m
	10 ft lb					*42,490	38,420	*31,310	25,300	*26,180	18,300			23,650	15,380	28.1 ft
	1.5 m kg					*22 280	16 970	*15 980	11 260	*12 830	8 250			10 540	6 820	8.6 m
	5 ft lb					*48,130	36,580	*34,620	24,300	27,770	17,790			23,240	15,030	28.2 ft
	0 m kg					*22 820	16 700	*16 750	11 000	12 720	8 100			10 920	7 030	8.3 m
	0 ft lb					*49,480	35,950	*36,320	23,720	27,410	17,470			24,080	15,500	27.3 ft
	-1.5 m kg			*17 770	*17 770	*22 010	16 720	*16 560	10 940	12 710	8 080			12 050	7 700	7.8 m
	-5 ft lb			*40,440	*40,440	*47,770	35,980	*35,890	23,590	27,400	17,470			26,630	17,020	25.5 ft
	-3 m kg			*26 490	*26 490	*19 850	16 960	*15 050	11 080					*12 530	9 240	6.9 m
-10 ft lb			*57,540	*57,540	*42,980	36,500	*32,410	23,920					*27,640	20,540	22.4 ft	
-4.5 m kg					*15 320	*15 320							*12 280	*12 280	5.4 m	
-15 ft lb					*32,540	*32,540							*26,950	*26,950	17.5 ft	

Notes: 1. Machine in "Fine Mode-F" (Power Boost) for lifting capacities. 2. The above loads are in compliance with SAE J1 097 and ISO 1 0567 Hydraulic Excavator Lifting Capacity Standards. 3. Rated loads do not exceed 87% of hydraulic lifting capacity or 75% of tipping load. 4. Rated loads marked with an asterisk (\*) are limited by hydraulic capacity rather than tipping load.



# SPECIFICATIONS.

## LIFTING CAPACITY EC380ELC

Lifting capacity at the arm end without bucket.

For lifting capacity including bucket, simply subtract actual weight of the direct fit bucket or the bucket with quick coupler from the following values.

	Lifting hook related to ground level	1.5 m (5 ft)		3.0 m (10 ft)		4.5 m (15 ft)		6.0 m (20 ft)		7.5 m (25 ft)		9.0 m (30 ft)		Max. reach				
		Along UC	Across UC	Along UC	Across UC	Along UC	Across UC	Along UC	Across UC	Along UC	Across UC	Along UC	Across UC	Along UC	Across UC	Max.		
Boom : 6.45m (21'2") Arm : 2.6m (8'6") Shoe : 900mm (36") CWT : 7 250kg (15,980lb)	7.5 m kg							*10 283	*10 283					*10 420	10 030	7.0 m		
	25 ft lb							*22,670	*22,670					*23,030	22,630	22.7 ft		
	6 m kg							*11 020	*11 020	*10 360	8 950			*10 360	8 120	8.0 m		
	20 ft lb							*24,000	*24,000	*22,790	19,240			*22,840	18,080	25.9 ft		
	4.5 m kg					*16 080	*16 080	*12 580	12 220	*10 970	8 740			*10 480	7 150	8.5 m		
	15 ft lb					*34,490	*34,490	*27,240	26,380	*23,930	18,850			*23,100	15,840	27.9 ft		
	3 m kg							*14 430	11 650	*11 870	8 470			10 250	6 670	8.8 m		
	10 ft lb							*31,200	25,150	*25,810	18,270			22,630	14,730	28.9 ft		
	1.5 m kg							*15 940	11 190	*12 710	8 220			10 090	6 530	8.8 m		
	5 ft lb							*34,500	24,140	*27,600	17,730			22,250	14,410	29.0 ft		
	0 m kg					*21 850	16 600	*16 690	10 930	12 680	8 060			10 430	6 720	8.6 m		
	0 ft lb					*49,270	35,720	*49,270	35,720	*36,180	23,580	27,310	17,390	22,990	14,820	28.2 ft		
	-1.5 m kg			*14 880	*14 880	*21 890	16 640	*16 550	10 870	12 640	8 030			11 420	7 320	8.1 m		
	-5 ft lb			*33,980	*33,980	*47,540	35,800	*35,870	23,450	*27,260	17,340			25,230	16,170	26.4 ft		
	-3 m kg			*26 310	*26 310	*19 940	16 870	*15 270	11 000					*12 160	8 650	7.2 m		
	-10 ft lb			*57,220	*57,220	*43,210	36,300	*32,970	23,740					*26,830	19,210	23.5 ft		
-4.5 m kg			*20 930	*20 930	*16 070	*16 070							*12 110	11 970	5.8 m			
-15 ft lb			*45,000	*45,000	*34,370	*34,370							*26,620	*26,620	18.8 ft			
Boom : 6.45m (21'2") Arm : 3.2m (10'6") Shoe : 900mm (36") CWT : 7 250kg (15,980lb)	7.5 m kg									*9 370	9 160			*8 200	*8 200	7.7 m		
	25 ft lb									*20,657	20,194			*18,150	*18,150	24.9 ft		
	6 m kg									*9 500	9 090			*7 980	7 340	8.5 m		
	20 ft lb									*20,840	19,570			*17,600	16,330	27.8 ft		
	4.5 m kg					*14 350	*14 350	*11 610	*11 610	*10 260	8 850	*8 790	6 630	*8 060	6 540	9.1 m		
	15 ft lb					*30,820	*30,820	*25,170	*25,170	*22,370	19,070	*19,378	14,616	*17,750	14,490	29.7 ft		
	3 m kg					*18 440	18 010	*13 580	11 810	*11 290	8 540	9 970	6 500	*8 390	6 140	9.3 m		
	10 ft lb					*39,640	38,870	*29,380	25,490	*24,530	18,420	21,460	13,990	*18,470	13,550	30.6 ft		
	1.5 m kg					*21 460	17 010	*15 330	11 280	*12 280	8 250	9 820	6 360	*9 030	6 010	9.4 m		
	5 ft lb					*46,320	36,670	*33,180	24,340	*26,660	17,800	21,150	13,700	*19,860	13,250	30.7 ft		
	0 m kg					*22 610	16 590	*16 410	10 940	12 670	8 040	9 710	6 260	*9 520	6 140	9.1 m		
	0 ft lb					*48,990	35,710	*35,560	23,600	27,280	17,350			20,990	13,540	29.9 ft		
	-1.5 m kg			*15 110	*15 110	*22 370	16 510	*16 640	10 810	12 570	7 950			10 280	6 600	8.6 m		
	-5 ft lb			*34,210	*34,210	*48,540	35,530	*36,080	23,300	27,070	17,160			22,710	14,580	28.3 ft		
	-3 m kg	*17 590	*17 590	*23 840	*23 840	*20 970	16 660	*15 880	10 860	*12 270	8 020			*11 520	7 600	7.8 m		
	-10 ft lb	*39,430	*39,430	*54,050	*54,050	*45,430	35,840	*34,340	23,420	*26,330	17,340			*25,430	16,870	25.6 ft		
-4.5 m kg			*24 300	*24 300	*17 980	17 030	*13 490	11 130					*11 830	9 850	6.6 m			
-15 ft lb			*52,380	*52,380	*38,670	36,680	*28,730	24,060					*26,100	22,090	21.3 ft			
Boom : 6.45m(21'2") Arm : 3.9m(12'10") Shoe : 900mm(36") CWT : 7 250kg(15,980lb)	9 m kg													*6 920	*6 920	7.2 m		
	30 ft lb													*15,410	*15,410	23.3 ft		
	7.5 m kg									*8 160	*8 160			*6 470	*6 470	8.4 m		
	25 ft lb									*18,070	*18,070			*14,300	*14,300	27.4 ft		
	6 m kg									*8 510	*8 510	*7 680	6 830	*6 310	*6 310	9.2 m		
	20 ft lb									*18,670	*18,670	*14,610	*14,610	*13,930	*13,930	30.2 ft		
	4.5 m kg									*10 380	*10 380	*9 380	8 970	*8 850	6 710	*6 370	5 890	9.7 m
	15 ft lb									*22,510	*22,510	*20,450	19,330	*19,410	14,440	*14,030	13,030	31.9 ft
	3 m kg					*16 410	*16 410	*12 460	12 010	*10 510	8 630	*9 430	6 540	*6 600	5 540	10.0 m		
	10 ft lb					*35,300	*35,300	*26,960	25,910	*22,850	18,600	*20,600	14,080	*14,530	12,240	32.7 ft		
	1.5 m kg					*20 040	17 300	*14 440	11 390	*11 650	8 290	9 820	6 350	*7 040	5 430	10.0 m		
	5 ft lb					*43,230	37,290	*31,270	24,580	*25,310	17,870	21,160	13,690	*15,500	11,970	32.8 ft		
	0 m kg			*9 320	*9 320	*22 030	16 630	*15 870	10 950	*12 550	8 020	9 660	6 210	*7 760	5 520	9.8 m		
	0 ft lb			*21,210	*21,210	*47,680	35,790	*34,390	23,620	*27,240	17,300	20,820	13,390	*17,100	12,170	32.1 ft		
	-1.5 m kg	*9 510	*9 510	*14 220	*14 220	*22 500	16 380	*16 510	10 730	12 490	7 870	9 590	6 140	*8 930	5 860	9.3 m		
	-5 ft lb	*21,230	*21,230	*32,130	*32,130	*48,790	35,240	*35,800	23,130	26,890	16,970	20,680	13,260	*19,720	12,940	30.6 ft		
-3 m kg	*14 830	*14 830	*20 550	*20 550	*21 740	16 410	*16 250	10 690	12 470	7 850			10 300	6 580	8.6 m			
-10 ft lb	*33,200	*33,200	*46,500	*46,500	*47,110	35,310	*35,180	23,060	26,870	16,950			22,830	14,590	28.1 ft			
-4.5 m kg	*21 190	*21 190	*27 500	*27 500	*19 600	16 680	*14 770	10 850					*11 110	8 080	7.5 m			
-15 ft lb	*47,670	*47,670	*59,360	*59,360	*42,270	35,900	*31,750	23,420					*24,540	18,060	24.3 ft			
-6 m kg			*20 790	*20 790	*15 130	*15 130							*11 300	*11 300	5.8 m			
-20 ft lb			*44,070	*44,070	*31,910	*31,910							*24,880	*24,880	18.4 ft			

Notes: 1. Machine in "Fine Mode-F" (Power Boost) for lifting capacities. 2. The above loads are in compliance with SAE J1097 and ISO 10567 Hydraulic Excavator Lifting Capacity Standards. 3. Rated loads do not exceed 87% of hydraulic lifting capacity or 75% of tipping load. 4. Rated loads marked with an asterisk (\*) are limited by hydraulic capacity rather than tipping load.

**LIFTING CAPACITY EC380ELR**

Lifting capacity at the arm end without bucket.

For lifting capacity including bucket, simply subtract actual weight of the direct fit bucket or the bucket with quick coupler from the following values.

	Lifting hook related to ground level	1.5 m (5 ft)		3.0 m (10 ft)		4.5 m (15 ft)		6.0 m (20 ft)		7.5 m (25 ft)		9.0 m (30 ft)		10.5 m (35 ft)		12.0 m (40 ft)		Max. reach					
		Along UC	Across UC	Along UC	Across UC	Along UC	Across UC	Along UC	Across UC	Along UC	Across UC	Along UC	Across UC	Along UC	Across UC	Along UC	Across UC	Along UC	Across UC	Max.			
Boom : 8.5m (27'11") Arm : 5.0m (16'5") Shoe : 800mm (32") CWT : 8 200kg (18,080lb)	10.5 m	kg																	*5 450	*5 450	10.1 m		
	35 ft	lb																	*12,110	*12,110	32.7 ft		
	9 m	kg												*5 390	*5 390				*5 180	*5 160	11.2 m		
	30 ft	lb												*12,000	*12,000				*11,470	*11,470	36.4 ft		
	7.5 m	kg												*5 460	*5 460				*5 060	*4 520	12.0 m		
	25 ft	lb												*12,040	*12,040				*11,160	*10,050	39.2 ft		
	6 m	kg												*6 000	*6 000	*5 770	5 670	*5 700	4 480	*5 030	4 090	12.6 m	
	20 ft	lb												*13,080	*13,080	*12,630	12,200	*12,590	9,590	*11,100	9,070	41.1 ft	
	4.5 m	kg									*7 540	*7 540	*6 720	*6 720	*6 210	5 480	*5 940	4 380	*5 090	3 810	12.9 m		
	15 ft	lb									*16,310	*16,310	*14,600	*14,600	*13,570	11,800	*13,030	9,400	*11,220	8,430	42.4 ft		
	3 m	kg							*11 130	*11 130	*8 820	8 650	*7 530	6 650	*6 740	5 270	*6 260	4 250	*5 240	3 640	13.1 m		
	10 ft	lb							*23,950	*23,950	*19,070	18,690	*16,340	14,350	*14,680	11,350	*13,680	9,140	*11,540	8,040	43.0 ft		
	1.5 m	kg							*13 040	10 990	*10 030	8 150	*8 330	6 330	*7 280	5 060	6 450	4 130	*5 480	3 560	13.1 m		
	5 ft	lb							*28,120	23,760	*21,700	17,600	*18,070	13,660	*15,830	10,910	13,880	8,880	*12,070	7,860	43.1 ft		
	0 m	kg							*14 360	10 460	*11 010	7 770	*9 020	6 070	*6 680	4 890	6 330	4 020	*5 650	3 570	13.0 m		
	0 ft	lb							*16,860	*16,860	*31,060	22,590	*23,840	16,770	*19,570	13,100	*16,560	10,540	13,650	8,660	12,470	7,890	42.6 ft
	-1.5 m	kg							*9 590	*9 590	*15 090	10 200	*11 670	7 530	9 380	5 890	*7 550	4 770	6 260	3 950	*5 830	3 680	12.6 m
	-5 ft	lb							*21,960	*21,960	*32,680	21,990	*25,290	16,250	20,230	12,710	*16,280	10,280	13,510	8,530	12,880	8,130	41.4 ft
	-3 m	kg	*6 830	*6 830	*8 480	*8 480	*12 870	*12 870	*15 300	10 120	*11 990	7 420	9 280	5 800	*7 490	4 710	6 260	3 950	*6 190	3 910	12.1 m		
	-10 ft	lb	*15,300	*15,300	*19,140	*19,140	*29,350	*29,350	*33,160	21,810	*25,980	16,010	20,020	12,510	*16,160	10,170	13,800	8,708	13,690	8,650	39.6 ft		
-4.5 m	kg	*10 000	*10 000	*12 140	*12 140	*17 180	15 760	*15 050	10 170	*11 930	7 420	9 280	5 800	*7 510	4 730			6 810	4 310	11.3 m			
-15 ft	lb	*22,460	*22,460	*27,420	*27,420	*39,210	33,910	*32,600	21,930	*25,830	16,030	20,030	12,520	*16,240	10,240			15,100	9,560	37.0 ft			
-6 m	kg	*13 610	*13 610	*16 570	*16 570	*18 570	16 080	*14 270	10 350	*11 400	7 540	*9 300	5 900					*7 690	5 000	10.3 m			
-20 ft	lb	*30,630	*30,630	*37,570	*37,570	*40,140	34,620	*30,850	22,330	*24,610	16,300	*19,990	12,780					*17,010	11,150	33.5 ft			
-7.5 m	kg			*22 510	*22 510	*16 410	*16 410	*12 770	10 670	*10 150	7 800							*8 010	6 280	8.9 m			
-25 ft	lb			*48,280	*48,280	*35,230	*35,230	*27,370	23,070	*21,650	16,910							*17,720	14,180	28.7 ft			
-9 m	kg					*12 770	*12 770	*9 830	9 830									*8 170	*8 170	6.9 m			
-30 ft	lb					*26,760	*26,760	*20,310	20,310									*17,990	*17,990	21.8 ft			
Boom : 8.5m (27'11") Arm : 5.0m (16'5") Shoe : 900mm (36") CWT : 8 200kg (18,080lb)	10.5 m	kg																	*5 450	*5 450	10.1 m		
	35 ft	lb																	*12,110	*12,110	32.7 ft		
	9 m	kg												*5 390	*5 390				*5 180	*5 180	11.2 m		
	30 ft	lb												*12,000	*12,000				*11,470	*11,470	36.4 ft		
	7.5 m	kg												*5 460	*5 460				*5 060	*4 560	12.0 m		
	25 ft	lb												*12,040	*12,040				*11,160	*10,160	39.2 ft		
	6 m	kg												*6 000	*6 000	*5 770	5 730	*5 700	4 520	*5 030	4 130	12.6 m	
	20 ft	lb												*13,080	*13,080	*12,630	12,320	*12,590	9,690	*11,100	9,170	41.1 ft	
	4.5 m	kg									*7 540	*7 540	*6 720	*6 720	*6 210	5 540	*5 940	4 420	*5 090	3 850	12.9 m		
	15 ft	lb									*16,310	*16,310	*14,600	*14,600	*13,570	11,920	*13,030	9,500	*11,220	8,520	42.4 ft		
	3 m	kg							*11 130	*11 130	*8 820	8 730	*7 530	6 710	*6 740	5 320	*6 260	4 300	*5 240	3 680	13.1 m		
	10 ft	lb							*23,950	*23,950	*19,070	18,860	*16,340	14,490	*14,680	11,470	*13,680	9,240	*11,540	8,130	43.0 ft		
	1.5 m	kg							*13 040	11 100	*10 030	8 230	*8 330	6 390	*7 280	5 120	6 520	4 170	*5 480	3 600	13.1 m		
	5 ft	lb							*28,120	23,990	*21,700	17,770	*18,070	13,800	*15,830	11,030	14,040	8,980	*12,070	7,950	43.1 ft		
	0 m	kg							*14 360	10 570	*11 010	7 850	*9 020	6 130	*7 750	4 940	6 400	4 070	*5 720	3 620	13.0 m		
	0 ft	lb							*16,860	*16,860	*31,060	22,820	*23,840	16,940	*19,570	13,240	*16,740	10,660	13,800	8,760	12,610	7,980	42.6 ft
	-1.5 m	kg							*9 590	*9 590	*15 090	10 300	*11 670	7 610	9 490	5 950	*7 630	4 820	6 330	4 000	*5 900	3 730	12.6 m
	-5 ft	lb							*21,960	*21,960	*32,680	22,220	*25,290	16,420	20,450	12,850	*16,460	10,400	13,660	8,630	13,020	8,220	41.4 ft
	-3 m	kg	*6 830	*6 830	*8 480	*8 480	*12 870	*12 870	*15 300	10 220	*11 990	7 500	9 390	5 860	*7 570	4 760	6 330	3 990	*6 260	3 960	12.1 m		
	-10 ft	lb	*15,300	*15,300	*19,140	*19,140	*29,350	*29,350	*33,160	22,040	*25,980	16,180	20,240	12,650	*16,340	10,280	13,955	8,796	13,850	8,750	39.6 ft		
-4.5 m	kg	*10 000	*10 000	*12 140	*12 140	*17 180	15 920	*15 050	10 280	*11 930	7 510	9 390	5 860	*7 600	4 790			6 880	4 360	11.3 m			
-15 ft	lb	*22,460	*22,460	*27,420	*27,420	*39,210	34,260	*32,600	22,160	*25,830	16,200	20,250	12,660	*16,420	10,360			15,270	9,670	37.0 ft			
-6 m	kg	*13 610	*13 610	*16 570	*16 570	*18 570	16 240	*14 270	10 460	*11 400	7 620	*9 300	5 970					*7 690	5 050	10.3 m			
-20 ft	lb	*30,630	*30,630	*37,570	*37,570	*40,140	34,960	*30,850	22,570	*24,610	16,470	*19,990	12,920					*17,010	11,280	33.5 ft			
-7.5 m	kg			*22 510	*22 510	*16 410	*16 410	*12 770	10 780	*10 150	7 880							*8 010	6 350	8.9 m			
-25 ft	lb			*48,280	*48,280	*35,230	*35,230	*27,370	23,300	*21,650	17,080							*17,720	14,330	28.7 ft			
-9 m	kg					*12 770	*12 770	*9 830	9 830									*8 170	*8 170	6.9 m			
-30 ft	lb					*26,760	*26,760	*20,310	20,310									*17,990	*17,990	21.8 ft			
-6 m	kg			*20 790	*20 790	*15 130	*15 130											*11 300	*11 300	5.8 m			
-20 ft	lb			*44,070	*44,070	*31,910	*31,910											*24,880	*24,880	18.4 ft			

Notes: 1. Machine in "Fine Mode-F" (Power Boost) for lifting capacities. 2. The above loads are in compliance with SAE J1097 and ISO 10567 Hydraulic Excavator Lifting Capacity Standards. 3. Rated loads do not exceed 87% of hydraulic lifting capacity or 75% of tipping load. 4. Rated loads marked with an asterisk (\*) are limited by hydraulic capacity rather than tipping load.



# EQUIPMENTS.

## STANDARD EQUIPMENT

### Engine

Turbocharged, 4 stroke diesel engine with water cooling, direct injection and charged air cooler that meets Tier 4f EU (Stage IV) requirements

Air filter with indicator

Air intake heater

Cyclone pre-cleaner

Electric engine shut-off

Fuel filter and water separator

Fuel filler pump: 13.2 gal/min (50 l), with automatic shut-off

Alternator, 80 A

### Electric/Electronic control system

Contronics

Advanced mode control system

Self-diagnostic system

Machine status indication

Engine speed sensing power control

Automatic idling system

One-touch power boost

Safety stop/start function

Adjustable 8inch LCD color monitor

Master electrical disconnect switch

Engine restart prevention circuit

High-capacity halogen lights:

Frame-mounted 2

Boom-mounted 2

Batteries, 2 x 12 V / 200 Ah

Start motor, 24 V / 7 kW

### Hydraulic system

Hose rupture valve: boom

Overload warning device

Automatic sensing hydraulic system

2-pump flow bucket circuit

Summation system

Boom priority

Arm priority

Swing priority

Boom, arm and bucket regeneration valves

Swing anti-rebound valves

Boom and arm holding valves

Multi-stage filtering system

Cylinder cushioning

Cylinder contamination seals

Auxiliary hydraulic valve

Automatic two-speed travel motors

Hydraulic oil, ISO VG 46

### Frame

Access way with handrail

Tool storage area

Punched metal anti-slip plates

Undercover (heavy-duty)

### Cab and interior

ROPS (ISO12117-2) certified cab

Silicon oil and rubber mounts with spring

Travel pedals and hand levers

Adjustable operator seat and joystick control console

Control joysticks with 4 switches each

Heater & air-conditioner, automatic

Flexible antenna

AM/FM stereo with MP3, USB and bluetooth input

Hydraulic safety lock lever

Cab, all-weather sound suppressed, includes:

Cup holders

Door locks

Tinted glass

Floor mat

Horn

Large storage area

Pull-up type front window

Removable lower windshield

Seat belt

Safety glass

Sun screens, front, roof, rear

Rain shield

Windshield wiper with intermittent feature

Rear view camera

Master key

### Undercarriage

Undercover (heavy-duty)

Hydraulic track adjusters

Greased and sealed track link

Track Guard

### Track shoes

800 mm(32") with triple grousers

### Digging equipment

Boom: 21' 2" (6.45 m) HD

Arm: 10'6" (3.2 m) HD

Manual centralized lubrication

## OPTIONAL EQUIPMENT

### Engine

Block heater: 120 V, 240 V

Oil bath pre-cleaner

Diesel coolant heater, 10 kW

Water separator with heater

Auto engine shutdown

### Electric

Extra work lights: Halogen/LED

Cab-mounted 3

Boom-mounted 2

Counterweight-mounted 1

Travel alarm

Anti-theft system

Rotating warning beacon

## OPTIONAL EQUIPMENT

### Hydraulic system

- Hose rupture valve: arm
- Boom float function
- Hydraulic piping:
  - Work tool management system (up to 20 programmable memories)
  - Hammer & shear, 1 and 2 pump flow
  - Hammer & shear:
    - variable flow and pressure pre-setting
  - Additional return filter
  - Slope & rotator
  - Grapple
  - Oil leak (drain) line
  - Quick coupler piping
- Volvo hydraulic quick coupler S3
- Volvo hydraulic quick coupler UQC38
- Hydraulic oil, ISO VG 32
- Hydraulic oil, ISO VG 46
- Hydraulic oil, ISO VG 68
- Hydraulic oil, biodegradable 46
- Hydraulic oil, longlife oil 32
- Hydraulic oil, longlife oil 46
- Hydraulic oil, longlife oil 68

### Counterweight

- 13,670lb (6 200 kg), 14,770lb (6 700 kg), 15,980lb (7 250 kg)
- 18,080 lb (8 200 kg) for long reach

### Cab and interior

- Fabric seat with heater
- Fabric seat with heater and air suspension
- Pilot control pattern change
- Opening top hatch
- Falling object guard (FOG)
  - Frame-mounted
  - Cab-mounted
- Cab-mounted falling object protective structure (FOPS)
- Smoker kit (ashtray and lighter)
- Safety net for front window
- Lower wiper with intermittent control
- Anti-vandalism kit
- Specific key

### Undercarriage

- Full track guard

### Track shoes

- Track shoes 24/28/32/36" (600/700/800/900 mm) with triple grousers
- Track shoes 24" (600 mm) HD with triple grousers
- Track shoes 24" (600 mm) with double grousers

### Digging equipment

- Boom: 20'4" (6.2 m) ME, 27'11" (8.5 m) LR
- Arm: 8'6" (2.6 m) ME, 12'10" (3.9 m) HD, 16'5" (5.0 m) LR
- Linkage with lifting eye

### Service

- Tool kit, daily maintenance
- Tool kit, full scale
- Automatic lubrication system
- Air compressor

## SELECTION OF VOLVO OPTIONAL EQUIPMENT

### Auxiliary hydraulics Breaker/Shear Tilt / Rotator



### Side-view camera



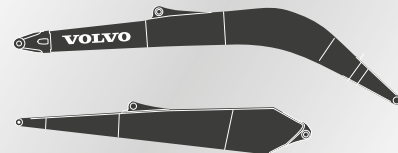
### LED Lights



### Air gun



### Long reach



### Mass excavation





# VOLVO CONSTRUCTION EQUIPMENT

Volvo Construction Equipment is different. Our machines are designed, built and supported in a different way. That difference comes from an engineering heritage of over 180 years. A heritage of thinking first about the people who actually use the machines. About how to help them be safer, more comfortable, more productive. About the environment we all share. The result of that thinking is a growing range of machines and a global support network dedicated to helping you do more. People around the world are proud to use Volvo.

Not all products are available in all markets. Under our policy of continuous improvement, we reserve the right to change specifications and design without prior notice. The illustrations do not necessarily show the standard version of the machine.

# **VOLVO**

**Volvo Construction Equipment**  
**[www.volvoce.com](http://www.volvoce.com)**

Ref. No. VOE2210009315  
Printed in USA, 1/2014 - 0,1  
Volvo, Shippensburg

English-22  
USA