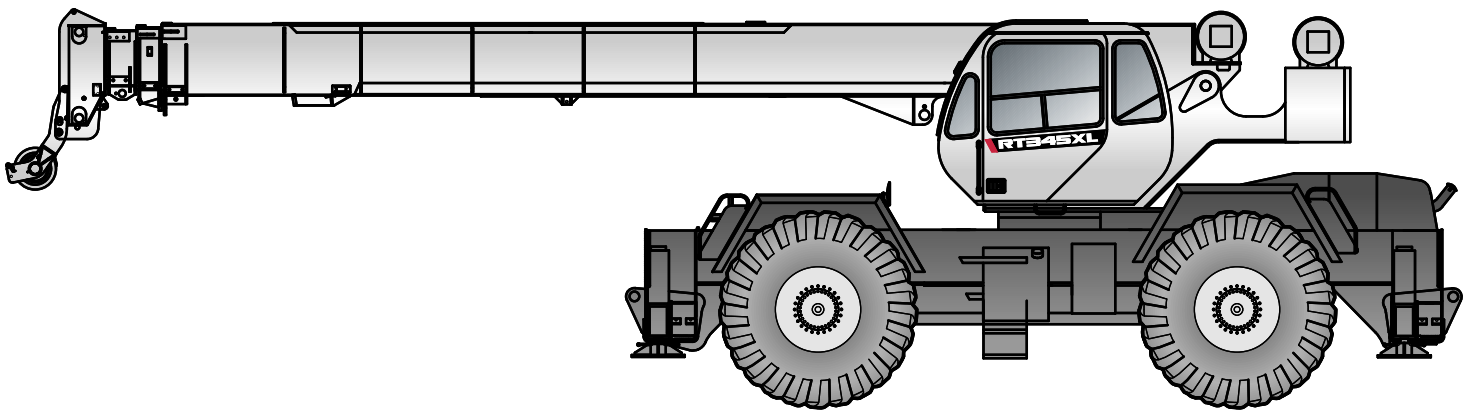




RT345_{XL} | Rough Terrain Crane 45 US ton Lifting Capacity



IMPERIAL

RT345_{XL}
ROUGH TERRAIN CRANE

CONTENTS

	Page:
Key	
.....	3
Dimensions	
Crane dimensions	5
Transport dimensions	5
Crane weights	6
Steering dimensions	7
Load charts	
Range graph main boom	8
Load chart main boom	9
Range graph jibs	10
Load chart jibs	11
Load chart pick & carry	12
Technical description	
Boom	13
Winch, rope and hook	13, 14
Upper structure	14
Cab, controls and safety devices	14
Understructure, engine, drive-line and hydraulic	15
Vehicle performances	15
Tires	15

KEY

	Counterweight		General performance
	Main boom		Telescoping mode
	Boom length		Boom elevation angle
	Tip height		Working radius
	Boom with extension		Max. boom length with extension
	Main boom with aux head		Distance from the hook to the head sheave axle
	Slewing / Allowable slewing range		Slewing locked / Slewing locked at specified position
	Slewing brake		Slewing gears
	Outriggers / Lifting on outriggers (100/50/0% extended)		Lifting on wheels / Pick & Carry
	Main winch		Auxiliary winch
	Winch speed		Rope length
	Rope – Standard / Optional		Max. line pull
	Rope diameter		Tires
	Hook block		Controls
	Cab		Engine
	Load limiter / Load indicator		Steering
	Mechanical transmission		Speed
	Hydraulics		Heating / Air conditioning
	Working temperature		Gradeability
	Lights		Gross vehicle weight
	Crane / Crane in standard configuration		Weight on front axle
	Crane without counterweight		Weight on rear axle

HIGHLIGHTS

RT345^{XL}

HIGHLIGHTS

- Rated capacity:
45 ton @ 9 ft
- Maximum main boom length:
105 ft
- Maximum tip height with main boom:
112 ft



Technical drawings of the Hyster H90-6.21 truck-mounted crane, showing dimensions in feet and inches.

Top View (Side Elevation):

- Crane Reach: 22'-0.00" FULL, 13'-9.00" MID, 9'-1.36" RET
- Crane Height: 22'-4.00"
- Crane Angle: $R9^{\circ}6.21^{\circ}$

Middle View (Side Elevation):

- Crane Length: 42'-1.09"
- Crane Height: 11'-8.31" (to top of crane), 11'-10.29" (to top of truck)
- Crane Offset: 1'-5.22"
- Truck Wheelbase: 22'-3.99"
- Truck Ground Clearance: 1'-4.07"
- Truck Height: 1'-11.74" (to top of chassis), 1'-4.53" (to top of chassis)
- Truck Wheel Offset: 5'-7.45" (to center of wheelbase), 5'-4.53" (to center of wheelbase)
- Truck Wheelbase: 25'-0.13"
- Truck Wheel Offset: 12'-6.45" (to center of wheelbase), 5'-4.53" (to center of wheelbase)
- Truck Wheel Offset: 5'-7.45" (to center of wheelbase), 5'-4.53" (to center of wheelbase)
- Truck Wheel Offset: 1'-4.07"
- Truck Wheel Offset: 1'-11.74"
- Truck Wheel Offset: 17'-0.97"
- Truck Wheel Offset: 24°
- Truck Wheel Offset: 20°

Bottom View (Rear View):

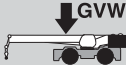
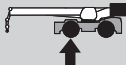
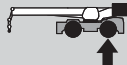
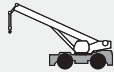








- Truck Wheelbase: 10'-7.00"
- Truck Wheel Offset: 5'-3.50"

Technical drawing of a crane showing dimensions and labels:

- Overall length: 1106'-1.06"
- Height from ground to top of boom: 9'-10.54"
- Distance between supporting surfaces and bottom of tires: 1'-11.75"
- Distance from front tire to center of gravity (COG): 6'-2.35"
- Distance from front tire to rear axle: 10'-7.35"
- Overall width: 24'
- Labels: "COG IS A TYPICAL EQUIPPED MACHINE" and "BOTTOM SURFACE OF OUTRIGGER BOXES SUPPORTING SURFACES"

CRANE WEIGHTS

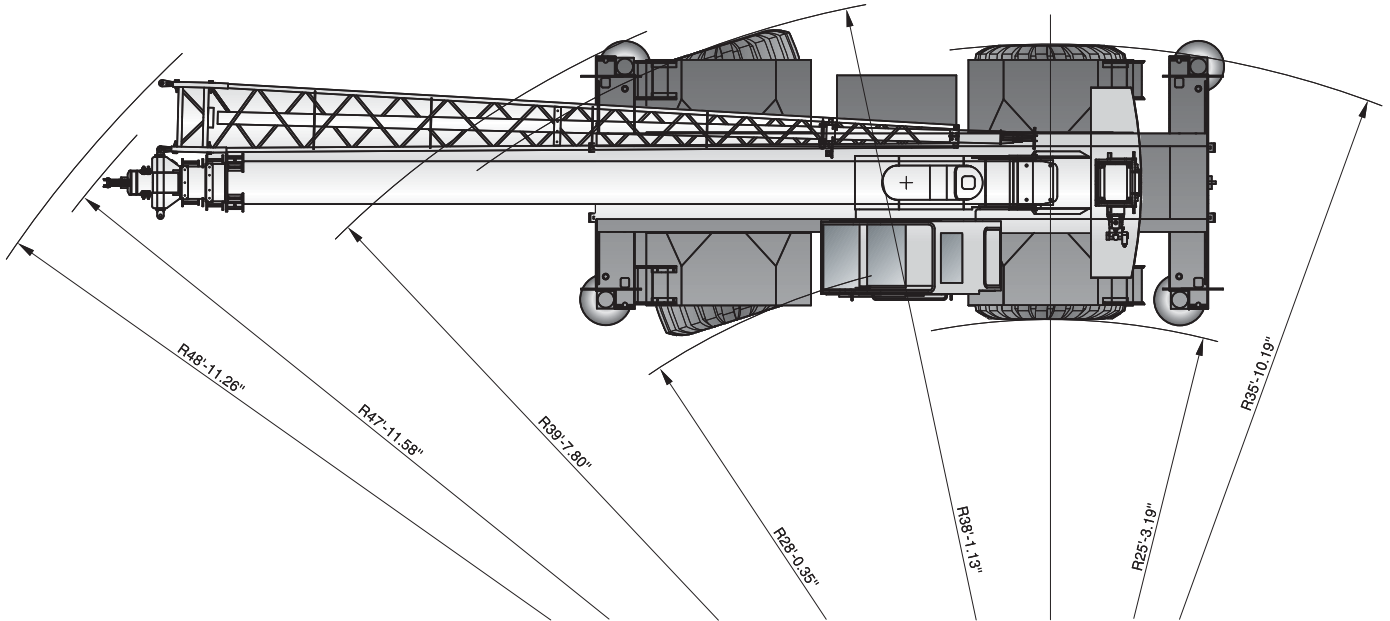
WEIGHTS

				
		67915 lb	34557 lb	33418 lb
Add / Subtract for main optional equipment				
	32 ft Stowed aside the boom	+ 1969 lb	-601 lb	- 251 lb
	32-49 ft Stowed aside the boom	+ 2575 lb	-78 lb	+446 lb
		+ 100 lb	+ 170 lb	- 70 lb
	2 With standard rope	+ 179 lb	-50 lb	+ 129 lb
	5 sheaves, 55 ton	+ 790 lb	+ 1169 lb	- 379 lb
	4 sheaves, 40 ton	+ 690 lb	+ 1017 lb	- 327 lb
	3 sheaves, 30 ton	+ 670 lb	+ 987 lb	- 317 lb
	Hook ball, 7 ton	+ 240 lb	+ 261 lb	- 21 lb

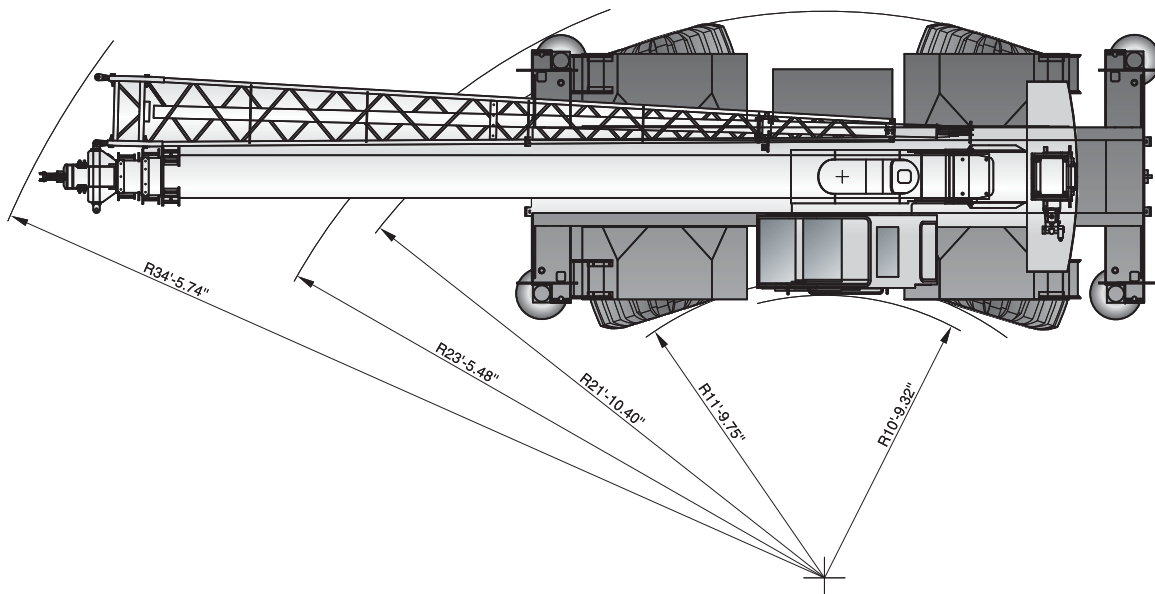
Weights are for Terex supplied equipment and are subject to 2% variation due to manufacturing tolerances

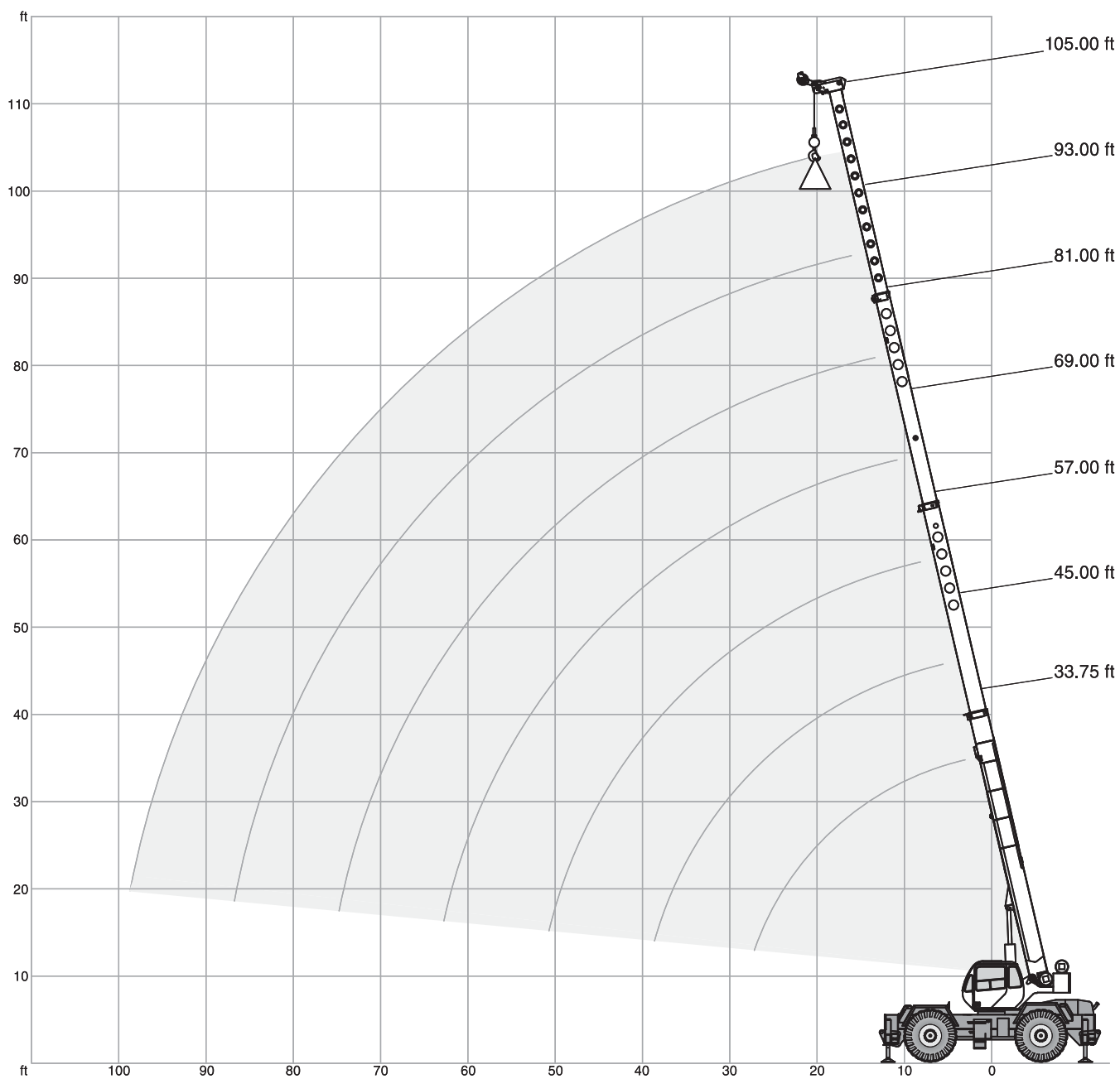
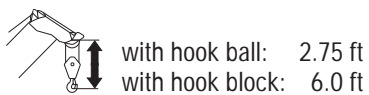
STEERING DIMENSIONS

TWO WHEEL STEER

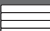







FOUR WHEEL STEER













 6.5 ton	 22 ft x 22.3 ft	 360°	AMERICAN STANDARD ASME B30.5
---	---	--	------------------------------

	 33.75 ft	45.0 ft	57.0 ft	69.0 ft	81.0 ft	93.0 ft	105.0 ft	
ft								ft
9	90000	-	-	-	-	-	-	9
10	64400	46500	-	-	-	-	-	10
12	58000	46500	46500	-	-	-	-	12
15	50700	46500	44500	41600	-	-	-	15
20	40400	38800	36400	34800	30600	-	-	20
25	30600	31600	31000	29400	26000	23400	-	25
30	-	25000	25600	25600	22500	20300	18600	30
35	-	20300	20900	21300	19600	17700	16200	35
40	-	16700	17400	17800	17400	15600	14400	40
45	-	-	14700	15100	15300	14100	12900	45
50	-	-	12400	12900	13100	12600	11600	50
55	-	-	-	11100	11300	11500	10400	55
60	-	-	-	9500	9800	9900	9500	60
65	-	-	-	-	8400	8500	8600	65
70	-	-	-	-	7200	7300	7400	70
75	-	-	-	-	6100	6300	6400	75
80	-	-	-	-	-	5500	5600	80
85	-	-	-	-	-	4700	4800	85
90	-	-	-	-	-	-	4200	90
95	-	-	-	-	-	-	3600	95
100	-	-	-	-	-	-	3100	100

 6.5 ton	 22 ft x 13.8 ft	 360°	AMERICAN STANDARD ASME B30.5
---	---	--	------------------------------

	 33.75 ft	45.0 ft	57.0 ft	69.0 ft	81.0 ft	93.0 ft	105.0 ft	
ft								ft
9	80000	-	-	-	-	-	-	9
10	64400	46500	-	-	-	-	-	10
12	58000	46500	46500	-	-	-	-	12
15	50700	46500	44500	41600	-	-	-	15
20	36600	37500	36400	34800	30600	-	-	20
25	23700	24700	25200	25500	25700	23400	-	25
30	-	17700	18200	18400	18600	18800	18600	30
35	-	13100	13700	14000	14200	14300	14400	35
40	-	9800	10600	10900	11100	11200	11300	40
45	-	-	8200	8600	8800	8900	9000	45
50	-	-	6400	6900	7100	7200	7300	50
55	-	-	-	5400	5700	5800	5900	55
60	-	-	-	4300	4600	4700	4800	60
65	-	-	-	-	3600	3800	3900	65
70	-	-	-	-	2800	3000	3100	70
75	-	-	-	-	2100	2300	2500	75
80	-	-	-	-	-	1800	1900	80
85	-	-	-	-	-	1200	1400	85
90	-	-	-	-	-	-	-	90

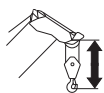
NOTES TO LIFTING CAPACITY

Lifting capacities do not exceed 85% of tipping load.

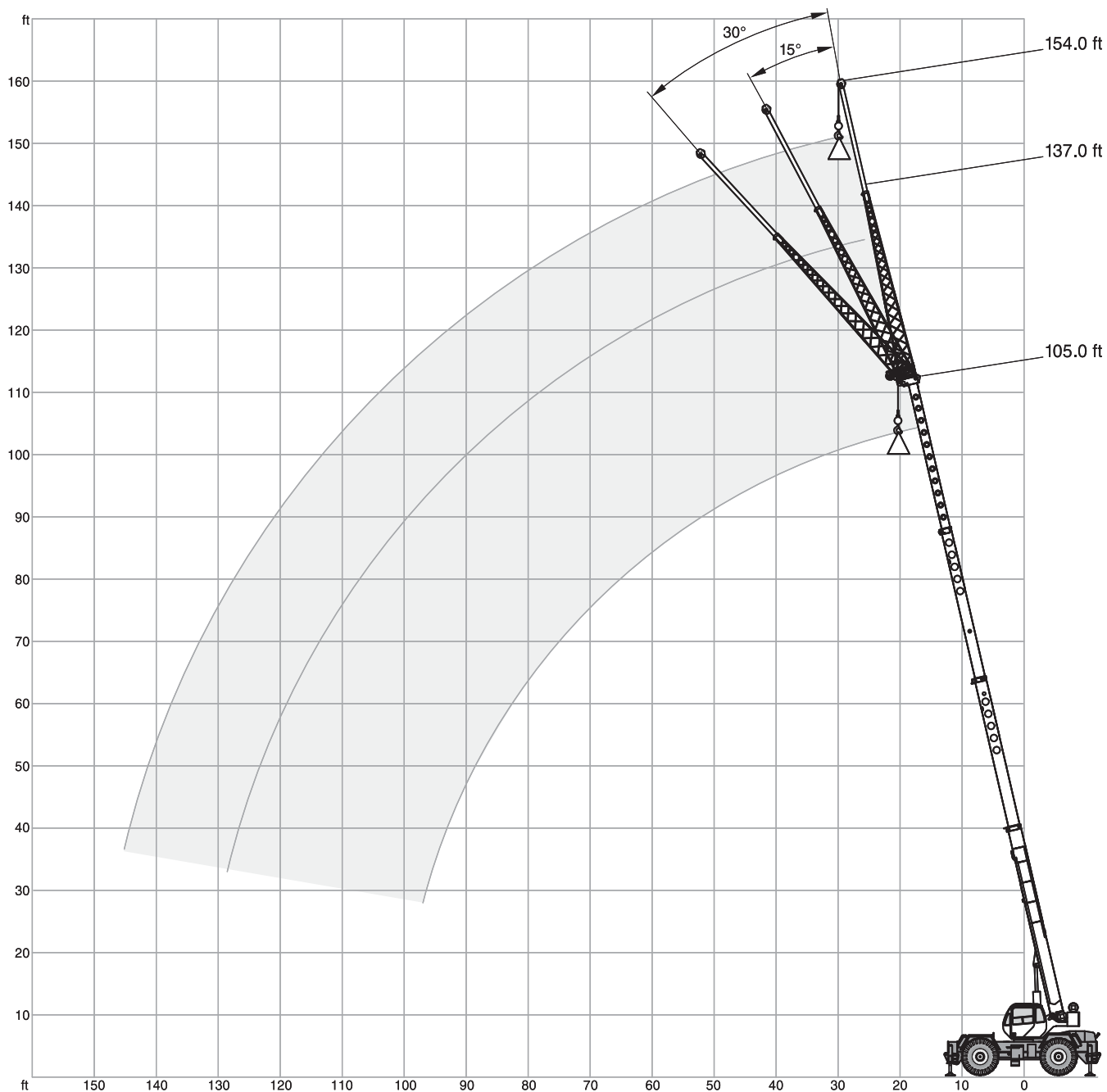
Weight of hook blocks and slings is part of the load, and is to be deducted from the capacity ratings.

Consult operation manual for further details.

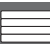


Note: Data published herein is intended as a guide only and shall not be construed to warrant applicability for lifting purposes. Crane operation is subject to the computer charts and operation manual both supplied with the crane.




with hook ball: 2.75 ft
with hook block: 6.0 ft





 **6.5 ton**
 **22 ft x 22.3 ft**
 **360°**
AMERICAN STANDARD ASME B30.5

 **105 ft**

ft		32 ft			49 ft			ft
		0°	15°	30°	0°	15°	30°	
50		8693	-	-	-	-	-	50
55		8005	-	-	-	-	-	55
60		7563	7991	-	-	-	-	60
65		7144	7420	6254	4908	3147	2514	65
70		6734	7070	6101	4176	3027	2460	70
75		6343	6772	5896	3859	2916	2409	75
80		5716	6493	5638	3636	2812	2360	80
85		5101	5840	5328	3448	2716	2314	85
90		4499	5054	4967	3277	2628	2269	90
95		3910	4328	4393	3077	2547	2226	95
100		3334	3661	3745	2974	2451	2185	100
105		2770	3052	3133	2843	2448	2145	105
110		2219	2499	2557	2684	2404	2087	110
115		1680	2003	2016	2497	2320	2140	115
120		1153	1563	1510	2282	2195	2102	120
125		639	1178	-	2041	2032	1972	125
130		-	-	-	1773	1828	1752	130
135		-	-	-	1478	1586	1444	135
140		-	-	-	1157	1304	-	140

NOTES TO LIFTING CAPACITY






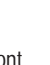
Lifting capacities do not exceed 85 % of tipping load.

Weight of hook blocks and slings is part of the load, and is to be deducted from the capacity ratings.

Consult operation manual for further details.

Note: Data published herein is intended as a guide only and shall not be construed to warrant applicability for lifting purposes. Crane operation is subject to the computer charts and operation manual both supplied with the crane.


6.5 ton
AMERICAN STANDARD ASME B30.5

	  (mph)			 max.
	 360°	 straight over front	 2.5	
ft				ft
10	34200	48600	40600	33.8
12	34300	42100	33300	33.8
15	21300	34800	28700	45.0
20	13100	26400	21500	45.0
25	8300	20300	16500	45.0
30	5700	14600	12900	45.0
35	4100	11200	10700	57.0
40	3000	8700	8700	57.0
45	2200	7000	7000	57.0
50	1500	5700	5700	69.0
55	-	4600	4600	69.0
60	-	3800	3800	81.0
65	-	2900	2900	81.0
70	-	2100	2100	81.0
75	-	1300	1300	93.0

NOTES TO LIFTING CAPACITY

Lifting capacities do not exceed 85% of tipping load.

Weight of hook blocks and slings is part of the load, and is to be deducted from the capacity ratings.






Consult operation manual for further details.

Note: Data published herein is intended as a guide only and shall not be construed to warrant applicability for lifting purposes. Crane operation is subject to the computer charts and operation manual both supplied with the crane.

TECHNICAL DESCRIPTION

BOOM

Standard configuration:






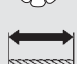
	4 sections full power	
	Fully synchronized	
	Min. / Max.	33.8 ft / 105 ft
	Max. tip height main boom	112 ft
	Boom elevation angle range (min. / max.) Boom raising / lowering time Boom extension / retraction time	-4° / +77° 39 s / 39 s 51 s / 47 s

Optional:







	Lattice type, side stow, pullout retracted / extended Angular offsets	32 ft / 49 ft 0° / 15° / 30°
	Max. with jib swung-on and pullout retracted/extended	137 ft / 154 ft
	Max. with jib swung-on, pullout retracted / extended	143 ft / 159 ft
	Single sheave Maximum tip height	112 ft
	Lattice type, side stow Angular offsets	32 ft 0° / 15° / 30°
	Max. with jib swung-on	137 ft
	Max. with jib swung-on	143 ft

WINCH, ROPE AND HOOK

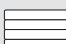



Standard configuration:

	Two speeds (Hi / Low range) Grooved drum Storage capacity	570 ft
	Maximum without load – Hi-range in 5th layer – Minimum without load – Hi-range in 1st layer –	533 ft / min 184 ft / min
	6 x 19 IWRC IPS	
		0.625 in
		450 ft
	Min. breaking strength Max. line pull permissible	17.9 ton 9080 lb






TECHNICAL DESCRIPTION

		Optional:	
	Two speeds Grooved drum Storage capacity Storage capacity of usable rope		570 ft 455 ft
	Maximum without load – Hi-range in 5th layer – Minimum without load – Hi-range in 1st layer –		533 ft / min 184 ft / min
	Hook ball with latch: rated load 4 sheaves: rated load 4 sheaves: rated load 4 sheaves: rated load		7 ton 30 ton 40 ton 50 ton
	5/8 in, rotational resistant compacted strand 18 x 19 or 19 x 19		
			0.625 in
			450 ft
	Min. breaking strength Max. line pull permissible		22.7 ton 9080 lb

UPPER STRUCTURE

		Standard configuration:	
	Weight without auxiliary winch		6.5 ton
	Non stop Maximum speed without load		360° 2.8 rpm
	Hydraulic motor Planetary reducer		
	Foot pedal actuated Possibility to set up a partial and constant braking force		

CAB, CONTROLS AND SAFETY DEVICES

		Standard configuration:	
	Sliding door on the left side Sliding window on the right side Tilting skylight glass hinged tinted Removable front windshield Six ways adjustable seat		
	Armrest mounted dual axis electro-proportional joysticks Controls for winch and winch rotation indicator, slewing, boom elevation Foot controls for boom telescoping, swing brake and engine throttle Steering wheel column mounted controls for gear shifting Dashboard mounted switches for steering mode, outriggers, 360° house lock end general instrumentation and other controls		
	Electronic load indicator and limiter with graphic interface		
	Hydraulic driven heater and defroster		
		Optional:	
	Hydraulic driven heater / AC and defroster LP heater		

TECHNICAL DESCRIPTION

UNDERSTRUCTURE, ENGINE, DRIVE-LINE AND HYDRAULIC

Standard configuration:



Hydraulic independent:

100 % extended outrigger footprint area

491 ft²

50 % extended outrigger footprint area

347 ft²

0 % extended outrigger footprint area

204 ft²

Floating ground bearings diameters (area)

18 in (254 in²)

Single outrigger jack extending and retracting time

8 s

Single outrigger beam extending and retracting time

9 s



Cummins QSB-215 6 cylinders

Rated power

160 HP @ 2200 rpm

Maximum gross torque

540 ft-lb @ 1400 rpm

Intake: turbocharged with intercooler

Fuel type

Diesel

Fuel tank capacity

50 gallons



6 x 6 powershift with torque converter

4WD if traveling in Lo-range

Rigid mounted front axle

Oscillating mounted rear axle

Automatic rear axles oscillation lock when superstructure is swung by 10° from centerline in either directions

Split air over hydraulic service brakes system



3 modes hydraulic power steering

Front wheels mode – minimum steering curb clearance radius

12 ft

All wheels concentric steering mode – minimum steering curb clearance radius

25 ft

All wheels crab steering mode



HYDR

Gear pump for main and auxiliary winch

Gear pump for boom hoisting and telescoping

Gear pump for steering, outriggers and slewing

Hydraulic oil tank capacity

114 gallons

Hydraulic oil filters

25 µm



Old environment kit

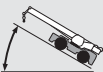
Optional:



4 steering modes: front wheels, rear wheels, all wheels concentric, all wheels crab

VEHICLE PERFORMANCES

Standard configuration:



Max. in 1st gear

240 %

Max. in 6th gear

5.2 %



Max. (6th gear)

24.5 mph



Min. / Max. – standard configuration

-20° / + 125 °F

Min. / Max. – with cold environment kit

-40° / + 125 °F

TIRES

Standard configuration:



Wide earth moving style thread (E3)

26.5 x 25-26 PR



Wide earth moving style thread (E3)

Optional:

21.00 x 25-28 PR



Developed by Global Marketing

Terex Cranes

Global Marketing

Dinglerstraße 24

66482 Zweibrücken

Germany

Tel. +49 (0) 6332 830

Email info.cranes@terex.com

www.terexcranes.com

YOUR CONTACT INFORMATION

Effective Date: February 2010. Product specifications and prices are subject to change without notice or obligation. The photographs and/or drawings in this document are for illustrative purposes only. Refer to the appropriate Operator's Manual for instructions on the proper use of this equipment. Failure to follow the appropriate Operator's Manual when using our equipment or to otherwise act irresponsibly may result in serious injury or death. The only warranty applicable to our equipment is the standard written warranty applicable to the particular product and sale and Terex makes no other warranty, express or implied. Products and services listed may be trademarks, service marks or trade-names of Terex Corporation and/or its subsidiaries in the USA and other countries. All rights are reserved. Terex® is a registered trademark of Terex Corporation in the USA and many other countries.