



MAC-Mega Articulated Truck Conversion

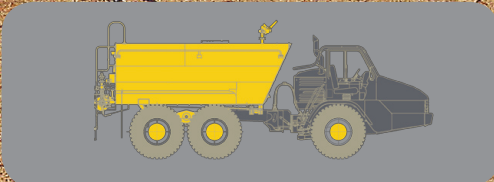
SPECIALTY HAULAGE SOLUTIONS FOR CONSTRUCTION AND MINING



Applications for
JOHN DEERE®



Tank sizes may vary depending on application. For other models and custom sizes, contact MEGA or your local dealer.



JOHN DEERE®

MEGA MODEL	TANK SIZE	CHASSIS CONFIGURATION
MAC5	5k* gal	250D ADT
MAC6	6k gal	300D ADT
MAC7	7k gal	300D X** ADT
MAC7	7k gal	350D ADT
MAC8	8k gal	400D ADT

*X = Extended Frame ** K=1,000 gallons

MEGA CORP.®

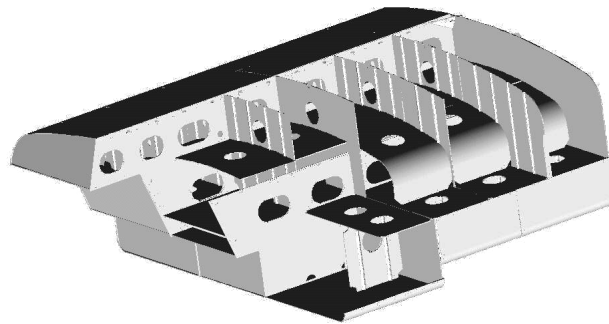
700 Osuna Rd. N.E. • Albuquerque, NM 87113 • 1-800-345-8889 • 505-345-2661 • Fax 505-345-6190
www.megacorpinc.com

STANDARD FEATURES

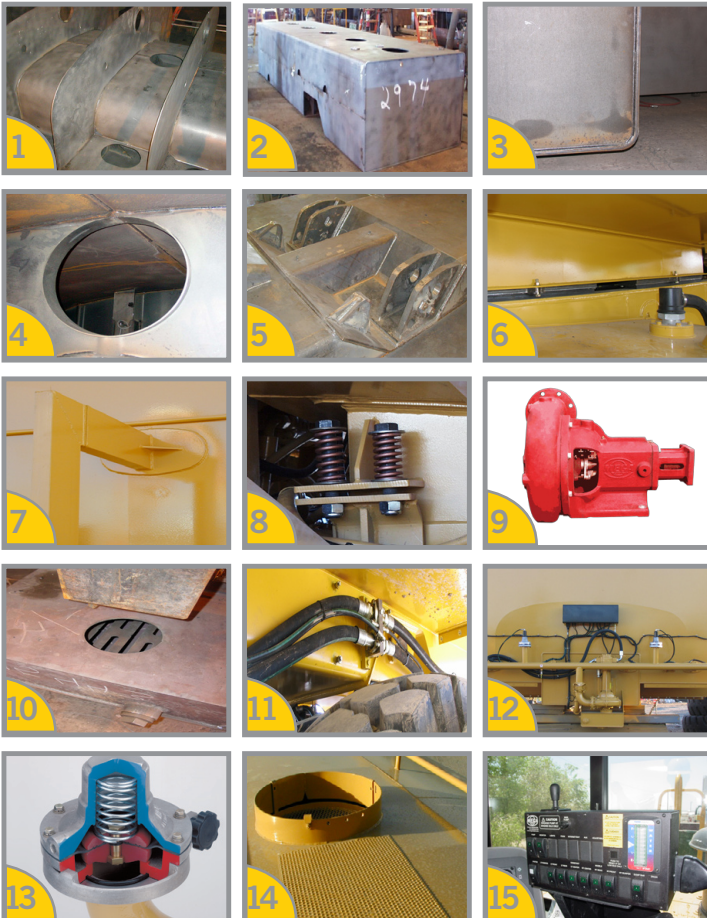
- 1 Mega Anti-Surge Stabilization System (M.A.S.S.)
- 2 Structural Center Tunnel
- 3 Full Welds Throughout Entire Structure
- 4 Banded Manholes
- 5 Line-bored, Heavy-Duty Pivot Assembly Integral to Tunnel
- 6 Heavy-Duty Frame Rails With Bolt-On Body Pads Equivalent to OEM Body
- 7 Reinforcement Pads For All Mounting Points
- 8 Spring-Coupling Mounting System to Allow Torsional Flexibility
- 9 Close-Coupled Water Pump/Hydraulic Motor
- 10 Sump Box With Slotted Steel Grate
- 11 Externally Routed Hydraulic Lines to Eliminate Cross-Contamination
- 12 Rear Spray Bar Can be Positioned to Desired Height
- 13 Patented Spray Heads With 360 Degree Rotation & Variable Opening Adjustment
- 14 Anti-Skid Perforated Metal Walkway With a Variety of Banded Access Port Configurations
- 15 Electronic Cab Control Module

OPTIONAL FEATURES

- 1 Stainless Steel Hydraulic or Electric Monitor
- 2 Variety of Nozzles Including Remote Control & Foam Eduction
- 3 Conical Fill
- 4 Manual & Powered Hose Reels With Various Sizes
- 5 Front Bumper Spray
- 6 Vertical Side Spray - Front or Rear
- 7 Swivel Spray Head
- 8 Powered or Gravity Dump Bar
- 9 Powered or Manual Dump Valves
- 10 Intermittent Spray Control
- 11 In-Cab Water Level Indicator
- 12 Stainless Steel Piping & Water Pump
- 13 Suction Loading Pump (Limited Applications)
- 14 Epoxy Coated Interior
- 15 Hoist Compatible For Service Access (Rigid Frame Only)



STANDARD FEATURES



OPTIONAL FEATURES

