

Crawler excavator

R 936
Litronic®

Operating Weight: 30,550 – 33,850 kg
Engine Output: 160 kW / 218 HP
Bucket Capacity: 1.00 – 1.75 m³



LIEBHERR

R 936 Litronic®

Operating Weight: 30,550 – 33,850 kg
Engine Output: 160 kW / 218 HP
Bucket Capacity: 1.00 – 1.75 m³



Comfort

In the cab the driver can look forward to a workplace designed in accordance with the very latest findings in ergonomic science, with emphasis on comfort and ease of operation. The optimised arrangement of the hydraulic hoses means that the driver has an even wider field of vision, and the heating and climate control system fitted as standard means pleasant working conditions inside, whatever the weather. Liebherr crawler excavators are also particularly easy to service – maintenance tasks can be carried out easily and rapidly at readily accessible service points.

Reliability

Liebherr provides customers with solutions that lead the way for the future, solutions for maximum equipment reliability and availability, solutions which satisfy the most extreme demands for performance and quality. With more than 50 years experience in the construction of hydraulic excavators, we have an advantage in design and consultation that clearly sets us apart.

Performance

Thanks to its innovative Advanced excavator system technology, the R 936 crawler excavator has performance features that are truly unique. Characteristic elements of this system technology include the particularly effective and energy-efficient Positive Control twincircuit hydraulic system, which was specifically designed for machines with a high level of superimposed functions and operational movements. The electronic pump control arrangement sets this technology apart, creating a new standard for performance and quantity control that entirely matches the operator's needs.

Economy

Crawler excavators from Liebherr guarantee maximum productivity. The optimum interplay of hydraulics and electronics means that individual movements and superimposed movements alike can be carried out particularly efficiently. And, perhaps last but by no means least, the perfect harmonisation of all the components means that energy expenditure during operation can be kept to an absolute minimum.





Extremely maintenance-friendly

- All maintenance points are easily accessible
- Daily routine servicing work can be carried out very rapidly, reliably, and in comfort
- The R 936 comes as standard with a fully-automatic central lubrication system





Comfort

In the cab the driver can look forward to a workplace designed in accordance with the very latest findings in ergonomic science, with the emphasis on comfort and ease of operation. The optimised arrangement of the hydraulic hoses means that the driver has an even wider field of vision, and the heating and climate control system fitted as standard means pleasant working conditions inside, whatever the weather. Liebherr crawler excavators are also particularly easy to service – maintenance tasks can be carried out easily and rapidly at readily accessible service points.

Safe work - with a clear layout

A pleasant workplace

The entirely new design of the cab provides plenty of room, and creates a pleasant sense of space. Cab windows in the front, the roof, and on the right are made of break-resistant two-pane safety glass. The front windscreen is a two-part design and can be completely retracted. The cab meets ROPS requirements, providing the driver with even more protection.

High-resolution colour display

The 7-inch high-resolution colour display can be operated as a touch-screen system. Thanks to its high resolution, the video-style display reproduces the image from the rear area monitoring camera in the best possible quality. It comes with versatile adjustment, control, and monitoring capabilities, and is designed to be glare-free.

Wide camera field of vision

The reversing camera for the R 936, fitted as standard, provides a wide-ranging view of the area behind the machine.

Fully automatic climate control system

The climate control system has more than 12 adjustable nozzles for individual control of air flow, and can be operated via the display.

Minimal noise and vibration

The new cab on the Liebherr crawler excavator meets the standards for noise emissions and whole-body vibrations, which makes work a pleasure.

Hydraulic reservoir stop valve

- Easy and quick interruption of the oil circuit between hydraulic reservoir and hydraulic system
- No drainage of fluid necessary for service or repair work on the hydraulic system



Touch-screen display

- 7-inch touch-screen with colour display
- Wide range of adjustment, check, and monitoring possibilities
- Tough, reliable design (sealing tightness class IP 65)
- Video capacity with high resolution, reproduces the image from the rear area monitor camera in best possible quality



Spare parts service

- Any spare parts required are available within 24 hours – world-wide. And that means high operational readiness of the machines, wherever, whenever
- Over 80,000 spare parts in stock at all times



Reliability

Liebherr provides customers with solutions that lead the way for the future, solutions for maximum equipment reliability and availability, solutions which satisfy the most extreme demands for performance and quality. With more than 50 years experience in the construction of hydraulic excavators, we have an advantage in design and consultation that clearly sets us apart.

High stability undercarriage

Better force distribution The undercarriage concept leads to increased performance with improved service life. Thanks to the connection of the middle section being extended as far as the ends of the chassis beams, known as the X-design, the forces are better distributed, which increases the service life of the undercarriage.

Technology with perspective

Quality right down to the last detail The at-a-glance layout of the hydraulic, lubrication, and electricity lines makes for optimum functional reliability and maximum availability of the unit. Best possible corrosion protection is guaranteed thanks to components and modules being finalpainted and surface treated before assembly.

Perfect optimisation Individual components of the drive train, manufactured in-house, such as diesel engine, traction drive, rotary actuators, operating pump and hydraulic cylinder are perfectly optimised with one another. As components of a total system designed for long operational life, they guarantee maximum possible reliability.

Safety of functionality

Safety of functionality ROPS cab structure The cab is equipped with an integrated roll-over protection system (ROPS) in accordance with ISO 12117-2, guaranteeing driver safety in any situation.

Automatic control of functionality The operator can entirely focus on his job, because the integrated on-board electronic continuously performs a comparison with pre-determined target data. Eventual deviations from the target parameters are shown on the display.



LiDAT data transfer system

- Complete fleet management, all from one source
- Optimized economical performance of the machine park thanks to detailed view of the distribution of operating states and times
- Reports on capacity commitment and the use of the machine park can be called up daily via the Web portal
- Precise location of the machine
- Regional delimitation and fixed down-times increase safety and reliability



Key technologies – Made by Liebherr

- Perfect matching of the components to construction machine operations
- Engine, hydraulic pumps, transfer gears, travel drives, slewing drives, slewing rings, and electronic components – all from the same source
- Main steel components, such as undercarriage, equipment modules, and slewing superstructure, all designed by Liebherr



Wide range of operational possibilities

- Large number of equipment variants
- Versatile selection of undercarriage variants
- Broad operational spectrum, from earthmoving, to grading work, to demolition



Performances

Thanks to its innovative excavator system technology, the R 936 crawler excavator has performance features that are truly unique. Characteristic elements of this system technology include the particularly effective and energy-efficient Positive Control twin-circuit hydraulic system, which was specifically designed for machines with a high level of superimposed functions and operational movements. The electronic pump control arrangement sets this technology apart, creating a new standard for performance and quantity control that entirely matches the operator's needs.

Integrated excavator system technology

High-tech for high performance

Among the high-tech equipment on the Advanced version of the R 936 is the newly-developed integrated excavator system technology. This is based on the Positive Control hydraulic system, controlled by Liebherr electronics and the system software. The sensors located at strategic points on the machine form the basis for an intelligent system that allows for fast and fluent working.

Positive Control twin-circuit hydraulic system

When travelling straight or in a curve, and during levelling work, the two pump circuits of the hydraulic system are separated or grouped together, as the need arises. Separation of the systems means that different consuming components can be supplied with different load pressures independently, and saving energy too. By contrast, grouping the pump circuits allows for maximum speeds with individual or superimposed movements, and that means optimum energy utilisation.

Power and speed

Faster work cycles

The R 936 achieves particularly fast work cycles, thanks, for example, to the powerful slewing drive of the superstructure, the rapid slewing rates, and the creation of high slewing torque.

Operating pressure

With an operating pressure of 380 bar, the R 936 achieves higher hydraulically limited load capacities and higher digging forces, of up to 152 kN, and break-out forces of up to 193 kN; perfect for more difficult operational situations such as canal or pipeline construction.

Liebherr Diesel Engine

- Specifically designed for construction equipment
- Maximum output at low engine speed
- Long life expectancy
- LIDEC-Engine Control – Liebherr Diesel Engine Control
- State-of-the-art technology with common rail injection system
- Electronically regulation of injection-amount and-timing
- Complies with emission standard IIIb/Tier 4i



Modular quick-change system made by Liebherr

- Likufix – connects all hydraulically mounted tools without having to leave the operator's cab, maximum productivity due to tool change being performed in a matter of seconds
- The suitable digging tool for every application. Your machine is a multi-functional tool carrier and will pay for itself very quickly indeed
- Mechanic and hydraulic Liebherr quick-change adapter



Innovative tooth system

- Patented tooth system, consisting of tooth holder, tooth, securing bolts, and protective plugs
- Teeth can be replaced rapidly and without the use of force
- Tooth shapes for every operational Situation



Economical

Crawler excavators from Liebherr guarantee maximum productivity. The optimum interplay of hydraulics and electronics means that individual movements and superimposed movements alike can be carried out particularly efficiently. And, perhaps last but by no means least, the perfect harmonisation of all the components means that energy expenditure during operation can be kept to an absolute minimum.

Economic use around the clock

Engine

The Liebherr engine delivers full power even at low speeds. It is equipped with direct injection, turbocharger and intercooling and has an excellent torque characteristic with high power reserves.

Automatic idling

Fuel consumption and emission levels can be reduced thanks to this selectable feature: when the excavator is not moving or in operation, the engine speed is automatically reduced to idle.

Service orientated

Safe, non-slip steps and ergonomically positioned handles ensure safe access to all maintenance parts. All necessary maintenance work can be carried out quickly and cost-effectively thanks to the clever design.

Top technology for maximum profitability

Electronic engine speed sensing control

This regulating system causes an efficient conversion of the engine output in hydraulic performance – which results in better utilization of the available engine power. The result: higher digging forces, shorter cycle times and lower fuel consumption.

Liebherr Tool-Management-System

A unique range of digging tools and quick coupler modules guarantee an economical advantage for jobs with frequent tool changes. Based on years and years of field experience, all components of the Liebherr Tool-Management System originate from its own research and production.



Central lubrication system

- The fully-automatic central lubrication system, fitted as standard, allows for rapid maintenance: It saves time-consuming individual lubricating and downtime
- All the lubrication points on the superstructure of the vehicle and the attachment hydraulics are supplied, with the exception of the connecting plate
- Safety aspect: The driver no longer needs to leave the cab to carry out lubrication



Liebherr Lubricants

- Liebherr lubricants are specially developed for application in Liebherr earth moving and material handling machines and guarantee a long working life whilst simultaneously delivering the highest possible performance
- Being designed especially for your Liebherr machines, Liebherr lubricants contribute significantly to lowering your operating and maintenance costs. Also, being a provider of complete systems we help you to drastically reduce the range of products you require, thereby helping you to save on storage space and related costs

Technical Data



Engine

Rating per ISO 9249	160 kW (218 HP) at 1,800 RPM
Model	Liebherr D 934 A7
Type	4 cylinder in-line
Bore/Stroke	122/150 mm
Displacement	7.0 l
Engine operation	4-stroke diesel
Exhaust gas treatment	Common-Rail, bi-turbo
Cooling	particle filter with active regeneration
Air cleaner	emission standard level IIIB/Tier 4i
Fuel tank	water-cooled and integrated motor oil cooler, after-cooled and fuel cooled
Electrical system	dry-type air cleaner with pre-cleaner, primary and safety elements
Voltage	580 l
Batteries	24 V
Starter	2 x 180 Ah/12 V
Alternator	24 V/7.8 kW
Engine idling	three phase current 28 V/80 A
Motor management	sensor-controlled
	connection to the integrated excavator system controlling via CAN-BUS to the economical utilisation of the service that is available



Hydraulic System

Hydraulic system	Positive Control. Dual circuit hydraulic system for independent and need-based quantity allotment via the hydraulic pumps; sensor-guided. Features high system dynamics and sensibility provided by integrated system controlling
Hydraulic pump	Liebherr variable displacement pump built in transversal plate style, in parallel arrangement with integrated transfer box
Max. flow	2 x 238 l/min.
Max. pressure	380 bar
Pump management	electronic pump management via the integrated system controlling (CAN-BUS) synchronous to the control block
Hydraulic tank	280 l
Hydraulic system	max. 480 l
Hydraulic oil filter	1 full flow filter (10 µm)
Hydraulic oil cooler	compact cooler, consisting of a water cooler, sandwiched with hydraulic oil cooler, gearbox oil cooler, fuel cooler and after-cooler cores and hydrostatically driven fan
MODE selection	adjustment of engine and hydraulic performance via a mode pre-selector to match application, e.g. for especially economical and environmentally friendly operation or for maximum digging performance and heavy-duty jobs
RPM adjustment	stepless adjustment of engine output via RPM at each selected mode
Liebherr Tool-Control	10 preadjustable pump flows and pressures for add-on tools



Hydraulic Controls

The controlling is conducted via the integrated bagger system technology, input and output modules, communicated via the CAN-BUS with the electronic central unit.

Power distribution	via control valve with integrated safety valves
Servo circuit	
Attachment and swing	proportional via joystick levers
Travel	- with proportionally functioning foot pedals and adjusted with a plugable lever
	- speed pre-selection
Additional functions	proportional regulation via slide switches or foot pedals



Swing Drive

Drive by	Liebherr swash plate motor, shockless and anti-reaction
Transmission	Liebherr compact planetary reduction gear
Swing ring	Liebherr, sealed single race ball bearing swing ring, internal teeth
Swing speed	0 – 10 RPM stepless
Swing torque	95 kNm
Holding brake	wet multi-disc (spring applied, pressure released)



Operator's Cab

Cab	ROPS safety cab structure with individual wind-screens or featuring a slide-in subpart under the ceiling, work headlights integrated in the ceiling, a door with a side window (can be opened on both sides), large stowing and depositing possibilities, shock-absorbing suspension, sound-damping insulating, tinted laminated safety glass, separate window shades for the sunroof window and windscreen, 12 V plug, storage bins, lunch-box, cup holder
Operator's seat	Comfort seat, airsprung with automatic weight adjustment, vertical and horizontal seat damping including consoles and joysticks. Seat and arm-rests adjustable separately and in combination, seat heating as standard
Control system	arm consoles, swinging with the seat
Operation and displays	large high resolution colour display with self-explanatory operation via touch screen, video, versatile adjusting, control and monitoring facilities, e.g. climate control, implement and tool parameters
Air-conditioning	standard automatic air-conditioning, ambient air function, fast de-icing and demisting at the press of a button, air vents can be operated via a menu; ambient air and fresh air filters can be easily replaced and are accessible from the outside; heating-cooling unit, designed for extreme outside temperatures, sensors for solar radiation, inside and outside temperatures
Noise emission	
ISO 6396	L_{pA} (inside cab) = 72 dB(A)
2000/14/EC	L_{WA} (surround noise) = 104 dB(A)



Undercarriage

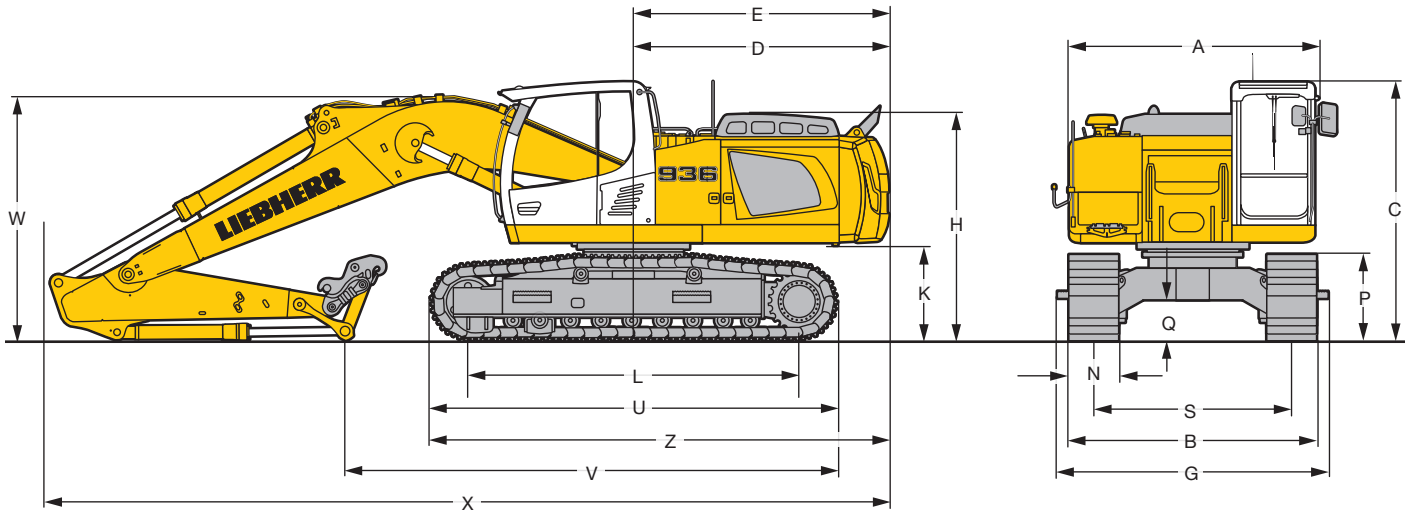
Versions	
NLC	gauge 2,390 mm
LC	gauge 2,590 mm
Drive	Liebherr swash plate motors with integrated brake valves on both sides
Transmission	Liebherr planetary reduction gears
Travel speed	low range – 3.2 km/h
	high range – 5.2 km/h
Net drawbar pull on crawler	261 kN
Track components	D7, maintenance-free
Track rollers/Carrier rollers	9/2
Tracks	sealed and greased
Track pads	triple-grouser
Digging locks	wet multi-discs (spring applied, pressure released)
Brake valves	integrated into travel motor
Lashing eyes	integrated



Attachment

Type	combination of resistant steel plates and cast steels components
Hydraulic cylinders	Liebherr cylinders with special seal-system, shock protection
Pivots	sealed, low maintenance
Lubrication	automatic central lubrication system (except link and tilt geometry)
Hydraulic connections	pipes and hoses equipped with SAE splitflange connections
Bucket	fitted as standard with Liebherr tooth system

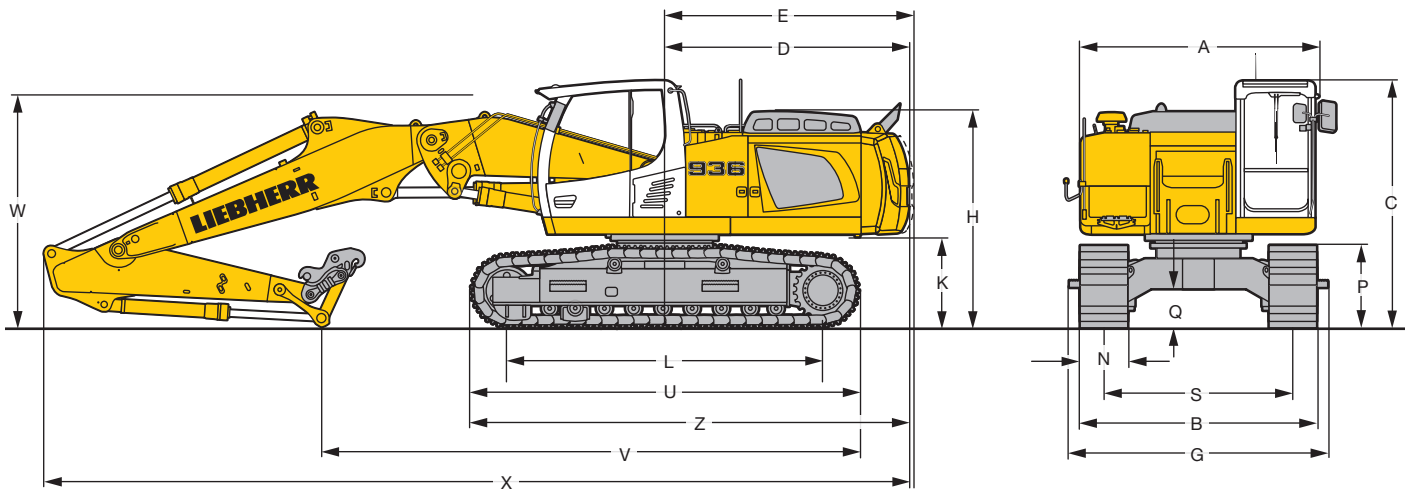
Dimensions



NLC	mm	LC	mm
A*	2,995		2,995
C	3,130		3,130
D	3,085		3,085
E	3,155		3,155
H	2,760		2,760
K	1,150		1,150
L	4,000		4,000
P	1,050		1,050
Q	495		495
U	4,920		4,920
S	2,390		2,590
N	500 600 750	500 600 750	
B	2,958 2,990 3,140	3,158 3,190 3,340	
G	2,980 2,980 3,280	3,180 3,180 3,480	
Z	5,545		5,545

	Stick Length	Mono Boom 6.05 m	Two-piece Boom 4.20 m	Straight Mono Boom 6.50 m
	m	mm	mm	mm
V	2.50	5,950	6,800	6,650
	2.80	5,650	6,550	6,400
	3.10	5,400	6,300	6,200
	3.90	4,700	5,700	5,700
W	2.50	3,050	2,850	2,950
	2.80	3,050	2,900	3,000
	3.10	3,100	3,000	3,100
	3.90	3,200	3,250	3,450
X	2.50	10,200	11,000	10,750
	2.80	10,250	11,050	10,750
	3.10	10,250	11,050	10,800
	3.90	10,300	11,000	10,750

* without door stop device and spacer



Lift Capacities

with Mono Boom 6.05 m

Stick 2.50 m

Stick m	Under- carriage	3.0 m		4.5 m		6.0 m		7.5 m		9.0 m		10.5 m		m
		LC	LC	LC	LC	LC	LC	LC	LC	LC	LC	LC	LC	
10.5	NLC													
	LC													
9.0	NLC													
	LC													
7.5	NLC												3.7*	3.7*
	LC												3.7*	3.7*
6.0	NLC					7.8	8.1*	4.9*	4.9*				3.5*	3.5*
	LC					8.1*	8.1*	4.9*	4.9*				3.5*	3.5*
4.5	NLC			11.0*	11.0*	7.5	9.1*	5.3	7.8*				3.5*	3.5*
	LC			11.0*	11.0*	8.2	9.1*	5.8	7.8*				3.5*	3.5*
3.0	NLC			10.7	13.7*	7.1	10.3*	5.1	8.5				3.7*	3.7*
	LC			11.8	13.7*	7.7	10.3*	5.6	8.5				3.7*	3.7*
1.5	NLC			10.0	15.8*	6.7	11.4*	4.9	8.3				3.9	4.0*
	LC			11.0	15.8*	7.3	11.4*	5.3	8.3				4.0*	4.0*
0	NLC	8.6*	8.6*	9.6	16.4*	6.4	11.4	4.7	8.1				4.0	4.6*
	LC	8.6*	8.6*	10.7	16.4*	7.1	11.4	5.2	8.1				4.4	4.6*
-1.5	NLC	14.0*	14.0*	9.6	15.8*	6.3	11.2	4.7	8.0				4.3	5.7*
	LC	14.0*	14.0*	10.6	15.8*	7.0	11.3	5.1	8.1				4.7	5.7*
-3.0	NLC	19.0	19.1*	9.7	14.2*	6.4	10.7*						5.1	8.0*
	LC	19.1*	19.1*	10.7	14.2*	7.0	10.7*						5.6	8.0*
-4.5	NLC	14.4*	14.4*	10.0	11.0*								7.0	8.3*
	LC	14.4*	14.4*	11.0*	11.0*								7.7	8.3*
-6.0	NLC													
	LC													

Stick 2.80 m

Stick m	Under- carriage	3.0 m		4.5 m		6.0 m		7.5 m		9.0 m		10.5 m		m
		LC	LC	LC	LC	LC	LC	LC	LC	LC	LC	LC	LC	
10.5	NLC													
	LC													
9.0	NLC													
	LC													
7.5	NLC												3.2*	3.2*
	LC												3.2*	3.2*
6.0	NLC					7.8	8.1*	4.9*	4.9*				3.1*	3.1*
	LC					8.1*	8.1*	4.9*	4.9*				3.1*	3.1*
4.5	NLC			11.0*	11.0*	7.5	9.1*	5.3	7.8*				3.1*	3.1*
	LC			11.0*	11.0*	8.2	9.1*	5.8	7.8*				3.1*	3.1*
3.0	NLC			10.7	13.7*	7.1	10.3*	5.1	8.5				3.2*	3.2*
	LC			11.8	13.7*	7.7	10.3*	5.6	8.5				3.2*	3.2*
1.5	NLC			10.0	15.8*	6.7	11.4*	4.9	8.3				3.5*	3.5*
	LC			11.0	15.8*	7.3	11.4*	5.3	8.3				3.5*	3.5*
0	NLC	8.9*	8.9*	9.6	16.3*	6.4	11.3	4.7	8.1				3.7	4.0*
	LC	8.9*	8.9*	10.6	16.3*	7.0	11.4	5.1	8.1				4.0*	4.0*
-1.5	NLC	13.3*	13.3*	9.5	16.0*	6.3	11.2	4.6	8.0				4.0	4.8*
	LC	13.3*	13.3*	10.5	16.0*	6.9	11.2	5.1	8.0				4.4	4.8*
-3.0	NLC	18.6*	18.6*	9.5	14.6*	6.3	11.0*	4.7	6.5*				4.7	6.4*
	LC	18.6*	18.6*	10.6	14.6*	6.9	11.0*	5.1	6.5*				5.1	6.4*
-4.5	NLC	15.7*	15.7*	9.8	11.7*	6.5	8.6*						6.2	8.1*
	LC	15.7*	15.7*	10.9	11.7*	7.1	8.6*						6.8	8.1*
-6.0	NLC													
	LC													

Stick 3.10 m

Stick m	Under- carriage	3.0 m		4.5 m		6.0 m		7.5 m		9.0 m		10.5 m		m
		LC	LC	LC	LC	LC	LC	LC	LC	LC	LC	LC	LC	
10.5	NLC													
	LC													
9.0	NLC													
	LC													
7.5	NLC												2.9*	2.9*
	LC												2.9*	2.9*
6.0	NLC							5.5	5.5*				2.7*	2.7*
	LC							5.5*	5.5*				2.7*	2.7*
4.5	NLC					7.6	8.2*	5.3	7.2*				2.7*	2.7*
	LC					8.2*	8.2*	5.8	7.2*				2.7*	2.7*
3.0	NLC	18.6*	18.6*	10.9	12.5*	7.1	9.6*	5.1	8.1*	3.8	4.3*		2.8*	2.8*
	LC	18.6*	18.6*	12.0	12.5*	7.8	9.6*	5.5	8.1*	4.1	4.3*		2.8*	2.8*
1.5	NLC	7.3*	7.3*	10.0	14.9*	6.7	10.8*	4.8	8.2	3.7	5.0*		3.1*	3.1*
	LC	7.3*	7.3*	11.1	14.9*	7.3	10.8*	5.3	8.3	4.0	5.0*		3.1*	3.1*
0	NLC	9.1*	9.1*	9.5	16.1*	6.4	11.3	4.6	8.0	3.6	4.3*		3.4*	3.4*
	LC	9.1*	9.1*	10.6	16.1*	7.0	11.3	5.1	8.0	3.9	4.3*		3.4*	3.4*
-1.5	NLC	12.7*	12.7*	9.4	16.0*	6.2	11.1	4.6	7.9				3.8	4.1*
	LC	12.7*	12.7*	10.4	16.0*	6.8	11.1	5.0	7.9				4.1*	4.1*
-3.0	NLC	17.4*	17.4*	9.4	14.9*	6.2	11.1	4.6	7.9				4.3	5.3*
	LC	17.4*	17.4*	10.5	14.9*	6.8	11.1*	5.0	8.0				4.7	5.3*
-4.5	NLC	16.9*	16.9*	9.6	12.4*	6.4	9.2*						5.6	7.9*
	LC	16.9*	16.9*	10.7	12.4*	7.0	9.2*						6.1	7.9*
-6.0	NLC													
	LC													

Stick 3.90 m

Stick m	Under- carriage	3.0 m		4.5 m		6.0 m		7.5 m		9.0 m		10.5 m		m
		LC	LC	LC	LC	LC	LC	LC	LC	LC	LC	LC	LC	
10.5	NLC													
	LC													
9.0	NLC												2.3*	2.3*
	LC												2.3*	2.3*
7.5	NLC												2.1*	2.1*
	LC												2.1*	2.1*
6.0	NLC							5.0*	5.0*	2.9*	2.9*		2.0*	2.0*
	LC							5.0*	5.0*	2.9*	2.9*		2.0*	2.0*
4.5	NLC							5.4	6.0*	4.0	4.3*		2.0*	2.0*
	LC							5.9	6.0*	4.3*	4.3*		2.0*	2.0*
3.0	NLC					10.7*	10.7*	7.3	8.6*	5.2	7.4*	3.8	5.3*	2.0*
	LC					10.7*	10.7*	8.0	8.6*	5.6	7.4*	4.2	5.3*	2.0*
1.5	NLC	12.0*	12.0*	10.4	13.6*	6.8	10.0*	4.9	8.2*	3.7	6.2*		2.2*	2.2*
	LC	12.0*	12.0*	11.5	13.6*	7.5	10.0*	5.4	8.2*	4.0	6.2*		2.2*	2.2*
0	NLC	9.8*	9.8*	9.7	15.5*	6.4	11.2*	4.7	8.0	3.6	6.1		2.4*	2.4*
	LC	9.8*	9.8*	10.8	15.5*	7.1	11.2*	5.1	8.1	3.9	6.1		2.4*	2.4*
-1.5	NLC	11.6*	11.6*	9.4	16.1*	6.2	11.1	4.5	7.9	3.5	5.8*		2.8*	2.8*
	LC	11.6*	11.6*	10.4	16.1*	6.8	11.1	5.0	7.9	3.8	5.8*		2.8*	2.8*
-3.0	NLC	14.8*	14.8*	9.3	15.6*	6.1	11.0	4.5	7.8				3.5*	3.5*
	LC	14.8*	14.8*	10.3	15.6*	6.7	11.0	4.9	7.8				3.5*	3.5*
-4.5	NLC	18.6	19.4*	9.4	13.9*	6.2	10.4*	4.5	7.4*				4.4	4.8*
	LC	19.4*	19.4*	10.5	13.9*	6.8	10.4*	5.0	7.4*				4.8	4.8*
-6.0	NLC	14.5*	14.5*	9.7	10.5*	6.4	7.4*						6.3	7.1*
	LC	14.5*	14.5*	10.5*	10.5*	7.1	7.4*						6.9	7.1*

Height Can be slewed through 360° In longitudinal position of undercarriage Max. reach * Limited by hydr. capacity

The lift capacities on the load hook of the Liebherr quick coupler 66 without attachment are stated in metric tonnes (t), and can be lifted 360° on firm, level supporting surface. Adjacent values are valid for the undercarriage when in the longitudinal position. Capacities are valid for 600 mm wide triple-grouser pads. Indicated loads are based on ISO 10567 standard and do not exceed 75 % of tipping or 87 % of hydraulic capacity (indicated by *) or are limited through the allowed lift capacity of the load hook on the quick coupler (12 t). Without quick coupler the lift capacities will increase by 350 kg, without bucket cylinder, link and lever they increase by an additional 400 kg. Lifting capacity of the excavator is limited by machine stability and hydraulic capacity.

According to European Standard, EN 474-5: In the European Union excavators have to be equipped with an overload warning device, a load diagram and automatic check valves on the hoist cylinders, when they are used for lifting operations which require the use of lifting accessories.

Lift Capacities

with Two-piece Boom 4.20 m

Stick 2.50 m

m	Under-carriage	3.0 m		4.5 m		6.0 m		7.5 m		9.0 m		10.5 m		m
		LC	NLC	LC	NLC	LC	NLC	LC	NLC	LC	NLC	LC	NLC	
10.5	NLC LC												4.8* 4.8*	4.1
9.0	NLC LC					5.3* 5.3*	5.3*						3.9* 3.9*	6.4
7.5	NLC LC			8.5* 8.5*	8.5*	7.9* 7.9*	7.9*	4.8* 4.8*	4.8*				3.6* 3.6*	7.7
6.0	NLC LC	12.0* 12.0*	12.0*	11.3* 11.3*	11.3*	8.1* 8.1*	10.1*	5.5* 5.5*	7.9*				3.5* 3.5*	8.6
4.5	NLC LC	21.2* 21.2*	21.2*	11.9* 11.9*	14.4*	8.0* 8.0*	10.8*	5.5* 5.5*	8.6*	3.7* 4.1*	4.9*		3.5* 3.5*	9.2
3.0	NLC LC	19.5* 19.5*	19.5*	11.5* 12.4*	15.6*	7.8* 8.4*	11.4*	5.4* 5.8*	8.5*	3.6* 4.0*	6.2*		3.2* 3.6*	9.5
1.5	NLC LC	20.7* 20.8*	20.8*	11.4* 12.3*	15.6*	7.6* 8.3*	11.4*	5.1* 5.6*	8.5*	3.5* 3.9*	6.1*		3.1* 3.4*	9.5
0	NLC LC	20.0* 22.8*	23.3*	10.7* 11.8*	15.6*	7.1* 7.8*	11.4*	4.8* 5.3*	8.3*	3.4* 3.7*	6.0*		3.1* 3.5*	9.3
-1.5	NLC LC	19.3* 22.1*	25.0*	10.1* 11.3*	15.9*	6.7* 7.4*	11.6*	4.5* 5.0*	8.0*				3.3* 3.7*	8.9
-3.0	NLC LC	19.2* 21.9*	25.1*	9.9* 11.0*	16.2*	6.2* 6.9*	11.2*	4.3* 4.8*	6.8*				3.8* 4.3*	8.1
-4.5	NLC LC	19.3* 21.4*	21.4*	9.6* 10.7*	12.6*	6.1* 6.7*							4.8* 4.8*	6.5
-6.0	NLC LC													

Stick 2.80 m

m	Under-carriage	3.0 m		4.5 m		6.0 m		7.5 m		9.0 m		10.5 m		m	
		LC	NLC	LC	NLC	LC	NLC	LC	NLC	LC	NLC	LC	NLC		
10.5	NLC LC												4.1* 4.1*	4.7	
9.0	NLC LC							5.7* 5.7*	5.7*					3.4* 3.4*	6.8
7.5	NLC LC							7.3* 7.3*	7.3*	5.3* 5.3*				3.2* 3.2*	8.1
6.0	NLC LC					9.5* 9.5*	9.5*	8.1* 8.6*	8.9*	5.6* 6.0*	7.4*			3.1* 3.1*	9.0
4.5	NLC LC	21.6* 21.9*	21.9*	11.9* 12.8*	14.0*	7.9* 8.5*	10.6*	5.5* 6.0*	8.6*	3.8* 4.1*	5.7*		3.1* 3.1*	9.5	
3.0	NLC LC	19.6* 19.6*	19.6*	11.5* 12.3*	15.4*	7.8* 8.3*	11.2*	5.4* 5.9*	8.5*	3.7* 4.0*	6.3*		3.0* 3.2*	9.8	
1.5	NLC LC	20.4* 20.4*	20.4*	11.3* 12.2*	15.5*	7.6* 8.3*	11.3*	5.2* 5.7*	8.4*	3.5* 3.9*	6.1*		2.9* 3.2*	9.8	
0	NLC LC	20.2* 22.6*	22.6*	10.8* 11.9*	15.5*	7.1* 7.8*	11.3*	4.9* 5.4*	8.3*	3.4* 3.6*	6.0*		2.9* 3.3*	9.6	
-1.5	NLC LC	19.3* 22.1*	24.7*	10.1* 11.3*	15.7*	6.7* 7.4*	11.5*	4.5* 5.0*	8.0*	3.2* 3.6*	5.7*		3.1* 3.5*	9.2	
-3.0	NLC LC	19.0* 21.8*	25.1*	9.9* 11.0*	16.2*	6.3* 6.9*	11.4*	4.3* 4.8*	7.6*				3.5* 3.9*	8.5	
-4.5	NLC LC	19.2* 21.4*	23.0*	9.5* 10.6*	13.8*	6.0* 6.7*	8.2*						4.2* 4.2*	7.0	
-6.0	NLC LC														

Stick 3.10 m

m	Under-carriage	3.0 m		4.5 m		6.0 m		7.5 m		9.0 m		10.5 m		m
		LC	NLC	LC	NLC	LC	NLC	LC	NLC	LC	NLC	LC	NLC	
10.5	NLC LC												3.6* 3.6*	5.3
9.0	NLC LC					5.6* 5.6*	5.6*						3.0* 3.0*	7.2
7.5	NLC LC					6.7* 6.7*	6.7*	5.4* 5.4*					2.8* 2.8*	8.4
6.0	NLC LC			8.1* 8.1*	8.1*	7.9* 7.9*	7.9*	5.6* 6.0*	6.9* 6.9*	3.8* 3.9*	3.9*		2.7* 2.7*	9.3
4.5	NLC LC	20.7* 20.7*	20.7*	11.9* 12.8*	13.6*	7.9* 8.5*	10.4*	5.6* 6.0*	8.5* 8.5*	3.8* 4.2*	5.9*		2.7* 2.7*	9.8
3.0	NLC LC	19.8* 19.8*	19.8*	11.5* 12.3*	15.1*	7.7* 8.3*	11.0*	5.5* 5.9*	8.4* 8.4*	3.7* 4.1*	6.3*		2.8* 2.8*	10.1
1.5	NLC LC	20.1* 20.1*	20.1*	11.3* 12.1*	15.4*	7.7* 8.2*	11.2*	5.3* 5.7*	8.3* 8.4*	3.6* 3.9*	6.1*		2.7* 3.0*	10.1
0	NLC LC	20.4* 22.0*	22.0*	10.8* 12.0*	15.4*	7.1* 7.8*	11.2*	4.9* 5.4*	8.4* 8.4*	3.4* 3.8*	6.0*		2.8* 3.1*	9.9
-1.5	NLC LC	19.3* 22.1*	24.2*	10.1* 11.3*	15.5*	6.7* 7.4*	11.3*	4.6* 5.1*	8.0* 8.1*	3.2* 3.6*	5.8*		2.9* 3.3*	9.5
-3.0	NLC LC	18.9* 21.6*	25.0*	9.8* 10.9*	16.0*	6.3* 7.0*	11.5*	4.3* 4.8*	7.8* 7.8*				3.3* 3.7*	8.8
-4.5	NLC LC	19.1* 21.8*	23.8*	9.5* 10.6*	14.7*	6.0* 6.7*	9.3*	4.0* 4.0*					3.8* 3.8*	7.5
-6.0	NLC LC												9.3* 9.3*	3.8

Stick 3.90 m

m	Under-carriage	3.0 m		4.5 m		6.0 m		7.5 m		9.0 m		10.5 m		m	
		LC	NLC	LC	NLC	LC	NLC	LC	NLC	LC	NLC	LC	NLC		
10.5	NLC LC							3.9* 3.9*	3.9*					2.5* 2.5*	6.7
9.0	NLC LC									3.9* 3.9*				2.2* 2.2*	8.3
7.5	NLC LC							5.2* 5.2*	5.2*	4.9* 4.9*	3.2* 3.2*			2.0* 2.0*	9.4
6.0	NLC LC							5.8* 5.8*	5.8*	5.6* 5.6*	4.0* 4.3*	4.5*		2.0* 2.0*	10.1
4.5	NLC LC			8.3* 8.3*	8.3*	7.7* 7.7*	7.7*	6.1* 6.1*	6.9* 6.9*	4.3* 4.3*	5.6* 5.6*	2.5* 2.5*		2.0* 2.0*	10.6
3.0	NLC LC	21.0* 21.1*	21.1*	11.6* 12.5*	14.2*	7.7* 8.3*	10.6*	5.7* 6.1*	8.4* 8.5*	3.9* 4.3*	6.3* 6.4*	2.7* 3.0*		2.0* 2.0*	10.9
1.5	NLC LC	19.8* 19.7*	19.8*	11.2* 12.1*	15.3*	7.6* 8.1*	11.1*	5.5* 5.9*	8.3* 8.3*	3.8* 4.1*	6.3* 6.3*	2.6* 2.9*		2.2* 2.2*	10.9
0	NLC LC	20.4* 20.8*	20.8*	11.2* 12.0*	15.3*	7.3* 8.0*	11.1*	5.2* 5.7*	8.2* 8.3*	3.6* 3.9*	6.1* 6.1*	2.5* 2.8*		2.4* 2.4*	10.7
-1.5	NLC LC	19.9* 22.5*	22.9*	10.4* 11.5*	15.3*	6.8* 7.5*	11.1*	4.8* 5.3*	8.2* 8.2*	3.3* 3.7*	5.9* 5.9*		2.5* 2.7*	10.4	
-3.0	NLC LC	19.0* 21.8*	24.6*	9.9* 11.0*	15.6*	6.5* 7.2*	11.4*	4.4* 4.9*	7.9* 7.9*	3.2* 3.5*	5.7* 5.8*		2.8* 3.1*	9.7	
-4.5	NLC LC	18.9* 21.6*	24.8*	9.7* 10.8*	16.0*	6.1* 6.8*	11.1*	4.2* 4.7*	7.2* 7.2*				3.2* 3.2*	8.8	
-6.0	NLC LC	18.9* 20.5*	20.5*	9.4* 10.5*	12.1*	5.9* 6.6*	6.8*						4.4* 4.4*	6.7	

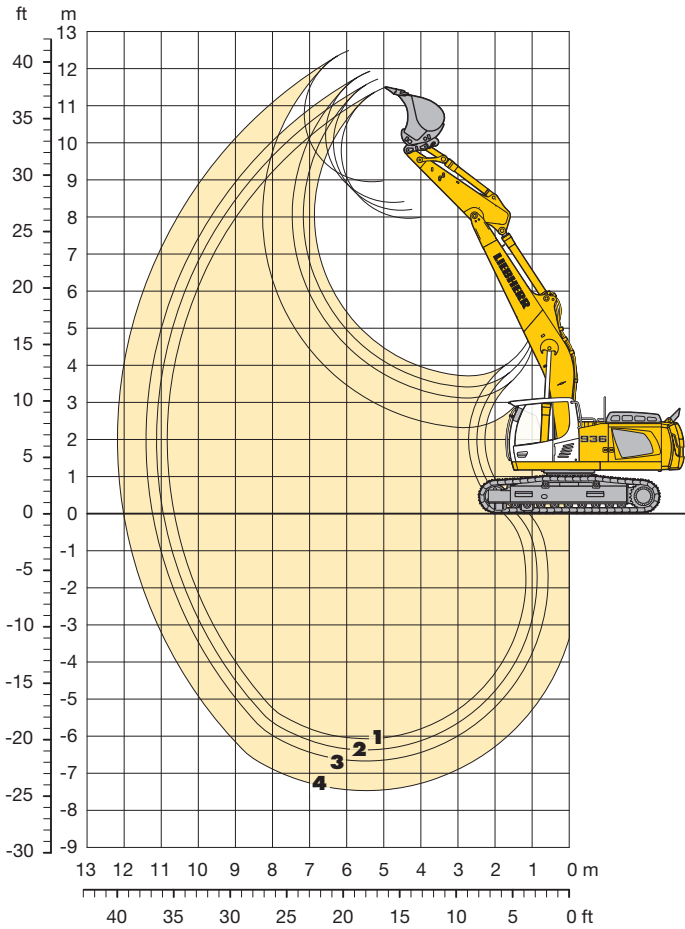
Height Can be slewed through 360° In longitudinal position of undercarriage Max. reach * Limited by hydr. capacity

The lift capacities on the load hook of the Liebherr quick coupler 66 without attachment are stated in metric tonnes (t), and can be lifted 360° on firm, level supporting surface. Adjacent values are valid for the undercarriage when in the longitudinal position. Capacities are valid for 600 mm wide triple-grouser pads with adjusting cylinder in optimal position. Indicated loads are based on ISO 10567 standard and do not exceed 75 % of tipping or 87 % of hydraulic capacity (indicated by *) or are limited through the allowed lift capacity of the load hook on the quick coupler (12 t). Without quick coupler the lift capacities will increase by 350 kg, without bucket cylinder, link and lever they increase by an additional 400 kg. Lifting capacity of the excavator is limited by machine stability and hydraulic capacity.

According to European Standard, EN 474-5: In the European Union excavators have to be equipped with an overload warning device, a load diagram and automatic check valves on the hoist cylinders, when they are used for lifting operations which require the use of lifting accessories.

Backhoe Bucket

with Straight Mono Boom 6.50 m



Digging Envelope with Quick Coupler

		1	2	3	4
Stick length	m	2.50	2.80	3.10	3.90
Max. digging depth	m	6.05	6.35	6.65	7.45
Max. reach at ground level	m	10.65	10.95	11.25	12.00
Max. dump height	m	7.95	8.15	8.40	8.95
Max. teeth height	m	11.50	11.70	11.90	12.50

Digging Forces with Quick Coupler

		1	2	3	4
Digging force ISO	kN	143	133	125	107
	t	14.5	13.5	12.7	10.9
Breakout force ISO	kN	166	166	166	166
	t	16.9	16.9	16.9	16.9

without Quick Coupler

Digging force ISO	kN	152	141	131	111
	t	15.5	14.4	13.4	11.3
Breakout force ISO	kN	193	193	193	193
	t	19.7	19.7	19.7	19.7

Max. breakout force with ripper bucket 255 kN (26.0 t)

Operating Weight and Ground Pressure

Operating weight includes basic machine with straight mono boom 6.50 m, stick 2.50 m, quick coupler 66 and bucket 1.00 m³ (960 kg).

Undercarriage		NLC			LC		
Pad width	mm	500	600	750	500	600	750
Weight	kg	30,650	31,000	31,950	30,750	31,100	32,050
Ground pressure	kg/cm ²	0.71	0.60	0.49	0.71	0.60	0.49

Optional: heavy counterweight
(heavy counterweight increases the operating weight by 900 kg and ground pressure by 0.02 kg/cm²)

Buckets Machine stability per ISO 10567* (75% of tipping capacity)

	Cutting width mm	Capacity ISO 7451 m ³	Weight ³⁾ kg	Weight ⁴⁾ kg	NLC-Undercarriage								LC-Undercarriage							
					Stick length (m)				Stick length (m)				Stick length (m)				Stick length (m)			
					2.50	2.80	3.10	3.90	2.50	2.80	3.10	3.90	2.50	2.80	3.10	3.90	2.50	2.80	3.10	3.90
STD ¹⁾	1,050	1.00	940	960	□	□	□	△	□	□	□	△	□	□	□	□	□	□	△	
	1,250	1.25	1,070	1,090	□	□	□	△	□	□	□	■	□	□	□	△	□	□	□	■
	1,400	1.45	1,140	1,160	□	□	△	■	□	□	□	△	△	□	□	□	△	□	△	▲
	1,550	1.60	1,210	1,230	□	△	△	▲	△	△	■	▲	□	△	△	▲	□	△	■	▲
	1,650	1.75	1,280	1,300	△	△	■	▲	△	■	▲	▲	□	△	■	▲	△	■	▲	▲
HD ²⁾	1,050	1.00	1,100	1,120	□	□	□	△	□	□	□	■	□	□	□	△	□	□	□	■
	1,250	1.25	1,250	1,270	□	□	□	△	□	□	△	▲	□	□	□	■	□	□	△	▲
	1,400	1.45	1,340	1,360	□	□	□	△	□	□	△	■	▲	□	□	△	▲	□	■	▲
	1,550	1.60	1,430	1,450	△	△	■	▲	△	■	■	▲	▲	□	△	■	▲	□	■	▲
	1,650	1.75	1,500	1,520	△	■	▲	▲	■	■	▲	▲	▲	△	■	▲	▲	△	■	▲

* Indicated loads are based on ISO 10567 max. stick length, lifted 360° on firm

- 1) Standard bucket with teeth Z 50
- 2) HD bucket with teeth Z 50
- 3) Bucket for direct fitting
- 4) Bucket for fitting to quick coupler

Other backhoes available on request

Max. material weight □ = ≤ 1.8 t/m³, △ = ≤ 1.5 t/m³, ■ = ≤ 1.2 t/m³, ▲ = not authorized

Lift Capacities

with Straight Mono Boom 6.50 m

Stick 2.50 m

m	Under-carriage	3.0 m		4.5 m		6.0 m		7.5 m		9.0 m		10.5 m		m
		LC	LC	LC	LC	LC	LC	LC	LC	LC	LC	LC	LC	
10.5	NLC													
9.0	NLC					4.3*	4.3*						4.1*	4.1*
	LC					4.3*	4.3*						4.1*	4.1*
7.5	NLC					7.7*	7.7*						3.7*	3.7*
	LC					7.7*	7.7*						3.7*	3.7*
6.0	NLC					7.7	9.1*	5.3	7.3*				3.5*	3.5*
	LC					8.3	9.1*	5.8	7.3*				3.5*	3.5*
4.5	NLC	19.9*	19.9*	11.2	12.8*	7.3	10.0*	5.2	8.5*				3.5*	3.5*
	LC	19.9*	19.9*	12.3	12.8*	7.9	10.0*	5.6	8.5*				3.5*	3.5*
3.0	NLC			10.2	15.1*	6.8	11.0*	4.9	8.3	3.7	5.8*		3.6	3.6*
	LC			11.3	15.1*	7.5	11.0*	5.4	8.4	4.1	5.8*		3.6*	3.6*
1.5	NLC			9.5	15.9*	6.4	11.4	4.7	8.1	3.6	6.2		3.5	3.9*
	LC			10.6	15.9*	7.1	11.4	5.2	8.1	4.0	6.2		3.8	3.9*
0	NLC			9.3	15.8*	6.2	11.1	4.6	7.9	3.6	5.6*		3.5	4.3*
	LC			10.4	15.8*	6.8	11.1	5.0	8.0	3.9	5.6*		3.9	4.3*
-1.5	NLC	10.5*	10.5*	9.3	14.4*	6.1	11.0	4.5	7.9				3.8	5.1*
	LC	10.5*	10.5*	10.4	14.4*	6.8	11.1	5.0	7.9				4.2	5.1*
-3.0	NLC	14.4*	14.4*	9.5	12.2*	6.2	9.7*	4.6	7.3*				4.4	6.5*
	LC	14.4*	14.4*	10.5	12.2*	6.9	9.7*	5.1	7.3*				4.8	6.5*
-4.5	NLC			8.7*	8.7*	6.5	6.8*						5.6*	5.6*
	LC			8.7*	8.7*	6.8*	6.8*						5.6*	5.6*
-6.0	NLC													
	LC													

Stick 2.80 m





m	Under-carriage	3.0 m		4.5 m		6.0 m		7.5 m		9.0 m		10.5 m		m
		LC	LC	LC	LC	LC	LC	LC	LC	LC	LC	LC	LC	
10.5	NLC													
9.0	NLC					5.3*	5.3*						3.6*	3.6*
	LC					5.3*	5.3*						3.6*	3.6*
7.5	NLC					7.1*	7.1*	4.7*	4.7*				3.2*	3.2*
	LC					7.1*	7.1*	4.7*	4.7*				3.2*	3.2*
6.0	NLC					7.7	8.4*	5.4	7.0*				3.1*	3.1*
	LC					8.4	8.4*	5.8	7.0*				3.1*	3.1*
4.5	NLC	18.3*	18.3*	11.4	12.2*	7.3	9.7*	5.2	8.2*	3.8	4.7*		3.1*	3.1*
	LC	18.3*	18.3*	12.2*	12.2*	8.0	9.7*	5.6	8.2*	4.2	4.7*		3.1*	3.1*
3.0	NLC			10.3	14.6*	6.8	10.7*	4.9	8.3	3.7	6.3		3.2*	3.2*
	LC			11.4	14.6*	7.5	10.7*	5.4	8.3	4.1	6.3		3.2*	3.2*
1.5	NLC			9.5	16.0*	6.4	11.4	4.7	8.1	3.6	6.1		3.3	3.4*
	LC			10.6	16.0*	7.1	11.4	5.2	8.1	4.0	6.2		3.4*	3.4*
0	NLC	5.2*	5.2*	9.2	15.9*	6.2	11.1	4.5	7.9	3.5	6.1		3.3	3.7*
	LC	5.2*	5.2*	10.3	15.9*	6.8	11.1	5.0	7.9	3.9	6.1		3.6	3.7*
-1.5	NLC	10.0*	10.0*	9.2	14.8*	6.1	10.9	4.5	7.8				3.5	4.3*
	LC	10.0*	10.0*	10.2	14.8*	6.7	11.0	4.9	7.8				3.9	4.3*
-3.0	NLC	15.1*	15.1*	9.3	12.7*	6.1	9.9*	4.5	7.6*				4.0	5.4*
	LC	15.1*	15.1*	10.4	12.7*	6.7	9.9*	5.0	7.6*				4.4	5.4*
-4.5	NLC			9.5*	9.5*	6.3	7.4*						5.1	5.6*
	LC			9.5*	9.5*	7.0	7.4*						5.6*	5.6*
-6.0	NLC													
	LC													

Stick 3.10 m

m	Under-carriage	3.0 m		4.5 m		6.0 m		7.5 m		9.0 m		10.5 m		m
		LC	LC	LC	LC	LC	LC	LC	LC	LC	LC	LC		
10.5	NLC													
9.0	NLC												3.2*	3.2*
	LC												3.2*	3.2*
7.5	NLC							5.1*	5.1*				2.9*	2.9*
	LC							5.1*	5.1*				2.9*	2.9*
6.0	NLC					7.5*	7.5*	5.4	6.6*	3.0*	3.0*		2.7*	2.7*
	LC					7.5*	7.5*	5.8	6.6*	3.0*	3.0*		2.7*	2.7*
4.5	NLC			11.5	11.6*	7.3	9.3*	5.2	8.0*	3.8	5.3*		2.7*	2.7*
	LC			11.6*	11.6*	8.0	9.3*	5.6	8.0*	4.2	5.3*		2.7*	2.7*
3.0	NLC			10.4	14.1*	6.8	10.4*	4.9	8.3	3.7	6.2		2.8*	2.8*
	LC			11.5	14.1*	7.5	10.4*	5.4	8.3	4.0	6.3		2.8*	2.8*
1.5	NLC			9.6	15.7*	6.4	11.4	4.7	8.0	3.6	6.1		3.0*	3.0*
	LC			10.6	15.7*	7.1	11.4*	5.1	8.1	3.9	6.1		3.0*	3.0*
0	NLC	5.8*	5.8*	9.2	16.0*	6.1	11.0	4.5	7.8	3.5	6.0		3.1	3.2*
	LC	5.8*	5.8*	10.2	16.0*	6.8	11.1	4.9	7.9	3.8	6.0		3.2*	3.2*
-1.5	NLC	9.6*	9.6*	9.1	15.0*	6.0	10.9	4.4	7.7	3.4	6.0		3.3	3.7*
	LC	9.6*	9.6*	10.1	15.0*	6.6	10.9	4.9	7.8	3.8	6.0		3.7	3.7*
-3.0	NLC	14.1*	14.1*	9.2	13.2*	6.0	10.2*	4.4	7.8				3.8	4.6*
	LC	14.1*	14.1*	10.2	13.2*	6.6	10.2*	4.9	7.8				4.1	4.6*
-4.5	NLC			9.4	10.2*	6.2	8.0*						4.7	5.5*
	LC			10.2*	10.2*	6.8	8.0*						5.1	5.5*
-6.0	NLC													
	LC													

Stick 3.90 m

m	Under-carriage	3.0 m		4.5 m		6.0 m		7.5 m		9.0 m		10.5 m		m
		LC	LC	LC	LC	LC	LC	LC	LC	LC	LC	LC		
10.5	NLC												2.7*	2.7*
9.0	NLC												2.7*	2.7*
	LC												2.3*	2.3*
7.5	NLC							3.7*	3.7*				2.3*	2.3*
	LC							3.7*	3.7*				2.3*	2.3*
6.0	NLC							4.8*	4.8*	2.7*	2.7*		2.1*	2.1*
	LC							4.8*	4.8*	2.7*	2.7*		2.1*	2.1*
4.5	NLC							5.4*	5.4*	4.0	4.3*		2.0*	2.0*
	LC							5.4*	5.4*	4.3*	4.3*		2.0*	2.0*
3.0	NLC	19.9*	19.9*	10.9	12.6*	6.9*	6.9*	5.3	6.4*	3.9	5.3*		2.0*	2.0*
	LC	19.9*	19.9*	12.0	12.6*	7.7	9.6*	5.5	8.0*	4.1	6.3		2.0*	2.0*
1.5	NLC	6.1*	6.1*	9.9	14.9*	6.6	10.8*	4.7	8.1	3.6	6.1		2.1*	2.1*
	LC	6.1*	6.1*	11.0	14.9*	7.2	10.8*	5.2	8.1	3.9	6.1		2.1*	2.1*
0	NLC	6.5*	6.5*	9.3	15.9*	6.2	11.1	4.5	7.9	3.4	6.0		2.5*	2.5*
	LC	6.5*	6.5*	10.4	15.9*	6.8	11.1	5.0	7.9	3.8	6.0		2.5*	2.5*
-1.5	NLC	8.8*	8.8*	9.0	15.7*	6.0	10.8	4.4	7.7	3.4	5.9		2.6*	2.6*
	LC	8.8*	8.8*	10.1	15.7*	6.6	10.9	4.8	7.7	3.7	5.9		2.6*	2.6*
-3.0	NLC	11.9*	11.9*	9.0	14.4*	5.9	10.8	4.3	7.6	3.4	5.9		3.1*	3.1*
	LC	11.9*	11.9*	10.1	14.4*	6.5	10.8	4.8	7.7	3.7	5.9		3.1*	3.1*
-4.5	NLC	16.1*	16.1*	9.2	12.1*	6.0	9.3*	4.4	7.0*				3.7	4.0*
	LC	16.1*	16.1*	10.2	12.1*	6.6	9.3*	4.8	7.0*				4.0*	4.0*
-6.0	NLC			8.3*	8.3*	6.2	6.2*						5.1*	5.1*
	LC			8.3*	8.3*	6.2*	6.2*						5.1*	5.1*

 Height
  Can be slewed through 360°
  In longitudinal position of undercarriage
  Max. reach
 * Limited by hydr. capacity

The lift capacities on the load hook of the Liebherr quick coupler 66 without attachment are stated in metric tonnes (t), and can be lifted 360° on firm, level supporting surface. Adjacent values are valid for the undercarriage when in the longitudinal position. Capacities are valid for 600 mm wide triple-grouser pads. Indicated loads are based on ISO 10567 standard and do not exceed 75 % of tipping or 87

Lift Capacities

with Mono Boom 6.05 m and Heavy Counterweight

Stick 2.50 m

Stick m	Under- carriage	3.0 m		4.5 m		6.0 m		7.5 m		9.0 m		10.5 m		m
		↕	↔	↕	↔	↕	↔	↕	↔	↕	↔	↕	↔	
10.5	NLC													
	LC													
9.0	NLC													
	LC													
7.5	NLC												3.7*	3.7*
	LC												3.7*	3.7*
6.0	NLC					8.1*	8.1*	4.9*	4.9*				3.5*	3.5*
	LC					8.1*	8.1*	4.9*	4.9*				3.5*	3.5*
4.5	NLC			11.0*	11.0*	8.1	9.1*	5.7	7.8*				3.5*	3.5*
	LC			11.0*	11.0*	8.8	9.1*	6.2	7.8*				3.5*	3.5*
3.0	NLC			11.6	13.7*	7.6	10.3*	5.5	8.6*				3.7*	3.7*
	LC			12.7	13.7*	8.3	10.3*	6.0	8.6*				3.7*	3.7*
1.5	NLC			10.8	15.8*	7.3	11.4*	5.3	8.9				4.0*	4.0*
	LC			11.9	15.8*	7.9	11.4*	5.8	8.9				4.0*	4.0*
0	NLC	8.6*	8.6*	10.5	16.4*	7.0	12.0*	5.2	8.7				4.4	4.6*
	LC	8.6*	8.6*	11.6	16.4*	7.7	12.0*	5.7	8.7				4.6*	4.6*
-1.5	NLC	14.0*	14.0*	10.4	15.8*	6.9	11.8*	5.1	8.6				4.7	5.7*
	LC	14.0*	14.0*	11.5	15.8*	7.6	11.8*	5.6	8.7				5.1	5.7*
-3.0	NLC	19.1*	19.1*	10.5	14.2*	7.0	10.7*						5.5	8.0*
	LC	19.1*	19.1*	11.6	14.2*	7.6	10.7*						6.0	8.0*
-4.5	NLC	14.4*	14.4*	10.8	11.0*								7.6	8.3*
	LC	14.4*	14.4*	11.0*	11.0*								8.3*	8.3*
-6.0	NLC													
	LC													

Stick 2.80 m

Stick m	Under- carriage	3.0 m		4.5 m		6.0 m		7.5 m		9.0 m		10.5 m		m	
		↕	↔	↕	↔	↕	↔	↕	↔	↕	↔	↕	↔		
10.5	NLC														
	LC														
9.0	NLC														
	LC														
7.5	NLC												3.2*	3.2*	
	LC												3.2*	3.2*	
6.0	NLC								5.4*	5.4*			3.1*	3.1*	
	LC								5.4*	5.4*			3.1*	3.1*	
4.5	NLC							8.1	8.7*	5.7	7.6*			3.1*	3.1*
	LC							8.7*	8.7*	6.2	7.6*			3.1*	3.1*
3.0	NLC	11.1*	11.1*	11.7	13.1*	7.7	9.9*	5.5	8.4*					3.2*	3.2*
	LC	11.1*	11.1*	12.8	13.1*	8.4	9.9*	6.0	8.4*					3.2*	3.2*
1.5	NLC	5.5*	5.5*	10.9	15.4*	7.3	11.1*	5.3	8.8			3.7*	3.7*	3.5*	3.5*
	LC	5.5*	5.5*	12.0	15.4*	7.9	11.1*	5.8	8.9	3.7*	3.7*			3.5*	3.5*
0	NLC	8.9*	8.9*	10.4	16.3*	7.0	11.8*	5.1	8.6					4.0*	4.0*
	LC	8.9*	8.9*	11.5	16.3*	7.6	11.8*	5.6	8.7					4.0*	4.0*
-1.5	NLC	13.3*	13.3*	10.3	16.0*	6.8	11.8*	5.1	8.6					4.4	4.8*
	LC	13.3*	13.3*	11.4	16.0*	7.5	11.8*	5.5	8.6					4.8*	4.8*
-3.0	NLC	18.6*	18.6*	10.4	14.6*	6.9	11.0*	5.1	6.5*					5.1	6.4*
	LC	18.6*	18.6*	11.5	14.6*	7.5	11.0*	5.6	6.5*					5.6	6.4*
-4.5	NLC	15.7*	15.7*	10.6	11.7*	7.1	8.6*							6.8	8.1*
	LC	15.7*	15.7*	11.7*	11.7*	7.8	8.6*							7.4	8.1*
-6.0	NLC														
	LC														

Stick 3.10 m

Stick m	Under- carriage	3.0 m		4.5 m		6.0 m		7.5 m		9.0 m		10.5 m		m
		↕	↔	↕	↔	↕	↔	↕	↔	↕	↔	↕	↔	
10.5	NLC													
	LC													
9.0	NLC													
	LC													
7.5	NLC												2.9*	2.9*
	LC												2.9*	2.9*
6.0	NLC							5.5*	5.5*				2.7*	2.7*
	LC							5.5*	5.5*				2.7*	2.7*
4.5	NLC					8.2	8.2*	5.8	7.2*				2.7*	2.7*
	LC					8.2*	8.2*	6.2	7.2*				2.7*	2.7*
3.0	NLC	18.6*	18.6*	11.8	12.5*	7.7	9.6*	5.5	8.1*	4.1	4.3*		2.8*	2.8*
	LC	18.6*	18.6*	12.5*	12.5*	8.4	9.6*	6.0	8.1*	4.3*	4.3*		2.8*	2.8*
1.5	NLC	7.3*	7.3*	10.9	14.9*	7.3	10.8*	5.3	8.7*	4.0	5.0*		3.1*	3.1*
	LC	7.3*	7.3*	12.0	14.9*	7.9	10.8*	5.8	8.7*	4.4	5.0*		3.1*	3.1*
0	NLC	9.1*	9.1*	10.4	16.1*	6.9	11.6*	5.1	8.6	3.9	4.3*		3.4*	3.4*
	LC	9.1*	9.1*	11.5	16.1*	7.6	11.6*	5.6	8.6	4.3*	4.3*		3.4*	3.4*
-1.5	NLC	12.7*	12.7*	10.2	16.0*	6.8	11.8*	5.0	8.5				4.1*	4.1*
	LC	12.7*	12.7*	11.3	16.0*	7.4	11.8*	5.5	8.5				4.1*	4.1*
-3.0	NLC	17.4*	17.4*	10.3	14.9*	6.8	11.1*	5.0	8.5*				4.7	5.3*
	LC	17.4*	17.4*	11.4	14.9*	7.4	11.1*	5.5	8.5*				5.2	5.3*
-4.5	NLC	16.9*	16.9*	10.5	12.4*	6.9	9.2*						6.1	7.9*
	LC	16.9*	16.9*	11.6	12.4*	7.6	9.2*						6.7	7.9*
-6.0	NLC													
	LC													

Stick 3.90 m

Stick m	Under- carriage	3.0 m		4.5 m		6.0 m		7.5 m		9.0 m		10.5 m		m		
		↕	↔	↕	↔	↕	↔	↕	↔	↕	↔	↕	↔			
10.5	NLC															
	LC															
9.0	NLC												2.3*	2.3*		
	LC												2.3*	2.3*		
7.5	NLC												2.1*	2.1*		
	LC												2.1*	2.1*		
6.0	NLC								5.0*	5.0*	2.9*	2.9*		2.0*	2.0*	
	LC								5.0*	5.0*	2.9*	2.9*		2.0*	2.0*	
4.5	NLC								5.9	6.0*	4.3*	4.3*		2.0*	2.0*	
	LC								6.0*	6.0*	4.3*	4.3*		2.0*	2.0*	
3.0	NLC					10.7*	10.7*	7.9	8.6*	5.6	7.4*	4.2	5.3*		2.0*	2.0*
	LC					10.7*	10.7*	8.6*	8.6*	6.1	7.4*	4.6	5.3*		2.0*	2.0*
1.5	NLC	12.0*	12.0*	11.3	13.6*	7.4	10.0*	5.3	8.2*	4.0	6.2*			2.2*	2.2*	
	LC	12.0*	12.0*	12.4	13.6*	8.1	10.0*	5.8	8.2*	4.4	6.2*			2.2*	2.2*	
0	NLC	9.8*	9.8*	10.6	15.5*	7.0	11.2*	5.1	8.6	3.9	6.6			2.4*	2.4*	
	LC	9.8*	9.8*	11.7	15.5*	7.7	11.2*	5.6	8.7	4.3	6.6			2.4*	2.4*	
-1.5	NLC	11.6*	11.6*	10.2	16.1*	6.8	11.7*	4.9	8.5	3.8	5.8*			2.8*	2.8*	
	LC	11.6*	11.6*	11.3	16.1*	7.4	11.7*	5.4	8.5	4.2	5.8*			2.8*	2.8*	
-3.0	NLC	14.8*	14.8*	10.1	15.6*	6.7	11.5*	4.9	8.4					3.5*	3.5*	
	LC	14.8*	14.8*	11.2	15.6*	7.3	11.5*	5.4	8.4					3.5*	3.5*	
-4.5	NLC	19.4*	19.4*	10.3	13.9*	6.7	10.4*	5.0	7.4*					4.8	4.8*	
	LC	19.4*	19.4*	11.4	13.9*	7.4	10.4*	5.5	7.4*					4.8*	4.8*	
-6.0	NLC	14.5*	14.5*	10.5*	10.5*	7.0	7.4*							6.8	7.1*	
	LC	14.5*	14.5*	10.5*	10.5*	7.4*	7.4*							7.1*	7.1*	

↕ Height ↔ Can be slewed though 360° In longitudinal position of undercarriage Max. reach * Limited by hydr. capacity

The lift capacities on the load hook of the Liebherr quick coupler 66 without attachment are stated in metric tonnes (t), and can be lifted 360° on firm, level supporting surface. Adjacent values are valid for the undercarriage when in the longitudinal position. Capacities are valid for 600 mm wide triple-grouser pads. Indicated loads are based on ISO 10567 standard and do not exceed 75 % of tipping or 87 % of hydraulic capacity (indicated by *) or are limited through the allowed lift capacity of the load hook on the quick coupler (12 t). Without quick coupler the lift capacities will increase by 350 kg, without bucket cylinder, link and lever they increase by an additional 400 kg. Lifting capacity of the excavator is limited by machine stability and hydraulic capacity.

According to European Standard, EN 474-5: In the European Union excavators have to be equipped with an overload warning device, a load diagram and automatic check valves on the hoist cylinders, when they are used for lifting operations which require the use of lifting accessories.

Lift Capacities

with Two-piece Boom 4.20 m and Heavy Counterweight

Stick 2.50 m

m	Under-carriage	3.0 m		4.5 m		6.0 m		7.5 m		9.0 m		10.5 m		m
		LC	NLC	LC	NLC	LC	NLC	LC	NLC	LC	NLC	LC	NLC	
10.5	NLC LC												4.8* 4.8*	4.1
9.0	NLC LC					5.3* 5.3*	5.3*						3.9* 3.9*	6.4
7.5	NLC LC			8.5* 8.5*	8.5*	7.9* 7.9*	7.9*	4.8* 4.8*	4.8*				3.6* 3.6*	7.7
6.0	NLC LC	12.0* 12.0*	12.0*	11.3* 11.3*	11.3*	8.6* 8.6*	10.1*	5.9* 5.9*	7.9*				3.5* 3.5*	8.6
4.5	NLC LC	21.2* 21.2*	21.2*	12.5* 13.4*	14.4*	8.4* 9.0*	10.8*	5.9* 6.4*	8.8*	4.1* 4.4*	4.9*		3.5* 3.5*	9.2
3.0	NLC LC	19.5* 19.5*	19.5*	12.1* 13.0*	15.6*	8.3* 8.8*	11.4*	5.8* 6.3*	8.9*	4.0* 4.4*	6.7*		3.6* 3.7*	9.5
1.5	NLC LC	20.8* 20.8*	20.8*	12.1* 12.9*	15.6*	8.1* 8.8*	11.4*	5.6* 6.0*	8.8*	3.9* 4.2*	6.6*		3.4* 3.8*	9.5
0	NLC LC	21.7* 23.3*	23.3*	11.5* 12.7*	15.6*	7.7* 8.4*	11.4*	5.2* 5.7*	8.9*	3.7* 4.1*	6.4*		3.5* 3.8*	9.3
-1.5	NLC LC	20.9* 23.8*	25.0*	11.0* 12.2*	15.9*	7.3* 8.0*	11.6*	4.9* 5.4*	8.6*				3.7* 4.1*	8.9
-3.0	NLC LC	20.8* 23.6*	25.1*	10.8* 12.0*	16.2*	6.8* 7.5*	11.2*	4.8* 5.3*	8.6*				4.2* 4.4*	8.1
-4.5	NLC LC	20.9* 21.4*	21.4*	10.4* 11.6*	12.6*	6.7* 6.7*							4.8* 4.8*	6.5
-6.0	NLC LC													

Stick 2.80 m

m	Under-carriage	3.0 m		4.5 m		6.0 m		7.5 m		9.0 m		10.5 m		m
		LC	NLC	LC	NLC	LC	NLC	LC	NLC	LC	NLC	LC	NLC	
10.5	NLC LC												4.1* 4.1*	4.7
9.0	NLC LC							5.7* 5.7*	5.7*				3.4* 3.4*	6.8
7.5	NLC LC							7.3* 7.3*	5.3* 5.3*	5.3*			3.2* 3.2*	8.1
6.0	NLC LC					9.5* 9.5*	9.5*	8.6* 8.9*	6.0* 6.4*	7.4*			3.1* 3.1*	9.0
4.5	NLC LC	21.9* 21.9*	21.9*	12.5* 13.4*	14.0*	8.4* 9.0*	10.6*	6.0* 6.4*	8.6*	4.1* 4.5*	5.7*		3.1* 3.1*	9.5
3.0	NLC LC	19.6* 19.6*	19.6*	12.1* 13.0*	15.4*	8.2* 8.8*	11.2*	5.8* 6.3*	8.9*	4.0* 4.4*	6.7*		3.2* 3.2*	9.8
1.5	NLC LC	20.4* 20.4*	20.4*	12.0* 12.8*	15.5*	8.2* 8.7*	11.3*	5.6* 6.1*	8.8*	4.3* 4.6*	6.6*		3.2* 3.5*	9.8
0	NLC LC	21.8* 22.6*	22.6*	11.6* 12.8*	15.5*	7.7* 8.4*	11.3*	5.3* 5.8*	8.8*	3.7* 4.1*	6.4*		3.3* 3.6*	9.6
-1.5	NLC LC	20.9* 23.8*	24.7*	11.0* 12.2*	15.7*	7.3* 8.0*	11.5*	5.0* 5.5*	8.6*	3.6* 4.0*	5.7*		3.5* 3.8*	9.2
-3.0	NLC LC	20.6* 23.5*	25.1*	10.7* 11.9*	16.2*	6.8* 7.5*	11.5*	4.7* 5.2*	7.6*				3.9* 4.3*	8.5
-4.5	NLC LC	20.8* 23.0*	23.0*	10.4* 11.5*	13.8*	6.6* 7.3*	8.2*						4.2* 4.2*	7.0
-6.0	NLC LC													

Stick 3.10 m

m	Under-carriage	3.0 m		4.5 m		6.0 m		7.5 m		9.0 m		10.5 m		m
		LC	NLC	LC	NLC	LC	NLC	LC	NLC	LC	NLC	LC	NLC	
10.5	NLC LC												3.6* 3.6*	5.3
9.0	NLC LC					5.6* 5.6*	5.6*						3.0* 3.0*	7.2
7.5	NLC LC					6.7* 6.7*	5.4* 5.4*	5.4* 5.4*					2.8* 2.8*	8.4
6.0	NLC LC			8.1* 8.1*	8.1*	7.9* 7.9*	6.0* 6.4*	6.9* 6.9*	3.9* 3.9*	3.9*			2.7* 2.7*	9.3
4.5	NLC LC	20.7* 20.7*	20.7*	12.6* 13.5*	13.6*	8.4* 9.0*	10.4*	6.0* 6.5*	8.5* 8.5*	4.2* 4.5*	5.9*		2.7* 2.7*	9.8
3.0	NLC LC	19.8* 19.8*	19.8*	12.1* 13.0*	15.1*	8.2* 8.7*	11.0*	5.9* 6.4*	8.7* 8.7*	4.1* 4.4*	6.7*		2.8* 2.8*	10.1
1.5	NLC LC	20.1* 20.1*	20.1*	11.9* 12.7*	15.4*	8.1* 8.6*	11.3*	5.7* 6.2*	8.7* 8.7*	3.9* 4.3*	6.6*		3.0* 3.0*	10.1
0	NLC LC	21.7* 22.0*	22.0*	11.7* 12.8*	15.4*	7.7* 8.4*	11.2*	5.4* 5.8*	8.7* 8.7*	3.7* 4.1*	6.4*		3.1* 3.4*	9.9
-1.5	NLC LC	20.9* 23.8*	24.2*	11.0* 12.2*	15.5*	7.3* 8.0*	11.3*	5.0* 5.5*	8.6* 8.6*	3.6* 4.0*	6.2*		3.2* 3.6*	9.5
-3.0	NLC LC	20.5* 23.4*	25.0*	10.7* 11.8*	16.0*	6.9* 7.6*	11.6*	4.7* 5.2*	8.1* 8.1*				3.7* 4.0*	8.8
-4.5	NLC LC	20.7* 23.6*	23.8*	10.4* 11.5*	14.7*	6.6* 7.3*	9.3*	4.0* 4.0*					3.8* 3.8*	7.5
-6.0	NLC LC												9.3* 9.3*	3.8

Stick 3.90 m

m	Under-carriage	3.0 m		4.5 m		6.0 m		7.5 m		9.0 m		10.5 m		m
		LC	NLC	LC	NLC	LC	NLC	LC	NLC	LC	NLC	LC	NLC	
10.5	NLC LC							3.9* 3.9*	3.9*				2.5* 2.5*	6.7
9.0	NLC LC								3.9* 3.9*				2.2* 2.2*	8.3
7.5	NLC LC					5.2* 5.2*	5.2*	4.9* 4.9*	3.2* 3.2*	3.2*			2.0* 2.0*	9.4
6.0	NLC LC					5.8* 5.8*	5.8*	5.6* 5.6*	4.3* 4.5*	4.5*			2.0* 2.0*	10.1
4.5	NLC LC			8.3* 8.3*	8.3*	7.7* 7.7*	7.7*	6.4* 6.4*	6.9* 6.9*	4.7* 5.6*	2.5* 2.5*		2.0* 2.0*	10.6
3.0	NLC LC	21.1* 21.1*	21.1*	12.2* 13.1*	14.2*	8.2* 8.8*	10.6*	6.0* 6.4*	8.5* 8.5*	4.2* 4.6*	6.7*	3.0* 3.3*	2.0* 2.0*	10.9
1.5	NLC LC	19.8* 19.8*	19.8*	11.9* 12.7*	15.3*	8.0* 8.6*	11.1*	5.9* 6.4*	8.6* 8.6*	4.1* 4.5*	6.7*	2.9* 3.2*	2.2* 2.2*	10.9
0	NLC LC	20.8* 20.8*	20.8*	11.8* 12.7*	15.3*	7.9* 8.6*	11.1*	5.6* 6.1*	8.6* 8.6*	3.9* 4.3*	6.5*	2.8* 3.1*	2.4* 2.4*	10.7
-1.5	NLC LC	21.5* 22.9*	22.9*	11.3* 12.4*	15.3*	7.4* 8.1*	11.1*	5.2* 5.7*	8.6* 8.7*	3.7* 4.0*	6.4*		2.7* 2.7*	10.4
-3.0	NLC LC	20.7* 23.5*	24.6*	10.7* 11.9*	15.6*	7.1* 7.8*	11.4*	4.9* 5.4*	8.5* 8.5*	3.5* 3.9*	5.9*		3.1* 3.2*	9.7
-4.5	NLC LC	20.5* 23.3*	24.8*	10.5* 11.7*	16.0*	6.7* 7.4*	11.1*	4.6* 5.1*	7.2*				3.2* 3.2*	8.8
-6.0	NLC LC	20.5* 20.5*	20.5*	10.2* 11.4*	12.1*	6.5* 6.8*	6.8*						4.4* 4.4*	6.7

Height Can be slewed through 360° In longitudinal position of undercarriage Max. reach * Limited by hydr. capacity

The lift capacities on the load hook of the Liebherr quick coupler 66 without attachment are stated in metric tonnes (t), and can be lifted 360° on firm, level supporting surface. Adjacent values are valid for the undercarriage when in the longitudinal position. Capacities are valid for 600 mm wide triple-grouser pads with adjusting cylinder in optimal position. Indicated loads are based on ISO 10567 standard and do not exceed 75 % of tipping or 87 % of hydraulic capacity (indicated by *) or are limited through the allowed lift capacity of the load hook on the quick coupler (12 t). Without quick coupler the lift capacities will increase by 350 kg, without bucket cylinder, link and lever they increase by an additional 400 kg. Lifting capacity of the excavator is limited by machine stability and hydraulic capacity.

According to European Standard, EN 474-5: In the European Union excavators have to be equipped with an overload warning device, a load diagram and automatic check valves on the hoist cylinders, when they are used for lifting operations which require the use of lifting accessories.

Lift Capacities

with Straight Mono Boom 6.50 m and Heavy Counterweight

Stick 2.50 m

m	Under-carriage	3.0 m		4.5 m		6.0 m		7.5 m		9.0 m		10.5 m		m
		↕	↔	↕	↔	↕	↔	↕	↔	↕	↔	↕	↔	
10.5	NLC LC													
9.0	NLC LC					4.3*	4.3*					4.1*	4.1*	6.0
7.5	NLC LC					7.7*	7.7*					3.7*	3.7*	7.5
6.0	NLC LC					8.2	9.1*	5.8	7.3*			3.5*	3.5*	8.4
4.5	NLC LC	19.9*	19.9*	12.1	12.8*	7.8	10.0*	5.6	8.5*			3.5*	3.5*	9.0
3.0	NLC LC			11.1	15.1*	7.4	11.0*	5.4	8.9	4.1	5.8*	3.6*	3.6*	9.3
1.5	NLC LC			10.4	15.9*	7.0	11.8*	5.2	8.7	4.0	6.6	3.8	3.9*	9.3
0	NLC LC			10.2	15.8*	6.8	11.8*	5.0	8.5	3.9	5.6*	3.9	4.3*	9.1
-1.5	NLC LC	10.5*	10.5*	10.2	14.4*	6.7	11.2*	5.0	8.5			4.2	5.1*	8.6
-3.0	NLC LC	14.4*	14.4*	10.3	12.2*	6.8	9.7*	5.1	7.3*			4.8	6.5*	7.9
-4.5	NLC LC			8.7*	8.7*	6.8*	6.8*					5.6*	5.6*	6.6
-6.0	NLC LC			8.7*	8.7*	6.8*	6.8*					5.6*	5.6*	

Stick 2.80 m

m	Under-carriage	3.0 m		4.5 m		6.0 m		7.5 m		9.0 m		10.5 m		m
		↕	↔	↕	↔	↕	↔	↕	↔	↕	↔	↕	↔	
10.5	NLC LC													
9.0	NLC LC							5.3*	5.3*					6.5
7.5	NLC LC							7.1*	7.1*	4.7*	4.7*			7.8
6.0	NLC LC							8.3	8.4*	5.8	7.0*			8.7
4.5	NLC LC	18.3*	18.3*	12.2	12.2*	7.9	9.7*	5.6	8.2*	4.2	4.7*			9.3
3.0	NLC LC			11.2	14.6*	7.4	10.7*	5.4	8.7*	4.1	6.5*			9.6
1.5	NLC LC			10.4	16.0*	7.0	11.6*	5.1	8.6	4.0	6.6			9.6
0	NLC LC	5.2*	5.2*	10.1	15.9*	6.7	11.8*	5.0	8.5	3.9	6.5			9.4
-1.5	NLC LC	10.0*	10.0*	10.1	14.8*	6.6	11.3*	4.9	8.4			3.7	3.7*	9.0
-3.0	NLC LC	15.1*	15.1*	10.2	12.7*	6.7	9.9*	5.0	7.6*			4.4	5.4*	8.2
-4.5	NLC LC			9.5*	9.5*	6.9	7.4*					5.6*	5.6*	7.0
-6.0	NLC LC			9.5*	9.5*	7.4*	7.4*					5.6*	5.6*	

Stick 3.10 m

m	Under-carriage	3.0 m		4.5 m		6.0 m		7.5 m		9.0 m		10.5 m		m
		↕	↔	↕	↔	↕	↔	↕	↔	↕	↔	↕	↔	
10.5	NLC LC													
9.0	NLC LC											3.2*	3.2*	6.9
7.5	NLC LC							5.1*	5.1*			2.9*	2.9*	8.2
6.0	NLC LC					7.5*	7.5*	5.8	6.6*	3.0*	3.0*	2.7*	2.7*	9.0
4.5	NLC LC			11.6*	11.6*	7.9	9.3*	5.6	8.0*	4.2	5.3*	2.7*	2.7*	9.6
3.0	NLC LC			11.3	14.1*	7.4	10.4*	5.4	8.5*	4.0	6.7	2.8*	2.8*	9.9
1.5	NLC LC			10.4	15.7*	7.0	11.4*	5.1	8.6	3.9	6.6	3.0*	3.0*	9.9
0	NLC LC	5.8*	5.8*	10.0	16.0*	6.7	11.7*	4.9	8.4	3.8	6.5	3.2*	3.2*	9.7
-1.5	NLC LC	9.6*	9.6*	9.9	15.0*	6.6	11.4*	4.8	8.3	3.8	6.3*	3.7*	3.7*	9.3
-3.0	NLC LC	14.1*	14.1*	10.0	13.2*	6.6	10.2*	4.9	7.9*			4.1	4.6*	8.5
-4.5	NLC LC			10.2*	10.2*	6.8	8.0*					5.1	5.5*	7.4
-6.0	NLC LC			10.2*	10.2*	7.4	8.0*					5.5*	5.5*	

Stick 3.90 m

m	Under-carriage	3.0 m		4.5 m		6.0 m		7.5 m		9.0 m		10.5 m		m
		↕	↔	↕	↔	↕	↔	↕	↔	↕	↔	↕	↔	
10.5	NLC LC													
9.0	NLC LC							3.7*	3.7*					6.4
7.5	NLC LC							4.8*	4.8*	2.7*	2.7*			8.0
6.0	NLC LC							5.4*	5.4*	4.3*	4.3*			9.2
4.5	NLC LC							6.9*	6.9*	5.7	6.4*	4.2	5.3*	9.9
3.0	NLC LC	19.9*	19.9*	11.8	12.6*	7.6	9.6*	5.4	8.0*	4.1	6.4*	2.8*	2.8*	10.4
1.5	NLC LC	6.1*	6.1*	10.8	14.9*	7.1	10.8*	5.6	8.6*	4.3	6.6	2.0*	2.0*	10.7
0	NLC LC	6.5*	6.5*	10.2	15.9*	6.8	11.5*	4.9	8.4	3.8	6.4	2.5*	2.5*	10.5
-1.5	NLC LC	8.8*	8.8*	9.9	15.7*	6.5	11.6*	4.8	8.3	3.7	6.3	2.6*	2.6*	10.1
-3.0	NLC LC	11.9*	11.9*	11.0	14.4*	6.5	10.9*	4.8	8.2	3.7	6.3	3.1*	3.1*	9.5
-4.5	NLC LC	16.1*	16.1*	10.0	12.1*	6.6	9.3*	4.8	7.0*			4.0*	4.0*	8.5
-6.0	NLC LC			8.3*	8.3*	6.2*	6.2*					5.1*	5.1*	6.7

↕ Height ↔ Can be slewed though 360° ↕ In longitudinal position of undercarriage Max. reach * Limited by hydr. capacity

The lift capacities on the load hook of the Liebherr quick coupler 66 without attachment are stated in metric tonnes (t), and can be lifted 360° on firm, level supporting surface. Adjacent values are valid for the undercarriage when in the longitudinal position. Capacities are valid for 600 mm wide triple-grouser pads. Indicated loads are based on ISO 10567 standard and do not exceed 75 % of tipping or 87 % of hydraulic capacity (indicated by *) or are limited through the allowed lift capacity of the load hook on the quick coupler (12 t). Without quick coupler the lift capacities will increase by 350 kg, without bucket cylinder, link and lever they increase by an additional 400 kg. Lifting capacity of the excavator is limited by machine stability and hydraulic capacity.

According to European Standard, EN 474-5: In the European Union excavators have to be equipped with an overload warning device, a load diagram and automatic check valves on the hoist cylinders, when they are used for lifting operations which require the use of lifting accessories.

Available Buckets

Stick 2.50 m/2.80 m/3.10 m/3.90 m

Mounting	Execution	Width (mm)	Capacity (m ³)	Teeth	Number of teeth	Weight (kg)
Direct	STD	850	0.75	Z 50	3	810
Direct	STD	1,050	1.00	Z 50	4	940
Direct	STD	1,250	1.25	Z 50	5	1,070
Direct	STD	1,400	1.45	Z 50	5	1,140
Direct	STD	1,550	1.60	Z 50	5	1,210
Direct	STD	1,650	1.75	Z 50	5	1,280
Direct	HD	850	0.75	Z 50	3	940
Direct	HD	1,050	1.00	Z 50	4	1,100
Direct	HD	1,250	1.25	Z 50	5	1,250
Direct	HD	1,400	1.45	Z 50	5	1,340
Direct	HD	1,550	1.60	Z 50	5	1,430
Direct	HD	1,650	1.75	Z 50	5	1,500
Direct	STD	850	0.85	Cutting edge	/	810
Direct	STD	1,050	1.10	Cutting edge	/	910
Direct	STD	1,250	1.40	Cutting edge	/	1,030
Direct	STD	1,400	1.60	Cutting edge	/	1,110
Direct	STD	1,550	1.80	Cutting edge	/	1,190
Direct	HD	850	0.85	Cutting edge	/	940
Direct	HD	1,050	1.10	Cutting edge	/	1,060
Direct	HD	1,250	1.40	Cutting edge	/	1,200
Direct	HD	1,400	1.60	Cutting edge	/	1,300
Direct	HD	1,550	1.80	Cutting edge	/	1,400
SW 48	STD	650	0.55	Z 40	3	590
SW 48	STD	850	0.75	Z 40	3	630
SW 48	STD	1,050	0.95	Z 40	4	710
SW 48	STD	1,250	1.15	Z 40	5	790
SW 48	STD	1,400	1.35	Z 40	5	870
SW 48	STD	1,500	1.45	Z 40	5	910
SW 48	STD	1,550	1.60	Z 40	5	1,230
SW 48	STD	1,600	1.55	Z 40	5	950
SW 48	HD	650	0.55	Z 40	3	650
SW 48	HD	850	0.75	Z 40	3	705
SW 48	HD	1,050	0.95	Z 40	4	800
SW 48	HD	1,250	1.15	Z 40	5	890
SW 48	HD	1,400	1.35	Z 40	5	980
SW 48	HD	1,500	1.45	Z 40	5	1,025
SW 48	HD	1,600	1.55	Z 40	5	1,070
SW 66	STD	800	0.70	Z 50	3	820
SW 66	STD	1,050	1.00	Z 50	4	960
SW 66	STD	1,250	1.25	Z 50	5	1,090
SW 66	STD	1,400	1.45	Z 50	5	1,160
SW 66	STD	1,550	1.60	Z 50	5	1,230
SW 66	STD	1,650	1.75	Z 50	5	1,300
SW 66	HD	800	0.70	Z 50	3	960
SW 66	HD	1,050	1.00	Z 50	4	1,120
SW 66	HD	1,250	1.25	Z 50	5	1,270
SW 66	HD	1,400	1.45	Z 50	5	1,360
SW 66	HD	1,550	1.60	Z 50	5	1,450
SW 66	HD	1,650	1.75	Z 50	5	1,520
SW 48 / SW 66	STD	800	0.75	Cutting edge	/	810
SW 48 / SW 66	STD	1,050	1.10	Cutting edge	/	930
SW 48 / SW 66	STD	1,250	1.40	Cutting edge	/	1,040
SW 48 / SW 66	STD	1,400	1.60	Cutting edge	/	1,130
SW 48 / SW 66	STD	1,550	1.80	Cutting edge	/	1,210
SW 48 / SW 66	HD	800	0.75	Cutting edge	/	940
SW 48 / SW 66	HD	1,050	1.10	Cutting edge	/	1,080
SW 48 / SW 66	HD	1,250	1.40	Cutting edge	/	1,220
SW 48 / SW 66	HD	1,400	1.60	Cutting edge	/	1,320
SW 48 / SW 66	HD	1,550	1.80	Cutting edge	/	1,420

Standard Equipment



Undercarriage

Lifetime-lubricated track rollers
Tracks sealed and greased
Track guide at each track frame (one piece)
Sprocket with dirt ejector
Lashing eyelets



Uppercarriage

Handrails, non slip surfaces
Liebherr full-automatic central lubrication system
(except connecting link for bucket kinematics)
Engine hood with lift help
Sound insulation
Maintenance-free swing brake lock
Lockable tool box
Extended tool kit



Hydraulics

Hydraulic tank shut-off valve and pumps
Pressure test ports for hydraulic
Pressure storage for controlled lowering of equipment with engine turned off
Filter with integrated fine filter area
Liebherr hydraulic oil
Stepless work mode selector



Engine

Turbo charger
Common-Rail system injection
Conform with level IIIB/Tier 4i emission standard
Fuel filter and water separator
After-cooled
Liebherr particle filter
Sensor-controlled automatic engine idling



Operator's Cab

Storage bin
Mechanical hour meters, readable from outside the cab
Sunroof, right window and windshield with safety glass
Operator seat Comfort
Cup holder
Completely retractable windscreen
Front windscreen (bottom) retractable
Rubber floor mat
Hydro mounts
Dome light
Coat hook
Automatic air conditioning
Fuel consumption indicator
LiDAT Plus (Liebherr data transfer system)*
7" colour multifunction display with touchscreen
Emergency exit rear window
Preparation for radio installation
Rain hood over front window opening
ROPS safety cab structure
Rear space monitoring with camera
All tinted windows
Headlights (two pieces, Halogen)
Door with sliding windows
Seat belt
Roll-down sun blind
Storage space
Wiper/washer
Cigarette lighter and ashtray



Attachment

Safety check valves hoist cylinder
Headlight on boom (right, Halogen)

* optionally extendable after one year

Individual Options



Undercarriage

- Reinforced base panel for centre section
- Reinforced cover plate and base plate for centre section
- Straight track guide
- Track guide at each track frame (three pieces)
- Track guide at each track frame (four pieces)
- Tool box



Upper Carriage

- Heavy counterweight
- Refuelling pump (electrical)
- Fuel anti-theft device
- Reversible fan drive
- Upper carriage guard at bottom and sides
- Customized colors



Hydraulics

- Liebherr hydraulic oil, biodegradable
- Liebherr hydraulic oil, specially for warm and cold regions
- Bypass filter



Engine

- Air pre-filter with dust trap
- Automatic engine shut-down (adjustable time-period)
- Lighting engine compartment
- Fuel pre-heating system



Operator's Cab

- Operator seat Premium
- Travel alarm system
- Fire extinguisher
- Footrest
- Electric cool box (12 V)
- Proportional controls Liebherr
- Engine shut-down (emergency stop) in cab
- Bullet-proof glass panel in roof
- Bullet-proof front window (one piece, fixed installation – can not be opened)
- Bullet-proof front window (two pieces, fixed installation – can not be opened)
- Radio Comfort
- Amber beacon
- Roof wiper
- Headlights (two pieces, Xenon)
- FOPS top guard
- FGPS front guard
- Sun visor
- Auxiliary heater with weekly timer
- Electronic drive away lock
- Additional headlights or/and rear headlights (Halogen or Xenon)



Attachment

- High pressure circuit
- Security for hoist cylinder in grab or hammer operation
- Piston rod guard for bucket cylinders
- Piston rod guard for adjustable cylinders
- Liebherr automatic lubrication system for link geometry
- Hydraulic or mechanical quick coupler
- Liebherr line of buckets
- Liebherr Tool-Control
- Liebherr Tool-Management
- Liebherr tooth system
- LIKUFIX
- Middle pressure circuit
- Straight mono boom
- Safety check valves stick cylinder
- Headlights on boom (right, Xenon)
- Stick cylinder shut-down, adjustable
- Overload warning device
- Bottom boom protection for gooseneck boom or stick
- Two-piece boom
- Additional headlights on boom (left, Halogen or Xenon)

Options and/or special attachments, supplied by vendors other than Liebherr, are only to be installed with the knowledge and approval of Liebherr in order to retain warranty.

All illustrations and data may differ from standard equipment. Subject to change without notice. All indicated loads are based in accordance with ISO 9248.

The Liebherr Group of Companies



Wide Product Range

The Liebherr Group is one of the largest construction equipment manufacturers in the world. Liebherr's high-value products and services enjoy a high reputation in many other fields. The wide range includes domestic appliances, aerospace and transportation systems, machine tools and maritime cranes.

Exceptional Customer Benefit

Every product line provides a complete range of models in many different versions. With both their technical excellence and acknowledged quality, Liebherr products offer a maximum of customer benefits in practical application.

State-of-the-art Technology

To provide consistent, top quality products, Liebherr attaches great importance to each product area, its components and core technologies. Important modules and components are developed and manufactured in-house, for instance the entire drive and control technology for construction equipment.

Worldwide and Independent

Hans Liebherr founded the Liebherr family company in 1949. Since that time, the enterprise has steadily grown to a group of more than 120 companies with over 35,000 employees located on all continents. The corporate headquarters of the Group is Liebherr-International AG in Bulle, Switzerland. The Liebherr family is the sole owner of the company.

www.liebherr.com

Liebherr-France SAS

2 avenue Joseph Rey, B.P. 90287, F-68005 Colmar Cedex
☎ +33 389 21 30 30, Fax +33 389 21 37 93
www.liebherr.com, E-Mail: info.lfr@liebherr.com