

VOLVO CONSTRUCTION EQUIPMENT

# VOLVO G900 MOTOR GRADERS



**MORE CARE. BUILT IN.**



# TRADITIONAL VALUES. ADVANCED PERFORMANCE.

The G900 family of Volvo Motor Graders brings the Volvo promise of lasting value to every application.

## **More care. Built in.**

Volvo makes this promise to customers everywhere: to satisfy your highest expectations for equipment that's productive, operator-friendly, reliable and easy to service. Now, Volvo brings you a full range of seven motor graders, all built to keep that same promise in every way.

## **Power and precision**

Dig into the job and your G900 Motor Grader digs in with you. Volvo engines are renowned for high torque at low RPMs, producing responsive, fuel-efficient performance under all operating conditions. Save time and costs with more one-pass finishes, thanks to advanced systems like the Volvo Proportional Demand Flow (PDF) hydraulics, designed to work with your choice of leading Automatic Blade Control systems. Add in the powerful direct-drive circle turn system and innovative Volvo HTE transmissions with efficient shuttle shift and optional Autoshift feature (standard on the HTE1160) for optimum productivity right at your fingertips.

## **Less work, more production**

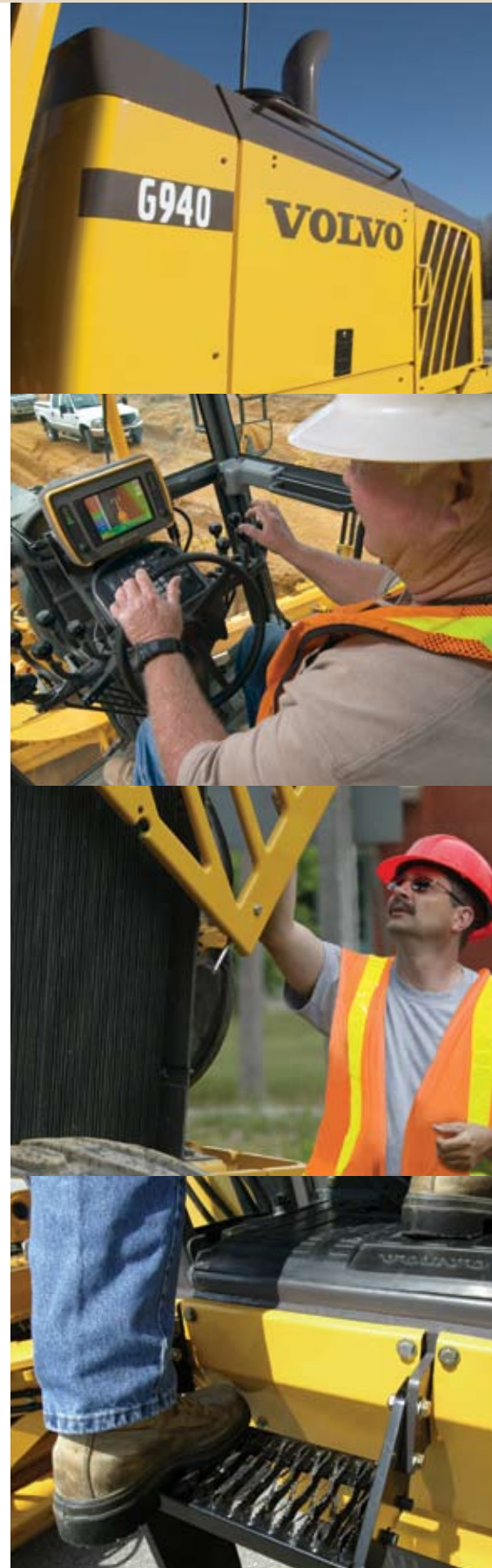
G900 Motor Graders take a simple approach to maximizing uptime: minimize the machine's need for service, then simplify every required service task. Sensible service design starts with easy ground-level fueling, effortless daily fluid level checks and a modular powertrain design for easy service maintenance. Volvo Contronics provides comprehensive electronic monitoring to achieve optimum machine performance, every day.

## **Making the best, better!**

G900 Motor Graders express a long-standing recognition that productive machines begin with productive operators. With its familiar industry-standard controls and advanced powertrain options, the G900 cab works with the professional operator to get the best out of every working day. Expansive glass areas provide exceptional visibility in every direction, near and far. Long working days get easier with low-effort levers and pedals, ergonomic controls and a wide range of convenience amenities.

## **Quality with confidence**

Built on a foundation of field-proven components, including Volvo engines and transmissions, G900 Motor Graders are engineered with years of reliable service life built in. Volvo's first user lifetime frame warranty covers the entire frame, from the articulation pins and bearings to the full-perimeter rear frame, originally developed by Volvo to bring tool-carrier strength and durability to motor graders. In every detail, from the proven Duramide™ circle support bearings to Volvo APR planetary reduction axles, G900 Motor Graders reflect the Volvo commitment to lasting value.









# Volvo G900 Motor Graders

‡ With All Wheel Drive engaged

Model		G930	G940	G946	G960	G970	G976	G990
Base operating weight - approximate	kg (lb)	15 800 (34,830)	16 400 (36,150)	17 300 (38,140)	17 550 (38,690)	18 900 (41,660)	19 800 (43,650)	22 100 (48,720)
Engine model/displacement		D7E/7.2 L	D7E/7.2 L	D7E/7.2 L	D7E/7.2 L	D9B/9.4 L	D9B/9.4 L	D9B/9.4 L
Base range net power	kW (hp)	115 (155)	130 (175)	145* (195*)	145 (195)	156 (210)	168* (225*)	168 (225)
Mid range net power	kW (hp)	130 (175)	145 (195)	160* (215*)	160 (215)	171 (230)	183* (245*)	183 (245)
High range net power	kW (hp)	145 (195)	160 (215)	175* (235*)	175 (235)	186 (250)	198* (265*)	198 (265)



## A great place to spend the working day!

The G900 Care Cab expands on the Volvo tradition of productive, comfortable work environments for operators. Interior lighting and illumination of the steps and handholds ensure maximum ease and safety as you enter or exit. Exceptional visibility including a unique package of interior and exterior mirrors provides a commanding view to the front, rear and sides.

The adjustable pedestal, seat and low effort levers provide a wide range of comfortable operating positions. Ten vent openings surround the operator with fresh filtered air. Optional opening side and lower front windows permit passive ventilation. Quiet Volvo engines contribute to low interior sound levels, just 72 dB(A), for optimum operating comfort.

## The heart of grader performance

The industry's first 11-speed grader transmission, the optional HTE1160 with its standard Autoshift feature, sets the pace for maximum control in the low-speed range, responsive travel speeds in the high range, more precision in the working range and exceptional fuel efficiency for every task.

New D7E and D9B engines with Volvo Advanced Combustion Technology (V-ACT) are tailored for grader applications, designed to run cleanly and efficiently without the extra service requirements of additional equipment or after-treatment of exhaust gases.







### **All purpose, All Wheel Drive**

Volvo All Wheel Drive gives you three drive systems in one: a highly efficient 4-wheel tandem drive, 6-wheel drive for ultimate traction and high-speed snow-clearing, plus "Creep Mode," the industry's original hydrostatic, front-wheel-only drive system for exceptional fine-grading control.

Pioneered by Volvo in 1999, the exclusive Creep Mode drive introduced operators to the precise control achieved by grading with just the hydrostatic front-wheel drive engaged. By allowing the rear tandems to roll freely behind, Creep Mode means minimal scuffing and rework. With its extremely smooth starts and stops, Creep Mode eliminates ridges often left by the moldboard of conventional tandem-drive graders.





Volvo Construction Equipment is different. Our machines are designed, built and supported in a different way. That difference comes from an engineering heritage of over 175 years. A heritage of thinking first about the people who actually use the machines. About how to help them be safer, more comfortable, more productive. About the environment we all share. The result of that thinking is a growing range of machines and a global support network dedicated to helping you do more. People around the world are proud to use Volvo. And we're proud of what makes Volvo different – **More care. Built in.**



*Not all products are available in all markets. Under our policy of continuous improvement, we reserve the right to change specifications and design without prior notice. The illustrations do not necessarily show the standard version of the machine.*

# **VOLVO**

**Volvo Construction Equipment**  
[www.volvoce.com](http://www.volvoce.com)

Ref. No. VOE 21 C 100 2236  
Printed in Sweden 2009.01  
Volvo, Gøderich

English  
GRD