



ÅKERMAN
EC 130 C/150 C
EW 130 C/150 C

THE NEW
SERVICE MACHINES

**Improved digging
precision**

**Stronger and
faster swing
movement**

20% stronger lifts

**Lower rpms,
lower fuel
consumption**

**Cleaner exhaust
gases**

Quiet sound level

**More comfortable
working environ-
ment**

**Simpler daily
checks**

Increased safety

**Fast changes for
more work duties**

Greater capacity





Surpass yourself

These pages are chock-full of technical specs and data. But ultimately they are really about you. About how you can do a better job – and feel better afterwards.

You know what kind of digging precision you need. You know how much swing force you need. And you also know how tired precision jobs can make you feel. After many hours of sloping, grading and backfilling work, for example.

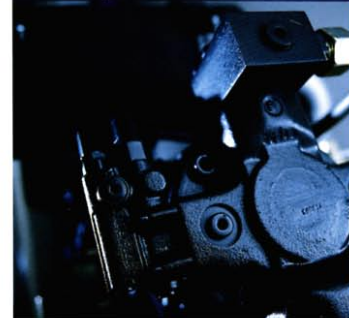
Imagine how much better you could feel. Imagine a supremely manoeuvrable and responsive machine. And one which also has plenty of power for heavy lifts. A machine that doesn't just save its operators from fatigue and strain – but also saves costs.

Naturally, the Åkerman EC130C/150C and EW130C/150C have been put through a very tough and thorough testing programme. The results made our test operators enthusiastic, to put it mildly. These new service machines surpass most of what you have experienced to date. Or even thought was possible.

Try them yourself and you'll see what we mean.



Test the strength and speed of the swing movement, for example in slope work. Capacity and quality are higher, digging cycles are shorter.



New hydraulic system with larger pumps and flow than in other service machines, for speed and precision. Three pumps, one for each digging function – a unique solution that facilitates three simultaneous movements.



Mode selector with HLD (Heavy Lift Device) function boosts pressure for extra strength in lifts. You can also dig in the ECO mode for economy or CAP for both strength and speed.



Low-emission engines with Intercooler (EC/EW150C) or without (EC/EW130C). Lower emissions, lower fuel consumption, lower sound level – thanks to reduced engine speed. You can run at low engine speeds – with full manoeuvrability.



Ideal operator environment. Try the adjustment options of the seat, for instance. Head restraint and electrically heated seat are standard. 14 air nozzles are standard. Warning lamps for low oil level and clogged air filter are also standard. Pre-start checkup from the cab.

Your new excavator gives you

ÅKE

Is hydraulic oil a source of well-being? We think so. Just think of the jobs that make the highest demands on pinpoint coordination of boom, dipper arm and bucket. Those are also the jobs that take the most out of the operator. Resulting in a risk of strain injuries and fatigue.

Our solution to this is a whole new hydraulic system. With three pumps and large available flows. This makes the precision jobs easier and less stressful. Nor does the transformation to a weight-lifter pose any problems.

More new features that facilitate the interplay between man and machine:

New swing motor and new controlled swing pump. You get greater manoeuvrability, so you can swing and load the dump truck faster.

Hydraulic quickfit device as standard. You can do more jobs with the same machine. Simpler and in a shorter time.

power when you need it

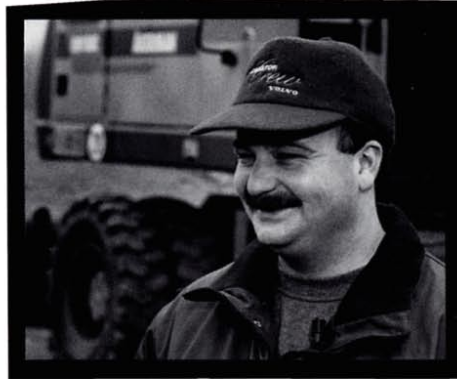


“Impressive speed and precision”

We started with the robust dependability you expect from an Åkerman machine.

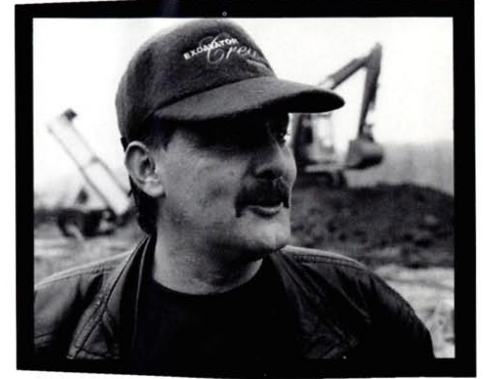
Then we added all you could wish for from modern general-purpose machines. Machines for everything from foundation work and construction jobs to ditching and trenching or heavy lifts.

Then came the real test – we put some extremely demanding operators in the cab. Professionals who knew what speed, precision and strength mean in terms of getting thousands of hours of efficiency and profitability.



Stefan Welsch
Germany

“The new Åkerman excavators are very quick and responsive without any loss of precision. Capacity has been improved in both the swing movement and the power transmission.”



Erwin Demaerschalk
Belgium

“This is a brand-new machine. The control range is good, and it is very easy to trench and slope with, for example. The machine is fantastic to operate!”



Gérard Maily
France

“The swing movement is by far the most important point. The hydraulic system makes it possible to obtain quick combined operation of the movements, whether it be boom, bucket or swing. I think it’s a real success.”



Ulf Andersson
Sweden

“This is a very easy-to-operate machine with fine feeling in the levers. Manoeuvrability is excellent, it is impressively fast. Furthermore, lifting capacity is also greatly improved, even compared with competing machines.”



Svein Olsen
Norway

“The design of the machine leaves nothing to be desired. The carriage body and the digging equipment are perfectly situated in relation to each other. There is plenty of power, operator comfort is tops as always, and the swing torque has really been improved.”

precision when you need it





Digging, grading, lifting ... you choose the tools

EC130C (EW130C)

| | |
|-------------------------------------|--|
| Engine | TD 40 GDE |
| Net output ISO9249/DIN 6271 | 67 kW / 91 hp |
| Gross SAE J1349 | 70 kW / 95 hp |
| Engine speed | 2000 r/min |
| Dipper arm | 2,0 m / 2,4 m |
| Max. reach | 8,3 m / 8,5 m* |
| Max. digging depth | 5,4 m / 5,4 m* (5,2 m / 5,2 m*) |
| Bucket, 1,8 t/m ³ | 600 l / 500 l* (500 l) |
| Operating weight with 600 mm tracks | 13 800 kg (13 700 kg) |

*hydraulically adjustable boom



The operator environment can be made even more comfortable – with optional air conditioning.



The undercarriage is easy to fit with outriggers, stabilizer blade or dozer blade.



Choose monobloc (4,4 m and 4,9 m) or hydraulically adjustable boom (4,62 m and 5,0 m).



Slope bucket, narrow bucket, grab bucket, rototilt, ripper tooth, hammer, shears, vibrator plate, auger ... your new service machine is versatility itself.



Hydraulic quickfit device with safe two-hand release is standard. Unlike many others, we insist on making the quickfit devices ourselves – to get the best possible match to the machine.



The machine's hydraulic cylinders are fitted with end position dampers. The boom dampers can also be adjusted to serve as height limiters – for safety's sake.

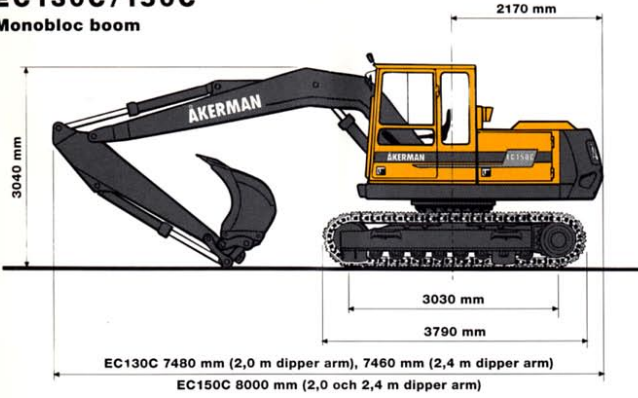
EC150C (EW150C)

| | |
|------------------------------|--|
| Engine | TD 40 KEE |
| Net output ISO9249/DIN 6271 | 78 kW / 106 hp |
| Gross SAE J1349 | 81 kW / 110 hp |
| Engine speed | 2000 r/min |
| Dipper arm | 2,0 m / 2,4 m |
| Max. reach | 8,9 m / 8,9 m* |
| Max. digging depth | 5,7 m / 5,9 m* (5,5 m / 5,7 m*) |
| Bucket, 1,8 t/m ³ | 700 l |

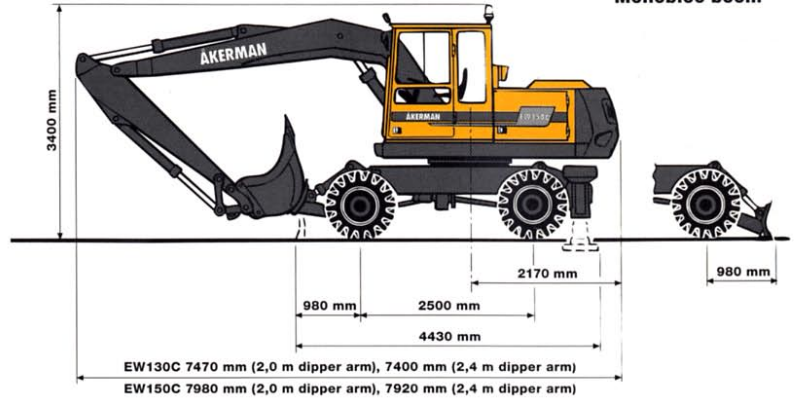
Operating weight with 600 mm tracks
14 700 kg (14 600 kg)

*hydraulically adjustable boom

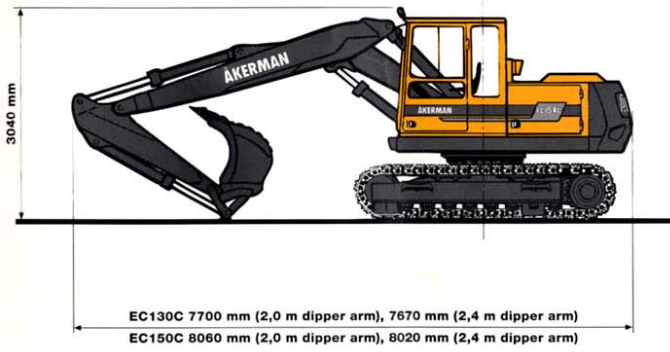
EC130C/150C
Monobloc boom



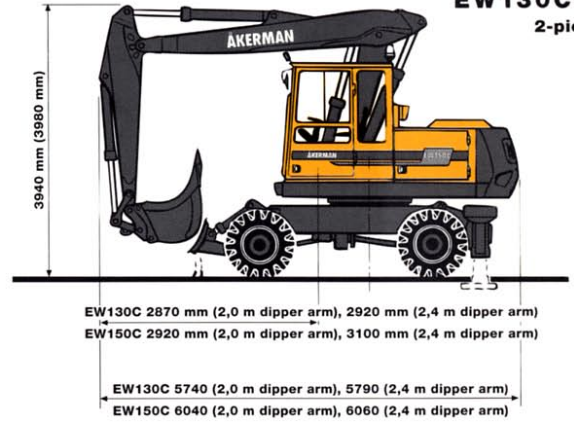
EW130C/150C
Monobloc boom



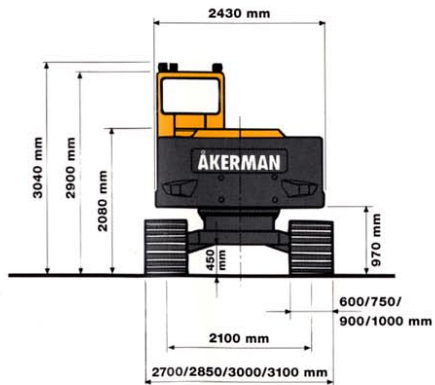
EC130C/150C
2-piece boom



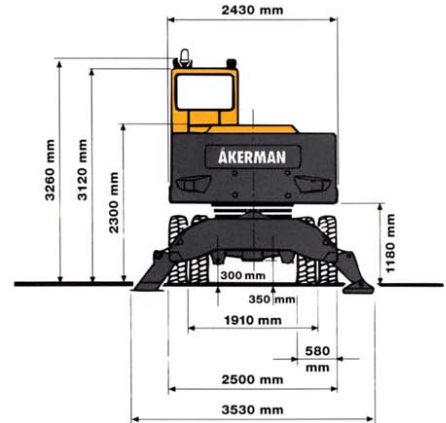
EW130C/150C
2-piece boom



EC130C/150C



EW130C/150C



Under our policy of continuous product improvement, we reserve the right to change specifications or design without prior notice. Illustrations do not necessarily show standard versions of the machines.

Consideration included

When you choose Åkerman EC130C/150C or EW130C/150C, you get more than just versatile service machines with new, unsurpassed capacity. You also get machines built with consideration for both man and the environment. And you get the security of a large service and parts organization. You have a demanding job – and demand results every day.

It is our job to show you every possible consideration, to help you perform. Every day.

**Volvo Construction
Equipment**

Ref. No. 21 1 430 0096 English
Printed in Sweden 03.06.96 EXC