

SR-300L

KATO



SR-300L

Rough Terrain Crane

Maximum rated lifting capacity: 30t × 3m
 Maximum boom length: 30.5m
 Engine output: 200kW / 2,600min⁻¹ (ISO Net)



Address inquiries to :



<http://www.kato-works.co.jp>

NOTE : Illustrations may include optional equipment. KATO products and specifications are subject to improvements and changes without notice.



**QUALITY & EXPERIENCE
SINCE 1895**

KATO WORKS CO.,LTD.

9-37, Higashi-ohi 1-chome, Shinagawa-ku, Tokyo 140-0011 Japan.
 Tel. : Head Office Tokyo(03)3458-1111
 Overseas Marketing Department Tokyo(03)3458-1115
 Fax. : Tokyo(03)3458-1163
 URL <http://www.kato-works.co.jp>

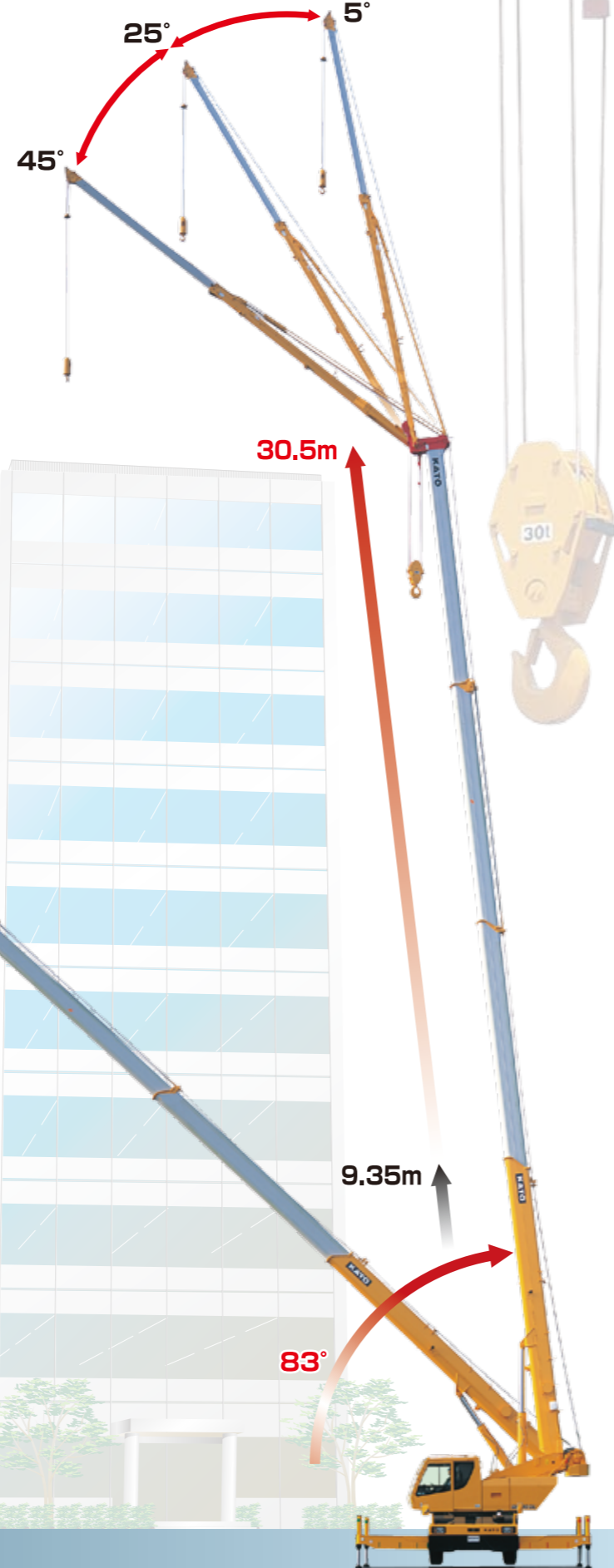
Powerful & Reliable 4 section round shaped SUPERBOOM

Fully Hydraulic operated solid 30.5m SUPERBOOM combined with 13m Fly-jib offers you wider working ranges and quick erection in narrow spaces

- Maximum Lifting Capacity — 30ton×3.0m
- Boom Length — 9.35m~30.5m
- Boom Derricking Angle — 0°~83°
- Jib Length — 7.9m & 13.0m
- Jib Off-set Angle — 5°, 25°, 45°
- Maximum Lifting Height — 31.2m (Boom)
44.8m (Jib)



Outrigger Width



Comfortable operator's cab for the Professional Works

New ACS Moment Limiter Compuload (MS-200) with outrigger width detector and working range limiting function



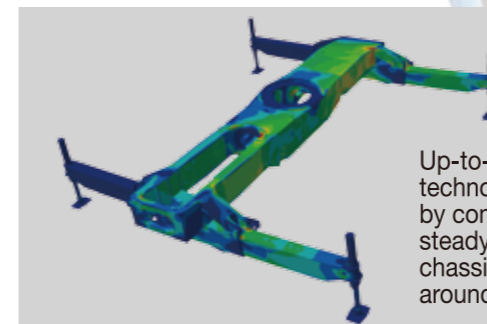
- Easy touch panel operation
- High quality color display
- Working range limiting function

- Big size new cluster meter
- Air duct (option)
- Durable switches

- Joystick control levers
- Fatigue free adjustable seat



Gentle to the Humanity and Gentle to the Nature



Up-to-dated design technologies assisted by computer assure steady and rigid chassis frame while all around lifting works.



New Mitsubishi Engine 6M60-TLE3A is complied with Tier III and Euro Stage IIIA.

- Max. power : 200kW/2,600min⁻¹
- Max. torque : 785N·m/1,400min⁻¹
- Max. traveling speed : 49km/h