

PRELIMINARY

Solmec

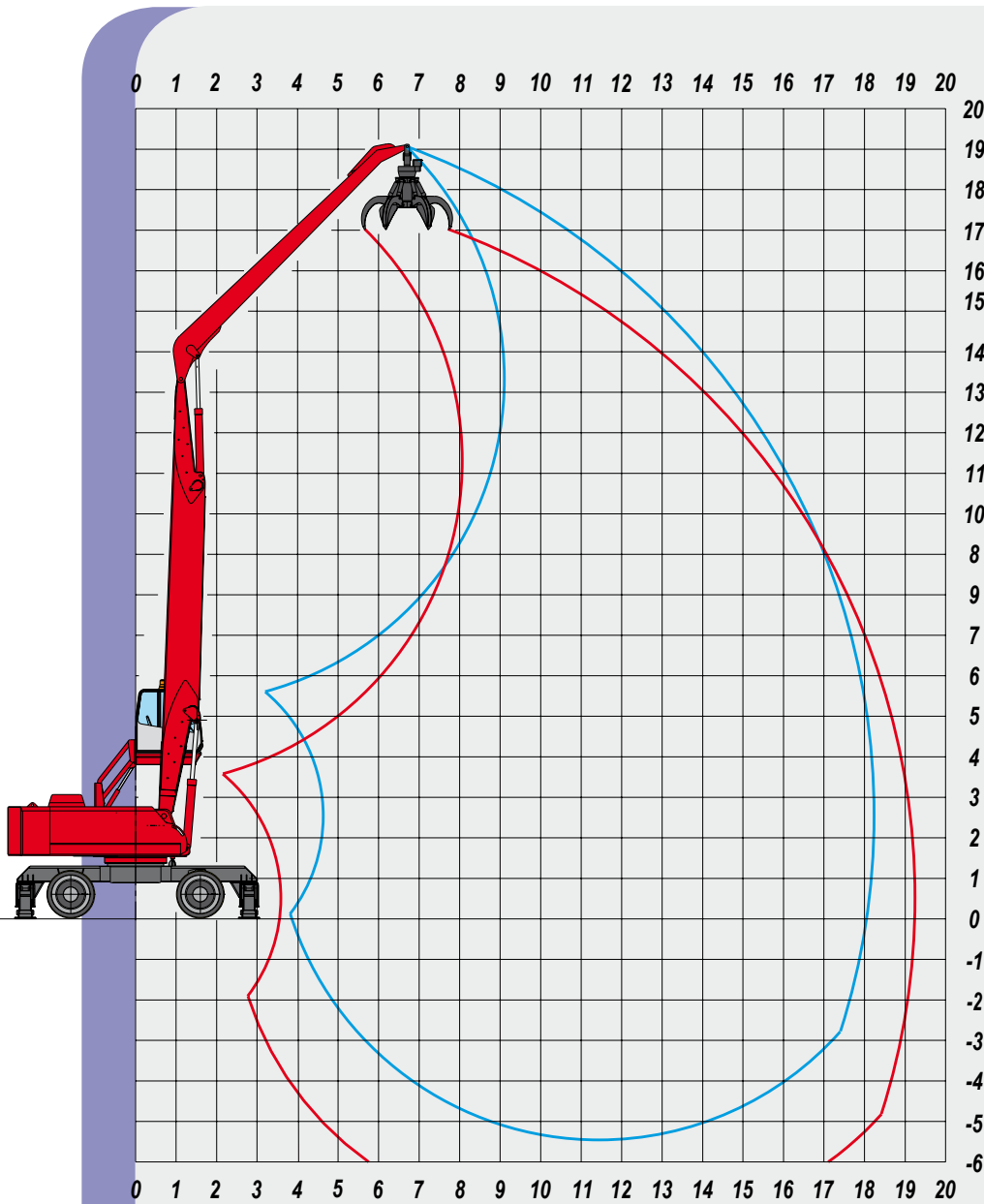


- 100 LS
- 200 ESC
- 300 ESC
- 400 ESC
- 500 ESC**

The new 500 series can stand up to any comparison

518 ESC STRAIGHT BOOM

All technology at operator's service



WORKING DIAGRAM FOR SCRAP HANDLING

**Straight boom
10.80 m**

**Industrial straight
stick
8.00 m**

SUGGESTED ORANGE PEEL

FOR SCRAP

MODEL	SRV 605	SRV 805
OPENING (m)	2,11	2,32
CAPACITY (l)	600	800
WEIGHT WITHOUT ROTATOR (kg)	1490	1600

LIFTING CAPACITIES ON HOOK IN TONS

LIFTING RANGE (m)

HEIGHT METRES	CONFIGURATION	5,5			8,0			10,5			13,0			15,5			18,2		
15.0								7,03*	7,03*	6,12	5,16*	5,16*	4,49						
								7,03*	7,03*	6,12	5,16*	5,16*	4,49						
12.5								7,98*	7,98*	6,80	6,81*	6,22	4,66						
								7,98*	7,98*	6,95	6,81*	6,81*	5,93						
10.0								8,25*	8,25*	6,59	6,96*	6,10	4,57	5,73	4,36	3,27			
								8,25*	8,25*	7,18	6,96*	6,96*	6,06	6,00*	6,00*	5,22			
7.0					10,83*	10,83*	9,43	8,62*	8,27	6,20	7,12*	5,80	4,35	5,58	4,22	3,16			
					10,83*	10,83*	9,43	8,62*	8,62*	7,50	7,12*	7,12*	6,20	6,03*	6,03*	5,25			
5.5		17,97*	17,97*	14,42	12,03*	11,25	8,44	9,09*	7,52	5,64	7,08	5,38	4,04	5,35	3,99	2,99			
		17,97*	17,97*	15,63	12,03*	12,03*	10,47	9,09*	9,09*	7,91	7,31*	7,31*	6,36	6,05*	6,05*	5,27			
2.5		6,88*	6,88*	5,99	12,82*	9,62	7,21	8,94	6,72	5,04	6,62	4,94	3,70	5,09	3,74	2,80	3,97	2,85	2,14
		6,88*	6,88*	5,99	12,82*	12,82*	11,16	9,43*	9,43*	8,20	7,41*	7,41*	6,45	6,01*	6,01*	5,23	4,75*	4,75*	4,13
0.0		4,43*	4,43*	3,85	11,66	8,47	6,36	8,25	6,05	4,54	6,23	4,55	3,41	4,87	3,52	2,64			
		4,43*	4,43*	3,85	12,76*	12,76*	11,10	9,37*	9,37*	8,15	7,28*	7,28*	6,34	5,77*	5,77*	5,02			
-2.5					11,10	7,94	5,96	7,84	5,66	4,24	5,96	4,30	3,22	4,73	3,38	2,54			
					11,54*	11,54*	10,04	8,72*	8,72*	7,58	6,75*	6,75*	5,87	5,19*	5,19*	4,52			

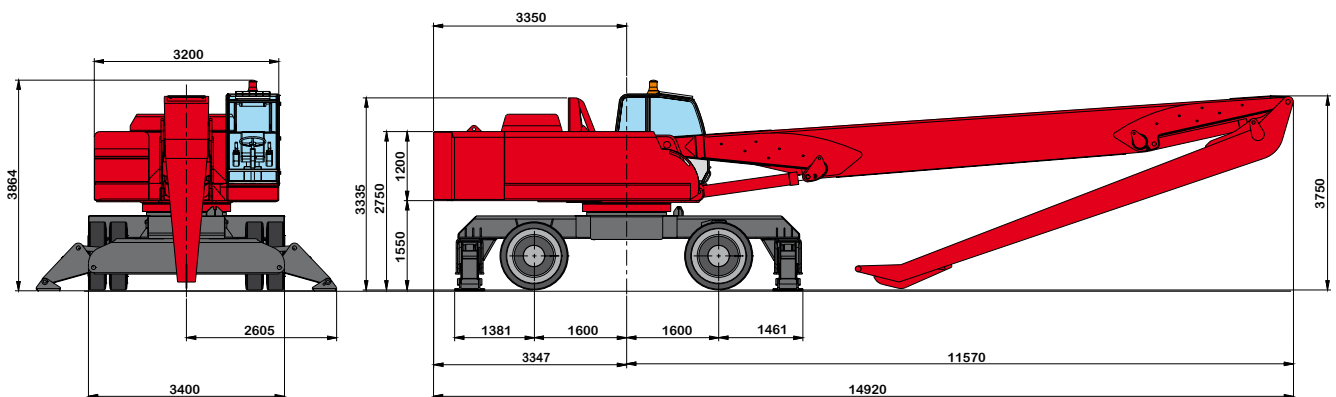
- LIFTING CAPACITIES ON LONGITUDINAL AXIS
- LIFTING CAPACITIES ON 360° WITHOUT SAFETY FACTOR
- LIFTING CAPACITIES ON 360° ACCORDING WITH ISO 10567 STANDARD

* = HYDRAULIC LIMIT

LIFTING CAPACITIES ARE ON HOOK WITHOUT GRABS, MACHINE STATIC, LEVEL SOLID GROUND, WITH AXLE LOCKED.

OPERATING WEIGHT WITH 4 OUTRIGGERS, FULL RUBBER TYRES, STRAIGHT BOOM 10.8 m, INDUSTRIAL STICK 8.0 m, SRV 806 ORANGE PEEL GRAB WITH ROTATOR.

DIMENSIONS

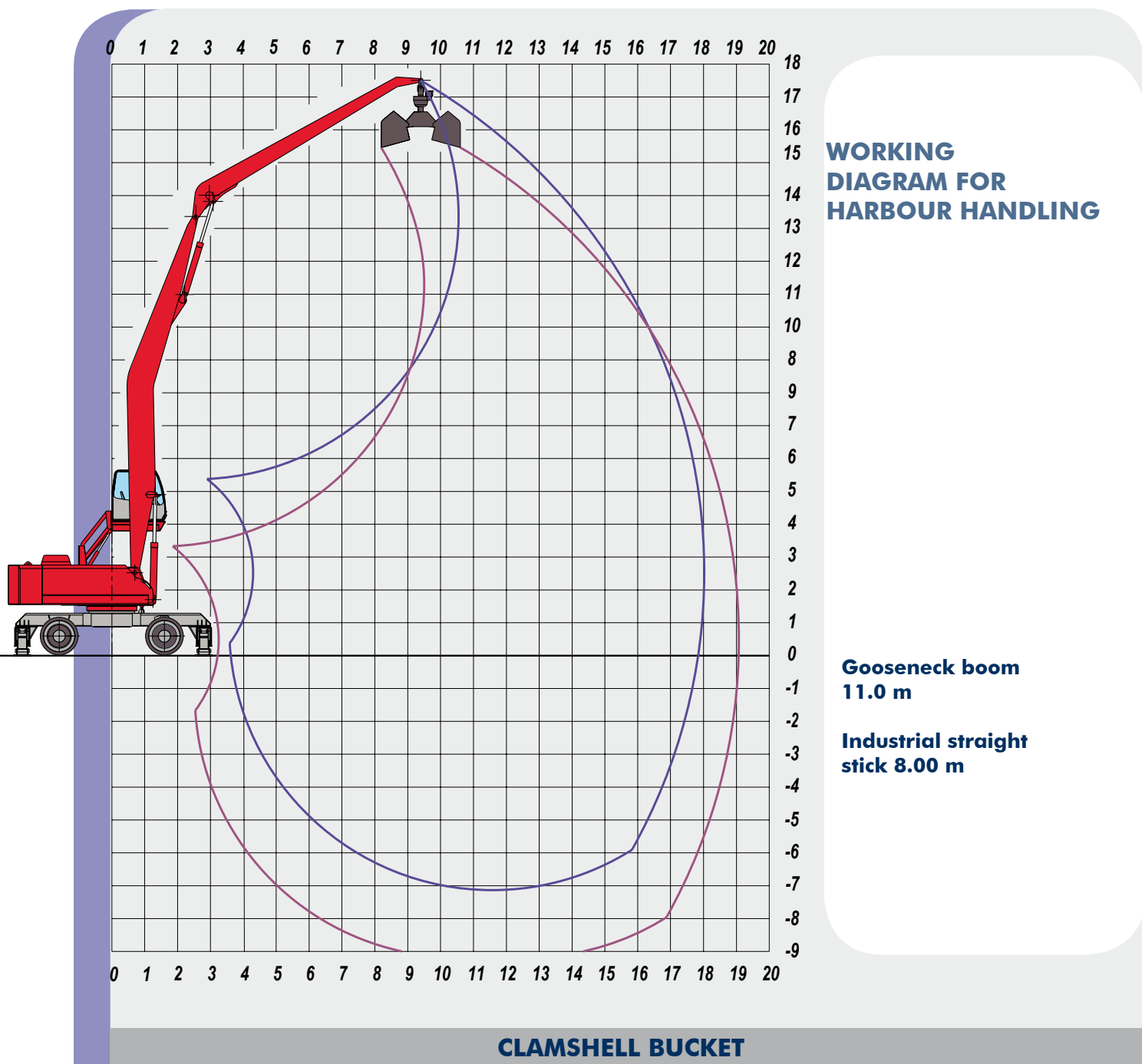


OPERATING WEIGHT 56.000 KG

The new 500 series can stand up to any comparison

518 ESC GOOSENECK BOOM

All technology at operator's service



MODEL	SR 40/1200	SR 40/1500	SR 40/1700	SR 34/1000	SR 34/1300	SR 34/1500
OPENING (m)	2460	2460	2460	2400	2400	2400
CAPACITY (l)	1260	1580	1800	1330	1750	2000
WEIGHT WITHOUT ROTATOR (kg)	1160	1270	1340	1320	1440	1520

LIFTING CAPACITIES ON HOOK IN TONS

LIFTING RANGE (m)

HEIGHT METRES	CONFIGURATION	5,5			8,0			10,5			13,0			15,5			18,0		
15.0								6,14*	6,14*	5,34									
								6,14*	6,14*	5,34									
12.0								6,67*	6,67*	5,81	5,89*	5,89	4,79						
								6,67*	6,67*	5,81	5,89*	5,89*	5,12						
9.0								7,03*	7,03*	6,12	6,05*	6,05*	4,62	5,36*	4,42	3,31			
								7,03*	7,03*	6,12	6,05*	6,05*	5,27	5,36*	5,36*	4,66			
6.0					9,85*	9,85*	8,57	7,70*	7,70*	5,99	6,40*	5,66	4,25	5,51*	4,15	3,11			
					9,85*	9,85*	8,57	7,70*	7,70*	6,70	6,40*	6,40*	5,57	5,51*	5,51*	4,79			
3.0		11,43*	11,43*	9,95	11,45*	10,01	7,51	8,48*	6,95	5,21	6,77	5,08	3,81	5,17	3,81	2,86	4,03	2,90	2,17
		11,43*	11,43*	9,95	11,45*	11,45*	9,96	8,48*	8,48*	7,38	6,80*	6,80*	5,91	5,68*	5,68*	4,95	4,72*	4,72*	4,11
0.0		5,69*	5,69*	4,95	11,61	8,42	6,31	8,25	6,04	4,53	6,21	4,53	3,40	4,84	3,49	2,62			
		5,69*	5,69*	4,95	12,31*	12,31*	10,71	8,97*	8,97*	7,80	7,03*	7,03*	6,12	5,74*	5,74*	5,00			
-3.0		6,48*	6,48*	5,64	10,89	7,73	5,80	7,70	5,51	4,14	5,85	4,18	3,14	4,63	3,28	2,46			
		6,48*	6,48*	5,64	11,95*	11,95*	10,40	8,86*	8,86*	7,71	6,91*	6,91*	6,01	5,51*	5,51*	4,79			
-6.0					10,29*	7,64	5,73	7,54	5,36	4,02	5,74	4,07	3,06	4,60	3,26	2,44			
					10,29*	10,29*	8,95	7,91*	7,91*	6,88	6,14*	6,14*	5,34	4,66*	4,66*	4,05			

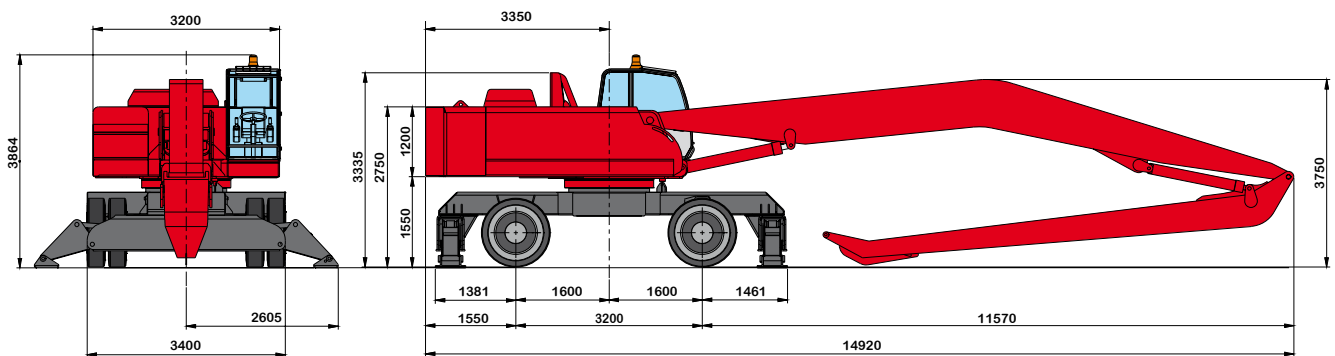
- LIFTING CAPACITIES ON LONGITUDINAL AXIS
- LIFTING CAPACITIES ON 360° WITHOUT SAFETY FACTOR
- LIFTING CAPACITIES ON 360° ACCORDING WITH ISO 10567 STANDARD

* = HYDRAULIC LIMIT

LIFTING CAPACITIES ARE ON HOOK WITHOUT GRABS, MACHINE STATIC, LEVEL SOLID GROUND, WITH AXLE LOCKED.

OPERATING WEIGHT WITH 4 OUTRIGGERS, FULL RUBBER TYRES, GOOSENECK BOOM 11.0 m, INDUSTRIAL STICK 8. m, SR 34/1500 CLAMSHELL BUCKET WITH ROTATOR..

DIMENSIONS

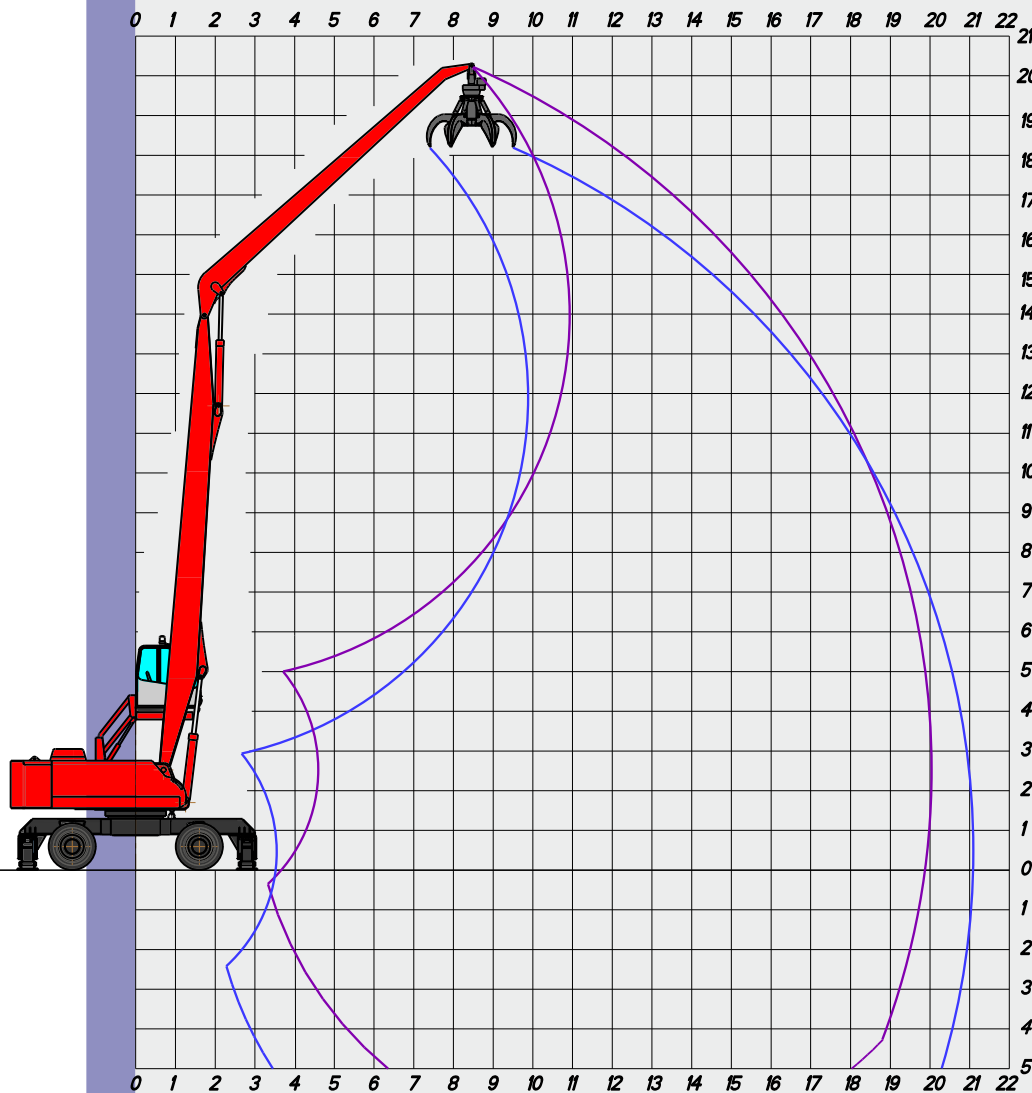


OPERATING WEIGHT 56.000 KG

The new 500 series can stand up to any comparison

520 ESC STRAIGHT BOOM

All technology at operator's service



WORKING DIAGRAM FOR SCRAP HANDLING

**Straight boom
11,5 m**

**Industrial straight
stick 9,20 m**

SUGGESTED ORANGE PEEL GRABS

FOR SCRAP

MODEL	SRV 605	SRV 805
OPENING (m)	2,11	2,32
CAPACITY (l)	600	800
WEIGHT WITHOUT ROTATOR (kg)	1490	1600

LIFTING CAPACITIES ON HOOK IN TONS

LIFTING RANGE (m)

HEIGHT METRES	CONFIGURATION	6,0			9,0			12,0			15,0			18,0			20,0		
18,0								5,12	5,12	4,45									
								5,12*	5,12*	4,45									
15,0								6,54	6,54	5,46	4,77*	4,66	3,49						
								6,54*	6,54*	5,69	4,77*	4,77*	4,15						
12,0								7,17*	7,17*	5,41	5,93*	4,71	3,53						
								7,17*	7,17*	6,23	5,93*	5,93*	5,16						
9,0								7,37*	6,84	5,13	5,99*	4,51	3,38	4,20	3,04	2,28			
								7,37*	7,37*	6,42	5,99*	5,99*	5,21	4,95*	4,95*	4,31			
6,0					10,29*	9,82	7,36	7,72*	6,20	4,65	5,64	4,17	3,13	4,04	2,88	2,16			
					10,29*	10,29*	8,96	7,72*	7,72*	6,71	6,11*	6,11*	5,31	4,94*	4,94*	4,30			
3,0		17,88*	13,94	10,45	11,11*	8,22	6,16	7,36	5,41	4,06	5,21	3,75	2,81	3,82	2,66	2,00	3,14	2,14	1,59
		17,88*	17,88*	15,56	11,11*	11,11*	9,66	8,00*	8,00*	6,96	6,16*	6,16*	5,36	4,85*	4,85*	4,22	4,01*	4,01*	3,49
0,0		5,45*	5,45*	4,74	9,67	6,84	5,13	6,60	4,69	3,52	4,80	3,36	2,52	3,61	2,46	1,85			
		5,45*	5,45*	4,74	11,22*	11,22*	9,76	7,97*	7,97*	6,93	6,01*	6,01*	5,23	4,57*	4,57*	3,98			
-3,0		5,72*	5,72*	4,98	8,88	6,11	4,58	6,12	4,23	3,17	4,52	3,09	2,32	3,48	2,34	1,75			
		5,72*	5,72*	4,98	10,24*	10,24*	8,91	7,40*	7,40*	6,44	5,49*	5,49*	4,78	3,93*	3,93*	3,42			

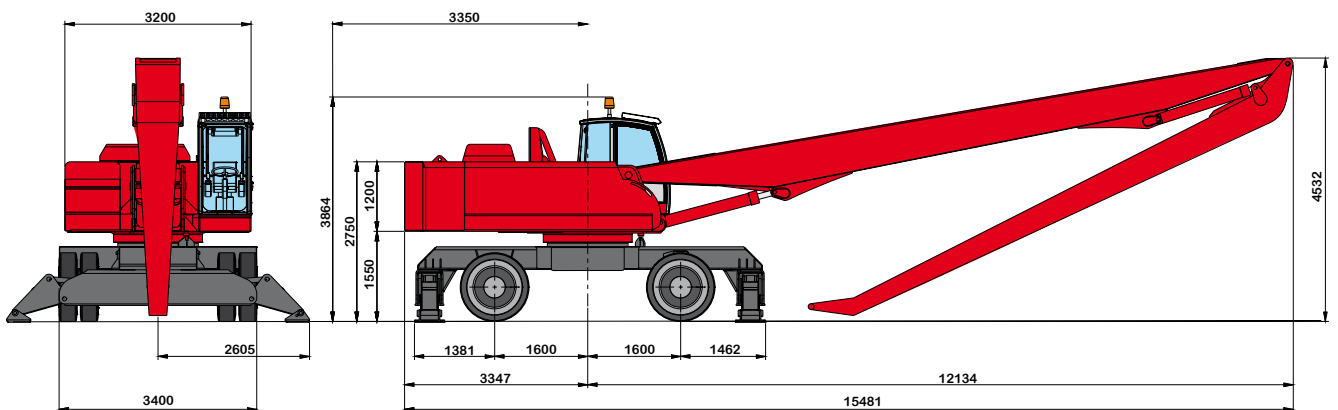
- LIFTING CAPACITIES ON LONGITUDINAL AXIS
- LIFTING CAPACITIES ON 360° WITHOUT SAFETY FACTOR
- LIFTING CAPACITIES ON 360° ACCORDING WITH ISO 10567 STANDARD

* = HYDRAULIC LIMIT

LIFTING CAPACITIES ARE ON HOOK WITHOUT GRABS, MACHINE STATIC, LEVEL SOLID GROUND, WITH AXLE LOCKED.

OPERATING WEIGHT WITH 4 OUTRIGGERS, FULL RUBBER TYRES, STRAIGHT BOOM 11.5 m, INDUSTRIAL STICK 9.2 m, SRV 805 ORANGE PEEL GRAB WITH ROTATOR.

DIMENSIONS



OPERATING WEIGHT 58.000 KG

TECHNICAL DATA

DIESEL ENGINE

TCD 2013 L6 4V – Emission controlled CE 97/68/CE - Step 3 - TIER 3
with electronically controlled injection - 6 cylinders in-line - turbocharged
with intercooler - common rail - direct injection - water cooled - electric
starting system 24 V - displacement 7146 cm³
Power: 231 kW (314 CV) @ 2000 rpm
Max torque: 1189 Nm @ 1450 rpm
Tank capacity: 460 l

HYDRAULIC SYSTEM

Open circuit LOAD SENSING + ELECTRONIC SYNCRON CONTROL.
2 variable displacement axial piston pumps with oil flow adjustment
according to the load requirements and with electronic engine speed
sensing regulation.

Max Flow:	640 l/min		
Max. hydr. pressure:	330 bar		
Hydraulic tank capacity:	420 l		
Hydraulic circuit capacity:	570 litri		
Gear pump for joystick:			
Max pressure:	30 bar	Max. flow:	22 l/min
Gear pump for brakes and steering			
Max pressure:	145 bar	Max. flow:	44 l/min
Gear pump for auxiliary			
Max pressure:	120 bar	Max. flow:	44 litri/min

Hydraulic oil cooling by means aluminium large mesh heat exchange
combined with engine radiator. LOAD SENSING system distributor block with
simultaneous movements independent of the load and without interaction
with synchronised control of all functions.

TRAVEL

Hydrostatic with 4 wheels drive and with an integrated system comprising reduction
gearbox and two hydraulic motors that offer uninterrupted power transmission
over the whole speed range. Travel controlled by two separate foot pedals
(one for each direction).

Travel speed (in both direction):
Travel speed (in both directions) Working speed: da 0 a 6 Km/h
Travel speed: da 0 a 18 Km/h

Differential axles 3.40 mt wide with planetary reduction gears on the hubs.
Braking valve integrated on the hydraulic motor.

STEERING

Hydraulic steering system powered by an independent pump.
Circuit incorporates a pre-calibrated safety valve.
The floating steering axle can be hydraulically locked from the cabin in any
position.

BREAKES

SERVICE BRAKES: wet, maintenance free multidisk brakes into rear axle
via foot pedal.
PARKING AND EMERGENCY BRAKES: multidisk spring applied/pressure
released parking brakes integrated into gear box.

TYRES

8 full rubber tyres "SUPERELASTIC" front and rear 14.00 x 24

BOOMS

For dimensions see each model.

SLEWING

Extra large 3,00 m upperstructure mounted on a high resistance double row ball
bearing ring with internal teeth. Unlimited rotation in both directions by means
of 2 axial piston hydraulic motors with integrated control valve, fitted to double
stage reduction gear with oil bath gears. Anti-shock valves protect the system.
Max slewing speed: 8 rpm
Overall rotating radius: 3,40 m

OPERATOR'S CAB

Hydraulically operated raising driver's cab mounted on a parallelogram
linkage (vertical raising on request) installed on silent block with large
windows of tinted heat resistant safety glass; front sliding window, and
lateral opening window. Winter heating and summer ventilation installed as
standard. Air conditioning on request.

Radio preset – Double windscreen wiper with washer.
"GRAN COMFORT" operator's seat with shock absorbing suspension,
headrest, lumbar support, belt winder, electric seat heating device and
armrests adjustable height and angle. Many possibilities of adjustment
according to operator's weight and size with joysticks incorporated in its
arms.

AUTO-IDLE electronic accelerator with two automatic preselected rpm.
The instrumentation includes: Engine speed indicator, fuel level, water
thermometer.

Display shows: hour counter, hydraulic oil temperature, Volt, oil engine
pressure, fuel consumption, engine diagnostics, and maintenance
program.

Warning lights showing: air cleaner and oil filter clogging, park brake, low
fuel, brakes failure, lights, hydraulic oil low level.

HYDRAULIC CONTROLS

n° 2 hydraulically controlled joysticks to carry out four operations each with
electric pushbuttons incorporated
Electro switch for grab rotator and for dipper telescopic extension (if installed)
Electro switch for outriggers and/or front blade.
Electro switch for magnet (if installed)
Electro hydraulic devices for controlling gear box, parking brakes, hydraulic
raising of the cab, front axle oscillation lock.

SOUND LEVEL

SOUND LEVELS (EEC Directive 2000/14/CE)
Inside cab LpA 79 dB (A)

ELECTROMAGNETIC COMPATIBILITY

In accordance with EEC Directive 89/336

OVERLOAD WARNING DEVICE

Dir. 98/37/CE:
In accordance with EEC DIRECTIVES 98/37 this device provides to check
the crane stability while loading in accordance with loads and distances
(as standard).
Optical warning advise danger and conditions locking movement when
the stability limits are reached. Visualising of the lifting charge and the
liftable charge limit, in each position.



Viale delle industrie, 9
45100 ROVIGO - ITALY
phone +39 0425 474833 r.a.
fax +39 0425 475548
www.solmec.it
solmec@solmec.it