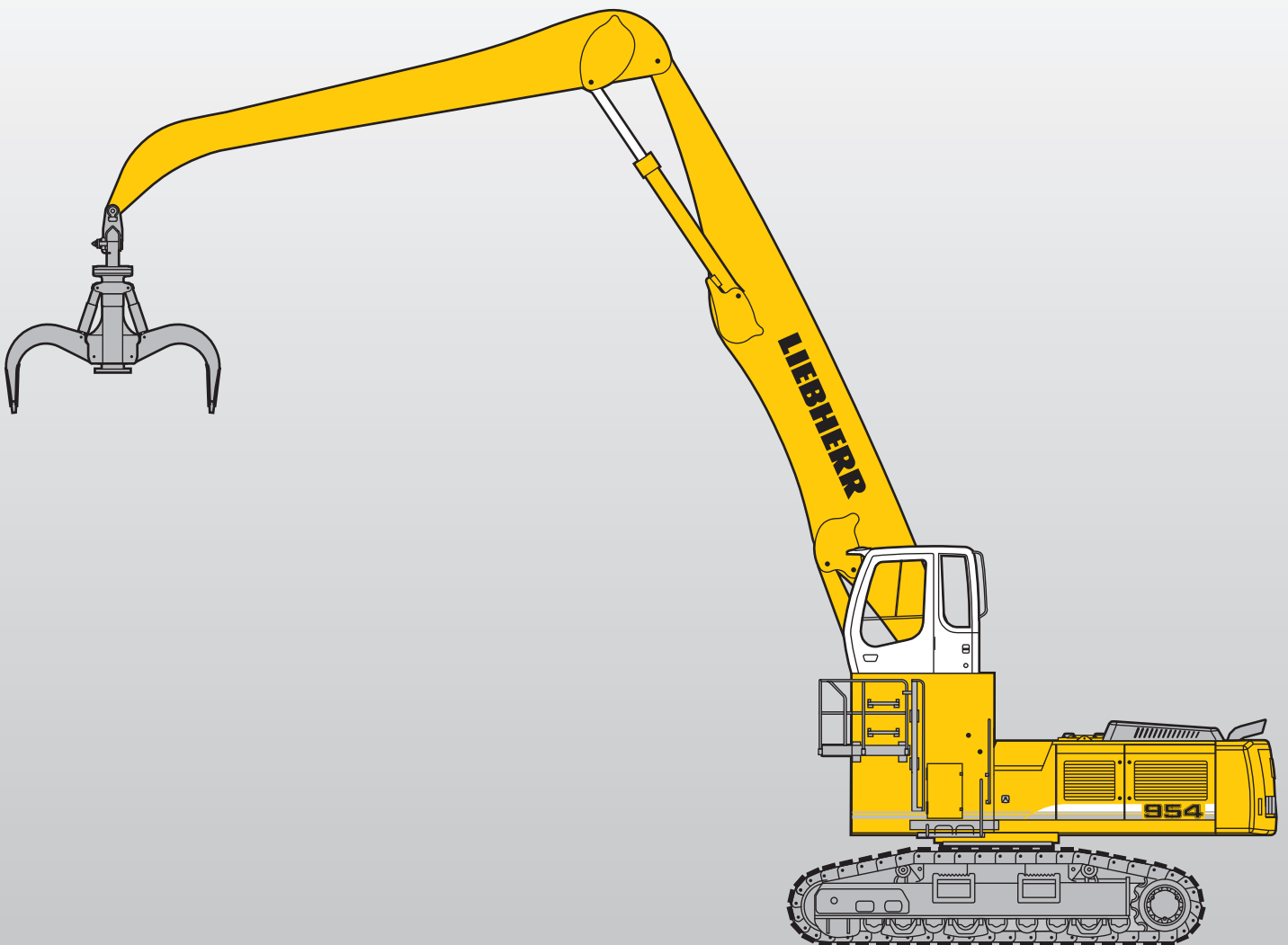


Machine for Industrial Applications R 954 C

Litronic®

Operating Weight: 63,500 – 72,200 kg
Engine Output: 240 kW / 326 HP



LIEBHERR

Technical Data



Engine

| | |
|---------------------|--|
| Rating per ISO 9249 | 240 kW (326 HP) at 1800 RPM |
| Model | Liebherr D 936 L |
| Type | 6 cylinder in-line |
| Bore/Stroke | 122/150 mm |
| Displacement | 10,5 l |
| Engine operation | 4-stroke diesel unit pump system turbo-charged and after-cooled |
| Cooling | water-cooled and integrated motor oil cooler |
| Air cleaner | dry-type air cleaner with pre-cleaner, primary and safety elements, automatic dust discharge |
| Fuel tank | 700 l |
| Standard | sensor controlled engine idling |
| Electrical system | |
| Voltage | 24 V |
| Batteries | 2 x 170 Ah/12 V |
| Starter | 24 V/7,8 kW |
| Alternator | three phase current 28 V/80 A |



Hydraulic System

| | |
|--|---|
| Hydraulic pump for attachment and travel drive | two Liebherr variable flow, swash plate pumps |
| Max. flow | 2 x 350 l/min. |
| Max. pressure | 350 bar |
| Pump regulation | electro-hydraulic with electronic engine speed sensing regulation, pressure compensation, flow compensation, automatic oil flow optimizer |
| Hydraulic pump for swing drive | reversible, variable flow, swash plate pump, closed-loop circuit |
| Max. flow | 211 l/min. |
| Max. pressure | 384 bar |
| Hydraulic tank | 440 l |
| Hydraulic system | 790 l |
| Hydraulic oil filter | 2 full flow filters in return line with integrated fine filter area (5 µm) |
| Hydraulic oil cooler | cooler unit, consisting of radiator for engine coolant with after-cooler core, sandwiched with cooler for hydraulic fluid and fuel with hydrostatically controlled fan drives |
| MODE selection | adjustment of machine performance and the hydraulics via a mode selector to match application |
| ECO | for especially economical and environmentally friendly operation |
| POWER | for maximum digging power and heavy duty jobs |
| LIFT | for lifting |
| FINE | for precision work and lifting through very sensitive movements |
| RPM adjustment | stepless adjustment of engine output via the rpm at each selected mode |



Hydraulic Controls

| | |
|----------------------|--|
| Power distribution | via control valves in single block with integrated safety valves |
| Flow summation | to boom and stick |
| Closed-loop circuit | for uppercarriage swing drive |
| Servo circuit | |
| Attachment and swing | proportional via joystick levers |
| Travel | proportional via foot pedal |
| Additional functions | via foot pedals or joystick push buttons |



Swing Drive

| | |
|---------------|--|
| Drive by | Liebherr swash plate motor with integrated brake valves |
| Transmission | Liebherr compact planetary reduction gear |
| Swing ring | Liebherr, sealed single race ball bearing swing ring, internal teeth |
| Swing speed | 0 – 6,0 RPM stepless |
| Swing torque | 154 kNm |
| Holding brake | wet multi-disc (spring applied, pressure released) |
| Option | pedal controlled positioning brake |



Operator's Cab

| | |
|------------------|--|
| Cab | resiliently mounted, sound insulated, tinted windows, front window stores overhead, door with sliding window |
| Operator's seat | fully adjustable, shockabsorbing suspension, adjustable to operator's weight and size, 6-way adjustable Liebherr seat |
| Joysticks | integrated into adjustable consoles |
| Monitoring | menu driven query of current operating conditions via the LCD display. Automatic monitoring, display, warning (acoustical and optical signal) and saving machine data, for example, engine overheating, low engine oil pressure or low hydraulic oil level |
| Air conditioning | standard air conditioning, combined cooler/heater, additional dust filter in fresh air/recirculated |
| Noise emission | |
| ISO 6396 | L_{pA} (inside cab) = 77 dB(A) |
| 2000/14/EC | L_{WA} (surround noise) = 105 dB(A) |



Undercarriage

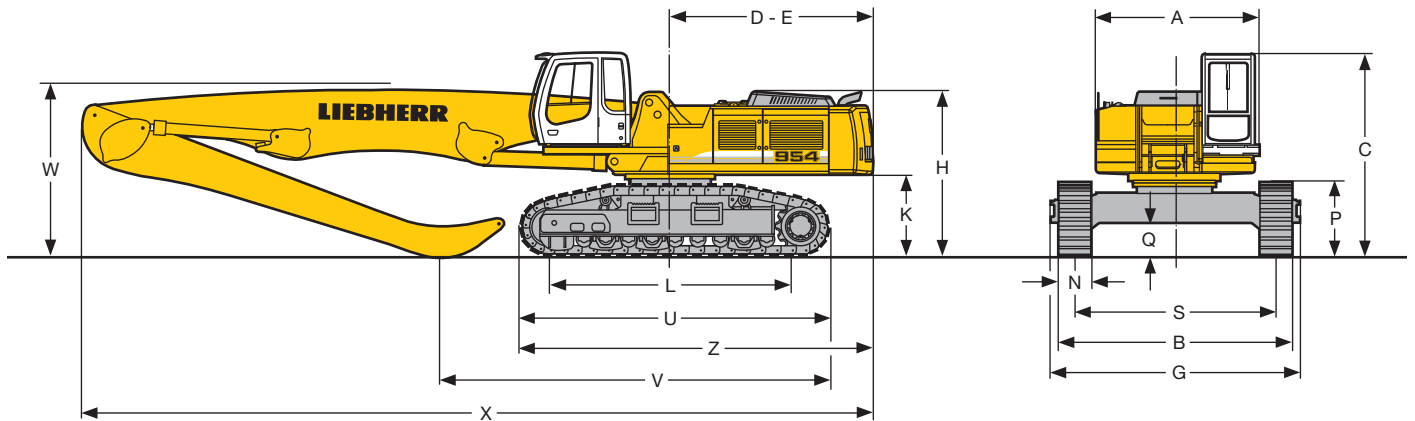
| | |
|-------------------------------|--|
| Versions | |
| HD-W | heavy duty, wide gauge |
| EW | special duty, extra wide gauge |
| Drive | Liebherr swash plate motors with integrated brake valves on both sides |
| Transmission | Liebherr planetary reduction gears |
| Travel speed | HD-W: low range – 3,4 km/h high range – 5,0 km/h EW: low range – 2,7 km/h high range – 3,8 km/h |
| Drawbar pull max. | HD-W: 429 kN EW: 553 kN |
| Track components | HD-W: D 7 G, maintenance-free EW: D 8 K, maintenance-free |
| Track rollers/Carrier rollers | HD-W: 10/2 EW: 9/2 |
| Tracks | sealed and greased |
| Track pads | HD-W: triple grouser EW: double grouser |
| Digging locks | wet multi-discs (spring applied, pressure released) |
| Brake valves | integrated into travel motor |



Attachment

| | |
|---------------------|---|
| Type | high-strength steel plates at highly-stressed points for the toughest requirements. Complex and stable mountings of attachment and cylinders. Unrivalled strength, even at high loads |
| Hydraulic cylinders | Liebherr cylinders with special seal system. Shock absorption |
| Pivots | sealed, low maintenance |
| Lubrication | Liebherr semi-automatic central lubrication system |

Dimensions



| | HD-W | mm | EW | mm |
|---|-------------|------|-----------|------|
| A | | 3070 | | 3070 |
| C | | 3660 | | 3805 |
| D | | 3825 | | 3825 |
| E | | 3825 | | 3825 |
| H | | 2930 | | 3075 |
| K | | 1345 | | 1490 |
| L | | 4400 | | 4565 |
| P | | 1170 | | 1355 |
| Q | | 477 | | 604 |
| S | | 3400 | | 3800 |
| U | | 5380 | | 5680 |
| N | 600 | 750 | 600 | 750 |
| B | 4012 | 4150 | 4490 | 4550 |
| G | 4208 | 4208 | 4606 | 4606 |
| Z | | 6500 | | 6675 |

E = Tail radius

Industrial-Type Straight Boom 10,50 m and Industrial Stick with Undercarriage

| | m | 7,80 | HD-W | EW |
|---|----|-------|------|-------|
| V | mm | 7200 | | 7050 |
| W | mm | 3550 | | 3300 |
| X | mm | 14950 | | 14950 |

Industrial-Type Straight Boom 11,50 m and Industrial Stick with Undercarriage

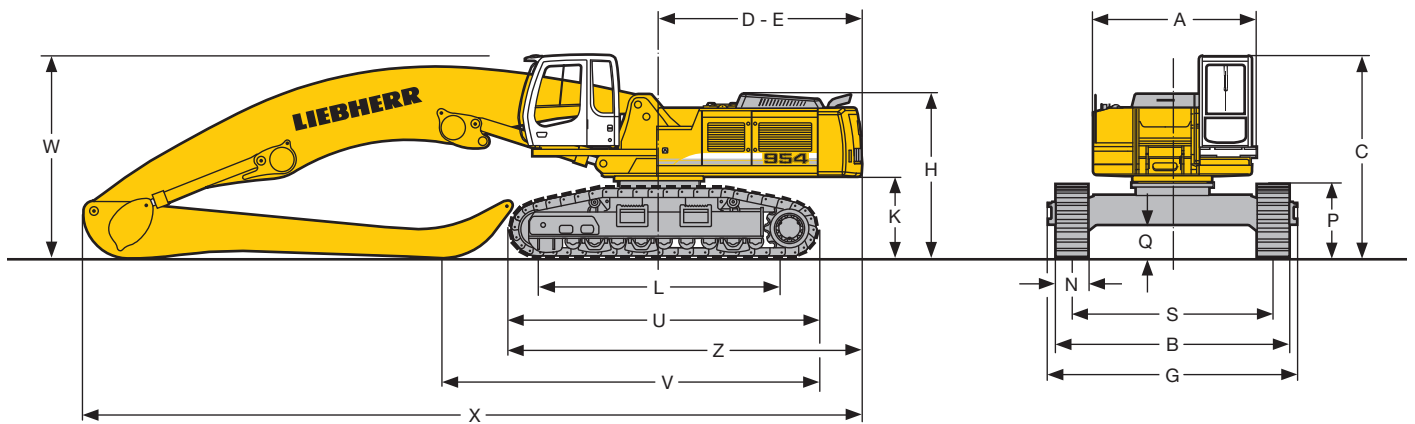
| | m | 7,80 | 9,00 | EW |
|---|----|-------|------|-------|
| V | mm | 8350 | | 7250 |
| W | mm | 3550 | | 4050 |
| X | mm | 15950 | | 15950 |

Industrial-Type Gooseneck Boom 10,50 m and Industrial Stick with Undercarriage

| | m | 7,80 | HD-W | EW |
|---|----|-------|------|-------|
| V | mm | 6900 | | 7050 |
| W | mm | 3850 | | 4000 |
| X | mm | 14850 | | 14850 |

Industrial-Type Gooseneck Boom 11,50 m and Industrial Stick with Undercarriage

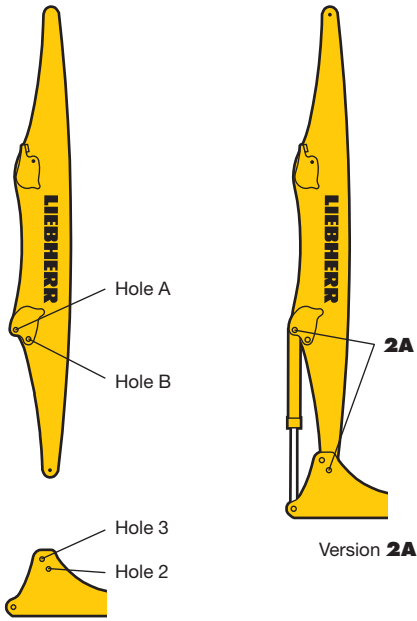
| | m | 7,80 | 9,00 | EW |
|---|----|-------|------|-------|
| V | mm | 8050 | | 6900 |
| W | mm | 4200 | | 4200 |
| X | mm | 15800 | | 15800 |



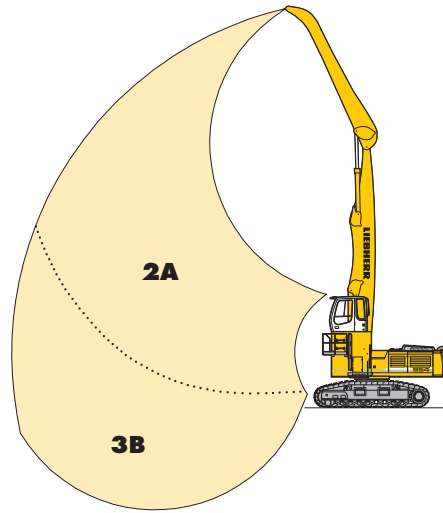
These dimensions are stated with cab carrier. This assembly is only valid for transportation.

VarioLiftPlus

Variable Boom Mounting Positions for Optimized Lift Capacities



with **the same** working range



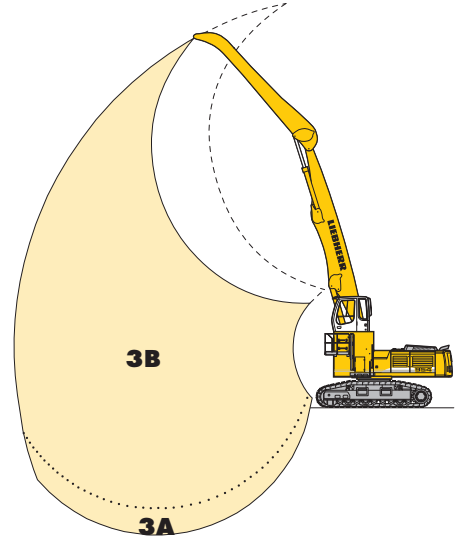
Kinematic variant 2A:

Increased lift capacities above ground level

Kinematic variant 3B:

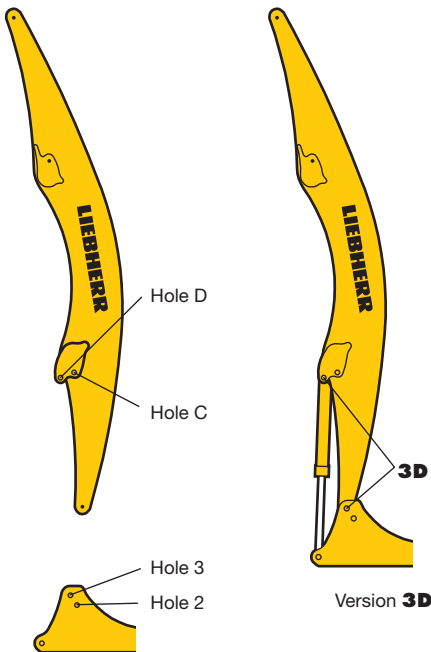
Increased lift capacities below ground level and when working at large outreach

with a **different** working range

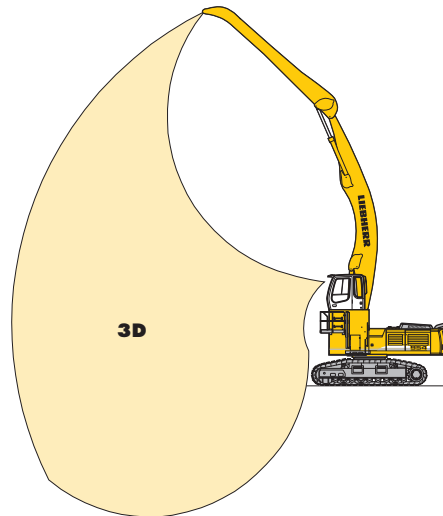


Kinematic variant 3A:

Altered range curve with additional reach depth, e.g. for unloading from ships

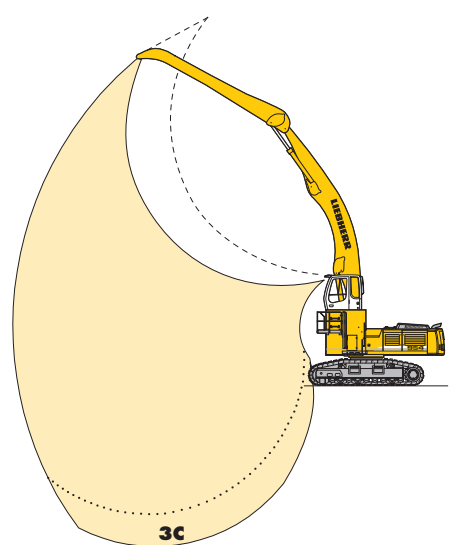


with a **different** working range



Kinematic variant 3D:

Increased lift capacities below ground level and when working at large outreach

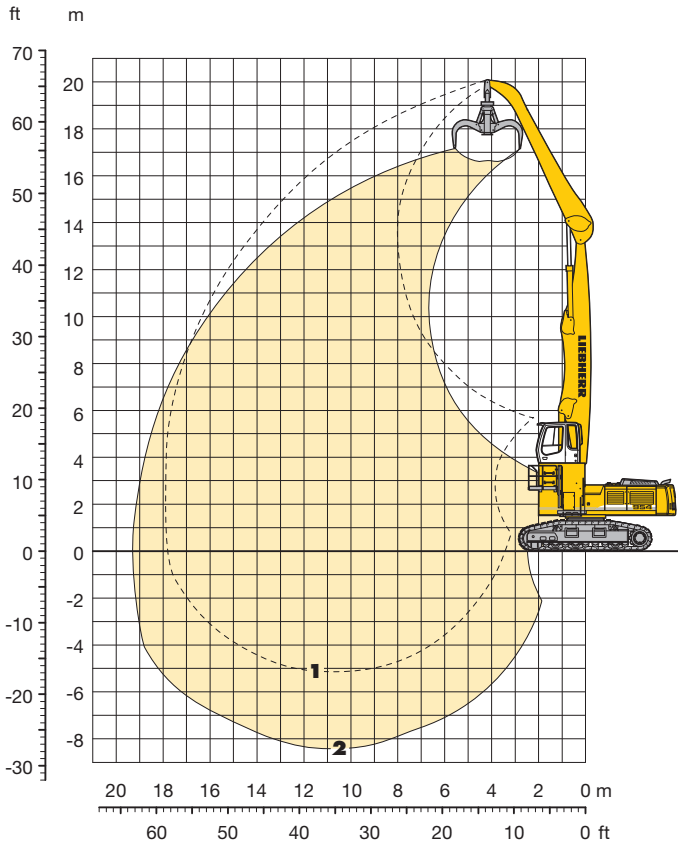


Kinematic variant 3C:

Altered range curve with additional reach depth, e.g. for unloading from ships

Industrial Attachment

with Industrial-Type Straight Boom 10,50 m



Attachment Envelope

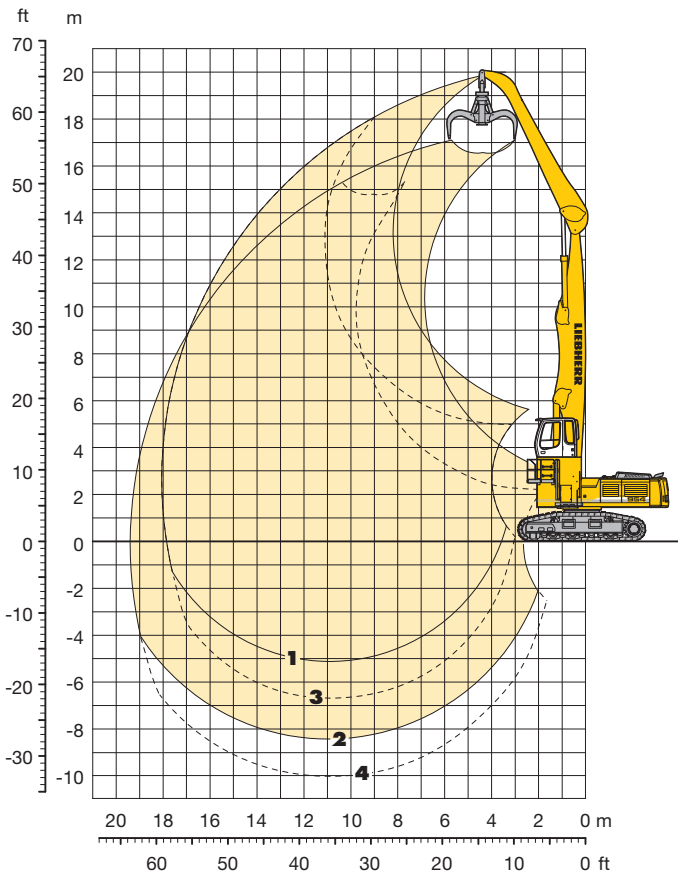
Kinematic variant 2A

- 1** with industrial stick 7,80 m
- 2** with industrial stick 7,80 m and grapple model 72 C

Operating Weight and Ground Pressure

Operating weight includes basic machine with rigid cab elevation 2,00 m, counterweight 14,5 t, industrial-type straight boom 10,50 m, industrial stick 7,80 m and grapple model 72 C with 5 semi-closed tines 1,20 m³.

| Undercarriage | | HD-W | | EW | |
|-----------------|--------------------|-------|-------|-------|-------|
| Pad width | mm | 600 | 750 | 600 | 750 |
| Weight | kg | 63500 | 64900 | 69900 | 70900 |
| Ground pressure | kg/cm ² | 1,20 | 0,98 | 1,28 | 1,04 |



Attachment Envelope

Kinematic variants 3A/3B

- 1** with industrial stick 7,80 m (3B)
- 2** with industrial stick 7,80 m and grapple model 72 C (3B)
- 3** with industrial stick 7,80 m (3A)
- 4** with industrial stick 7,80 m and grapple model 72 C (3A)

Operating Weight and Ground Pressure

Operating weight includes basic machine with rigid cab elevation 2,00 m, counterweight 14,5 t, industrial-type straight boom 10,50 m, industrial stick 7,80 m and grapple model 72 C with 5 semi-closed tines 1,20 m³.

| Undercarriage | | HD-W | | EW | |
|-----------------|--------------------|-------|-------|-------|-------|
| Pad width | mm | 600 | 750 | 600 | 750 |
| Weight | kg | 63500 | 64900 | 69900 | 70900 |
| Ground pressure | kg/cm ² | 1,20 | 0,98 | 1,28 | 1,04 |

Lift Capacities

with Industrial-Type Straight Boom 10,50 m

Industrial Stick 7,80 m (Variant 2A)

| ↑ m | Under-carriage | 4,5 m | | 6,0 m | | 7,5 m | | 9,0 m | | 10,5 m | | 12,0 m | | 13,5 m | | 15,0 m | | 16,5 m | | 18,0 m | | 19,5 m | | m | | |
|--------|----------------|-------|-------|-------|-------|-------|-------|-------|-------|--------|-------|--------|-------|--------|------|--------|------|--------|------|--------|--|--------|--|-------|-------|-------|
| | | | | | | | | | | | | | | | | | | | | | | | | | | |
| 19,5 | EW HD-W | | | | | | | | | | | | | | | | | | | | | | | 14,7* | 14,7* | 5,55 |
| 18,0 | EW HD-W | | | | | 14,1* | 14,1* | | | | | | | | | | | | | | | | | 15,5* | 15,5* | 8,99 |
| 16,5 | EW HD-W | | | | | 15,4* | 15,4* | 13,9* | 13,9* | 11,6* | 11,6* | | | | | | | | | | | | | 11,3* | 11,3* | 11,21 |
| 15,0 | EW HD-W | | | | | 15,4* | 15,4* | 13,9* | 13,9* | 11,6* | 11,6* | 10,8 | 10,9* | | | | | | | | | | | 9,8* | 9,8* | 12,87 |
| 13,5 | EW HD-W | | | | | | | 13,9* | 13,9* | 12,2* | 12,2* | 10,8* | 10,8* | 8,7 | 9,6* | | | | | | | | | 9,0* | 9,0* | 14,18 |
| 12,0 | EW HD-W | | | | | | | 13,8* | 13,8* | 12,1* | 12,1* | 10,7* | 10,7* | 8,8 | 9,6* | 7,0 | 8,1 | | | | | | | 8,7 | 8,7 | 15,23 |
| 10,5 | EW HD-W | | | | | | | 13,8* | 13,8* | 11,5 | 12,1* | 10,8* | 10,8* | 8,8 | 9,6* | 7,1 | 8,2 | | | | | | | 7,0 | 7,1 | 16,07 |
| 9,0 | EW HD-W | | | | | 16,5* | 16,5* | 14,1* | 14,1* | 12,3* | 12,3* | 10,7 | 10,8* | 8,6 | 9,6* | 7,0 | 8,1 | 5,7 | 6,7 | | | | | 6,7 | 6,7 | 16,73 |
| 7,5 | EW HD-W | | | 18,1* | 18,1* | 17,1* | 17,1* | 14,4* | 14,4* | 12,4* | 12,4* | 10,3 | 10,9* | 8,4 | 9,6* | 6,9 | 8,0 | 5,7 | 6,6 | | | | | 5,5 | 5,5 | 17,23 |
| 6,0 | EW HD-W | 19,5* | 19,5* | 22,0* | 22,0* | 17,7* | 17,7* | 14,7* | 14,7* | 12,6* | 12,6* | 9,9 | 10,9* | 8,1 | 9,3 | 6,7 | 7,8 | 5,6 | 6,5 | | | | | 4,9 | 4,9 | 17,59 |
| 4,5 | EW HD-W | 18,4* | 18,4* | 21,9* | 21,9* | 17,4 | 17,6* | 12,9 | 14,7* | 9,9 | 12,5 | 7,9 | 10,0 | 6,3 | 8,1 | 5,2 | 6,7 | 4,2 | 5,5 | | | | | 3,6 | 3,6 | 17,81 |
| 3,0 | EW HD-W | 31,3* | 31,3* | 23,0* | 23,0* | 18,1* | 18,1* | 14,9 | 14,9* | 11,7 | 12,6* | 9,5 | 10,9* | 7,8 | 9,0 | 6,5 | 7,6 | 5,4 | 6,4 | | | | | 4,7 | 4,7 | 17,91 |
| 1,5 | EW HD-W | 31,2* | 31,2* | 22,6 | 22,9* | 15,9 | 18,1* | 11,9 | 14,9* | 9,3 | 11,8 | 7,4 | 9,5 | 6,0 | 7,8 | 4,9 | 6,5 | 4,1 | 5,4 | | | | | 3,4 | 3,4 | 17,87 |
| 0 | EW HD-W | 5,5* | 5,5* | 23,3* | 23,3* | 18,2 | 18,3* | 13,9 | 14,9* | 11,0 | 12,6* | 9,0 | 10,4 | 7,4 | 8,7 | 6,3 | 7,3 | 5,3 | 6,2 | | | | | 4,6 | 5,3* | 17,91 |
| -1,5 | EW HD-W | 6,3* | 6,3* | 19,7 | 23,3* | 14,3 | 18,3* | 10,9 | 14,1 | 8,6 | 11,1 | 7,0 | 9,0 | 5,7 | 7,5 | 4,7 | 6,2 | 3,9 | 5,3 | | | | | 3,3 | 4,5 | 17,87 |
| -3,0 | EW HD-W | 3,1* | 3,1* | 12,2* | 12,2* | 16,7 | 17,8* | 13,0 | 14,6* | 10,4 | 12,2 | 8,5 | 10,0 | 7,1 | 8,4 | 6,0 | 7,1 | 5,2 | 6,1 | | | | | 4,5 | 4,8* | 17,71 |
| -4,5 | EW HD-W | 3,2* | 3,2* | 13,0* | 13,0* | 12,9 | 17,1 | 10,0 | 13,2 | 8,0 | 10,5 | 6,5 | 8,6 | 5,4 | 7,1 | 4,5 | 6,0 | 3,8 | 5,1 | | | | | 3,3 | 4,5 | 17,71 |
| -6,0 | EW HD-W | 3,6* | 3,6* | 9,3* | 9,3* | 15,7 | 16,8* | 12,2 | 13,9* | 9,9 | 11,6 | 8,2 | 9,6 | 6,9 | 8,1 | 5,9 | 6,9 | 5,1 | 5,7* | | | | | 4,2* | 4,2* | 17,35 |
| -7,5 | EW HD-W | 3,5* | 3,5* | 9,4* | 9,4* | 11,8 | 16,0 | 9,3 | 12,4 | 7,5 | 9,9 | 6,2 | 8,2 | 5,1 | 6,9 | 4,3 | 5,8 | 3,7 | 5,0 | | | | | 3,2 | 3,2 | 17,35 |
| | EW HD-W | 4,8* | 4,8* | 9,2* | 9,2* | 15,0* | 15,0* | 11,7 | 12,7* | 9,5 | 10,7* | 7,9 | 9,1* | 6,7 | 7,6* | 5,7 | 6,3* | 4,8* | 4,8* | | | | | 3,6* | 3,6* | 16,12 |
| | EW HD-W | 4,7* | 4,7* | 10,0* | 10,0* | 12,7* | 12,7* | 11,0* | 11,0* | 9,2 | 9,4* | 7,7 | 7,9* | 6,6 | 6,6* | 5,2* | 5,2* | 4,1 | 5,3* | | | | | 4,0* | 4,0* | 13,86 |
| | EW HD-W | | | | | 10,2* | 10,2* | 8,3 | 9,1* | 6,7 | 7,8* | 5,6 | 6,6* | 4,8 | 5,3* | | | | | | | | | 3,7 | 3,9* | 13,86 |
| | EW HD-W | | | | | | | | | | | | | | | | | | | | | | | 4,4 | 4,6* | |

Industrial Stick 7,80 m (Variant 3A)

| ↑ m | Under-carriage | 4,5 m | | 6,0 m | | 7,5 m | | 9,0 m | | 10,5 m | | 12,0 m | | 13,5 m | | 15,0 m | | 16,5 m | | 18,0 m | | 19,5 m | | m | | |
|--------|----------------|-------|-------|-------|-------|-------|-------|-------|-------|--------|-------|--------|-------|--------|-------|--------|-----|--------|-----|--------|-----|--------|--|-------|-------|-------|
| | | | | | | | | | | | | | | | | | | | | | | | | | | |
| 19,5 | EW HD-W | | | | | | | | | | | | | | | | | | | | | | | 11,0* | 11,0* | 9,52 |
| 18,0 | EW HD-W | | | | | | | | | | | | | | | | | | | | | | | 11,2* | 11,2* | 11,64 |
| 16,5 | EW HD-W | | | | | | | | | 11,5* | 11,5* | | | | | | | | | | | | | 9,7* | 9,7* | 13,24 |
| 15,0 | EW HD-W | | | | | | | | | 11,0 | 11,5* | 10,2* | 10,2* | | | | | | | | | | | 8,8 | 8,9* | 14,51 |
| 13,5 | EW HD-W | | | | | | | | | | | 10,1* | 10,1* | 8,7 | 9,4* | | | | | | | | | 7,1 | 9,0 | 15,52 |
| 12,0 | EW HD-W | | | | | | | | | | | 10,0* | 10,0* | 8,9 | 9,3* | 7,0 | 8,1 | | | | | | | 5,9 | 7,5 | 16,33 |
| 10,5 | EW HD-W | | | | | | | | | | | 10,1* | 10,1* | 8,9 | 10,1* | 7,0 | 8,1 | | | | | | | 5,8 | 6,8 | 16,96 |
| 9,0 | EW HD-W | | | | | | | | | 11,4* | 11,4* | 10,3* | 10,3* | 8,5 | 9,4* | 7,0 | 8,0 | 5,7 | 6,6 | | | | | 4,5 | 5,8 | 17,44 |
| 7,5 | EW HD-W | | | | | | | 13,3* | 13,3* | 11,8* | 11,8* | 10,2 | 10,5* | 8,3 | 9,5 | 6,8 | 7,9 | 5,6 | 6,6 | | | | | 5,0 | 5,8 | 17,78 |
| 6,0 | EW HD-W | | | | | 16,6* | 16,6* | 14,0* | 14,0* | 12,2 | 12,2* | 9,8 | 10,8* | 8,0 | 9,2 | 6,6 | 7,7 | 5,5 | 6,4 | | | | | 3,5 | 4,7 | 17,98 |
| 4,5 | EW HD-W | 31,0* | 31,0* | 22,5* | 22,5* | 17,7* | 17,7* | 14,6 | 14,7* | 11,5 | 12,6* | 9,3 | 10,8 | 7,6 | 8,9 | 6,4 | 7,4 | 5,4 | 6,3 | | | | | 4,5 | 5,4 | 18,06 |
| 3,0 | EW HD-W | 30,6* | 30,6* | 21,9 | 22,3* | 15,5 | 17,6* | 11,6 | 14,7* | 9,1 | 11,6 | 7,3 | 9,3 | 5,9 | 7,7 | 4,8 | 6,4 | 4,0 | 5,3 | | | | | 3,3 | 4,5 | 18,01 |
| 1,5 | EW HD-W | 3,8* | 3,8* | 23,0* | 23,0* | 17,7 | 18,7* | 13,6 | 15,3* | 10,8 | 12,6 | 8,8 | 10,3 | 7,3 | 8,5 | 6,1 | 7,2 | 5,2 | 6,2 | 4,5 | 5,3 | | | 4,4 | 5,3 | 17,82 |
| 0 | EW HD-W | 4,2* | 4,2* | 19,0 | 23,9* | 13,8 | 18,2 | 10,6 | 13,8 | 8,4 | 10,9 | 6,8 | 8,9 | 5,6 | 7,3 | 4,6 | 6,1 | 3,9 | 5,2 | 3,2 | 4,4 | | | 3,2 | 4,4 | 17,51 |
| | EW HD-W | 2,6* | 2,6* | 10,1* | 10,1* | 16,3 | 19,2* | 12,6 | 14,9 | 10,2 | 11,9 | 8,4 | 9,8 | 7,0 | 8,2 | 5,9 | 7,0 | 5,1 | 6,0 | 4,4 | 5,2 | | | 4,4 | 5,2 | 17,05 |
| | EW HD-W | 3,4* | 3,4* | 8,4* | 8,4* | 15,3 | 18,3 | 11,9 | 14,2 | 9,7 | 11,4 | 8,0 | 9,4 | 6,7 | 8,0 | 5,8 | 6,8 | 5,0 | 5,9 | 3,2 | 4,4 | | | 3,2 | 4,3 | 15,96 |
| | EW HD-W | 3,3* | 3,3* | 8,5* | 8,5* | 11,5 | 15,6 | 9,0 | 12,1 | 7,3 | 9,7 | 6,0 | 8,0 | 5,0 | 6,7 | 4,2 | 5,7 | 3,6 | 4,9 | | | | | 5,2 | 5,7* | 13,45 |
| | EW HD-W | 4,7* | 4,7* | 8,7* | 8,7* | 14,7 | 16,9* | 11,5 | 13,7 | 9,3 | 11,0 | 7,7 | 9,2 | 6,5 | 7,8 | 5,6 | 6,7 | 4,9 | 5,8 | | | | | 4,5 | 5,4 | |
| | EW HD-W | 4,6* | 4,6* | 8,6* | 8,6* | 10,9 | 15,0 | 8,5 | 11,6 | 6,9 | 9,3 | 5,7 | 7,7 | 4,8 | 6,5 | 4,1 | 5,6 | 3,5 | 4,9 | | | | | 3,2 | 4,5 | |
| | EW HD-W | 6,2* | 6,2* | 9,7* | 9,7* | 14,5 | 16,4* | 11,2 | 13,4 | 9,1 | 10,8 | 7,6 | 9,0 | 6,4 | 7,6 | 5,6 | 6,6 | 4,9 | 5,8 | | | | | 4,7 | 5,5* | 17,05 |
| | EW HD-W | 6,1* | 6,1* | 9,5* | 9,5* | 10,6 | 14,7 | 8,2 | 11,3 | 6,7 | 9,1 | 5,5 | 7,5 | 4,7 | 6,4 | 4,0 | 5,5 | 3,5 | 4,9 | | | | | 3,4 | 4,7 | |
| | EW HD-W | | | 11,0* | 11,0* | 14,5 | 15,6* | 11,1 | 13,3* | 9,0 | 10,7 | 7,5 | 8,9 | 6,4 | 7,6 | 5,6 | 6,6 | | | | | | | 5,2 | 5,7* | 15,96 |
| | EW HD-W | | | 10,8* | 10,8* | 10,5 | 14,6 | 8,1 | 11,2 | 6,6 | 9,0 | 5,5 | 7,5 | 4,6 | 6,4 | 4,0 | 5,5 | | | | | | | 3,7 | 5,1 | |
| | EW HD-W | | | | | | | 11,2 | 11,5* | 9,0 | 9,9* | 7,5 | 8,4* | | | | | | | | | | | 6,5 | 6,9* | 13,45 |
| | EW HD-W | | | | | | | 8,2 | 11,3 | 6,6 | 9,0 | 5,5 | 7,5 | 4,7 | 6,4 | | | | | | | | | 4,5 | 6,2 | |

↑ Height Can be slewed through 360° In longitudinal position of undercarriage Max. reach * Limited by hydr. capacity

The lift capacities are stated in metric tonnes (t) on the lifting gear's stick tip, and can be lifted 360° on firm, level supporting surface. Capacities are valid for 600 mm wide triple grouser pads. Indicated loads are based on ISO 10567 standard and do not exceed 75% of tipping or 87% of hydraulic capacity (indicated via *). Lifting capacity of the excavator is limited by machine stability, hydraulic capacity and maximum permissible load of the load hook.




According to European Standard, EN 474-5: In the European Union excavators have to be equipped with an overload warning device, a load diagram and automatic check valves on the hoist cylinders, when they are used for lifting operations which require the use of lifting accessories.

Lift Capacities

with Industrial-Type Straight Boom 10,50 m

Industrial Stick 7,80 m (Variant 3B)

| m | Under-carriage | 4,5 m | | 6,0 m | | 7,5 m | | 9,0 m | | 10,5 m | | 12,0 m | | 13,5 m | | 15,0 m | | 16,5 m | | 18,0 m | | 19,5 m | | m | |
|------|----------------|-------|-------|-------|-------|-------|-------|-------|-------|--------|-------|--------|-------|--------|------|--------|------|--------|------|--------|------|--------|-------|-------|-------|
| | | EW | HD-W | EW | HD-W | EW | HD-W | EW | HD-W | EW | HD-W | EW | HD-W | EW | HD-W | EW | HD-W | EW | HD-W | EW | HD-W | EW | HD-W | | |
| 19,5 | EW | | | 14,7* | 14,7* | | | | | | | | | | | | | | | | | | 13,9* | 13,9* | 6,37 |
| | HD-W | | | | | | | | | | | | | | | | | | | | | | 14,5* | 14,5* | |
| 18,0 | EW | | | | | 13,3* | 13,3* | 12,0* | 12,0* | | | | | | | | | | | | | | 11,0* | 11,0* | 9,52 |
| | HD-W | | | | | 13,4* | 13,4* | 11,8* | 11,8* | | | | | | | | | | | | | | 11,2* | 11,2* | |
| 16,5 | EW | | | | | | | 11,2* | 11,2* | 10,3* | 10,3* | | | | | | | | | | | | 9,7* | 9,7* | 11,64 |
| | HD-W | | | | | 12,5* | 12,5* | 11,3* | 11,3* | 10,4* | 10,4* | | | | | | | | | | | | 9,1 | 9,8* | |
| 15,0 | EW | | | | | | | 10,8* | 10,8* | 10,0* | 10,0* | 9,3* | 9,3* | | | | | | | | | | 8,8 | 8,9* | 13,24 |
| | HD-W | | | | | | | 10,8* | 10,8* | 10,0* | 10,0* | 8,7 | 9,3* | | | | | | | | | | 7,1 | 9,0* | |
| 13,5 | EW | | | | | | | 10,7* | 10,7* | 9,8* | 9,8* | 9,1* | 9,1* | 8,6* | 8,6* | | | | | | | | 7,4 | 8,4* | 14,51 |
| | HD-W | | | | | | | 10,7* | 10,7* | 9,8* | 9,8* | 8,9 | 9,1* | 6,9 | 8,6* | | | | | | | | 5,9 | 7,5 | |
| 12,0 | EW | | | | | | | 10,7* | 10,7* | 9,8* | 9,8* | 9,1* | 9,1* | 8,5* | 8,5* | 7,0 | 8,1* | | | | | | 6,5 | 7,5 | 15,52 |
| | HD-W | | | | | | | 10,7* | 10,7* | 9,8* | 9,8* | 8,9 | 9,1* | 7,0 | 8,5* | 5,5 | 7,0 | | | | | | 5,1 | 6,5 | |
| 10,5 | EW | | | | | | | 11,0* | 11,0* | 10,0* | 10,0* | 9,2* | 9,2* | 8,5* | 8,5* | 7,1 | 8,0* | | | | | | 5,8 | 6,8 | 16,33 |
| | HD-W | | | | | | | 10,9* | 10,9* | 9,9* | 9,9* | 8,8 | 9,2* | 6,9 | 8,5* | 5,5 | 7,0 | | | | | | 4,5 | 5,9 | |
| 9,0 | EW | | | | | 12,9* | 12,9* | 11,4* | 11,4* | 10,3* | 10,3* | 9,4* | 9,4* | 8,5 | 8,7* | 7,0 | 8,1 | | | | | | 5,3 | 6,3 | 16,96 |
| | HD-W | | | | | 12,8* | 12,8* | 11,3* | 11,3* | 10,2* | 10,2* | 8,5 | 9,3* | 6,8 | 8,6* | 5,4 | 7,0 | 5,7 | 6,6 | | | | 4,0 | 5,3 | |
| 7,5 | EW | | | 16,4* | 16,4* | 13,8* | 13,8* | 12,0* | 12,0* | 10,7* | 10,7* | 9,7* | 9,7* | 8,3 | 8,8* | 6,8 | 7,9 | | | | | | 5,6 | 6,6 | 17,44 |
| | HD-W | | | 16,2* | 16,2* | 13,7* | 13,7* | 11,9* | 11,9* | 10,4 | 10,6* | 8,2 | 9,6* | 6,5 | 8,3 | 5,3 | 6,8 | 4,3 | 5,6 | | | | 3,7 | 5,0 | |
| 6,0 | EW | 20,9* | 20,9* | 18,3* | 18,3* | 15,0* | 15,0* | 12,8* | 12,8* | 11,2* | 11,2* | 9,8 | 10,0* | 8,0 | 9,1* | 6,6 | 7,7 | | | | | | 4,7 | 5,6 | 17,78 |
| | HD-W | 19,4* | 19,4* | 18,1* | 18,1* | 14,9* | 14,9* | 12,7 | 12,7* | 9,8 | 11,1* | 7,7 | 9,8 | 6,2 | 8,0 | 5,1 | 6,6 | 4,1 | 5,5 | | | | 3,5 | 4,7 | |
| 4,5 | EW | 28,4* | 28,4* | 20,6* | 20,6* | 16,3* | 16,3* | 13,6* | 13,6* | 11,5 | 11,7* | 9,3 | 10,3* | 7,7 | 8,9 | 6,4 | 7,5 | 5,4 | 6,3 | | | | 4,5 | 5,4 | 17,98 |
| | HD-W | 27,9* | 27,9* | 20,3* | 20,3* | 15,5 | 16,2* | 11,6 | 13,5* | 9,1 | 11,6 | 7,3 | 9,4 | 5,9 | 7,7 | 4,9 | 6,4 | 4,0 | 5,3 | | | | 3,3 | 4,5 | |
| 3,0 | EW | 3,8* | 3,8* | 22,6* | 22,6* | 17,5* | 17,5* | 13,6 | 14,4* | 10,8 | 12,2* | 8,8 | 10,3 | 7,3 | 8,6 | 6,2 | 7,2 | 5,2 | 6,2 | 4,5 | 5,3 | | 4,4 | 5,3 | 18,06 |
| | HD-W | 4,2* | 4,2* | 19,0 | 22,4* | 13,8 | 17,4* | 10,6 | 13,8 | 8,4 | 10,9 | 6,8 | 8,9 | 5,6 | 7,3 | 4,6 | 6,1 | 3,9 | 5,2 | 3,2 | 4,4 | | 3,2 | 4,4 | |
| 1,5 | EW | 2,6* | 2,6* | 10,1* | 10,1* | 16,3 | 18,4* | 12,7 | 14,9 | 10,2 | 12,0 | 8,4 | 9,8 | 7,0 | 8,2 | 5,9 | 7,0 | 5,1 | 6,0 | 4,4 | 5,2 | | 4,4 | 5,2 | 18,01 |
| | HD-W | 2,6* | 2,6* | 10,6* | 10,6* | 12,5 | 16,7 | 9,7 | 12,9 | 7,8 | 10,3 | 6,4 | 8,4 | 5,3 | 7,0 | 4,4 | 5,9 | 3,7 | 5,1 | 3,2 | 4,4 | | 3,2 | 4,4 | |
| 0 | EW | 3,4* | 3,4* | 8,4* | 8,4* | 15,3 | 18,4 | 12,0 | 14,2 | 9,7 | 11,4 | 8,0 | 9,5 | 6,8 | 8,0 | 5,8 | 6,8 | 5,0 | 5,9 | | | | 4,4 | 5,3 | 17,82 |
| | HD-W | 3,3* | 3,3* | 8,5* | 8,5* | 11,5 | 15,7 | 9,0 | 12,1 | 7,3 | 9,7 | 6,0 | 8,0 | 5,0 | 6,7 | 4,2 | 5,7 | 3,6 | 4,9 | | | | 3,2 | 4,4 | |
| -1,5 | EW | 4,7* | 4,7* | 8,7* | 8,7* | 14,8 | 16,9* | 11,5 | 13,7 | 9,3 | 11,0 | 7,7 | 9,2 | 6,6 | 7,8 | 5,6 | 6,7 | 4,9 | 5,8 | | | | 4,6 | 5,5 | 17,35 |
| | HD-W | 4,6* | 4,6* | 8,6* | 8,6* | 10,9 | 15,0 | 8,5 | 11,6 | 6,9 | 9,3 | 5,7 | 7,7 | 4,8 | 6,5 | 4,1 | 5,6 | 3,5 | 4,9 | | | | 3,3 | 4,5 | |
| -3,0 | EW | | | 9,7* | 9,7* | 14,5 | 16,4* | 11,2 | 13,4 | 9,1 | 10,8 | 7,6 | 9,0 | 6,4 | 7,7 | 5,6 | 6,6 | | | | | | 5,1 | 6,1 | 16,02 |
| | HD-W | | | 9,5* | 9,5* | 10,6 | 14,7 | 8,2 | 11,3 | 6,7 | 9,1 | 5,5 | 7,6 | 4,7 | 6,4 | 4,0 | 5,5 | | | | | | 3,6 | 5,0 | |
| -4,5 | EW | | | | | | | 11,1 | 13,3 | 9,0 | 10,7 | 7,5 | 8,9 | | | | | | | | | | 6,5 | 7,7 | 13,44 |
| | HD-W | | | | | | | 8,1 | 11,2 | 6,6 | 9,0 | 5,5 | 7,5 | 4,7 | 6,4 | | | | | | | | 4,5 | 6,1 | |
| -6,0 | EW | | | | | | | | | | | | | | | | | | | | | | | | |
| | HD-W | | | | | | | | | | | | | | | | | | | | | | | | |
| -7,5 | EW | | | | | | | | | | | | | | | | | | | | | | | | |
| | HD-W | | | | | | | | | | | | | | | | | | | | | | | | |

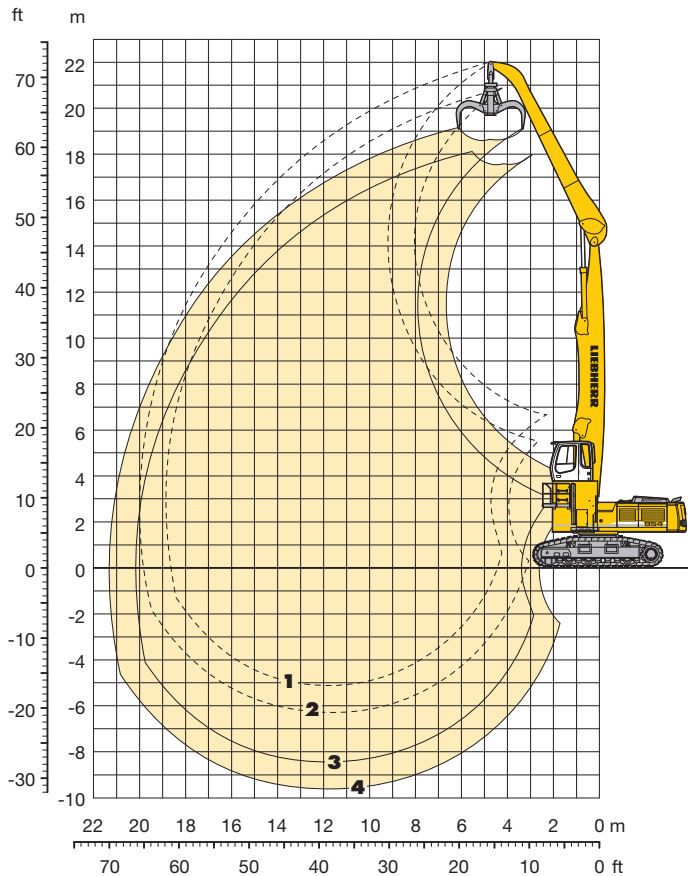
 Height
  Can be slewed through 360°
  In longitudinal position of undercarriage
  Max. reach
 * Limited by hydr. capacity

The lift capacities are stated in metric tonnes (t) on the lifting gear's stick tip, and can be lifted 360° on firm, level supporting surface. Capacities are valid for 600 mm wide triple grouser pads. Indicated loads are based on ISO 10567 standard and do not exceed 75% of tipping or 87% of hydraulic capacity (indicated via *). Lifting capacity of the excavator is limited by machine stability, hydraulic capacity and maximum permissible load of the load hook.

According to European Standard, EN 474-5: In the European Union excavators have to be equipped with an overload warning device, a load diagram and automatic check valves on the hoist cylinders, when they are used for lifting operations which require the use of lifting accessories.

Industrial Attachment

with Industrial-Type Straight Boom 11,50 m



Attachment Envelope

Kinematic variant 2A

- 1** with industrial stick 7,80 m
- 2** with industrial stick 9,00 m
- 3** with industrial stick 7,80 m and grapple model 72 C
- 4** with industrial stick 9,00 m and grapple model 72 C

Operating Weight and Ground Pressure

Operating weight includes basic machine with rigid cab elevation 2,00 m, counterweight 14,5 t, industrial-type straight boom 11,50 m, industrial stick 7,80 m and grapple model 72 C with 5 semi-closed tines 1,20 m³.

| Undercarriage | EW | |
|-----------------|--------------------|-------------|
| Pad width | mm | 600 750 |
| Weight | kg | 70400 71400 |
| Ground pressure | kg/cm ² | 1,29 1,05 |

Operating weight includes basic machine with rigid cab elevation 2,00 m, counterweight 14,5 t, industrial-type straight boom 11,50 m, industrial stick 9,00 m and grapple model 72 C with 5 semi-closed tines 1,20 m³.

| Undercarriage | EW | |
|-----------------|--------------------|-------------|
| Pad width | mm | 600 750 |
| Weight | kg | 70800 71800 |
| Ground pressure | kg/cm ² | 1,30 1,05 |

Lift Capacities

with Industrial-Type Straight Boom 11,50 m

Industrial Stick 7,80 m (Variant 2A)

| Height m | Under-carriage | 4,5 m | | 6,0 m | | 7,5 m | | 9,0 m | | 10,5 m | | 12,0 m | | 13,5 m | | 15,0 m | | 16,5 m | | 18,0 m | | 19,5 m | | m | | | |
|-------------|----------------|-------|-------|-------|-------|-------|-------|-------|-------|--------|-------|--------|-------|--------|------|--------|------|--------|------|--------|------|--------|--|-------|-------|-------|--|
| | | | | | | | | | | | | | | | | | | | | | | | | | | | |
| 21,0 | EW | | | | | | | | | | | | | | | | | | | | | | | | | | |
| 19,5 | EW | | | 15,6* | 15,6* | 13,5* | 13,5* | | | | | | | | | | | | | | | | | 12,1* | 12,1* | 8,22 | |
| 18,0 | EW | | | | | 15,2* | 15,2* | 13,6* | 13,6* | 11,0* | 11,0* | | | | | | | | | | | | | 10,3* | 10,3* | 10,82 | |
| 16,5 | EW | | | | | | | 13,8* | 13,8* | 12,0* | 12,0* | 10,6* | 10,6* | | | | | | | | | | | 9,3* | 9,3* | 12,72 | |
| 15,0 | EW | | | | | | | 13,7* | 13,7* | 11,9* | 11,9* | 10,5* | 10,5* | 8,6 | 9,3* | | | | | | | | | 7,7 | 8,7* | 14,21 | |
| 13,5 | EW | | | | | | | 13,6* | 13,6* | 11,8* | 11,8* | 10,4* | 10,4* | 8,8 | 9,2* | 7,0 | 8,1 | | | | | | | 6,5 | 7,6 | 15,40 | |
| 12,0 | EW | | | | | | | 13,7* | 13,7* | 11,9* | 11,9* | 10,4* | 10,4* | 8,8 | 9,2* | 7,0 | 8,1 | | | | | | | 5,7 | 6,7 | 16,37 | |
| 10,5 | EW | | | | | 16,3* | 16,3* | 13,8* | 13,8* | 11,9* | 11,9* | 10,4* | 10,4* | 8,6 | 9,2* | 7,0 | 8,1 | 5,7 | 6,6 | | | | | 5,1 | 6,0 | 17,15 | |
| 9,0 | EW | | | | | 16,7* | 16,7* | 14,0* | 14,0* | 12,0* | 12,0* | 10,4 | 10,5* | 8,4 | 9,2* | 6,8 | 7,9 | 5,6 | 6,6 | | | | | 4,7 | 5,6 | 17,77 | |
| 7,5 | EW | 16,8* | 16,8* | 20,8* | 20,8* | 17,1* | 17,1* | 14,2* | 14,2* | 12,1* | 12,1* | 10,0 | 10,5* | 8,1 | 9,2* | 6,6 | 7,7 | 5,5 | 6,4 | 4,5 | 5,4 | | | 4,4 | 5,2 | 18,24 | |
| 6,0 | EW | 30,1* | 30,1* | 22,1* | 22,1* | 17,5* | 17,5* | 14,4* | 14,4* | 11,8 | 12,2* | 9,5 | 10,5* | 7,7 | 9,0 | 6,4 | 7,5 | 5,3 | 6,3 | 4,4 | 5,3 | | | 4,1 | 4,9 | 18,58 | |
| 4,5 | EW | 4,3* | 4,3* | 22,5* | 22,5* | 17,6* | 17,6* | 13,9 | 14,4* | 11,0 | 12,1* | 8,9 | 10,4* | 7,4 | 8,6 | 6,1 | 7,2 | 5,1 | 6,1 | 4,3 | 5,2 | | | 4,0 | 4,8 | 18,79 | |
| 3,0 | EW | | | 8,8* | 8,8* | 16,6 | 17,3* | 12,8 | 14,2* | 10,3 | 11,9* | 8,4 | 9,9 | 7,0 | 8,2 | 5,9 | 6,9 | 5,0 | 5,9 | 4,2 | 5,1 | | | 3,9 | 4,4* | 18,88 | |
| 1,5 | EW | | | 5,5* | 5,5* | 15,1 | 16,4* | 11,9 | 13,6* | 9,6 | 11,4 | 7,9 | 9,4 | 6,6 | 7,9 | 5,6 | 6,7 | 4,8 | 5,7 | 4,1 | 4,8* | | | 3,8 | 3,9* | 18,85 | |
| 0 | EW | 1,5* | 1,5* | 5,3* | 5,3* | 12,5* | 12,5* | 11,1 | 12,6* | 9,1 | 10,7* | 7,5 | 9,0 | 6,3 | 7,6 | 5,4 | 6,5 | 4,7 | 5,5* | 4,1 | 4,2* | | | 3,4* | 3,4* | 18,70 | |
| -1,5 | EW | | | 6,1* | 6,1* | 11,6* | 11,6* | 10,7 | 11,2* | 8,7 | 9,7* | 7,2 | 8,3* | 6,1 | 7,0* | 5,3 | 5,9* | 4,6 | 4,7* | 3,3* | 3,3* | | | 2,9* | 2,9* | 18,35 | |
| -3,0 | EW | | | | | 10,4* | 10,4* | 9,5* | 9,5* | 8,3* | 8,3* | 7,0 | 7,2* | 6,0 | 6,0* | 4,9* | 4,9* | 3,7* | 3,7* | | | | | 3,2* | 3,2* | 17,12 | |
| -4,5 | EW | | | | | | | 7,3* | 7,3* | 6,6* | 6,6* | 5,7* | 5,7* | 4,7* | 4,7* | | | | | | | | | 3,8* | 3,8* | 14,86 | |
| -6,0 | EW | | | | | | | | | | | | | | | | | | | | | | | | | | |
| -7,5 | EW | | | | | | | | | | | | | | | | | | | | | | | | | | |
| -9,0 | EW | | | | | | | | | | | | | | | | | | | | | | | | | | |

Industrial Stick 9,00 m (Variant 2A)

| Height m | Under-carriage | 4,5 m | | 6,0 m | | 7,5 m | | 9,0 m | | 10,5 m | | 12,0 m | | 13,5 m | | 15,0 m | | 16,5 m | | 18,0 m | | 19,5 m | | m | | | |
|-------------|----------------|-------|-------|-------|-------|-------|-------|-------|-------|--------|-------|--------|-------|--------|------|--------|------|--------|------|--------|------|--------|------|-------|-------|-------|--|
| | | | | | | | | | | | | | | | | | | | | | | | | | | | |
| 21,0 | EW | | | | | 11,6* | 11,6* | | | | | | | | | | | | | | | | | 11,3* | 11,3* | 7,67 | |
| 19,5 | EW | | | | | 13,3* | 13,3* | 11,8* | 11,8* | 9,6* | 9,6* | | | | | | | | | | | | | 9,3* | 9,3* | 10,63 | |
| 18,0 | EW | | | | | | | 12,9* | 12,9* | 11,6* | 11,6* | 9,7* | 9,7* | | | | | | | | | | | 8,3* | 8,3* | 12,74 | |
| 16,5 | EW | | | | | | | 13,3* | 13,3* | 11,5* | 11,5* | 10,2* | 10,2* | 8,9 | 9,1* | | | | | | | | | 7,6* | 7,6* | 14,38 | |
| 15,0 | EW | | | | | | | | | 11,5* | 11,5* | 10,1* | 10,1* | 9,0* | 9,0* | 7,2 | 8,0* | | | | | | | 6,4 | 7,2* | 15,71 | |
| 13,5 | EW | | | | | | | | | 11,4* | 11,4* | 10,1* | 10,1* | 9,0* | 9,0* | 7,4 | 8,0* | 5,9 | 6,8 | | | | | 5,6 | 6,5 | 16,80 | |
| 12,0 | EW | | | | | | | 13,2* | 13,2* | 11,5* | 11,5* | 10,1* | 10,1* | 9,0* | 9,0* | 7,4 | 8,0* | 5,9 | 6,9 | | | | | 4,9 | 5,8 | 17,69 | |
| 10,5 | EW | | | | | | | 13,3* | 13,3* | 11,5* | 11,5* | 10,1* | 10,1* | 9,0* | 9,0* | 7,3 | 8,0* | 5,9 | 6,9 | 4,8 | 5,6 | | | 4,5 | 5,3 | 18,41 | |
| 9,0 | EW | | | | | | | 13,5* | 13,5* | 11,6* | 11,6* | 10,2* | 10,2* | 8,7 | 9,0* | 7,1 | 8,0* | 5,8 | 6,8 | 4,7 | 5,6 | | | 4,1 | 4,9 | 18,99 | |
| 7,5 | EW | | | | | 16,5* | 16,5* | 13,8* | 13,8* | 11,8* | 11,8* | 10,2* | 10,2* | 8,4 | 9,0* | 6,9 | 7,9* | 5,6 | 6,6 | 4,6 | 5,5 | | | 3,8 | 4,6 | 19,43 | |
| 6,0 | EW | 13,9* | 13,9* | 18,4* | 18,4* | 16,9* | 16,9* | 14,0* | 14,0* | 11,9* | 11,9* | 9,9 | 10,3* | 8,0 | 8,9* | 6,6 | 7,7 | 5,4 | 6,4 | 4,5 | 5,4 | 3,7 | 4,5 | 3,6 | 4,4 | 19,75 | |
| 4,5 | EW | 30,0* | 30,0* | 21,9* | 21,9* | 17,2* | 17,2* | 14,1* | 14,1* | 11,5 | 11,9* | 9,3 | 10,2* | 7,6 | 8,8 | 6,3 | 7,3 | 5,2 | 6,2 | 4,4 | 5,2 | 3,7 | 4,4 | 3,5 | 4,2 | 19,95 | |
| 3,0 | EW | 4,4* | 4,4* | 22,0* | 22,0* | 17,2* | 17,2* | 13,5 | 14,1* | 10,7 | 11,8* | 8,6 | 10,1* | 7,1 | 8,4 | 5,9 | 7,0 | 5,0 | 5,9 | 4,2 | 5,1 | 3,6 | 4,3 | 3,4 | 4,0* | 20,03 | |
| 1,5 | EW | 2,2* | 2,2* | 9,1* | 9,1* | 15,9 | 16,8* | 12,3 | 13,7* | 9,9 | 11,5* | 8,1 | 9,5 | 6,7 | 7,9 | 5,6 | 6,7 | 4,8 | 5,7 | 4,1 | 4,9 | 3,5 | 4,1* | 3,3 | 3,5* | 20,00 | |
| 0 | EW | 2,5* | 2,5* | 6,8* | 6,8* | 14,6 | 15,7* | 11,4 | 13,0* | 9,2 | 10,9 | 7,6 | 9,0 | 6,3 | 7,6 | 5,4 | 6,4 | 4,6 | 5,5 | 3,9 | 4,7* | 3,4 | 3,5* | 3,1* | 3,1* | 19,86 | |
| -1,5 | EW | 3,4* | 3,4* | 6,6* | 6,6* | 13,1* | 13,1* | 10,7 | 12,0* | 8,7 | 10,2* | 7,2 | 8,6 | 6,0 | 7,3 | 5,2 | 6,2 | 4,4 | 5,2* | 3,8 | 4,1* | 2,7* | 2,7* | 2,5* | 2,5* | 19,60 | |
| -3,0 | EW | | | 7,2* | 7,2* | 12,2* | 12,2* | 10,2 | 10,5* | 8,3 | 9,0* | 6,9 | 7,7* | 5,8 | 6,6* | 5,0 | 5,5* | 4,3 | 4,5* | 3,3* | 3,3* | | | 2,5* | 2,5* | 18,75 | |
| -4,5 | EW | | | | | 9,7* | 9,7* | 8,7* | 8,7* | 7,6* | 7,6* | 6,5* | 6,5* | 5,5* | 5,5* | 4,5* | 4,5* | 3,4* | 3,4* | | | | | 2,9* | 2,9* | 17,21 | |
| -6,0 | EW | | | | | | | 5,8* | 5,8* | 5,0* | 5,0* | 4,2* | 4,2* | | | | | | | | | | | 3,7* | 3,7* | 14,23 | |
| -7,5 | EW | | | | | | | | | | | | | | | | | | | | | | | | | | |
| -9,0 | EW | | | | | | | | | | | | | | | | | | | | | | | | | | |

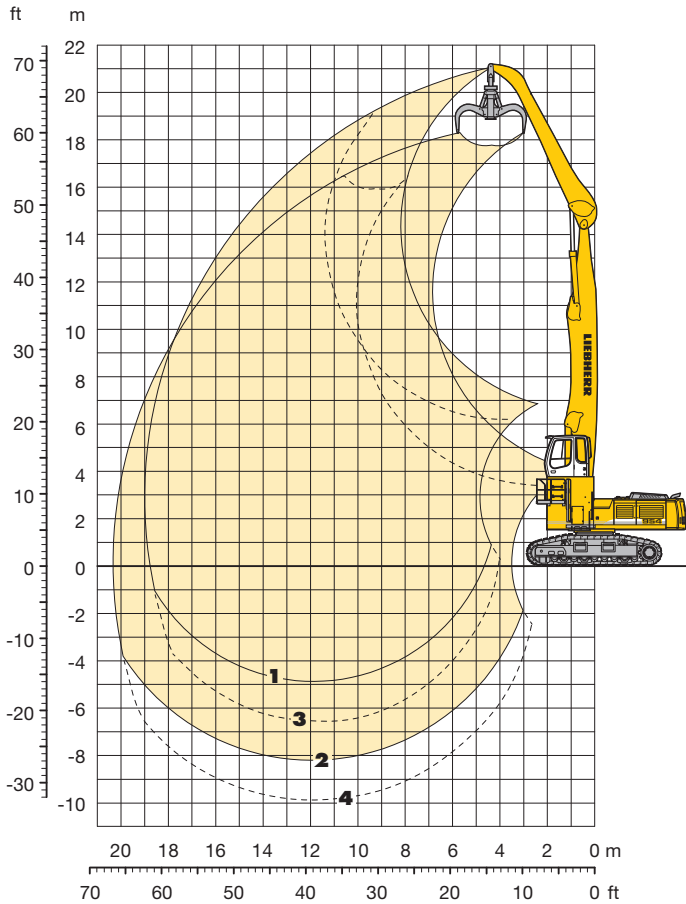
Height Can be slewed through 360° In longitudinal position of undercarriage Max. reach * Limited by hydr. capacity

The lift capacities are stated in metric tonnes (t) on the lifting gear's stick tip, and can be lifted 360° on firm, level supporting surface. Capacities are valid for 600 mm wide triple grouser pads. Indicated loads are based on ISO 10567 standard and do not exceed 75 % of tipping or 87 % of hydraulic capacity (indicated via *). Lifting capacity of the excavator is limited by machine stability, hydraulic capacity and maximum permissible load of the load hook.

According to European Standard, EN 474-5: In the European Union excavators have to be equipped with an overload warning device, a load diagram and automatic check valves on the hoist cylinders, when they are used for lifting operations which require the use of lifting accessories.

Industrial Attachment

with Industrial-Type Straight Boom 11,50 m



Attachment Envelope

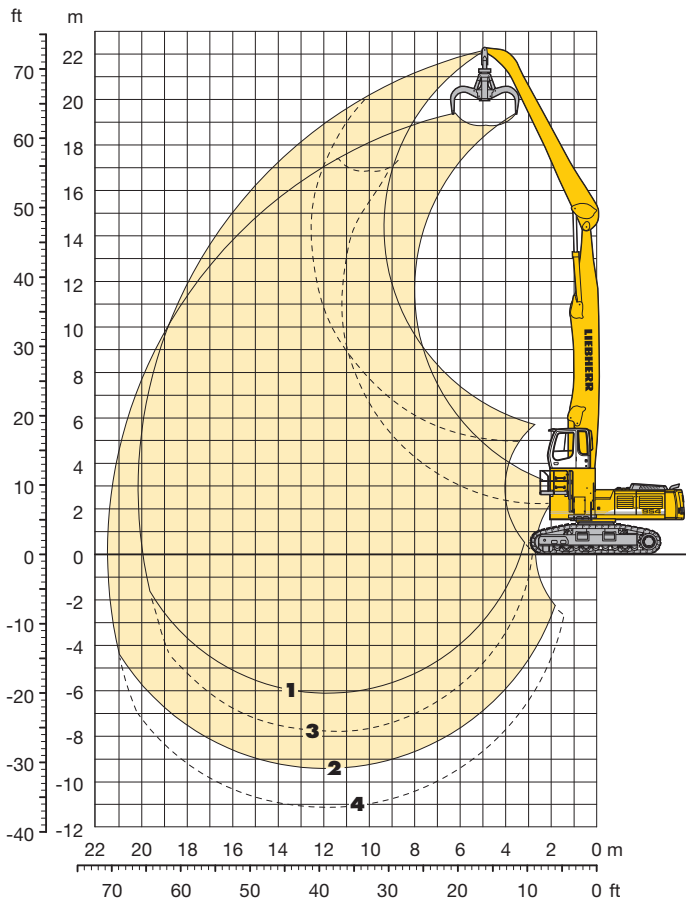
Kinematic variants 3A/3B

- 1** with industrial stick 7,80 m (3B)
- 2** with industrial stick 7,80 m and grapple model 72 C (3B)
- 3** with industrial stick 7,80 m (3A)
- 4** with industrial stick 7,80 m and grapple model 72 C (3A)

Operating Weight and Ground Pressure

Operating weight includes basic machine with rigid cab elevation 2,00 m, counterweight 14,5 t, industrial-type straight boom 11,50 m, industrial stick 7,80 m and grapple model 72 C with 5 semi-closed tines 1,20 m³.

| Undercarriage | | EW | |
|-----------------|--------------------|-------|-------|
| Pad width | mm | 600 | 750 |
| Weight | kg | 70400 | 71400 |
| Ground pressure | kg/cm ² | 1,29 | 1,05 |



Attachment Envelope

Kinematic variants 3A/3B

- 1** with industrial stick 9,00 m (3B)
- 2** with industrial stick 9,00 m and grapple model 72 C (3B)
- 3** with industrial stick 9,00 m (3A)
- 4** with industrial stick 9,00 m and grapple model 72 C (3A)

Operating Weight and Ground Pressure

Operating weight includes basic machine with rigid cab elevation 2,00 m, counterweight 14,5 t, industrial-type straight boom 11,50 m, industrial stick 9,00 m and grapple model 72 C with 5 semi-closed tines 1,20 m³.

| Undercarriage | | EW | |
|-----------------|--------------------|-------|-------|
| Pad width | mm | 600 | 750 |
| Weight | kg | 70800 | 71800 |
| Ground pressure | kg/cm ² | 1,30 | 1,05 |

Lift Capacities

with Industrial-Type Straight Boom 11,50 m

Industrial Stick 7,80 m (Variant 3A)

| ↑ m | Under-carriage | 4,5 m | | 6,0 m | | 7,5 m | | 9,0 m | | 10,5 m | | 12,0 m | | 13,5 m | | 15,0 m | | 16,5 m | | 18,0 m | | 19,5 m | | m | | | | | |
|--------|----------------|-------|-------|-------|-------|-------|-------|-------|-------|--------|-------|--------|-------|--------|------|--------|-----|--------|------|--------|-----|--------|--|-------|-------|-------|-------|-------|--|
| | | | | | | | | | | | | | | | | | | | | | | | | | | | | | |
| 21,0 | EW | | | | | | | | | | | | | | | | | | | | | | | | | | | | |
| 19,5 | EW | | | | | | | | | | | | | | | | | | | | | | | | | | | | |
| 18,0 | EW | | | | | | | | | 11,2* | 11,2* | | | | | | | | | | | | | 10,1* | 10,1* | 11,29 | | | |
| 16,5 | EW | | | | | | | | | | | 9,9* | 9,9* | | | | | | | | | | | | 8,8 | 9,2* | 13,12 | | |
| 15,0 | EW | | | | | | | | | | | 9,7* | 9,7* | 8,6 | 8,9* | | | | | | | | | | 7,3 | 8,4 | 14,55 | | |
| 13,5 | EW | | | | | | | | | | | 9,7* | 9,7* | 8,7 | 8,8* | 7,0 | 8,0 | | | | | | | | 6,2 | 7,2 | 15,71 | | |
| 12,0 | EW | | | | | | | | | | | 9,7* | 9,7* | 8,7 | 8,8* | 7,0 | 8,1 | 5,6 | 6,5 | | | | | | 5,5 | 6,4 | 16,65 | | |
| 10,5 | EW | | | | | | | | | | | 9,8* | 9,8* | 8,5 | 8,9* | 6,9 | 8,0 | 5,6 | 6,6 | | | | | | 4,9 | 5,8 | 17,40 | | |
| 9,0 | EW | | | | | | | | | 11,2* | 11,2* | 10,0* | 10,0* | 8,3 | 9,0* | 6,8 | 7,8 | 5,5 | 6,5 | | | | | | 4,5 | 5,4 | 18,00 | | |
| 7,5 | EW | | | | | | | 13,3* | 13,3* | 11,5* | 11,5* | 9,8 | 10,2* | 8,0 | 9,1* | 6,5 | 7,6 | 5,4 | 6,4 | 4,5 | 5,3 | | | | 4,2 | 5,0 | 18,45 | | |
| 6,0 | EW | 28,8* | 28,8* | 21,1* | 21,1* | 16,7* | 16,7* | 13,9* | 13,9* | 11,6 | 11,9* | 9,3 | 10,4* | 7,6 | 8,8 | 6,3 | 7,4 | 5,2 | 6,2 | 4,4 | 5,2 | | | | 4,0 | 4,8 | 18,77 | | |
| 4,5 | EW | | | 22,6* | 22,6* | 17,6* | 17,6* | 13,6 | 14,4* | 10,8 | 12,2* | 8,7 | 10,2 | 7,2 | 8,4 | 6,0 | 7,1 | 5,1 | 6,0 | 4,3 | 5,1 | | | | 3,8 | 4,6 | 18,96 | | |
| 3,0 | EW | | | 6,7* | 6,7* | 16,1 | 18,2* | 12,5 | 14,7 | 10,0 | 11,8 | 8,2 | 9,7 | 6,8 | 8,1 | 5,7 | 6,8 | 4,9 | 5,8 | 4,2 | 5,0 | | | | 3,7 | 4,5 | 19,03 | | |
| 1,5 | EW | | | 4,7* | 4,7* | 14,2* | 14,2* | 11,5 | 13,8 | 9,3 | 11,1 | 7,7 | 9,2 | 6,5 | 7,7 | 5,5 | 6,6 | 4,7 | 5,6 | 4,0 | 4,9 | | | | 3,7 | 4,5 | 18,98 | | |
| 0 | EW | 1,4* | 1,4* | 4,9* | 4,9* | 11,2* | 11,2* | 10,9 | 13,1 | 8,8 | 10,6 | 7,3 | 8,8 | 6,2 | 7,4 | 5,3 | 6,3 | 4,6 | 5,5 | 4,0 | 4,8 | | | | 3,7 | 4,5 | 18,81 | | |
| -1,5 | EW | 3,0* | 3,0* | 5,8* | 5,8* | 10,8* | 10,8* | 10,4 | 12,6 | 8,5 | 10,2 | 7,1 | 8,5 | 6,0 | 7,2 | 5,1 | 6,2 | 4,5 | 5,4 | 3,9 | 4,8 | | | | 3,8 | 4,6 | 18,51 | | |
| -3,0 | EW | | | 7,1* | 7,1* | 11,4* | 11,4* | 10,2 | 12,4 | 8,3 | 10,0 | 6,9 | 8,3 | 5,9 | 7,1 | 5,1 | 6,1 | 4,4 | 5,4 | 4,0 | 4,8 | | | | 3,9 | 4,7* | 18,09 | | |
| -4,5 | EW | | | | | 12,5* | 12,5* | 10,2 | 12,0* | 8,2 | 9,9 | 6,8 | 8,2 | 5,8 | 7,0 | 5,0 | 6,1 | 4,5 | 5,3* | | | | | | | 4,3 | 4,7* | 17,11 | |
| -6,0 | EW | | | | | | | 10,3* | 10,3* | 8,2 | 9,0* | 6,9 | 7,8* | 5,9 | 6,6* | | | | | | | | | | | 5,2 | 5,6* | 14,81 | |
| -7,5 | EW | | | | | | | | | | | | | | | | | | | | | | | | | | | | |
| -9,0 | EW | | | | | | | | | | | | | | | | | | | | | | | | | | | | |

Industrial Stick 9,00 m (Variant 3A)

| ↑ m | Under-carriage | 4,5 m | | 6,0 m | | 7,5 m | | 9,0 m | | 10,5 m | | 12,0 m | | 13,5 m | | 15,0 m | | 16,5 m | | 18,0 m | | 19,5 m | | m | | | | | |
|--------|----------------|-------|-------|-------|-------|-------|-------|-------|-------|--------|-------|--------|-------|--------|------|--------|------|--------|------|--------|-----|--------|-----|---|------|------|-------|-------|--|
| | | | | | | | | | | | | | | | | | | | | | | | | | | | | | |
| 21,0 | EW | | | | | | | | | | | | | | | | | | | | | | | | | | | | |
| 19,5 | EW | | | | | | | | | | | | | | | | | | | | | | | | 9,1* | 9,1* | 11,14 | | |
| 18,0 | EW | | | | | | | | | | | 9,5* | 9,5* | | | | | | | | | | | | 8,2* | 8,2* | 13,16 | | |
| 16,5 | EW | | | | | | | | | | | | | 8,5* | 8,5* | | | | | | | | | | 7,2 | 7,6* | 14,75 | | |
| 15,0 | EW | | | | | | | | | | | | | 8,4* | 8,4* | 7,2 | 7,8* | | | | | | | | 6,1 | 7,1 | 16,04 | | |
| 13,5 | EW | | | | | | | | | | | | | 8,3* | 8,3* | 7,3 | 7,7* | 5,8 | 6,8 | | | | | | 5,3 | 6,2 | 17,09 | | |
| 12,0 | EW | | | | | | | | | | | | | 8,4* | 8,4* | 7,3 | 7,7* | 5,9 | 6,9 | | | | | | 4,7 | 5,6 | 17,96 | | |
| 10,5 | EW | | | | | | | | | | | 9,3* | 9,3* | 8,4* | 8,4* | 7,2 | 7,7* | 5,8 | 6,8 | 4,7 | 5,6 | | | | 4,3 | 5,1 | 18,66 | | |
| 9,0 | EW | | | | | | | | | | | 9,4* | 9,4* | 8,5* | 8,5* | 7,0 | 7,8* | 5,7 | 6,7 | 4,7 | 5,5 | | | | 3,9 | 4,7 | 19,22 | | |
| 7,5 | EW | | | | | | | | | 10,9* | 10,9* | 9,7* | 9,7* | 8,3 | 8,7* | 6,8 | 7,8 | 5,6 | 6,5 | 4,6 | 5,4 | 3,7 | 4,5 | | 3,7 | 4,4 | 19,64 | | |
| 6,0 | EW | | | | | | | 13,1* | 13,1* | 11,3* | 11,3* | 9,7 | 9,9* | 7,9 | 8,8* | 6,5 | 7,5 | 5,3 | 6,3 | 4,4 | 5,3 | 3,7 | 4,4 | | 3,5 | 4,2 | 19,94 | | |
| 4,5 | EW | 29,1* | 29,1* | 21,1* | 21,1* | 16,6* | 16,6* | 13,7* | 13,7* | 11,3 | 11,7* | 9,1 | 10,2* | 7,4 | 8,7 | 6,1 | 7,2 | 5,1 | 6,1 | 4,3 | 5,1 | 3,6 | 4,4 | | 3,3 | 4,1 | 20,12 | | |
| 3,0 | EW | 2,9* | 2,9* | 18,2* | 18,2* | 17,1 | 17,4* | 13,1 | 14,2* | 10,4 | 12,0* | 8,5 | 9,9 | 7,0 | 8,2 | 5,8 | 6,9 | 4,9 | 5,8 | 4,1 | 5,0 | 3,5 | 4,3 | | 3,2 | 4,0 | 20,19 | | |
| 1,5 | EW | 1,8* | 1,8* | 7,6* | 7,6* | 15,4 | 17,8* | 12,0 | 14,2 | 9,6 | 11,4 | 7,9 | 9,3 | 6,6 | 7,8 | 5,5 | 6,6 | 4,7 | 5,6 | 4,0 | 4,8 | 3,4 | 4,2 | | 3,2 | 3,9 | 20,14 | | |
| 0 | EW | 2,3* | 2,3* | 6,1* | 6,1* | 14,1 | 14,4* | 11,0 | 13,3 | 8,9 | 10,7 | 7,4 | 8,8 | 6,2 | 7,4 | 5,2 | 6,3 | 4,5 | 5,4 | 3,9 | 4,7 | 3,3 | 4,1 | | 3,2 | 3,9 | 19,98 | | |
| -1,5 | EW | 3,3* | 3,3* | 6,3* | 6,3* | 12,0* | 12,0* | 10,4 | 12,6 | 8,4 | 10,2 | 7,0 | 8,4 | 5,9 | 7,1 | 5,0 | 6,1 | 4,3 | 5,3 | 3,8 | 4,6 | 3,3 | 4,1 | | 3,3 | 4,0 | 19,70 | | |
| -3,0 | EW | 4,5* | 4,5* | 7,0* | 7,0* | 11,6* | 11,6* | 10,0 | 12,2 | 8,1 | 9,8 | 6,7 | 8,1 | 5,7 | 6,9 | 4,9 | 5,9 | 4,2 | 5,2 | 3,7 | 4,5 | | | | 3,4 | 4,1 | 19,30 | | |
| -4,5 | EW | | | 8,0* | 8,0* | 12,1* | 12,1* | 9,8 | 12,0 | 7,9 | 9,6 | 6,6 | 8,0 | 5,6 | 6,8 | 4,8 | 5,8 | 4,2 | 5,1 | 3,7 | 4,6 | | | | 3,6 | 3,9* | 18,75 | | |
| -6,0 | EW | | | | | 12,8 | 12,9* | 9,8 | 11,3* | 7,8 | 9,6 | 6,5 | 7,9 | 5,5 | 6,7 | 4,8 | 5,8 | 4,2 | 5,0* | | | | | | | 4,0 | 4,4* | 17,19 | |
| -7,5 | EW | | | | | | | | | 7,9 | 8,3* | 6,6 | 7,2* | 5,6 | 6,1* | | | | | | | | | | | 5,3 | 5,6* | 14,15 | |
| -9,0 | EW | | | | | | | | | | | | | | | | | | | | | | | | | | | | |

↑ Height Can be slewed through 360° In longitudinal position of undercarriage Max. reach * Limited by hydr. capacity

The lift capacities are stated in metric tonnes (t) on the lifting gear's stick tip, and can be lifted 360° on firm, level supporting surface. Capacities are valid for 600 mm wide triple grouser pads. Indicated loads are based on ISO 10567 standard and do not exceed 75% of tipping or 87% of hydraulic capacity (indicated via *). Lifting capacity of the excavator is limited by machine stability, hydraulic capacity and maximum permissible load of the load hook. According to European Standard, EN 474-5: In the European Union excavators have to be equipped with an overload warning device, a load diagram and automatic check valves on the hoist cylinders, when they are used for lifting operations which require the use of lifting accessories.

Lift Capacities

with Industrial-Type Straight Boom 11,50 m

Industrial Stick 7,80 m (Variant 3B)

| ↑ m | Under-carriage | 4,5 m | | 6,0 m | | 7,5 m | | 9,0 m | | 10,5 m | | 12,0 m | | 13,5 m | | 15,0 m | | 16,5 m | | 18,0 m | | 19,5 m | | m | | | | |
|--------|----------------|-------|-------|-------|-------|-------|-------|-------|-------|--------|-------|--------|------|--------|------|--------|------|--------|-----|--------|-----|--------|--|-------|-------|-------|-------|--|
| | | | | | | | | | | | | | | | | | | | | | | | | | | | | |
| 21,0 | EW | | | | | | | | | | | | | | | | | | | | | | | 16,2* | 16,2* | 4,75 | | |
| 19,5 | EW | | | | | 13,4* | 13,4* | | | | | | | | | | | | | | | | | | 11,7* | 11,7* | 8,83 | |
| 18,0 | EW | | | | | 12,7* | 12,7* | 11,1* | 11,1* | 10,1* | 10,1* | | | | | | | | | | | | | | 9,7* | 9,7* | 11,29 | |
| 16,5 | EW | | | | | | | 10,8* | 10,8* | 9,7* | 9,7* | 8,9* | 8,9* | | | | | | | | | | | | 8,5* | 8,5* | 13,12 | |
| 15,0 | EW | | | | | | | 10,6* | 10,6* | 9,5* | 9,5* | 8,7* | 8,7* | 8,1* | 8,1* | | | | | | | | | | 7,3 | 7,8* | 14,55 | |
| 13,5 | EW | | | | | | | 10,5* | 10,5* | 9,5* | 9,5* | 8,7* | 8,7* | 8,0* | 8,0* | 7,0 | 7,5* | | | | | | | | 6,2 | 7,2 | 15,71 | |
| 12,0 | EW | | | | | | | 10,7* | 10,7* | 9,6* | 9,6* | 8,7* | 8,7* | 8,0* | 8,0* | 7,0 | 7,5* | 5,6 | 6,6 | | | | | | 5,5 | 6,4 | 16,65 | |
| 10,5 | EW | | | | | 12,6* | 12,6* | 11,0* | 11,0* | 9,8* | 9,8* | 8,9* | 8,9* | 8,1* | 8,1* | 6,9 | 7,5* | 5,6 | 6,6 | | | | | | 4,9 | 5,8 | 17,40 | |
| 9,0 | EW | | | | | 13,2* | 13,2* | 11,4* | 11,4* | 10,1* | 10,1* | 9,1* | 9,1* | 8,2* | 8,2* | 6,8 | 7,6* | 5,6 | 6,5 | | | | | | 4,5 | 5,4 | 18,00 | |
| 7,5 | EW | 17,1* | 17,1* | 17,3* | 17,3* | 14,1* | 14,1* | 12,0* | 12,0* | 10,5* | 10,5* | 9,3* | 9,3* | 8,0 | 8,4* | 6,6 | 7,6 | 5,4 | 6,4 | 4,5 | 5,3 | | | | 4,2 | 5,0 | 18,45 | |
| 6,0 | EW | 26,0* | 26,0* | 19,1* | 19,1* | 15,2* | 15,2* | 12,7* | 12,7* | 10,9* | 10,9* | 9,3 | 9,6* | 7,6 | 8,6* | 6,3 | 7,4 | 5,2 | 6,2 | 4,4 | 5,2 | | | | 4,0 | 4,8 | 18,77 | |
| 4,5 | EW | | | 20,9* | 20,9* | 16,2* | 16,2* | 13,3* | 13,3* | 10,8 | 11,3* | 8,8 | 9,9* | 7,2 | 8,5 | 6,0 | 7,1 | 5,1 | 6,0 | 4,3 | 5,1 | | | | 3,8 | 4,6 | 18,96 | |
| 3,0 | EW | | | 6,7* | 6,7* | 16,1 | 17,1* | 12,5 | 13,9* | 10,0 | 11,7* | 8,2 | 9,7 | 6,8 | 8,1 | 5,8 | 6,8 | 4,9 | 5,8 | 4,2 | 5,0 | | | | 3,7 | 4,5 | 19,03 | |
| 1,5 | EW | | | 4,7* | 4,7* | 14,2* | 14,2* | 11,6 | 13,8 | 9,4 | 11,1 | 7,7 | 9,2 | 6,5 | 7,7 | 5,5 | 6,6 | 4,7 | 5,6 | 4,1 | 4,9 | | | | 3,7 | 4,5 | 18,98 | |
| 0 | EW | | | 4,9* | 4,9* | 11,2* | 11,2* | 10,9 | 13,1 | 8,8 | 10,6 | 7,4 | 8,8 | 6,2 | 7,4 | 5,3 | 6,4 | 4,6 | 5,5 | 4,0 | 4,8 | | | | 3,7 | 4,5 | 18,81 | |
| -1,5 | EW | | | 5,8* | 5,8* | 10,8* | 10,8* | 10,4 | 12,6 | 8,5 | 10,2 | 7,1 | 8,5 | 6,0 | 7,2 | 5,1 | 6,2 | 4,5 | 5,4 | 3,9 | 4,8 | | | | 3,8 | 4,7 | 18,35 | |
| -3,0 | EW | | | | | 11,4* | 11,4* | 10,2 | 12,4 | 8,3 | 10,0 | 6,9 | 8,3 | 5,9 | 7,1 | 5,1 | 6,1 | 4,4 | 5,4 | | | | | | 4,2 | 5,1 | 17,02 | |
| -4,5 | EW | | | | | | | | | 8,2 | 9,9 | 6,8 | 8,2 | 5,8 | 7,0 | | | | | | | | | | 5,3 | 6,4 | 14,44 | |
| -6,0 | EW | | | | | | | | | | | | | | | | | | | | | | | | | | | |
| -7,5 | EW | | | | | | | | | | | | | | | | | | | | | | | | | | | |
| -9,0 | EW | | | | | | | | | | | | | | | | | | | | | | | | | | | |

Industrial Stick 9,00 m (Variant 3B)

| ↑ m | Under-carriage | 4,5 m | | 6,0 m | | 7,5 m | | 9,0 m | | 10,5 m | | 12,0 m | | 13,5 m | | 15,0 m | | 16,5 m | | 18,0 m | | 19,5 m | | m | | | | | |
|--------|----------------|-------|-------|-------|-------|-------|-------|-------|-------|--------|-------|--------|------|--------|------|--------|------|--------|------|--------|-----|--------|-----|---|-------|-------|-------|-------|--|
| | | | | | | | | | | | | | | | | | | | | | | | | | | | | | |
| 21,0 | EW | | | | | 12,3* | 12,3* | | | | | | | | | | | | | | | | | | 10,9* | 10,9* | 8,35 | | |
| 19,5 | EW | | | | | | | 10,7* | 10,7* | 9,7* | 9,7* | | | | | | | | | | | | | | | 9,1* | 9,1* | 11,14 | |
| 18,0 | EW | | | | | | | 10,3* | 10,3* | 9,3* | 9,3* | 8,5* | 8,5* | | | | | | | | | | | | | 8,1* | 8,1* | 13,16 | |
| 16,5 | EW | | | | | | | | | 9,0* | 9,0* | 8,3* | 8,3* | 7,7* | 7,7* | | | | | | | | | | | 7,3 | 7,3* | 14,75 | |
| 15,0 | EW | | | | | | | | | 8,9* | 8,9* | 8,1* | 8,1* | 7,5* | 7,5* | 7,1* | 7,1* | | | | | | | | | 6,1 | 6,8* | 16,04 | |
| 13,5 | EW | | | | | | | | | 8,8* | 8,8* | 8,1* | 8,1* | 7,5* | 7,5* | 7,0* | 7,0* | 5,9 | 6,6* | | | | | | 5,3 | 6,2 | 17,09 | | |
| 12,0 | EW | | | | | | | | | 8,9* | 8,9* | 8,1* | 8,1* | 7,5* | 7,5* | 7,0* | 7,0* | 5,9 | 6,5* | | | | | | 4,7 | 5,6 | 17,96 | | |
| 10,5 | EW | | | | | | | 10,2* | 10,2* | 9,1* | 9,1* | 8,3* | 8,3* | 7,6* | 7,6* | 7,0* | 7,0* | 5,9 | 6,6* | 4,7 | 5,6 | | | | 4,3 | 5,1 | 18,66 | | |
| 9,0 | EW | | | | | | | 10,6* | 10,6* | 9,4* | 9,4* | 8,5* | 8,5* | 7,7* | 7,7* | 7,0 | 7,1* | 5,7 | 6,6* | 4,7 | 5,5 | | | | 3,9 | 4,7 | 19,22 | | |
| 7,5 | EW | | | | | 13,0* | 13,0* | 11,1* | 11,1* | 9,8* | 9,8* | 8,7* | 8,7* | 7,9* | 7,9* | 6,8 | 7,2* | 5,6 | 6,5 | 4,6 | 5,4 | 3,8 | 4,5 | | 3,7 | 4,4 | 19,64 | | |
| 6,0 | EW | 14,6* | 14,6* | 17,3* | 17,3* | 14,0* | 14,0* | 11,8* | 11,8* | 10,2* | 10,2* | 9,0* | 9,0* | 7,9 | 8,1* | 6,5 | 7,4* | 5,4 | 6,3 | 4,5 | 5,3 | 3,7 | 4,5 | | 3,5 | 4,2 | 19,94 | | |
| 4,5 | EW | 26,4* | 26,4* | 19,1* | 19,1* | 15,1* | 15,1* | 12,5* | 12,5* | 10,7* | 10,7* | 9,1 | 9,4* | 7,4 | 8,3* | 6,1 | 7,2 | 5,1 | 6,1 | 4,3 | 5,1 | 3,6 | 4,4 | | 3,3 | 4,1 | 20,12 | | |
| 3,0 | EW | 2,9* | 2,9* | 18,2* | 18,2* | 16,1* | 16,1* | 13,1* | 13,1* | 10,4 | 11,1* | 8,5 | 9,7* | 7,0 | 8,2 | 5,8 | 6,9 | 4,9 | 5,8 | 4,1 | 5,0 | 3,5 | 4,3 | | 3,3 | 4,0 | 20,19 | | |
| 1,5 | EW | 1,8* | 1,8* | 7,6* | 7,6* | 15,4 | 16,8* | 12,0 | 13,7* | 9,6 | 11,4 | 7,9 | 9,3 | 6,6 | 7,8 | 5,5 | 6,6 | 4,7 | 5,6 | 4,0 | 4,8 | 3,4 | 4,2 | | 3,2 | 3,9 | 20,14 | | |
| 0 | EW | 2,3* | 2,3* | 6,1* | 6,1* | 14,1 | 14,4* | 11,1 | 13,3 | 9,0 | 10,7 | 7,4 | 8,8 | 6,2 | 7,4 | 5,3 | 6,3 | 4,5 | 5,4 | 3,9 | 4,7 | 3,4 | 4,1 | | 3,2 | 4,0 | 19,98 | | |
| -1,5 | EW | 3,3* | 3,3* | 6,3* | 6,3* | 12,0* | 12,0* | 10,4 | 12,6 | 8,4 | 10,2 | 7,0 | 8,4 | 5,9 | 7,1 | 5,0 | 6,1 | 4,3 | 5,3 | 3,8 | 4,6 | 3,3 | 4,1 | | 3,3 | 4,0 | 19,70 | | |
| -3,0 | EW | | | 7,0* | 7,0* | 11,6* | 11,6* | 10,0 | 12,2 | 8,1 | 9,8 | 6,7 | 8,2 | 5,7 | 6,9 | 4,9 | 5,9 | 4,2 | 5,2 | 3,7 | 4,5 | | | | 3,5 | 4,3 | 18,71 | | |
| -4,5 | EW | | | | | 12,1* | 12,1* | 9,8 | 12,0 | 7,9 | 9,6 | 6,6 | 8,0 | 5,6 | 6,8 | 4,8 | 5,9 | 4,2 | 5,1 | | | | | | | 4,0 | 4,9 | 17,05 | |
| -6,0 | EW | | | | | | | | | 7,9 | 9,6 | 6,5 | 7,9 | | | | | | | | | | | | | 5,6 | 6,8 | 13,40 | |
| -7,5 | EW | | | | | | | | | | | | | | | | | | | | | | | | | | | | |
| -9,0 | EW | | | | | | | | | | | | | | | | | | | | | | | | | | | | |

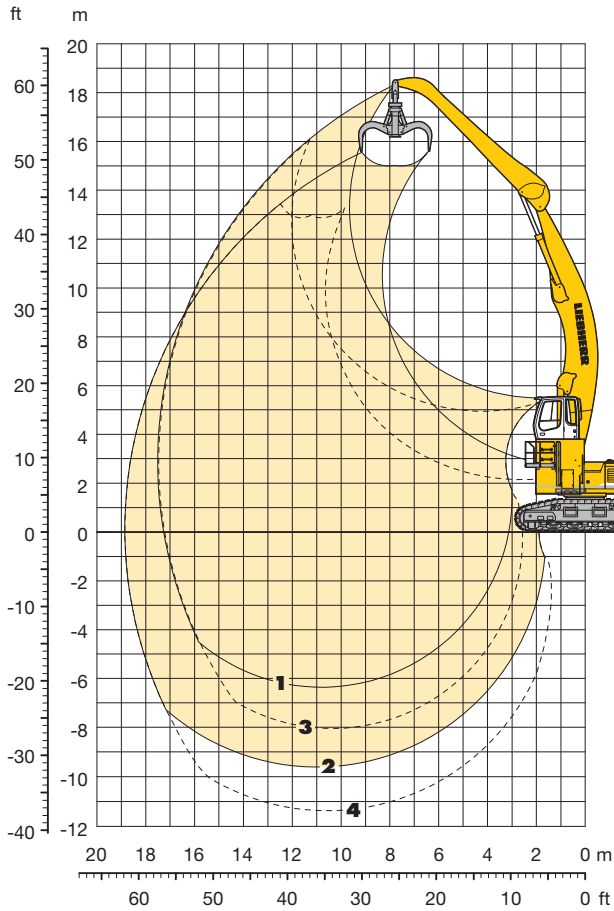
↑ Height Can be slewed through 360° In longitudinal position of undercarriage Max. reach * Limited by hydr. capacity

The lift capacities are stated in metric tonnes (t) on the lifting gear's stick tip, and can be lifted 360° on firm, level supporting surface. Capacities are valid for 600 mm wide triple grouser pads. Indicated loads are based on ISO 10567 standard and do not exceed 75% of tipping or 87% of hydraulic capacity (indicated via *). Lifting capacity of the excavator is limited by machine stability, hydraulic capacity and maximum permissible load of the load hook.

According to European Standard, EN 474-5: In the European Union excavators have to be equipped with an overload warning device, a load diagram and automatic check valves on the hoist cylinders, when they are used for lifting operations which require the use of lifting accessories.

Industrial Attachment

with Industrial-Type Gooseneck Boom 10,50 m



Attachment Envelope

Kinematic variants 3C/3D

- 1** with industrial stick 7,80 m (3D)
- 2** with industrial stick 7,80 m and grapple model 72 C (3D)
- 3** with industrial stick 7,80 m (3C)
- 4** with industrial stick 7,80 m and grapple model 72 C (3C)

Operating Weight and Ground Pressure

Operating weight includes basic machine with rigid cab elevation 2,00 m, counterweight 14,5 t, industrial-type gooseneck boom 10,50 m, industrial stick 7,80 m and grapple model 72 C with 5 semi-closed tines 1,20 m³.

| Undercarriage | HD-W | | EW | |
|-----------------|-------|-------|-------|-------|
| | mm | kg | mm | kg |
| Pad width | 600 | 750 | 600 | 750 |
| Weight | 63900 | 65300 | 70300 | 71300 |
| Ground pressure | 1,21 | 0,99 | 1,29 | 1,05 |

Lift Capacities

with Industrial-Type Gooseneck Boom 10,50 m

Industrial Stick 7,80 m (Variant 3C)

| ↑ m | Under-carriage | 4,5 m | | 6,0 m | | 7,5 m | | 9,0 m | | 10,5 m | | 12,0 m | | 13,5 m | | 15,0 m | | 16,5 m | | 18,0 m | | 19,5 m | | m | | |
|--------|----------------|-------|-------|-------|-------|-------|-------|-------|-------|--------|-------|--------|------|--------|------|--------|------|--------|-----|--------|--|--------|-----|------|------|-------|
| | | | | | | | | | | | | | | | | | | | | | | | | | | |
| 19,5 | EW HD-W | | | | | | | | | | | | | | | | | | | | | | | | | |
| 18,0 | EW HD-W | | | | | | | | | | | | | | | | | | | | | | | | | |
| 16,5 | EW HD-W | | | | | | | | | | | | | | | | | | | | | | | | | |
| 15,0 | EW HD-W | | | | | | | | | | | 7,2* | 7,2* | | | | | | | | | | | 7,2* | 7,2* | 12,38 |
| 13,5 | EW HD-W | | | | | | | | | | | 7,0* | 7,0* | 6,9* | 6,9* | | | | | | | | | 6,9* | 6,9* | 13,73 |
| 12,0 | EW HD-W | | | | | | | | | | | 6,9* | 6,9* | 6,8* | 6,8* | | | | | | | | | 6,7* | 6,7* | 14,80 |
| 10,5 | EW HD-W | | | | | | | | | | | 7,1* | 7,1* | 6,8* | 6,8* | 6,6* | 6,6* | | | | | | | 6,6* | 6,6* | 15,64 |
| 9,0 | EW HD-W | | | | | | | | | | | 7,3* | 7,3* | 6,9* | 6,9* | 6,7* | 6,7* | | | | | | | 6,0 | 6,5* | 16,31 |
| 7,5 | EW HD-W | | | | | | | | | | 8,2* | 8,2* | 7,7* | 7,7* | 7,2* | 7,2* | 6,8* | 6,8* | 5,8 | 6,6* | | | | 5,5 | 6,5 | 16,81 |
| 6,0 | EW HD-W | | | | | | | 9,9* | 9,9* | | 8,2* | 8,2* | 7,6* | 7,6* | 6,8 | 6,8 | 6,8 | 6,8 | 4,4 | 5,7 | | | | 4,2 | 5,5 | |
| 4,5 | EW HD-W | 22,6* | 22,6* | 16,3* | 16,3* | 13,0* | 13,0* | 11,0* | 11,0* | 9,6* | 9,6* | 8,6* | 8,6* | 7,9* | 7,9* | 6,5 | 7,3* | 5,5 | 6,4 | | | | 4,9 | 5,8 | | |
| 3,0 | EW HD-W | 8,3* | 8,3* | 19,0* | 19,0* | 14,6* | 14,6* | 12,0* | 12,0* | 10,3* | 10,3* | 9,1 | 9,1* | 7,5 | 8,2* | 6,3 | 7,3 | 5,3 | 6,2 | | | | 4,8 | 5,6 | | |
| 1,5 | EW HD-W | 5,6* | 5,6* | 14,3* | 14,3* | 16,1* | 16,1* | 13,0 | 13,0* | 10,4 | 11,0* | 8,6 | 9,6* | 7,1 | 8,4 | 6,0 | 7,1 | 5,1 | 6,1 | | | | 4,7 | 5,5 | | |
| 0 | EW HD-W | 5,7* | 5,7* | 11,4* | 11,4* | 15,5 | 17,2* | 12,1 | 13,9* | 9,8 | 11,6 | 8,1 | 9,6 | 6,8 | 8,1 | 5,8 | 6,9 | 5,0 | 5,9 | | | | 3,4 | 4,6 | | |
| -1,5 | EW HD-W | 6,7* | 6,7* | 10,8* | 10,8* | 14,8 | 17,8 | 11,5 | 13,8 | 9,4 | 11,1 | 7,8 | 9,2 | 6,6 | 7,8 | 5,6 | 6,7 | 4,9 | 5,8 | | | | 4,7 | 5,6 | | |
| -3,0 | EW HD-W | 7,8* | 7,8* | 11,2* | 11,2* | 14,4 | 17,4 | 11,2 | 13,4 | 9,1 | 10,8 | 7,5 | 9,0 | 6,4 | 7,6 | 5,5 | 6,6 | | | | | | 4,9 | 5,8 | | |
| -4,5 | EW HD-W | 8,9* | 8,9* | 11,9* | 11,9* | 10,5 | 14,6 | 8,2 | 11,3 | 6,6 | 9,1 | 5,5 | 7,5 | 4,7 | 6,4 | 4,0 | 5,5 | | | | | | 3,5 | 4,8 | | |
| -6,0 | EW HD-W | 8,8* | 8,8* | 11,8* | 11,8* | 10,3 | 14,4 | 8,0 | 11,1 | 6,5 | 8,9 | 5,4 | 7,4 | 4,6 | 6,3 | 3,9 | 5,4 | | | | | | 3,7 | 5,1 | | |
| -7,5 | EW HD-W | | | 12,9* | 12,9* | 14,3 | 17,3 | 11,0 | 13,2 | 8,9 | 10,6 | 7,4 | 8,8 | 6,3 | 7,5 | | | | | | | | 5,6 | 6,6 | | |
| | | | | 12,8* | 12,8* | 10,4 | 14,5 | 8,0 | 11,0 | 6,4 | 8,9 | 5,4 | 7,4 | 4,6 | 6,3 | 4,0 | 5,5 | | | | | | 4,0 | 5,5 | | |
| | | | | | | 14,6 | 16,8* | 11,1 | 13,4 | 9,0 | 10,7 | 7,5 | 8,9 | | | | | | | | | | 6,5 | 7,7 | | |
| | | | | | | 10,6 | 14,7 | 8,1 | 11,2 | 6,5 | 9,0 | 5,4 | 7,5 | 4,7 | 6,4 | | | | | | | | 4,6 | 6,2 | | |

Industrial Stick 7,80 m (Variant 3D)

| ↑ m | Under-carriage | 4,5 m | | 6,0 m | | 7,5 m | | 9,0 m | | 10,5 m | | 12,0 m | | 13,5 m | | 15,0 m | | 16,5 m | | 18,0 m | | 19,5 m | | m | | |
|--------|----------------|-------|-------|-------|-------|-------|-------|-------|-------|--------|-------|--------|------|--------|------|--------|------|--------|-----|--------|--|--------|-----|-------|-------|-------|
| | | | | | | | | | | | | | | | | | | | | | | | | | | |
| 19,5 | EW HD-W | | | | | | | | | | | | | | | | | | | | | | | | | |
| 18,0 | EW HD-W | | | | | | | | | | | | | | | | | | | | | | | | | |
| 16,5 | EW HD-W | | | | | | | 9,7* | 9,7* | 9,1* | 9,1* | | | | | | | | | | | | | 10,3* | 10,3* | 8,27 |
| 15,0 | EW HD-W | | | | | | | 9,7* | 9,7* | 8,7* | 8,7* | 8,3* | 8,3* | | | | | | | | | | | 9,1* | 9,1* | 10,65 |
| 13,5 | EW HD-W | | | | | | | | | 8,7* | 8,7* | 8,3* | 8,3* | | | | | | | | | | | 8,2* | 8,2* | 12,38 |
| 12,0 | EW HD-W | | | | | | | | | 8,5* | 8,5* | 8,1* | 8,1* | 7,8* | 7,8* | | | | | | | | | 8,3* | 8,3* | 13,73 |
| 10,5 | EW HD-W | | | | | | | | | 8,5* | 8,5* | 8,0* | 8,0* | 7,7* | 7,7* | | | | | | | | | 7,7* | 7,7* | 13,73 |
| 9,0 | EW HD-W | | | | | | | 9,9* | 9,9* | 8,7* | 8,7* | 8,1* | 8,1* | 7,7* | 7,7* | 7,3 | 7,3* | | | | | | | 7,4* | 7,4* | 14,80 |
| 7,5 | EW HD-W | | | | | | | 9,8* | 9,8* | 8,7* | 8,7* | 8,1* | 8,1* | 7,2* | 7,2* | 5,7 | 7,3 | | | | | | | 6,6 | 7,2* | 15,64 |
| 6,0 | EW HD-W | | | | | | | | | 8,8* | 8,8* | 8,3* | 8,3* | 7,0 | 7,8* | 5,6 | 7,2 | | | | | | | 5,2 | 6,7 | |
| 4,5 | EW HD-W | 25,6* | 25,6* | 18,5* | 18,5* | 14,7* | 14,7* | 12,3* | 12,3* | 10,7* | 10,7* | 9,5* | 9,5* | 7,9 | 8,6* | 6,5 | 7,6 | 5,5 | 6,4 | | | | 4,9 | 5,8 | | |
| 3,0 | EW HD-W | 8,3* | 8,3* | 20,8* | 20,8* | 16,1* | 16,1* | 13,2* | 13,2* | 11,1 | 11,3* | 9,0 | 9,9* | 7,5 | 8,7 | 6,3 | 7,3 | 5,3 | 6,2 | | | | 3,6 | 4,9 | | |
| 1,5 | EW HD-W | 5,6* | 5,6* | 14,3* | 14,3* | 16,7 | 17,3* | 12,9 | 14,0* | 10,4 | 11,8* | 8,5 | 8,6 | 5,4 | 7,1 | 4,5 | 6,0 | 3,8 | 5,1 | | | | 4,7 | 5,5 | | |
| 0 | EW HD-W | 5,6* | 5,6* | 15,0* | 15,0* | 12,8 | 17,1 | 10,0 | 13,2 | 8,0 | 10,5 | 6,5 | 8,6 | 5,4 | 7,1 | 4,5 | 6,0 | 3,8 | 5,1 | | | | 3,4 | 4,6 | | |
| -1,5 | EW HD-W | 6,7* | 6,7* | 11,2* | 11,2* | 15,5 | 18,1* | 12,1 | 14,4 | 9,8 | 11,6 | 8,1 | 9,6 | 6,8 | 8,1 | 5,8 | 6,9 | 5,0 | 5,9 | | | | 4,6 | 5,5 | | |
| -3,0 | EW HD-W | 7,8* | 7,8* | 11,1* | 11,1* | 10,5 | 14,6 | 8,2 | 11,3 | 6,6 | 9,1 | 5,5 | 7,5 | 4,7 | 6,4 | 4,0 | 5,5 | | | | | | 4,7 | 5,6 | | |
| -4,5 | EW HD-W | 7,7* | 7,7* | 11,9* | 11,9* | 14,3 | 17,2 | 11,0 | 13,2 | 8,9 | 10,6 | 7,4 | 8,8 | 6,3 | 7,5 | 5,5 | 6,5 | | | | | | 4,9 | 5,8 | | |
| -6,0 | EW HD-W | | | 11,8* | 11,8* | 10,3 | 14,5 | 8,0 | 11,1 | 6,5 | 8,9 | 5,4 | 7,4 | 4,6 | 6,3 | 3,9 | 5,4 | | | | | | 3,5 | 4,8 | | |
| -7,5 | EW HD-W | | | | | | | 11,0 | 13,2 | 8,9 | 10,6 | 7,4 | 8,8 | | | | | | | | | | 6,5 | 7,8 | | |
| | | | | | | | | 8,0 | 11,1 | 6,4 | 8,9 | 5,4 | 7,4 | 4,6 | 6,3 | | | | | | | | 4,5 | 6,2 | | |

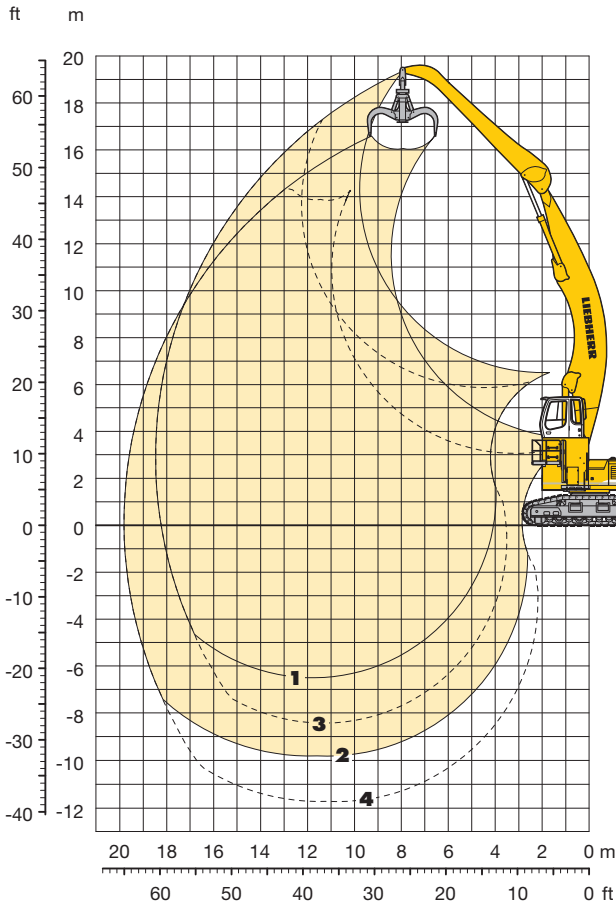
Height Can be slewed through 360° In longitudinal position of undercarriage Max. reach * Limited by hydr. capacity

The lift capacities are stated in metric tonnes (t) on the lifting gear's stick tip, and can be lifted 360° on firm, level supporting surface. Capacities are valid for 600 mm wide triple grouser pads. Indicated loads are based on ISO 10567 standard and do not exceed 75% of tipping or 87% of hydraulic capacity (indicated via *). Lifting capacity of the excavator is limited by machine stability, hydraulic capacity and maximum permissible load of the load hook.

According to European Standard, EN 474-5: In the European Union excavators have to be equipped with an overload warning device, a load diagram and automatic check valves on the hoist cylinders, when they are used for lifting operations which require the use of lifting accessories.

Industrial Attachment

with Industrial-Type Gooseneck Boom 11,50 m



Attachment Envelope

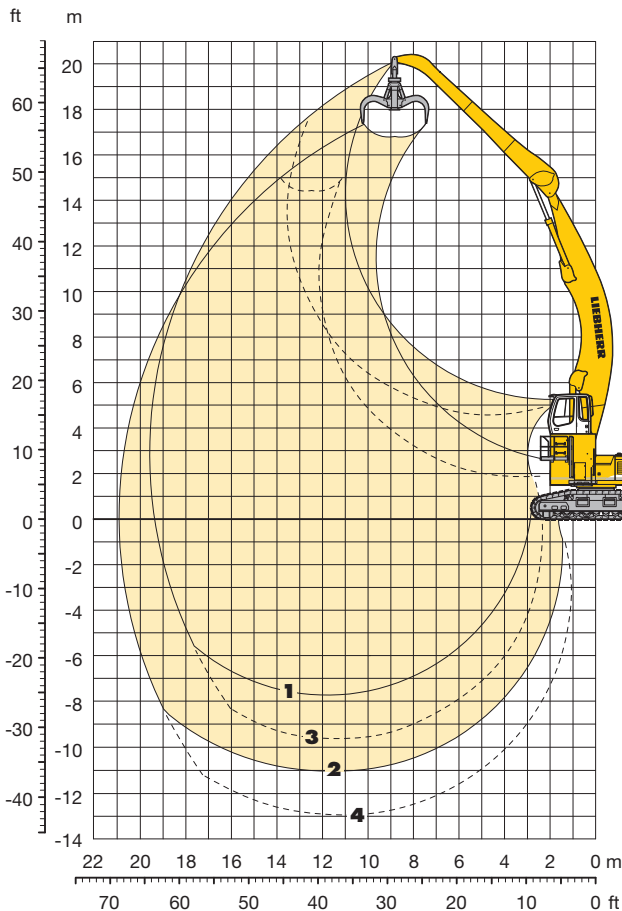
Kinematic variants 3C/3D

- 1** with industrial stick 7,80 m (3D)
- 2** with industrial stick 7,80 m and grapple model 72 C (3D)
- 3** with industrial stick 7,80 m (3C)
- 4** with industrial stick 7,80 m and grapple model 72 C (3C)

Operating Weight and Ground Pressure

Operating weight includes basic machine with rigid cab elevation 2,00 m, counterweight 14,5 t, industrial-type gooseneck boom 11,50 m, industrial stick 7,80 m and grapple model 72 C with 5 semi-closed tines 1,20 m³.

| Undercarriage | | EW | |
|-----------------|--------------------|-------|-------|
| Pad width | mm | 600 | 750 |
| Weight | kg | 70800 | 71800 |
| Ground pressure | kg/cm ² | 1,30 | 1,05 |



Attachment Envelope

Kinematic variants 3C/3D

- 1** with industrial stick 9,00 m (3D)
- 2** with industrial stick 9,00 m and grapple model 72 C (3D)
- 3** with industrial stick 9,00 m (3C)
- 4** with industrial stick 9,00 m and grapple model 72 C (3C)

Operating Weight and Ground Pressure

Operating weight includes basic machine with rigid cab elevation 2,00 m, counterweight 14,5 t, industrial-type gooseneck boom 11,50 m, industrial stick 9,00 m and grapple model 72 C with 5 semi-closed tines 1,20 m³.

| Undercarriage | | EW | |
|-----------------|--------------------|-------|-------|
| Pad width | mm | 600 | 750 |
| Weight | kg | 71200 | 72200 |
| Ground pressure | kg/cm ² | 1,31 | 1,06 |

Lift Capacities

with Industrial-Type Gooseneck Boom 11,50 m

Industrial Stick 7,80 m (Variant 3C)

| ↑ m | Under-carriage | 4,5 m | | 6,0 m | | 7,5 m | | 9,0 m | | 10,5 m | | 12,0 m | | 13,5 m | | 15,0 m | | 16,5 m | | 18,0 m | | 19,5 m | | m | | | | |
|--------|----------------|-------|------|-------|-------|-------|-------|-------|-------|--------|-------|--------|------|--------|------|--------|------|--------|------|--------|-----|--------|--|---|------|------|-------|--|
| | | | | | | | | | | | | | | | | | | | | | | | | | | | | |
| 21,0 | EW | | | | | | | | | | | | | | | | | | | | | | | | | | | |
| 19,5 | EW | | | | | | | | | | | | | | | | | | | | | | | | | | | |
| 18,0 | EW | | | | | | | | | | | | | | | | | | | | | | | | | | | |
| 16,5 | EW | | | | | | | | | | | 6,9* | 6,9* | | | | | | | | | | | | 6,8* | 6,8* | 12,16 | |
| 15,0 | EW | | | | | | | | | | | | | 6,4* | 6,4* | | | | | | | | | | 6,4* | 6,4* | 13,70 | |
| 13,5 | EW | | | | | | | | | | | | | 6,3* | 6,3* | | | | | | | | | | 6,1* | 6,1* | 14,93 | |
| 12,0 | EW | | | | | | | | | | | | | 6,3* | 6,3* | 6,0* | 6,0* | | | | | | | | 5,9* | 5,9* | 15,91 | |
| 10,5 | EW | | | | | | | | | | | 6,8* | 6,8* | 6,4* | 6,4* | 6,1* | 6,1* | 5,8 | 5,9* | | | | | | 5,6 | 5,8* | 16,70 | |
| 9,0 | EW | | | | | | | | | | | 7,0* | 7,0* | 6,6* | 6,6* | 6,2* | 6,2* | 5,7 | 5,9* | | | | | | 5,1 | 5,8* | 17,32 | |
| 7,5 | EW | | | | | | | | | 8,1* | 8,1* | 7,4* | 7,4* | 6,8* | 6,8* | 6,4* | 6,4* | 5,6 | 6,0* | | | | | | 4,7 | 5,6 | 17,79 | |
| 6,0 | EW | | | | | 11,8* | 11,8* | 10,0* | 10,0* | 8,7* | 8,7* | 7,8* | 7,8* | 7,1* | 7,1* | 6,5 | 6,6* | 5,4 | 6,2* | 4,5 | 5,3 | | | | 4,4 | 5,2 | 18,12 | |
| 4,5 | EW | 6,9* | 6,9* | 17,1* | 17,1* | 13,2* | 13,2* | 10,9* | 10,9* | 9,3* | 9,3* | 8,2* | 8,2* | 7,4* | 7,4* | 6,2 | 6,8* | 5,2 | 6,1 | 4,3 | 5,2 | | | | 4,2 | 5,0 | 18,32 | |
| 3,0 | EW | 2,4* | 2,4* | 11,2* | 11,2* | 14,6* | 14,6* | 11,8* | 11,8* | 10,0* | 10,0* | 8,5 | 8,7* | 7,0 | 7,8* | 5,9 | 7,0 | 5,0 | 5,9 | 4,2 | 5,0 | | | | 4,0 | 4,8 | 18,40 | |
| 1,5 | EW | 2,5* | 2,5* | 7,7* | 7,7* | 15,0 | 15,7* | 11,8 | 12,6* | 9,6 | 10,6* | 7,9 | 9,1* | 6,6 | 7,9 | 5,6 | 6,7 | 4,8 | 5,7 | 4,1 | 4,9 | | | | 3,9 | 4,7 | 18,35 | |
| 0 | EW | 3,7* | 3,7* | 7,3* | 7,3* | 14,0 | 14,0* | 11,0 | 13,2 | 9,0 | 10,7 | 7,5 | 8,9 | 6,3 | 7,5 | 5,4 | 6,4 | 4,6 | 5,5 | 4,0 | 4,8 | | | | 3,9 | 4,7 | 18,17 | |
| -1,5 | EW | 5,0* | 5,0* | 7,8* | 7,8* | 12,9* | 12,9* | 10,5 | 12,7 | 8,5 | 10,3 | 7,1 | 8,6 | 6,0 | 7,2 | 5,2 | 6,2 | 4,5 | 5,4 | | | | | | 3,9 | 4,8 | 17,86 | |
| -3,0 | EW | 6,3* | 6,3* | 8,7* | 8,7* | 12,9* | 12,9* | 10,2 | 12,3 | 8,2 | 10,0 | 6,9 | 8,3 | 5,8 | 7,1 | 5,0 | 6,1 | 4,4 | 5,3 | | | | | | 4,0 | 4,9 | 17,41 | |
| -4,5 | EW | | | 9,6* | 9,6* | 13,0 | 13,4* | 10,0 | 12,2 | 8,1 | 9,8 | 6,7 | 8,2 | 5,7 | 6,9 | 5,0 | 6,0 | 4,4 | 5,3 | | | | | | 4,2 | 5,2 | 16,82 | |
| -6,0 | EW | | | 10,6* | 10,6* | 13,1 | 14,3* | 10,0 | 12,2 | 8,1 | 9,8 | 6,7 | 8,1 | 5,7 | 6,9 | 5,0 | 6,0 | | | | | | | | 4,6 | 5,5 | 16,06 | |
| -7,5 | EW | | | | | | | 10,2 | 12,4 | 8,2 | 9,9 | 6,8 | 8,2 | 5,8 | 7,0 | 5,1 | 6,2 | | | | | | | | 5,1 | 6,1 | 15,05 | |
| -9,0 | EW | | | | | | | | | | | | | | | | | | | | | | | | | | | |

Industrial Stick 9,00 m (Variant 3C)

| ↑ m | Under-carriage | 4,5 m | | 6,0 m | | 7,5 m | | 9,0 m | | 10,5 m | | 12,0 m | | 13,5 m | | 15,0 m | | 16,5 m | | 18,0 m | | 19,5 m | | m | | | |
|--------|----------------|-------|-------|-------|-------|-------|-------|-------|-------|--------|-------|--------|------|--------|------|--------|------|--------|------|--------|------|--------|--|---|------|------|-------|
| | | | | | | | | | | | | | | | | | | | | | | | | | | | |
| 21,0 | EW | | | | | | | | | | | | | | | | | | | | | | | | | | |
| 19,5 | EW | | | | | | | | | | | | | | | | | | | | | | | | | | |
| 18,0 | EW | | | | | | | | | | | | | | | | | | | | | | | | | | |
| 16,5 | EW | | | | | | | | | | | | | 5,9* | 5,9* | | | | | | | | | | 5,8* | 5,8* | 13,79 |
| 15,0 | EW | | | | | | | | | | | | | 5,7* | 5,7* | 5,5* | 5,5* | | | | | | | | 5,5* | 5,5* | 15,16 |
| 13,5 | EW | | | | | | | | | | | | | | | 5,4* | 5,4* | | | | | | | | 5,3* | 5,3* | 16,27 |
| 12,0 | EW | | | | | | | | | | | | | 5,6* | 5,6* | 5,4* | 5,4* | 5,3* | 5,3* | | | | | | 5,2* | 5,2* | 17,18 |
| 10,5 | EW | | | | | | | | | | | | | 5,8* | 5,8* | 5,5* | 5,5* | 5,3* | 5,3* | | | | | | 5,0 | 5,2* | 17,91 |
| 9,0 | EW | | | | | | | | | | | | | 5,9* | 5,9* | 5,6* | 5,6* | 5,4* | 5,4* | 4,8 | 5,2* | | | | 4,5 | 5,1* | 18,49 |
| 7,5 | EW | | | | | | | | | | | 6,7* | 6,7* | 6,2* | 6,2* | 5,8* | 5,8* | 5,5* | 5,5* | 4,7 | 5,2* | | | | 4,2 | 5,0 | 18,93 |
| 6,0 | EW | | | | | | | | | 7,9* | 7,9* | 7,1* | 7,1* | 6,5* | 6,5* | 6,0* | 6,0* | 5,5 | 5,6* | 4,6 | 5,3* | | | | 3,9 | 4,7 | 19,24 |
| 4,5 | EW | 20,5* | 20,5* | 14,8* | 14,8* | 11,7* | 11,7* | 9,8* | 9,8* | 8,5* | 8,5* | 7,5* | 7,5* | 6,8* | 6,8* | 6,3* | 6,3* | 5,3 | 5,8* | 4,4 | 5,3 | | | | 3,7 | 4,5 | 19,43 |
| 3,0 | EW | 7,3* | 7,3* | 17,1* | 17,1* | 13,1* | 13,1* | 10,7* | 10,7* | 9,1* | 9,1* | 8,0* | 8,0* | 7,2* | 7,2* | 6,0 | 6,5* | 5,0 | 6,0 | 4,2 | 5,1 | | | | 3,5 | 4,3 | 19,50 |
| 1,5 | EW | 4,5* | 4,5* | 11,5* | 11,5* | 14,4* | 14,4* | 11,6* | 11,6* | 9,8* | 9,8* | 8,1 | 8,5* | 6,8 | 7,5* | 5,7 | 6,7 | 4,8 | 5,7 | 4,0 | 4,9 | | | | 3,5 | 4,2 | 19,45 |
| 0 | EW | 4,5* | 4,5* | 8,8* | 8,8* | 14,4 | 15,4* | 11,3 | 12,3* | 9,2 | 10,3* | 7,6 | 8,9* | 6,3 | 7,6 | 5,4 | 6,4 | 4,5 | 5,5 | 3,9 | 4,7 | | | | 3,4 | 4,2 | 19,28 |
| -1,5 | EW | 5,2* | 5,2* | 8,3* | 8,3* | 13,4 | 14,4* | 10,5 | 12,7 | 8,6 | 10,3 | 7,1 | 8,6 | 6,0 | 7,2 | 5,1 | 6,2 | 4,4 | 5,3 | 3,8 | 4,6 | | | | 3,4 | 4,2 | 18,99 |
| -3,0 | EW | 6,0* | 6,0* | 8,6* | 8,6* | 12,9 | 13,3* | 10,0 | 12,2 | 8,1 | 9,9 | 6,8 | 8,2 | 5,7 | 6,9 | 4,9 | 5,9 | 4,2 | 5,1 | 3,7 | 4,5 | | | | 3,5 | 4,3 | 18,57 |
| -4,5 | EW | 6,9* | 6,9* | 9,1* | 9,1* | 12,6 | 13,2* | 9,7 | 11,9 | 7,9 | 9,6 | 6,5 | 8,0 | 5,5 | 6,8 | 4,8 | 5,8 | 4,1 | 5,1 | 3,6 | 4,5 | | | | 3,6 | 4,5 | 18,02 |
| -6,0 | EW | 7,7* | 7,7* | 9,8* | 9,8* | 12,5 | 13,5* | 9,6 | 11,8 | 7,7 | 9,5 | 6,4 | 7,8 | 5,4 | 6,7 | 4,7 | 5,8 | 4,1 | 5,1 | | | | | | 3,9 | 4,7 | 17,31 |
| -7,5 | EW | | | 10,6* | 10,6* | 12,7 | 14,2* | 9,7 | 11,8 | 7,7 | 9,5 | 6,4 | 7,8 | 5,5 | 6,7 | 4,7 | 5,8 | | | | | | | | 4,2 | 5,2 | 16,44 |
| -9,0 | EW | | | | | | | 9,9 | 12,0 | 7,9 | 9,6 | 6,5 | 8,0 | 5,6 | 6,8 | | | | | | | | | | 5,0 | 6,1 | 14,67 |

Height
 Can be slewed through 360°
 In longitudinal position of undercarriage
 Max. reach
 * Limited by hydr. capacity

The lift capacities are stated in metric tonnes (t) on the lifting gear's stick tip, and can be lifted 360° on firm, level supporting surface. Capacities are valid for 600 mm wide triple grouser pads. Indicated loads are based on ISO 10567 standard and do not exceed 75% of tipping or 87% of hydraulic capacity (indicated via *). Lifting capacity of the excavator is limited by machine stability, hydraulic capacity and maximum permissible load of the load hook.

According to European Standard, EN 474-5: In the European Union excavators have to be equipped with an overload warning device, a load diagram and automatic check valves on the hoist cylinders, when they are used for lifting operations which require the use of lifting accessories.

Lift Capacities

with Industrial-Type Gooseneck Boom 11,50 m

Industrial Stick 7,80 m (Variant 3D)

| ↑ m | Under-carriage | 4,5 m | | 6,0 m | | 7,5 m | | 9,0 m | | 10,5 m | | 12,0 m | | 13,5 m | | 15,0 m | | 16,5 m | | 18,0 m | | 19,5 m | | m | | | | |
|--------|----------------|-------|-------|-------|-------|-------|-------|-------|-------|--------|-------|--------|------|--------|------|--------|------|--------|------|--------|-----|--------|--|---|------|------|-------|--|
| | | | | | | | | | | | | | | | | | | | | | | | | | | | | |
| 21,0 | EW | | | | | | | | | | | | | | | | | | | | | | | | | | | |
| 19,5 | EW | | | | | | | | | | | | | | | | | | | | | | | | | | | |
| 18,0 | EW | | | | | | | 9,7* | 9,7* | | | | | | | | | | | | | | | | 9,1* | 9,1* | 10,16 | |
| 16,5 | EW | | | | | | | | | 8,5* | 8,5* | 8,0* | 8,0* | | | | | | | | | | | | 7,9* | 7,9* | 12,16 | |
| 15,0 | EW | | | | | | | | | 8,3* | 8,3* | 7,7* | 7,7* | 7,3* | 7,3* | | | | | | | | | | 7,3* | 7,3* | 13,70 | |
| 13,5 | EW | | | | | | | | | 8,3* | 8,3* | 7,7* | 7,7* | 7,2* | 7,2* | | | | | | | | | | 6,9* | 6,9* | 14,93 | |
| 12,0 | EW | | | | | | | | | 8,4* | 8,4* | 7,7* | 7,7* | 7,2* | 7,2* | 6,8* | 6,8* | | | | | | | | 6,3 | 6,6* | 15,91 | |
| 10,5 | EW | | | | | | | 9,5* | 9,5* | 8,6* | 8,6* | 7,9* | 7,9* | 7,3* | 7,3* | 6,8* | 6,8* | 5,8 | 6,5* | | | | | | 5,6 | 6,4* | 16,70 | |
| 9,0 | EW | | | | | | | 10,0* | 10,0* | 8,9* | 8,9* | 8,1* | 8,1* | 7,4* | 7,4* | 6,9* | 6,9* | 5,7 | 6,5* | | | | | | 5,1 | 6,0 | 17,32 | |
| 7,5 | EW | | | 15,0* | 15,0* | 12,4* | 12,4* | 10,6* | 10,6* | 9,3* | 9,3* | 8,4* | 8,4* | 7,6* | 7,6* | 6,8 | 7,0* | 5,6 | 6,5 | | | | | | 4,7 | 5,6 | 17,79 | |
| 6,0 | EW | 23,1* | 23,1* | 17,0* | 17,0* | 13,6* | 13,6* | 11,4* | 11,4* | 9,8* | 9,8* | 8,7* | 8,7* | 7,9* | 7,9* | 6,5 | 7,2* | 5,4 | 6,3 | 4,5 | 5,3 | | | | 4,4 | 5,2 | 18,12 | |
| 4,5 | EW | 6,9* | 6,9* | 19,1* | 19,1* | 14,8* | 14,8* | 12,1* | 12,1* | 10,4* | 10,4* | 9,1 | 9,1* | 7,5 | 8,1* | 6,2 | 7,3 | 5,2 | 6,1 | 4,3 | 5,2 | | | | 4,2 | 5,0 | 18,32 | |
| 3,0 | EW | 2,4* | 2,4* | 11,2* | 11,2* | 15,9* | 15,9* | 12,9 | 12,9* | 10,3 | 10,9* | 8,5 | 9,5* | 7,0 | 8,3 | 5,9 | 7,0 | 5,0 | 5,9 | 4,2 | 5,0 | | | | 4,0 | 4,8 | 18,40 | |
| 1,5 | EW | 2,5* | 2,5* | 7,7* | 7,7* | 15,0 | 16,7* | 11,8 | 13,5* | 9,6 | 11,3* | 7,9 | 9,4 | 6,6 | 7,9 | 5,6 | 6,7 | 4,8 | 5,7 | 4,1 | 4,9 | | | | 3,9 | 4,7 | 18,35 | |
| 0 | EW | 3,7* | 3,7* | 7,3* | 7,3* | 14,0 | 14,0* | 11,0 | 13,2 | 9,0 | 10,7 | 7,5 | 8,9 | 6,3 | 7,5 | 5,4 | 6,4 | 4,6 | 5,5 | 4,0 | 4,8 | | | | 3,9 | 4,7 | 18,17 | |
| -1,5 | EW | 5,0* | 5,0* | 7,8* | 7,8* | 12,9* | 12,9* | 10,5 | 12,7 | 8,5 | 10,3 | 7,1 | 8,6 | 6,0 | 7,2 | 5,2 | 6,2 | 4,5 | 5,4 | | | | | | 3,9 | 4,8 | 17,86 | |
| -3,0 | EW | | | 8,7* | 8,7* | 12,9* | 12,9* | 10,2 | 12,3 | 8,2 | 10,0 | 6,9 | 8,3 | 5,8 | 7,1 | 5,0 | 6,1 | 4,4 | 5,3 | | | | | | 4,0 | 4,9 | 17,41 | |
| -4,5 | EW | | | | | 13,0 | 13,4* | 10,0 | 12,2 | 8,1 | 9,8 | 6,7 | 8,2 | 5,7 | 6,9 | 5,0 | 6,0 | 4,4 | 5,3 | | | | | | 4,3 | 5,2 | 16,82 | |
| -6,0 | EW | | | | | | | 10,0 | 12,2 | 8,1 | 9,8 | 6,7 | 8,1 | 5,7 | 6,9 | | | 4,4 | 5,3 | | | | | | 5,2 | 6,3 | 14,59 | |
| -7,5 | EW | | | | | | | | | | | | | | | | | | | | | | | | | | | |
| -9,0 | EW | | | | | | | | | | | | | | | | | | | | | | | | | | | |

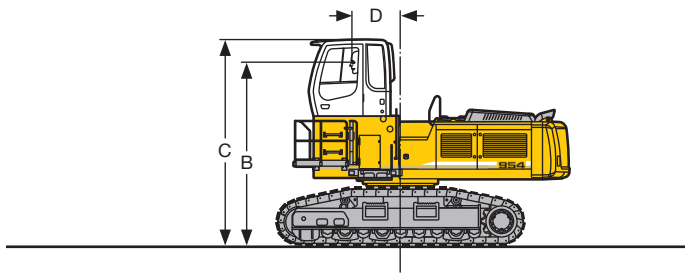
Industrial Stick 9,00 m (Variant 3D)

| ↑ m | Under-carriage | 4,5 m | | 6,0 m | | 7,5 m | | 9,0 m | | 10,5 m | | 12,0 m | | 13,5 m | | 15,0 m | | 16,5 m | | 18,0 m | | 19,5 m | | m | | | | |
|--------|----------------|-------|-------|-------|-------|-------|-------|-------|-------|--------|-------|--------|------|--------|------|--------|------|--------|------|--------|------|--------|--|---|------|------|-------|------|
| | | | | | | | | | | | | | | | | | | | | | | | | | | | | |
| 21,0 | EW | | | | | | | | | | | | | | | | | | | | | | | | | | | |
| 19,5 | EW | | | | | | | | | | | | | | | | | | | | | | | | | 8,6* | 8,6* | 9,81 |
| 18,0 | EW | | | | | | | | | 8,0* | 8,0* | 7,5* | 7,5* | | | | | | | | | | | | 7,5* | 7,5* | 12,06 | |
| 16,5 | EW | | | | | | | | | | | 7,2* | 7,2* | 6,8* | 6,8* | | | | | | | | | | 6,8* | 6,8* | 13,79 | |
| 15,0 | EW | | | | | | | | | | | 7,1* | 7,1* | 6,7* | 6,7* | 6,3* | 6,3* | | | | | | | | 6,3* | 6,3* | 15,16 | |
| 13,5 | EW | | | | | | | | | | | 7,0* | 7,0* | 6,6* | 6,6* | 6,2* | 6,2* | | | | | | | | 6,0* | 6,0* | 16,27 | |
| 12,0 | EW | | | | | | | | | | | 7,1* | 7,1* | 6,6* | 6,6* | 6,2* | 6,2* | 5,9* | 5,9* | | | | | | 5,5 | 5,8* | 17,18 | |
| 10,5 | EW | | | | | | | | | 7,9* | 7,9* | 7,2* | 7,2* | 6,7* | 6,7* | 6,3* | 6,3* | 5,9* | 5,9* | | | | | | 5,0 | 5,7* | 17,91 | |
| 9,0 | EW | | | | | | | | | 8,2* | 8,2* | 7,5* | 7,5* | 6,9* | 6,9* | 6,4* | 6,4* | 6,0 | 6,0* | 4,8 | 5,7* | | | | 4,5 | 5,3 | 18,49 | |
| 7,5 | EW | | | | | | | 9,7* | 9,7* | 8,6* | 8,6* | 7,8* | 7,8* | 7,1* | 7,1* | 6,5* | 6,5* | 5,8 | 6,1* | 4,7 | 5,6 | | | | 4,2 | 5,0 | 18,93 | |
| 6,0 | EW | | | 15,0* | 15,0* | 12,3* | 12,3* | 10,4* | 10,4* | 9,1* | 9,1* | 8,1* | 8,1* | 7,3* | 7,3* | 6,7 | 6,7* | 5,5 | 6,2* | 4,6 | 5,4 | | | | 3,9 | 4,7 | 19,24 | |
| 4,5 | EW | 23,6* | 23,6* | 17,1* | 17,1* | 13,5* | 13,5* | 11,2* | 11,2* | 9,6* | 9,6* | 8,5* | 8,5* | 7,6* | 7,6* | 6,4 | 6,9* | 5,3 | 6,2 | 4,4 | 5,3 | | | | 3,7 | 4,5 | 19,43 | |
| 3,0 | EW | 7,3* | 7,3* | 19,0* | 19,0* | 14,7* | 14,7* | 12,0* | 12,0* | 10,2* | 10,2* | 8,8 | 8,9* | 7,2 | 7,9* | 6,0 | 7,1 | 5,0 | 6,0 | 4,2 | 5,1 | | | | 3,5 | 4,3 | 19,50 | |
| 1,5 | EW | 4,5* | 4,5* | 11,5* | 11,5* | 15,7* | 15,7* | 12,3 | 12,7* | 9,9 | 10,6* | 8,1 | 9,2* | 6,7 | 8,0 | 5,7 | 6,7 | 4,8 | 5,7 | 4,0 | 4,9 | | | | 3,4 | 4,2 | 19,45 | |
| 0 | EW | 4,5* | 4,5* | 8,8* | 8,8* | 14,4 | 16,4* | 11,3 | 13,2* | 9,2 | 10,9 | 7,6 | 9,0 | 6,3 | 7,6 | 5,3 | 6,4 | 4,5 | 5,5 | 3,9 | 4,7 | | | | 3,4 | 4,2 | 19,28 | |
| -1,5 | EW | 5,2* | 5,2* | 8,3* | 8,3* | 13,4 | 14,4* | 10,5 | 12,7 | 8,6 | 10,3 | 7,1 | 8,5 | 6,0 | 7,2 | 5,1 | 6,2 | 4,4 | 5,3 | 3,8 | 4,6 | | | | 3,4 | 4,2 | 18,99 | |
| -3,0 | EW | 6,0* | 6,0* | 8,6* | 8,6* | 12,9 | 13,3* | 10,0 | 12,2 | 8,1 | 9,9 | 6,8 | 8,2 | 5,7 | 6,9 | 4,9 | 5,9 | 4,2 | 5,1 | 3,7 | 4,5 | | | | 3,5 | 4,3 | 18,57 | |
| -4,5 | EW | | | 9,1* | 9,1* | 12,6 | 13,2* | 9,7 | 11,9 | 7,9 | 9,6 | 6,5 | 8,0 | 5,5 | 6,8 | 4,8 | 5,8 | 4,1 | 5,1 | 3,6 | 4,5 | | | | 3,6 | 4,5 | 18,02 | |
| -6,0 | EW | | | | | 12,5 | 13,5* | 9,6 | 11,8 | 7,7 | 9,5 | 6,4 | 7,9 | 5,4 | 6,7 | 4,7 | 5,8 | 4,1 | 5,1 | | | | | | 3,9 | 4,8 | 17,08 | |
| -7,5 | EW | | | | | | | | | 7,7 | 9,5 | 6,4 | 7,9 | 5,5 | 6,7 | | | | | | | | | | 5,3 | 6,5 | 13,78 | |
| -9,0 | EW | | | | | | | | | | | | | | | | | | | | | | | | | | | |

Height
 Can be slewed through 360°
 In longitudinal position of undercarriage
 Max. reach
 * Limited by hydr. capacity

The lift capacities are stated in metric tonnes (t) on the lifting gear's stick tip, and can be lifted 360° on firm, level supporting surface. Capacities are valid for 600 mm wide triple grouser pads. Indicated loads are based on ISO 10567 standard and do not exceed 75% of tipping or 87% of hydraulic capacity (indicated via *). Lifting capacity of the excavator is limited by machine stability, hydraulic capacity and maximum permissible load of the load hook. According to European Standard, EN 474-5: In the European Union excavators have to be equipped with an overload warning device, a load diagram and automatic check valves on the hoist cylinders, when they are used for lifting operations which require the use of lifting accessories.

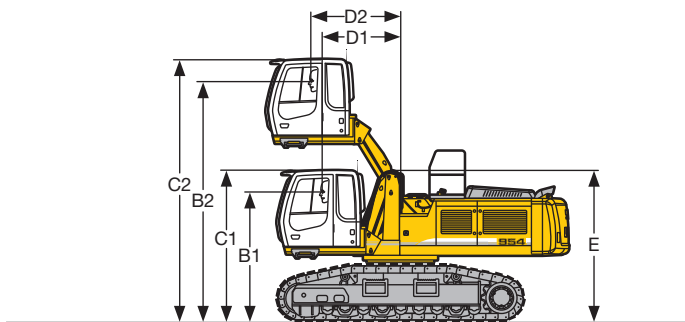
Choice of Cab Elevation and Cab Protection



Rigid Cab Elevation

| | EW mm | HD-W mm | EW mm | HD-W mm |
|--------|----------|------------|----------|------------|
| Height | 1200 | 1200 | 2000 | 2000 |
| B | 4165 | 4020 | 4965 | 4820 |
| C | 4660 | 4515 | 5460 | 5315 |
| D | 1105 | 1105 | 1105 | 1105 |

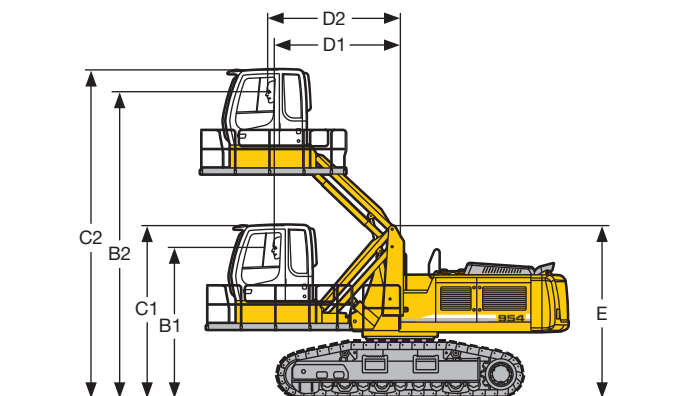
Additional weight with fixed cab elevation 2000 mm in relation to cab elevation 1200 mm: 200 kg



Hydraulic Cab Elevation

| | EW mm | HD-W mm |
|----|----------|------------|
| B1 | 2960 | 2820 |
| B2 | 5460 | 5320 |
| C1 | 3460 | 3320 |
| C2 | 5960 | 5820 |
| D1 | 1795 | 1795 |
| D2 | 2050 | 2050 |
| E | 3450 | 3310 |

Additional weight in relation to cab elevation 1200 mm: 600 kg



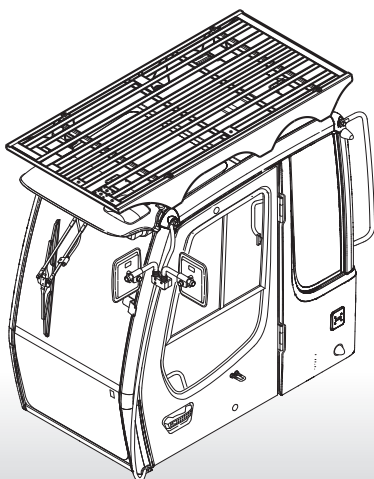
Hydraulic Cab Elevation (Parallelogram)

+ Intermediate Piece 0,5 m

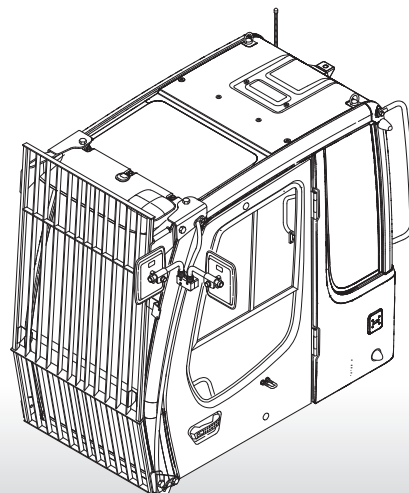
| | EW mm | HD-W mm |
|----|----------|------------|
| B1 | 3463 | 3320 |
| B2 | 7033 | 6890 |
| C1 | 3960 | 3815 |
| C2 | 7530 | 7385 |
| D1 | 2890 | 2890 |
| D2 | 3039 | 3039 |
| E | 3950 | 3805 |

Additional weight in relation to cab elevation 1200 mm: 1600 kg

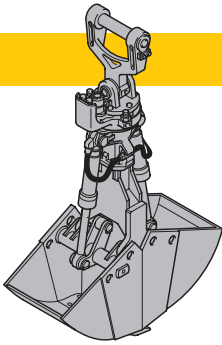
FOPS Guard



Front Guard



Variety of Tools

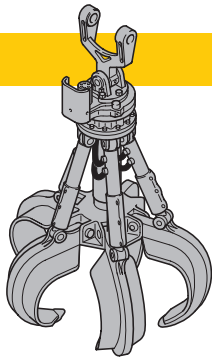


Shells for Loose Material

Clamshell Model 22 C

Shells for loose material with cutting edge (without teeth)

| | | | |
|-------------------------|----------------|------|------|
| Cutting width of shells | mm | 1500 | 1500 |
| Capacity | m ³ | 1,85 | 2,20 |
| Total weight | kg | 2500 | 2600 |



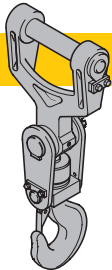
Multiple Tine Grapples

open tines

semi-closed tines

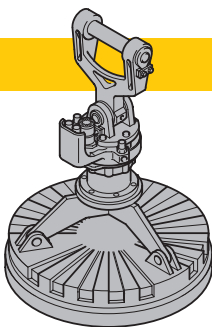
closed tines

| | | | | | | | | | | | |
|--|----------|----------------|------|------|------|------|------|------|------|------|------|
| Grapple Model 72 C (4 tines) | Capacity | m ³ | 1,20 | 1,40 | 1,60 | 1,20 | 1,40 | 1,60 | 1,20 | 1,40 | 1,60 |
| | Weight | kg | 2090 | 2140 | 2160 | 2410 | 2470 | 2510 | 2700 | 2760 | 2810 |
| Grapple Model 72 C (5 tines) | Capacity | m ³ | 1,20 | 1,40 | 1,60 | 1,20 | 1,40 | 1,60 | 1,20 | 1,40 | 1,60 |
| | Weight | kg | 2520 | 2570 | 2590 | 2920 | 2990 | 3040 | 3020 | 3100 | 3160 |



Crane Hook with Suspension

| | | |
|--------------|----|-----|
| Max. load | t | 32 |
| Total weight | kg | 180 |



Electro Magnets with Suspension

Magnet information on request

Equipment



Undercarriage

S O

| | | |
|--|---|---|
| Two-stage travel motors | • | |
| Three track guide per track | • | |
| Lifetime lubricated track rollers | • | |
| Hydraulic hose protection | • | |
| Idler protection | • | |
| Tracks sealed and greased | • | |
| Different undercarriage versions EW + HD-W | | • |
| Different track pad width | | • |
| Four track guide only HD-W | | • |
| Reinforced cover | | • |
| Streng. bottom sheet center part only EW | | • |



Uppercarriage

S O

| | | |
|--|---|---|
| Maintenance-free swing brake lock | • | |
| Handrails, Non slip surfaces | • | |
| Main switch for electric circuit | • | |
| Engine hood with lift help | • | |
| Pedal controlled positioning swing brake | • | |
| Sound insulation | • | |
| Maintenance-free HD-batteries | • | |
| Lockable tool box | • | |
| Tool kit | • | |
| Electric fuel tank filler pump | | • |
| Customized colors | | • |



Hydraulics

S O

| | | |
|--|---|---|
| Hydraulic tank shut-off valve | • | |
| Pressure compensation | • | |
| Hook up for pressure checks | • | |
| Pressure storage for controlled lowering of attachments with engine turned off | • | |
| Filter with partial micro filtration (5 µm) | • | |
| Electronic pump regulation | • | |
| Stepless mode system (ECO) | • | |
| Flow compensation | • | |
| Four different power modes adjustable | • | |
| Extra hydr. control for hydr. swivel | | • |
| Full flow micro filtration | | • |
| Bio degradable hydraulic oil | | • |
| Additional hydraulic circuits | | • |



Engine

S O

| | | |
|---|---|---|
| After-cooled | • | |
| Unit pump system | • | |
| Turbo charger | • | |
| Dry-type air cleaner w/pre-cleaner, main and safety element | • | |
| Air filter with automatic dust ejector | • | |
| Sensor controlled engine idling | • | |
| Engine cold starting aid | | • |



Operator's Cab

S O

| | | |
|--|---|---|
| Storage tray | • | |
| Displays for engine operating condition | • | |
| Mechanical hour meters, readable from outside the cab | • | |
| Roof hatch | • | |
| All-round adjustable roof vent | | |
| 6-way adjustable seat | • | |
| Seat and consoles independently adjustable | • | |
| Removable customized foot mat | • | |
| Dome light | • | |
| Cab heater with defroster | • | |
| Cloth hook | • | |
| Air conditioning | • | |
| Rain hood over front window opening | • | |
| All tinted windows | • | |
| Door with sliding window | • | |
| Sun roller blind | • | |
| Wiper/washer | • | |
| Cigarette lighter and ashtray | • | |
| Airpressure operator seat with heating and head-rest | | • |
| Extinguisher | | • |
| Electric cool box | | • |
| Bullet proof window (fixed installation – can not be opened) | | • |
| Stereo radio | | • |
| Preparation for radio installation | | • |
| Beacon | | • |
| Auxiliary heating | | • |
| Electronic drive away lock | | • |
| Additional flood lights | | • |



Attachment

S O

| | | |
|---|---|---|
| Flood lights | • | |
| Hydr. lines for clam operation in stick | • | |
| Sealed pivots | • | |
| Liebherr semi-automatic central lubrication system | • | |
| Safety check valves on hoist cylinder, regenerative | • | |
| Safety check valves on stick cylinder, regenerative | • | |
| Hose quick connection | • | |
| Cylinders with shock absorber | • | |
| Hydraulic or manual quick change tool adapter | | • |
| Industrial-type gooseneck sticks with remote hydraulic pin puller | | • |
| Safety lift hook | | • |
| Liebherr line of clams | | • |
| Liebherr fully-automatic central lubrication system | | • |
| Customized colors | | • |
| Overload warning device | | • |

S = Standard, O = Option

Options and/or special attachments, supplied by vendors other than Liebherr, are only to be installed with the knowledge and approval of Liebherr to retain warranty.

Liebherr-France SAS

2, avenue Joseph Rey, B.P. 90287, F-68005 Colmar Cedex
 ☎ +33 389 21 30 30, Fax +33 389 21 37 93
 www.liebherr.com, E-Mail: info.lfr@liebherr.com