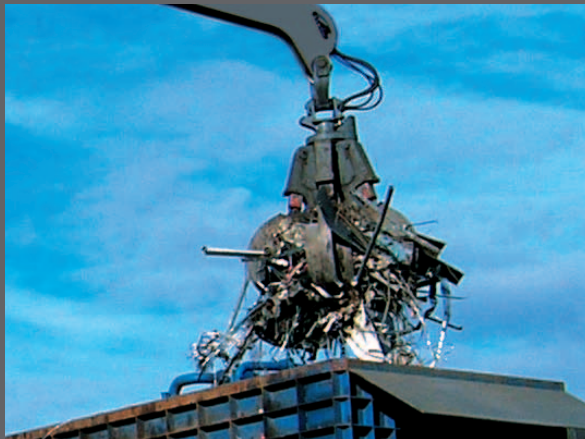


ATLAS

Material Handler 520MH

FAST. RELIABLE. VERSATILE.

520MH



53 - 57 t



183 kW (248 hp)



18,1 - 21,9 m



Technical Information

ENGINE

Power according to ISO 9249...183kW (248 hp)	Cylinder capacity7100 cm ³	Air filterDry air filter
RPM2000/min	Number of cylinders.....6	Battery 2x 12V/143Ah
Make.....Deutz TCD2013L062V	Borehole/lift.....101/126	Alternator24 V/55Ah
Design.....Turbocharger/ intercooler	Cooling system.....Water-cooled	Starter.....24V/4,8kW

HYDRAULIC SYSTEM

• AWE 5 system (load sensing)	• Suction valves for all work functions	• Overload warning device
• 2 Load limit controlled high-performance piston pumps	• Load-retaining and fine-drop valve in lifting circuit	
• Fuel efficient flow-on-demand control	• Pipe break protection valves for lifting cylinders	• Max. oil flow2 x 380 l/min
• Sensitive, proportional, independent control	• Grab and grab-rotating function	• Max. operating pressure.....380 bar
• Primary and secondary protection against overload	• 2 additional circuits for additional consumer loads possible	• Operating modes: 3 pre-programmed modes (Fine, Eco, Power)

SWING ASSEMBLY

• Swing motor	Axial piston motor with priority valve	• Max. swing speed.....5,2/min
• Swing gear:	Planetary transmission	• Swing torque 164kNm
• Swing brake:	Automatic multidisc brake	

TRACTION DRIVE AND BRAKES

• Variable displacement motor	• Automotive drive and cruise control	• Dual circuit brake systemdrum brake
• Power-shift transmission	• Maximum speed16 km/h	• Parking brakespring-loaded brake
• Double-acting brake valve	• Terrain speed.....5 km/h	
• Driving direction pre-selection via switch in joystick	• Crawling speed1km/h	

UNDERCARRIAGE

• 70 t special excavator axles	• Steering axle with automatic oscillating axle locking	• 8 tyres Solid rubber tyres.....12.00 - 24
--------------------------------	---	---

FILL CAPACITIES

• Fuel tank..... 920 Liter	• Engine oil..... 21 Liter	• Hydraulics system1400 litres
• Cooling system 53 Liter	• Hydraulic tank 720 Liter	

DRIVER'S CAB

• Extra-wide entrance	CONTROL:	CLIMATE CONTROL:
• Meets latest safety standards	• Ergonomic joysticks	• Air conditioning equipped as standard
• Spacious leg room	• Steering via potentiometer	• Very good air distribution through optimally arranged nozzles
• Excellent circumferential visibility	• Indicators, controls and operating switches are clearly arranged	
• Preparation for radio installation with mute function		SOUND LEVELS:
• Vario cab can be driven 3m high and 2.5 m forwards	MONITORING:	• ISO6396 (L _p A) in driver's cab70 dB(A)
	• Operating data display screen	• 2000/14EG (L _w A) ambience level.....105 dB(A)
DRIVER'S SEAT:	• Automatic system for monitoring, warning and storage of data	
• Air-cushioned comfort seat (optional seat heating)		
• Arm rests and lumbar support		
• Seat adjustable separately from console		

Equipment

OPERATINGWEIGHTS

	LOADING BOOM 9,80 m (C94.5i)	LOADING BOOM 12,10 m (C94.6i) / (C94.16iD)
	Stick 7,50 m (D94.15i)	Stick 9,24 m (D94.16i)
4 outriggers	53 t	54 t
1 m pylon	55 t	56 t
2 m pylon	56 t	57 t

Operating weight with driver, solid rubber tyres, completely filled implement and 1.5 t for attachments

EQUIPMENT

BASIC DEVICE ATLAS 520MH

- Material Handler 520MH with quadruple outriggers and 2 lifting cylinders (A 94.32)

Hydraulics:

- Grab and grab-rotating function
- Accumulator for emergency lowering of the arm system
- Pipe-break protection valves for lifting cylinders
- Overload warning device
- Cylinder end-position damping

- Rear view security camera with 5 inch LCD-colour monitor
- Seat can be adjusted separately from console

Booms:

- Loading boom 9,80 m (C94.5i)
- Loading boom 12,10 m (C94.6i)
- Loading boom 12,10 m (Banana) (C94.6iD)

- Ready for electric cooling box
- Different options for storage, compartment for documents
- Bottle holder
- Vario cab can be driven 3m high and 2.5 m forwards

Sticks:

- Stick 7,50 m (D 94.15i) für (C94.15i)
- Stick 9,24 m (D 94.16i) für (C94.16i/ C94.16iD)

Cab:

- Air conditioning
- Preparation for radio installation with mute function
- Steering via potentiometer
- Seat adjustable separately from console
- Heat-insulating glass, tinted windows
- Automotive driving and cruise control
- Operating data display screen

Equipment:

- Combined lubricating points for swing bearing and arm equipment

STANDARD EQUIPMENTG:

Engine:

- Automatic idle
- Diesel pre-filter
- Engine monitoring

Undercarriage:

- Tool box in the undercarriage

ADDITIONAL EQUIPMENT

Engine:

- Refueling pump
- Engine speed adjustment via potentiometer
- Auxiliary heating
- Cold start assistance

Cab:

- Cab protection guard
- Beacon light
- Heated driver's seat
- Radio/CD/MP3, front AUX in, USB
- Cab elevation
- GPS/GSM Telemetriebox, for monitoring of operating data, fuel consumption, location
- Head rest
- Working lights, Xenon-version
- Electric cooling box

Other special equipment: See price list

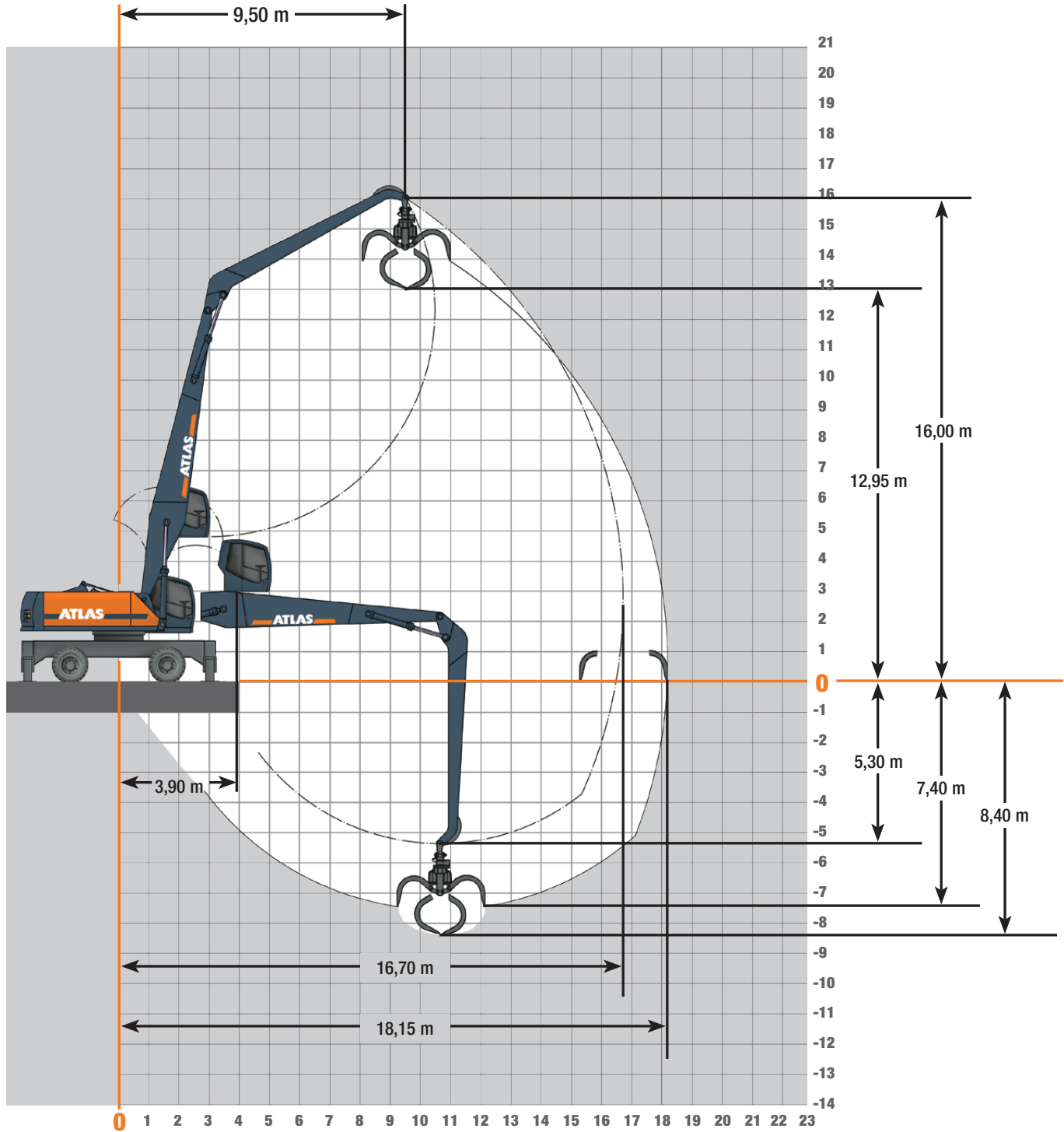
Hydraulics:

- Hydraulic kit, to operate front and rear supports separately
- Hydr. adaptor kit, switch supports individually
- Bio oil

ATTACHMENTS

- Clamshell grab
- Load hook
- Log grab
- Orange peel grab
- Load lifting magnet

Work Areas Loading boom 9,80 m (C94.5i) with Stick 7,50 m (D94.15i)



Lifting Capacities Loading boom 9,80 m (C94.5i) and Stick 7,50 m (D94.15i)

Lifting Capacities Loading boom 9,80 m (C94.5i) with Stick 7,50 m (D 94.15i). Max. reach 16,70 m

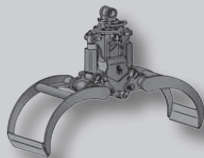
HEIGHT		6,0 m		7,5 m		9,0 m		10,5 m		12,0 m		13,5 m		15,0 m		16,5 m		18,0 m		19,5 m	
		FRONT	LATERAL	FRONT	LATERAL	FRONT	LATERAL	FRONT	LATERAL	FRONT	LATERAL	FRONT	LATERAL	FRONT	LATERAL	FRONT	LATERAL	FRONT	LATERAL	FRONT	LATERAL
18,0 m	outriggers down																				
	outriggers up																				
16,5 m	outriggers down																				
	outriggers up																				
15,0 m	outriggers down								8,5*	8,5*											
	outriggers up								8,5*	6,9											
13,5 m	outriggers down								8,2*	8,2*	7,8*	7,8*									
	outriggers up								8,2*	7,1	7,0	5,6									
12,0 m	outriggers down								8,2*	8,2*	7,7*	7,3*	7,3*								
	outriggers up								8,2*	7,1	7,0	5,6	5,7	4,5							
10,5 m	outriggers down								8,3*	8,3*	7,8*	7,8*	7,3*	7,3*							
	outriggers up								8,3*	7,0	7,0	5,6	5,7	4,5							
9,0 m	outriggers down								8,6*	8,6*	8,0*	8,0*	7,4*	7,4*	7,0*	7,0*					
	outriggers up								8,6	6,9	6,9	5,5	5,6	4,4	4,7	3,6					
7,5 m	outriggers down					10,1*	10,1*	9,0*	9,1*	8,3*	8,3*	7,6*	7,6*	7,1*	7,1*						
	outriggers up					10,1*	8,5	8,4	6,6	6,7	5,3	5,5	4,3	4,6	3,6						
6,0 m	outriggers down			12,7*	12,7*	10,9*	10,9*	9,6*	9,6*	8,6*	8,6*	7,8*	7,8*	7,2*	7,2*						
	outriggers up			12,7*	10,6	10,2	8,0	8,1	6,3	6,5	5,1	5,4	4,2	4,5	3,5						
4,5 m	outriggers down	18,0*	18,0*	14,2*	14,2*	11,8*	11,8*	10,2*	10,2*	9,0*	9,0*	8,1*	8,1*	7,4*	7,4*						
	outriggers up	17,5	13,3	12,6	9,780	9,7	7,5	7,7	6,0	6,3	4,9	5,2	4,0	4,4	3,4						
3,0 m	outriggers down	15,3*	15,3*	15,6*	15,6*	12,7*	12,7*	10,7*	10,7*	9,4*	9,4*	8,3*	8,3*	7,5*	7,5*	6,7*	6,7*				
	outriggers up	15,3*	11,9	11,7	9,0	9,1	7,0	7,4	5,7	6,0	4,7	5,1	3,9	4,3	3,3	3,7	2,8				
1,5 m	outriggers down	5,5*	5,5*	16,6*	16,6*	13,3*	13,3*	11,2*	11,2*	9,6*	9,6*	8,5*	8,5*	7,5*	7,5*						
	outriggers up	5,5*	5,5*	11,0	8,3	8,6	6,6	7,0	5,4	5,8	4,4	4,9	3,7	4,2	3,2						
0 m	outriggers down	4,7*	4,7*	13,5*	13,5*	13,7*	13,7*	11,4*	11,4*	9,8*	9,8*	8,6*	8,6*	7,5*	7,5*						
	outriggers up	4,7*	4,7*	10,5	7,8	8,3	6,2	6,8	5,1	5,6	4,3	4,8	3,6	4,1	3,1						
-1,5 m	outriggers down	5,2*	5,2*	11,3*	11,3*	13,7*	13,7*	11,5*	11,5*	9,8*	9,8*	8,5*	8,5*	7,4*	7,4*						
	outriggers up	5,2*	5,2*	10,2	7,5	8,0	6,0	6,6	4,9	5,5	4,1	4,7	3,5	4,1	3,0						
-3,0 m	outriggers down	6,2*	6,2*	11,3*	11,3*	13,4*	13,4*	11,2*	11,2*	9,5*	9,5*	8,2*	8,2*	7,0*	7,0*						
	outriggers up	6,2*	6,2*	10,0	7,4	7,9	5,9	6,5	4,8	5,4	4,1	4,7	3,5	4,1	3,0						
-4,5 m	outriggers down					12,6*	12,6*	10,6*	10,6*	9,0*	9,0*	7,6*	7,6*								
	outriggers up					7,9	5,9	6,443	4,8	5,4	4,0	4,7	3,5								
-6,0 m	outriggers down																				
	outriggers up																				

The specified max. loading capacities in tonnes include a stability of 33% or are calculated at 87% of the hydraulic lifting power, as per ISO10567. These values are applicable at the tip of the arm with optimum positioning of the corresponding arm system. * Value limited due to hydraulics. Weights of attached load carrying accessories (grab, magnet, load hook, etc.) are not included with the load carrying values.

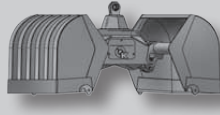
Attachments



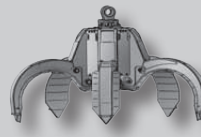
Load hook



Log grab



Clamshell grab

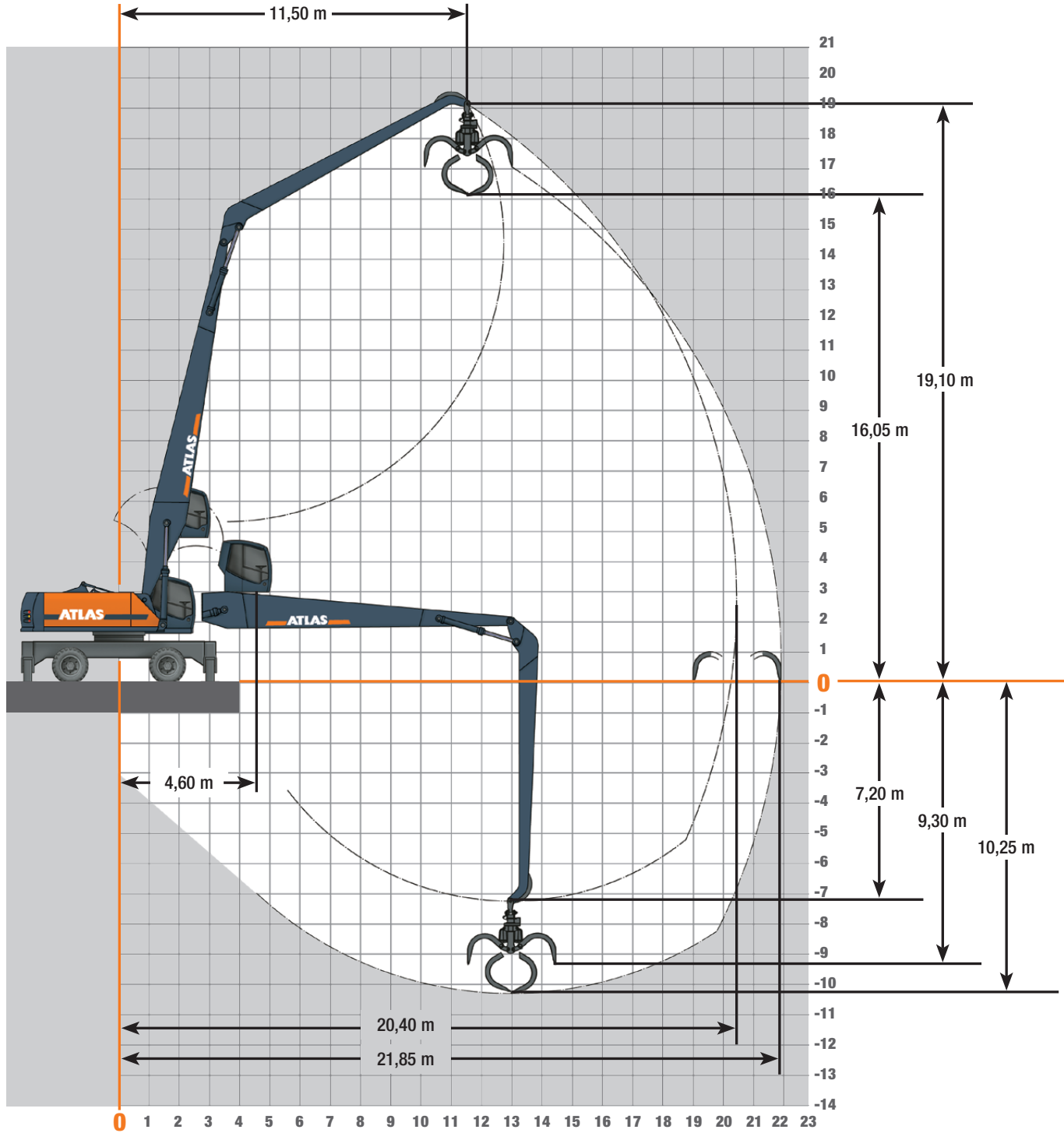


Orange peel grab



Load lifting magnet

Work Areas Loading boom 12,10 m (C94.6i) with Stick 9,24 m (D94.16i)



Lifting Capacities Loading boom 12,10 m (C94.6i) with Stick 9,24 m (D94.16i)

Lifting Capacities Loading boom 12,10 m (C94.6i) with Stick 9,24 m (D 94.16i). Max. reach 21,85 m

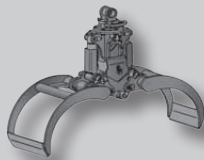
HEIGHT		6,0 m		7,5 m		9,0 m		10,5 m		12,0 m		13,5 m		15,0 m		16,5 m		18,0 m		19,5 m	
		FRONT	LATERAL	FRONT	LATERAL	FRONT	LATERAL	FRONT	LATERAL	FRONT	LATERAL	FRONT	LATERAL	FRONT	LATERAL	FRONT	LATERAL	FRONT	LATERAL	FRONT	LATERAL
18,0 m	outriggers down																				
	outriggers up																				
16,5 m	outriggers down											5,7*	5,7*								
	outriggers up											5,7*	4,6								
15,0 m	outriggers down											5,7*	5,7*	5,3*	5,3*						
	outriggers up											5,7*	4,6	4,8	3,7						
13,5 m	outriggers down											5,7*	5,7*	5,3v	5,3*	5,0*	5,0*				
	outriggers up											5,7*	4,6	4,8	3,7	3,9	2,9				
12,0 m	outriggers down											5,7*	5,7*	5,3*	5,3*	5,0*	5,0*				
	outriggers up											5,7*	4,6	4,7	3,7	3,9	2,9				
10,5 m	outriggers down									6,4*	6,4*	5,9*	5,9*	5,4*	5,4*	5,1*	5,1*	4,7*	4,7*		
	outriggers up									6,4*	5,6	5,7	4,5	4,7	3,6	3,8	2,9	3,1	2,3		
9,0 m	outriggers down									6,7*	6,7*	6,1*	6,1*	5,6*	5,6*	5,1*	5,1*	4,8*	4,8*		
	outriggers up									6,7*	5,3	5,5	4,3	4,5	3,5	3,7	2,8	3,1	2,2		
7,5 m	outriggers down							7,8*	7,8*	7,0*	7,0*	6,3*	6,3*	5,7*	5,7*	5,2*	5,2*	4,8*	4,8*	4,5*	4,5*
	outriggers up							7,8*	6,4	6,5	5,1	5,3	4,1	4,4	3,3	3,6	2,7	3,0	2,2	2,5	1,7
6,0 m	outriggers down			11,7*	11,7*	9,7*	9,7*	8,3*	8,3*	7,3*	7,3*	6,5*	6,5*	5,9*	5,9*	5,3*	5,3*	4,9*	4,9*	4,5*	4,5*
	outriggers up			11,7*	10,0	9,7*	7,6	7,6	5,9	6,2	4,7	5,0	3,8	4,2	3,1	3,5	2,5	2,9	2,1	2,4	1,7
4,5 m	outriggers down	16,9*	16,9*	12,9*	12,9*	10,4*	10,4*	8,8*	8,8*	7,6*	7,6*	6,7*	6,7*	6,0*	6,0*	5,5*	5,5*	5,0*	5,0*	4,6*	4,6*
	outriggers up	16,0	12,0	11,7	8,8	8,9	6,8	7,1	5,4	5,8	4,4	4,8	3,6	4,0	2,9	3,3	2,4	2,8	2,0	2,4	1,6
3,0 m	outriggers down	1,9*	1,9*	13,9*	13,9*	11,1*	11,1*	9,3*	9,3*	7,9*	7,9*	7,0*	7,0*	6,2*	6,2*	5,6*	5,6*	5,0*	5,0*	4,6*	4,6*
	outriggers up	1,9*	1,9*	10,4	7,7	8,2	6,1	6,6	4,9	5,4	4,0	4,5	3,3	3,8	2,7	3,2	2,3	2,7	1,9	2,3	1,5
1,5 m	outriggers down			5,7*	5,7*	11,6*	11,6*	9,6*	9,6*	8,2*	8,2*	7,2*	7,1*	6,3*	6,3*	5,6*	5,6*	5,1*	5,1*	4,6*	4,6*
	outriggers up			5,7*	5,7*	7,5	5,4	6,1	4,4	5,1	3,7	4,2	3,1	3,6	2,5	3,1	2,1	2,6	1,8	2,2	1,5
0 m	outriggers down			4,1*	4,1*	11,6*	11,6*	9,8*	9,8*	8,4*	8,4*	7,2*	7,2*	6,4*	6,4*	5,7*	5,7*	5,1*	5,1*	4,5*	4,5*
	outriggers up			4,1*	4,1*	7,0	4,9	5,7	4,1	4,8	3,4	4,0	2,8	3,4	2,4	2,9	2,0	2,5	1,7	2,2	1,4
-1,5 m	outriggers down			4,0*	4,0*	8,9*	8,9*	9,9*	9,9*	8,4*	8,4*	7,3*	7,3*	6,4*	6,4*	5,6*	5,6*	5,0*	5,0*	4,4*	4,4*
	outriggers up			4,0*	4,0*	6,6	4,6	5,4	3,8	4,5	3,2	3,8	2,7	3,3	2,2	2,8	1,9	2,4	1,6	2,1	1,4
-3,0 m	outriggers down			4,4*	4,4*	8,3*	8,3*	9,8*	9,8*	8,3*	8,3*	7,2*	7,2*	6,3*	6,3*	5,5*	5,5*	4,8*	4,8*		
	outriggers up			4,4*	4,4*	6,4	4,4	5,2	3,6	4,4	3,0	3,7	2,5	3,2	2,2	2,8	1,8	2,4	1,6		
-4,5 m	outriggers down			5,0*	5,0*	8,4*	8,5*	9,4*	9,4*	8,1*	8,1*	6,7*	7,0*	6,1*	6,1*	5,3*	5,3*	4,6*	4,6*		
	outriggers up			5,0*	5,0*	6,3	4,3	5,1	3,5	4,3	2,9	3,4	2,5	3,2	2,1	2,7	1,8	2,4	1,6		
-6,0 m	outriggers down					9,0*	9,0*	8,9*	8,9*	7,7*	7,7*	6,6*	6,6*	5,7*	5,7*	5,0*	5,0*				
	outriggers up					6,3	4,4	5,1	3,5	4,3	2,9	3,6	2,4	3,1	2,1	2,7	1,8				

The specified max. loading capacities in tonnes include a stability of 33% or are calculated at 87% of the hydraulic lifting power, as per ISO10567. These values are applicable at the tip of the arm with optimum positioning of the corresponding arm system. * Value limited due to hydraulics. Weights of attached load carrying accessories (grab, magnet, load hook, etc.) are not included with the load carrying values.

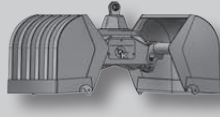
Attachments



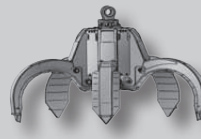
Load hook



Log grab



Clamshell grab

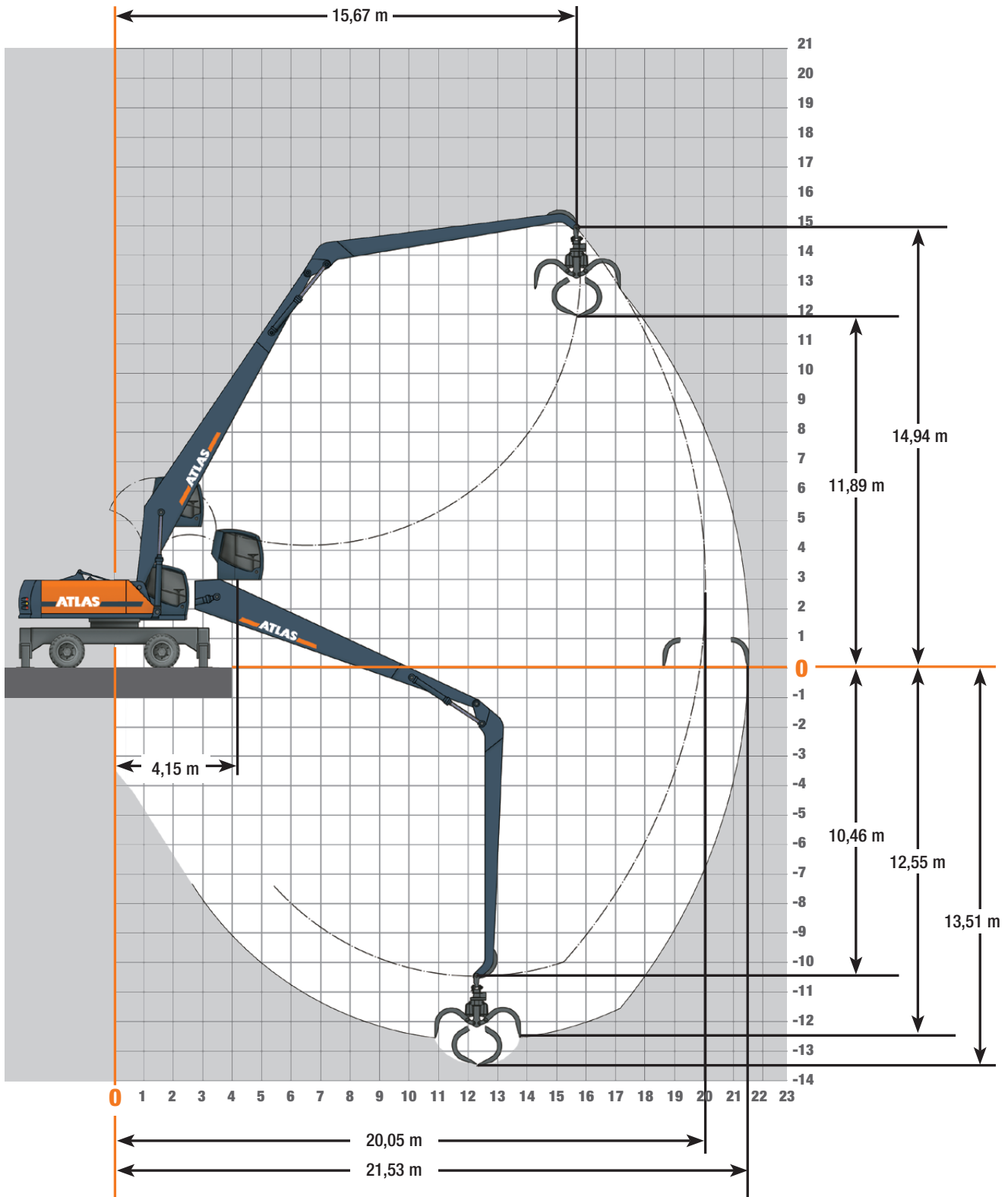


Orange peel grab



Load lifting magnet

Work Areas Loading boom 12,10 m (C94.6iD) with Stick 9,24 m (D94.16i)



Lifting Capacities Loading boom 12,10 m (C94.6iD) with Stick 9,24 m (D94.16i)

Lifting Capacities Loading boom 12,10 m (C94.6iD) with Stick 9,24 m (D 94.16i). Max. reach 21,53 m

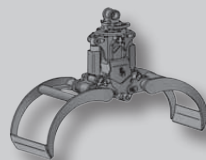
HEIGHT		6,0 m		7,5 m		9,0 m		10,5 m		12,0 m		13,5 m		15,0 m		16,5 m		18,0 m		19,5 m	
		FRONT	LATERAL	FRONT	LATERAL	FRONT	LATERAL	FRONT	LATERAL	FRONT	LATERAL	FRONT	LATERAL	FRONT	LATERAL	FRONT	LATERAL	FRONT	LATERAL	FRONT	LATERAL
18,0 m	outriggers down																				
	outriggers up																				
16,5 m	outriggers down																3,8*	3,8*			
	outriggers up																3,8	3,1			
15,0 m	outriggers down																3,8*	3,8*			
	outriggers up																3,8	3,1			
13,5 m	outriggers down																3,9*	3,9*	3,8*	3,8*	
	outriggers up																3,9	3,0	3,3	2,4	
12,0 m	outriggers down														4,2*	4,2*	4,4*	4,4*	3,9*	3,9*	
	outriggers up														4,2*	3,6	3,9	2,9	3,2	2,4	
10,5 m	outriggers down														4,4*	4,4*	4,2*	4,2*	4,0*	4,0*	
	outriggers up														4,4*	3,5	3,8	2,8	3,1	2,3	
9,0 m	outriggers down									5,6*	5,6*	5,1*	5,1*	4,7*	4,7*	4,4*	4,4*	4,1*	4,1*	3,9*	3,9*
	outriggers up									5,6*	5,0	5,1*	4,0	4,3	3,3	3,6	2,7	3,0	2,2	2,5	1,8
7,5 m	outriggers down					8,1*	8,1*	6,9*	6,9*	6,0*	6,0*	5,4*	5,4*	4,9*	4,9*	4,6*	4,6*	4,3*	4,3*	4,0*	4,0*
	outriggers up					8,1*	7,1	6,9*	5,7	6,0	4,6	5,0	3,8	4,1	3,1	3,5	2,5	3,0	2,1	2,5	1,7
6,0 m	outriggers down	2,4*	2,4*	11,4*	11,4*	9,1*	9,1*	7,6*	7,6*	6,5*	6,5*	5,8*	5,8*	5,2*	5,2*	4,8*	4,8*	4,4*	4,4*	4,1*	4,1*
	outriggers up	2,4*	2,4*	10,8	8,0	8,5	6,4	6,8	5,1	5,6	4,2	4,7	3,5	3,9	2,9	3,3	2,4	2,8	2,0	2,4	1,6
4,5 m	outriggers down			6,1*	6,1*	9,9*	9,9*	8,2*	8,2*	7,0*	7,0*	6,1*	6,1*	5,5*	5,5*	5,0*	5,0*	4,6*	4,6*	4,2*	4,2*
	outriggers up			6,1*	6,1*	7,7	5,7	6,3	4,6	5,2	3,8	4,4	3,2	3,7	2,7	3,2	2,2	2,7	1,9	2,3	1,5
3,0 m	outriggers down			4,4*	4,4*	10,6*	10,6*	8,7*	8,7*	7,4*	7,4*	6,4*	6,4*	5,7*	5,7*	5,2*	5,2*	4,7*	4,7*	4,3*	4,3*
	outriggers up			4,4*	4,4*	7,2	5,1	5,9	4,2	4,9	3,5	4,1	3,0	3,5	2,5	3,0	2,1	2,6	1,7	2,2	1,5
1,5 m	outriggers down			4,2*	4,2*	9,2*	9,2*	9,1*	9,1*	7,7*	7,7*	6,7*	6,7*	6,0*	6,0*	5,3*	5,3*	4,8*	4,8*	4,4*	4,4*
	outriggers up			4,2*	4,2*	6,8	4,7	5,6	3,9	4,6	3,3	3,9	2,8	3,4	2,3	2,9	2,0	2,5	1,7	2,2	1,4
0 m	outriggers down			4,5*	4,5*	8,5*	8,5*	9,4*	9,4*	8,0*	8,0*	7,0*	6,9*	6,1*	6,1*	5,4*	5,4*	4,9*	4,9*	4,5*	4,5*
	outriggers up			4,5*	4,5*	6,5	4,5	5,3	3,7	4,5	3,1	3,8	2,6	3,2	2,2	2,8	1,9	2,4	1,6		
-1,5 m	outriggers down			5,1*	5,1*	8,6*	8,6*	9,6*	9,6*	8,1*	8,1*	7,0*	7,0*	6,2*	6,2*	5,5*	5,5*	5,0*	4,9*	4,5*	4,5*
	outriggers up			5,1*	5,1*	6,4	4,4	5,2	3,6	4,3	3,0	3,7	2,5	3,2	2,1	2,7	1,8	2,4	1,6		
-3,0 m	outriggers down			5,6*	5,9*	9,1*	9,1*	9,6*	9,6*	8,2*	8,2*	7,1*	7,1*	6,2*	6,2*	5,5*	5,5*				
	outriggers up			5,6*	5,6	6,3	4,3	5,1	3,5	4,3	2,9	3,6	2,4	3,1	2,1	2,7	1,8				
-4,5 m	outriggers down			6,7*	6,7*	9,9*	9,9*	9,5*	9,5*	8,1*	8,1*	7,0*	7,0*	6,1*	6,1*	5,3*	5,3*				
	outriggers up			6,7*	5,7	6,4	4,4	5,1	3,5	4,3	2,9	3,6	2,4	3,2	2,1	2,7	1,8				
-6,0 m	outriggers down					10,8*	9,1*	9,1*	7,8*	7,8*	6,7*	6,7*	5,8*	5,8*							
	outriggers up					6,5	4,5	5,2	3,6	4,3	3,0	3,7	2,5	3,2	2,1						

The specified max. loading capacities in tonnes include a stability of 33% or are calculated at 87% of the hydraulic lifting power, as per ISO10567. These values are applicable at the tip of the arm with optimum positioning of the corresponding arm system. * Value limited due to hydraulics. Weights of attached load carrying accessories (grab, magnet, load hook, etc.) are not included with the load carrying values.

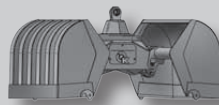
Attachments



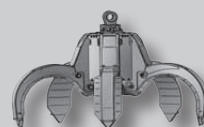
Load hook



Log grab



Clamshell grab

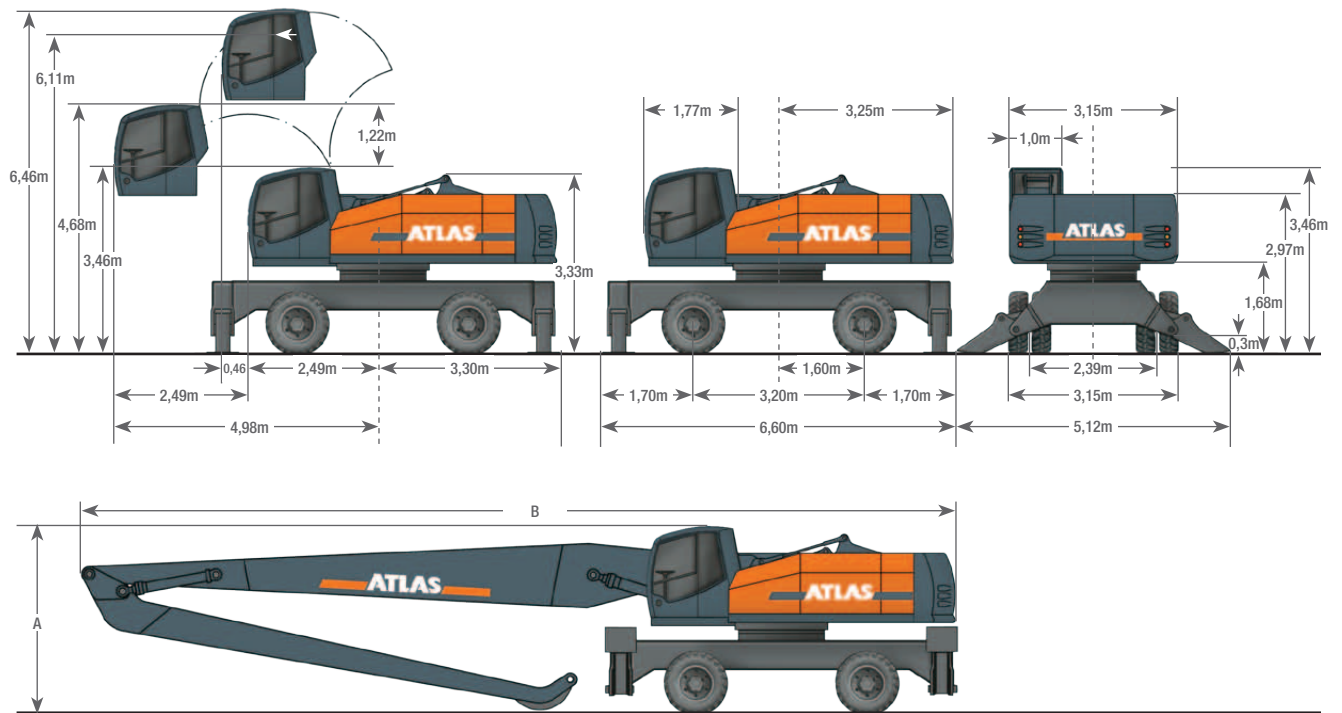


Orange peel grab



Load lifting magnet

Dimensions



A TRANSPORT HEIGHT

Loading boom 9,80 m (C94.5i) with Stick 7,50 m (D94.15i).....	3,46 m
Loading boom 12,10 m (C94.6i) with Stick 9,24 m (D94.16i).....	3,46 m
Loading boom 12,10 m (C94.6id) with Stick 9,24 m (D94.16i).....	3,47 m

B TRANSPORT LENGTH

Loading boom 9,80 m (C94.5i) with Stick 7,50 m (D94.15i).....	14,10 m
Loading boom 12,10 m (C94.6i) with Stick 9,24 m (D94.16i).....	16,40 m
Loading boom 12,10 m (C94.6id) with Stick 9,24 m (D94.16i).....	16,23 m

www.atlasgmbh.com

ATLAS Maschinen GmbH

EXCAVATORS

Atlasstrasse 6

27777 Ganderkesee, Germany

T: +49 (0) 4222 954 0

F: +49 (0) 4222 954 343

info@atlasgmbh.com

520MH-EN (1) Effective date: August 2010. Product specifications and prices are subject to change without notice or obligation. The photographs and/or drawings in this document are for illustrative purposes only. Refer to the appropriate Operator's Manual for instructions on the proper use of this equipment. Failure to follow the appropriate Operator's Manual when using our equipment or to otherwise act irresponsibly may result in serious injury or death. The only warranty applicable to our equipment is the standard written warranty applicable to the particular product and sale and Atlas makes no other warranty, express or implied. The only warranty applicable to our equipment is the standard written warranty applicable to the particular product and sale and Atlas makes no other warranty, express or implied. Products and services listed may be trademarks, service marks or trade-names of Atlas Maschinen GmbH and/or its subsidiaries. All rights are reserved. Atlas® is a registered trademark of Atlas Maschinen GmbH. Copyright © 2010 Atlas Maschinen GmbH.