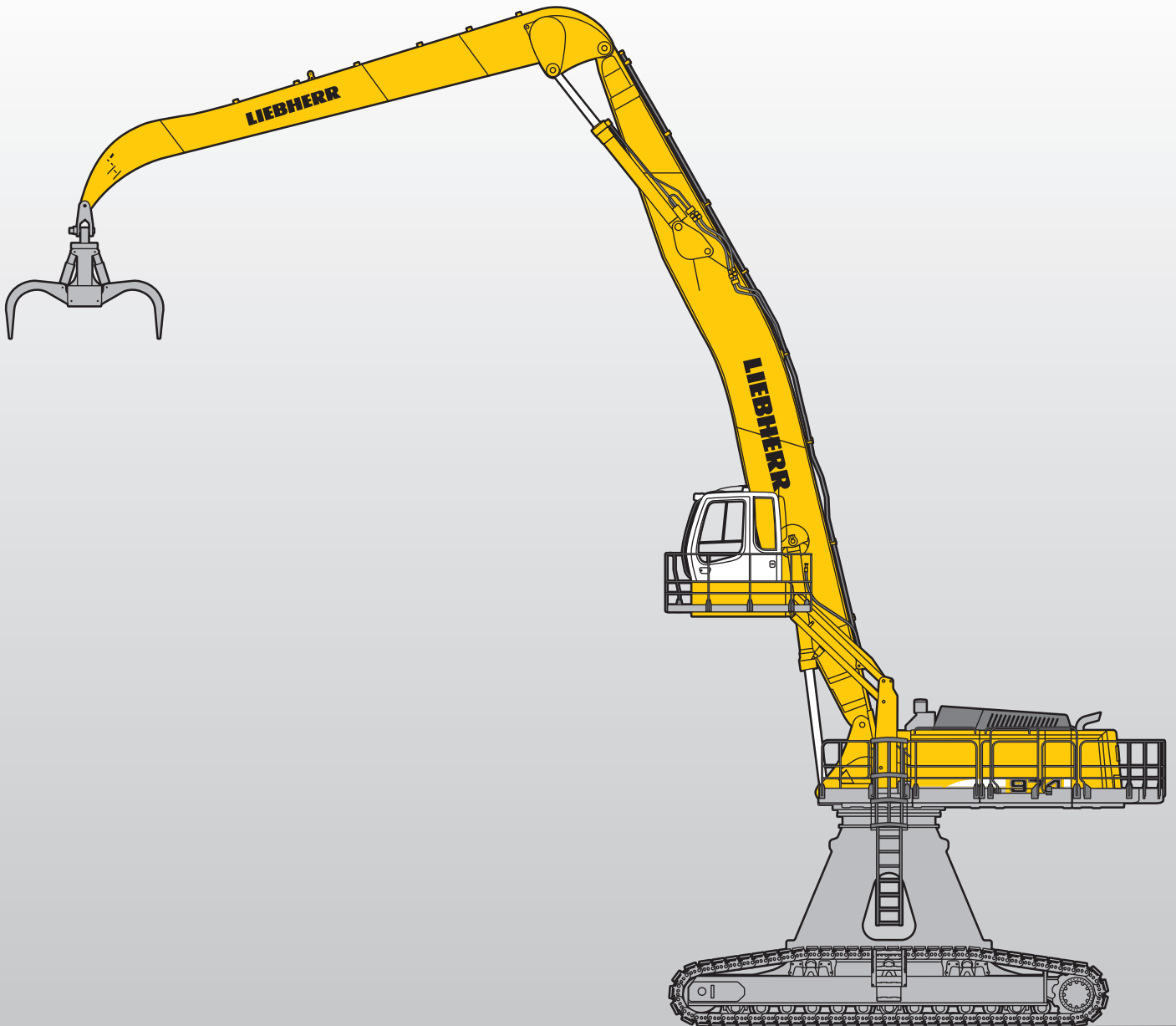


Machine for Industrial Applications **R 974 C**

Litronic® High Rise

Operating Weight: 128,000 – 136,100 kg
Engine Output: 400 kW / 543 HP



LIEBHERR

Technical Data



Engine

Rating per ISO 9249	400 kW (543 HP) at 1,800 RPM
Model	Liebherr D 9508
Type	8 cylinder V-engine
Bore/Stroke	128/157 mm
Displacement	16.16 l
Engine operation	4-stroke diesel Common-rail-injection turbo-charged after-cooled reduced emissions
Cooling	water-cooled
Air cleaner	dry-type air cleaner with pre-cleaner, primary and safety elements, automatic dust discharge
Fuel tank	1,460 l
Electrical system	
Voltage	24 V
Batteries	2 x 170 Ah/12 V
Starter	24 V/7.8 kW
Alternator	three phase current 28 V/80 A



Hydraulic System

Hydraulic pumps for attachment and travel drive	2 Liebherr variable flow swash plate pumps
Max. flow	2 x 496 l/min.
Max. hydr. pressure	350 bar
Pump control	electro-hydraulic with electronic engine speed sensing regulation over entire RPM range, pressure compensation, flow compensation automatic oil flow optimizer, flow summation
Hydraulic pump for swing drive	1 reversible swash plate pump, closed-loop circuit
Max. flow	315 l/min.
Max. hydr. pressure	350 bar
Hydraulic tank	745 l
Hydraulic system	1,350 l
Hydraulic oil filter	2 full flow filters in return line with integrated fine filter area (5 µm), 1 high pressure filter for each main pump
Cooler	radiator, consisting of cooling unit for coolant and after-cooler as well as 2nd cooler for hydraulic oil with hydrostatically regulated fan drive
MODE selection	adjustment of machine performance and the hydraulics via a mode selector to match application
ECO	for especially economical and environmentally friendly operation
POWER	for maximum digging power and heavy duty jobs
LIFT	for lifting
FINE	for precision work and lifting through very sensitive movements
RPM adjustment	stepless adjustment of engine output via the rpm at each selected mode



Hydraulic Controls

Power distribution	via control valves in single block with integrated safety valves
Flow summation	to boom stick and bucket cylinders
Closed-loop circuit	for uppercarriage swing drive
Activation	electro-hydraulic control
Attachment and swing	proportional via joystick levers
Travel	proportional via foot pedals or removable hand levers
Additional functions	via foot pedals or joystick toggle switch



Swing Drive

Drive by	Liebherr swash plate motor with integrated brake valves
Transmission	Liebherr compact planetary reduction gear
Swing ring	Liebherr, sealed single race ball bearing swing ring, internal teeth
Swing speed	0 – 5.9 RPM stepless
Swing torque	295 kNm
Holding brake	wet multi-disc (spring applied, pressure released)
Option	pedal controlled positioning brake



Uppercarriage

Design	torque resistant modular design upper frame
Attachment mounting	parallel length girders
Catwalks	on both sides



Operator's Cab

Cab	profiles and deep drawn technology, resiliently mounted, sound insulated, tinted windows. Front window armored glass, door with sliding window
Operator's seat	shock absorbing suspension, adjustable to operator's weight, 6-way adjustable seat
Joysticks	integrated into adjustable seat consoles
Monitoring	menu driven query of current operating conditions via the LCD display. Automatic monitoring, display, warning (acoustical and optical signal) and saving machine malfunction data, for example, engine overheating, low engine oil pressure or low hydraulic oil level
Heating system	standard automatic air conditioning, combined cooler/heater, additional dust filter in fresh air/recirculated
Noise emission	
ISO 6396	L _{PA} (inside cab) = 72 dB(A)
2000/14/EC	L _{WA} (surround noise) = 109 dB(A)



Undercarriage

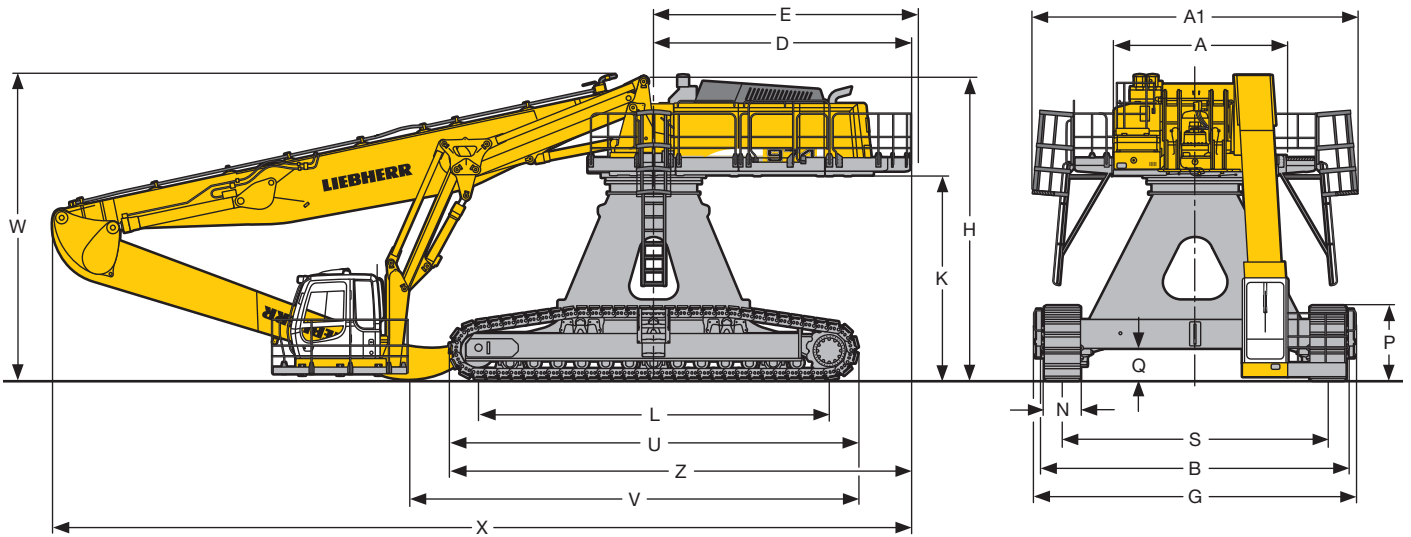
HR	heavy version, long undercarriage, extra wide
Drive	Liebherr swash plate motors with integrated brake valves on both sides
Transmission	Liebherr planetary reduction gears
Travel speed	low range – 2.5 km/h high range – 4.4 km/h
Drawbar pull max.	729 kN
Track components	B 9 S, maintenance-free
Track rollers/Carrier rollers	13/3
Track pads	flat
Digging locks	wet multi-discs (spring applied, pressure released)
Brake valves	integrated into travel motor



Attachment

Type	box-type, combination of resistant steel plates and cast steel components
Hydraulic cylinders	Liebherr cylinders with special seal-system, shock absorbed
Pivots	sealed, low maintenance
Pivots bucket-to-stick	O-ring sealed and completely enclosed
Lubrication	automatic central lubrication system
Hydraulic connections	pipes and hoses equipped with SAE split-flange connections

Dimensions



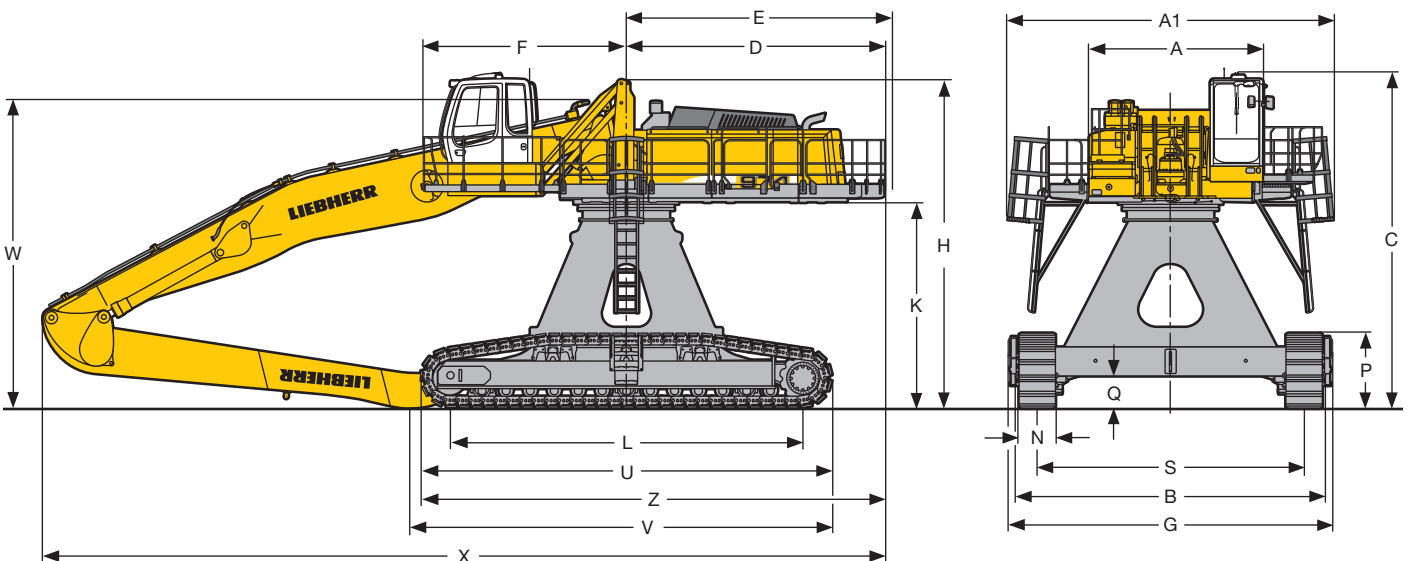
	mm
A	3,605
A1	6,745
C	6,910
D	5,342
E	5,470
F	4,180
H with Double Parallelogram	6,310
H with Parallelogram + Intermediate Piece 0.5 m	6,765
K	4,230
K with Tower Elevation 0.8 m	5,030
L	7,270
P	1,550
Q	650
S	5,500
U	8,480
N	750 1,000
B	6,395 6,500
G	6,680 6,940
Z	9,585

Industrial-Type Straight Boom 12.00 m and Industrial Stick		
	m	9.00
V	mm	9,300
W	mm	6,350
X	mm	17,800

Industrial-Type Straight Boom 14.00 m and Industrial Stick			
	m	10.50	12.00
V	mm	9,700	8,480
W	mm	6,350	6,350
X	mm	17,800	17,800

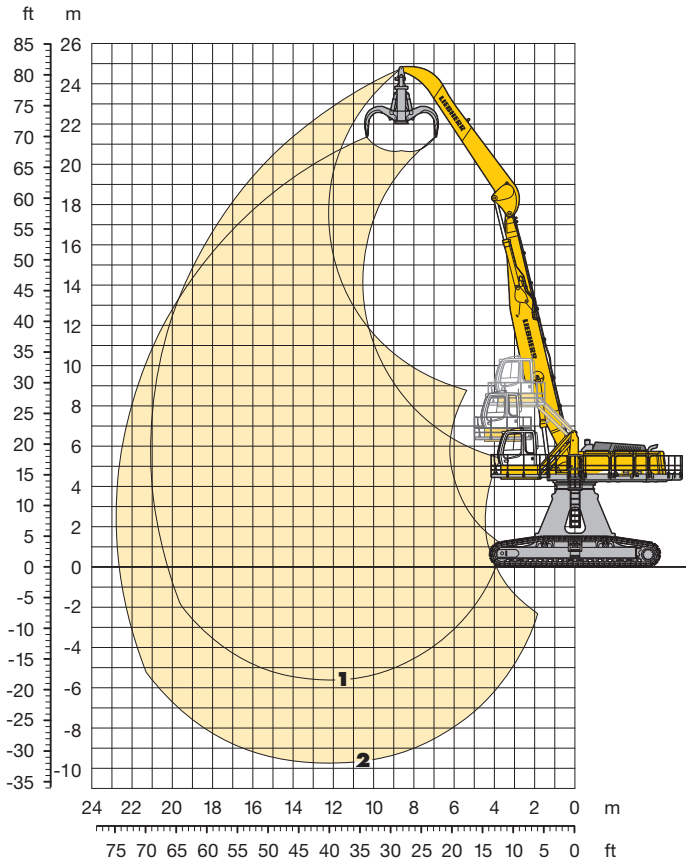
Industrial-Type Gooseneck Boom 12.00 m and Industrial Stick		
	m	9.00
V	mm	8,700
W	mm	6,350
X	mm	17,400

Industrial-Type Gooseneck Boom 14.00 m and Industrial Stick			
	m	10.50	12.00
V	mm	9,100	8,480
W	mm	6,350	6,350
X	mm	19,300	19,300



Industrial Attachment

with Industrial-Type Straight Boom 12.00 m



Attachment Envelope

- 1 with industrial stick 9.00 m
- 2 with industrial stick 9.00 m and grapple model 75 B

Operating Weight and Ground Pressure

Operating weight includes basic machine with hydraulic cab elevation parallelogram + intermediate piece 0.5 m, counterweight 18.0 t, industrial-type straight boom 12.00 m, industrial stick 9.00 m and grapple model 75 B with 5 open tines 3.00 m³.

Undercarriage		HR	
Pad width	mm	750	1,000
Weight	kg	128,000	131,800
Ground pressure	kg/cm ²	1.17	0.91

Lift Capacities

with Industrial-Type Straight Boom 12.00 m

Industrial Stick 9.00 m

m	Under-carriage	4.5 m		6.0 m		7.5 m		9.0 m		10.5 m		12.0 m		13.5 m		15.0 m		16.5 m		18.0 m		19.5 m		21.0 m		22.5 m		24.0 m		25.5 m		m											
		HR	HR	HR	HR	HR	HR	HR	HR	HR	HR	HR	HR	HR	HR	HR	HR	HR	HR	HR	HR	HR	HR	HR	HR	HR	HR	HR	HR	HR	HR	HR	HR										
28.5	HR																																										
27.0	HR																																										
25.5	HR																																										
24.0	HR																																										
22.5	HR												13.8°	13.8°																					13.9°	13.9°	10.17						
21.0	HR											14.9°	14.9°	13.7°	13.7°																					11.9°	11.9°	12.58					
19.5	HR													13.8°	13.8°	13.1°	13.1°																				10.8°	10.8°	14.41				
18.0	HR														13.5°	13.5°	13.0°	13.0°	11.9°	11.9°																	9.5°	9.5°	17.10				
16.5	HR														13.5°	13.5°	12.9°	12.9°	12.4°	12.4°	9.7°	9.7°															9.1°	9.1°	18.11				
15.0	HR											14.4°	14.4°	13.6°	13.6°	13.0°	13.0°	12.4°	12.4°	12.0°	12.0°																	8.9°	8.9°	18.93			
13.5	HR											14.8°	14.8°	13.9°	13.9°	13.1°	13.1°	12.5°	12.5°	12.0°	12.0°	9.3°	9.3°															8.7°	8.7°	19.61			
12.0	HR										16.8°	16.8°	15.4°	15.4°	14.3°	14.3°	13.4°	13.4°	12.7°	12.7°	12.0°	12.0°	11.5°	11.5°														8.6°	8.6°	20.14			
10.5	HR											16.1°	16.1°	14.8°	14.8°	13.8°	13.8°	12.9°	12.9°	12.2°	12.2°	11.6°	11.6°																8.5°	8.5°	20.55		
9.0	HR											19.9°	19.9°	17.8°	17.8°	16.1°	16.1°	15.4°	15.4°	14.2°	14.2°	13.2°	13.2°	12.4°	12.4°	11.6°	11.6°													8.6°	8.6°	20.84	
7.5	HR																																							8.6°	8.6°	21.02	
6.0	HR																																							8.8°	8.8°	21.09	
4.5	HR																																							8.9°	8.9°	21.04	
3.0	HR																																							9.2°	9.2°	20.89	
1.5	HR																																							9.5°	9.5°	20.62	
0	HR																																							10.0°	10.0°	20.24	
- 1.5	HR																																							9.7°	9.7°	19.73	
- 3.0	HR																																								10.1°	10.1°	18.63
- 4.5	HR																																								11.6°	11.6°	16.64
- 6.0	HR																																										
- 7.5	HR																																										
- 9.0	HR																																										
- 10.5	HR																																										

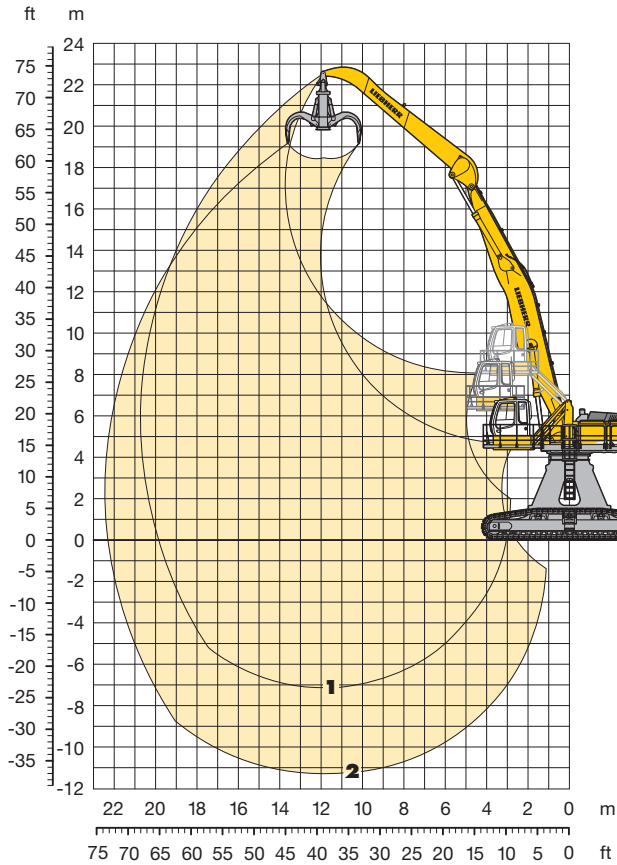
Height Can be slewed through 360° In longitudinal position of undercarriage Max. reach * Limited by hydr. capacity

The lift capacities are stated in metric tonnes (t) on the lifting gear's stick tip, and can be lifted 360° on firm, level supporting surface. Capacities are valid for 750 mm flat pads. Indicated loads are based on ISO 10567 standard and do not exceed 75 % of tipping or 87 % of hydraulic capacity (indicated via *). Lifting capacity of the excavator is limited by machine stability, hydraulic capacity and maximum permissible load of the load hook.

According to European Standard, EN 474-5: In the European Union excavators have to be equipped with an overload warning device, a load diagram and automatic check valves on the hoist cylinders, when they are used for lifting operations which require the use of lifting accessories.

Industrial Attachment

with Industrial-Type Gooseneck Boom 12.00 m



Attachment Envelope

- 1 with industrial stick 9.00 m
- 2 with industrial stick 9.00 m and grapple model 75 B

Operating Weight and Ground Pressure

Operating weight includes basic machine with hydraulic cab elevation parallelogram + intermediate piece 0.5 m, counterweight 18.0 t, industrial-type gooseneck boom 12.00 m, industrial stick 9.00 m and grapple model 75 B with 5 open tines 3.00 m³.

Undercarriage		HR	
Pad width	mm	750	1,000
Weight	kg	128,300	132,100
Ground pressure	kg/cm ²	1.18	0.91

Lift Capacities

with Industrial-Type Gooseneck Boom 12.00 m

Industrial Stick 9.00 m

m	Under-carriage	4.5 m		6.0 m		7.5 m		9.0 m		10.5 m		12.0 m		13.5 m		15.0 m		16.5 m		18.0 m		19.5 m		21.0 m		22.5 m		24.0 m		25.5 m		m							
		HR	HR	HR	HR	HR	HR	HR	HR	HR	HR	HR	HR	HR	HR	HR	HR	HR	HR	HR	HR	HR	HR	HR	HR	HR	HR	HR	HR	HR	HR	HR							
28.5	HR																																						
27.0	HR																																						
25.5	HR																																						
24.0	HR																																						
22.5	HR																																						
21.0	HR												11.4*	11.4*																			11.3*	11.3*	11.94				
19.5	HR												12.0*	12.0*	10.9*	10.9*																		10.3*	10.3*	13.87			
18.0	HR														11.5*	11.5*	9.7*	9.7*																	9.6*	9.6*	15.40		
16.5	HR														11.4*	11.4*	11.2*	11.2*																		9.2*	9.2*	16.65	
15.0	HR														11.9*	11.9*	11.5*	11.5*	11.2*	11.2*	10.7*	10.7*														8.9*	8.9*	17.68	
13.5	HR														12.2*	12.2*	11.7*	11.7*	11.3*	11.3*	11.0*	11.0*														8.7*	8.7*	18.53	
12.0	HR														12.6*	12.6*	12.0*	12.0*	11.5*	11.5*	11.1*	11.1*	9.7*	9.7*												8.6*	8.6*	19.21	
10.5	HR														14.2*	14.2*	13.2*	13.2*	12.4*	12.4*	11.8*	11.8*	11.3*	11.3*	10.9*	10.9*										8.5*	8.5*	19.76	
9.0	HR																																				8.6*	8.6*	20.18
7.5	HR																																				8.6*	8.6*	20.47
6.0	HR																																				8.8*	8.8*	20.65
4.5	HR																																				9.0*	9.0*	20.72
3.0	HR																																				9.3*	9.3*	20.68
1.5	HR																																				9.6*	9.6*	20.52
0	HR																																				10.1*	10.1*	20.25
- 1.5	HR																																				10.6*	10.6*	19.86
- 3.0	HR																																				11.1*	11.1*	19.34
- 4.5	HR																																				11.1*	11.1*	18.69
- 6.0	HR																																				11.1*	11.1*	17.88
- 7.5	HR																																				12.0*	12.0*	16.22
- 9.0	HR																																						
- 10.5	HR																																						

Height Can be slewed through 360° In longitudinal position of undercarriage Max. reach * Limited by hydr. capacity

The lift capacities are stated in metric tonnes (t) on the lifting gear's stick tip, and can be lifted 360° on firm, level supporting surface. Capacities are valid for 750 mm flat pads. Indicated loads are based on ISO 10567 standard and do not exceed 75 % of tipping or 87 % of hydraulic capacity (indicated via *). Lifting capacity of the excavator is limited by machine stability, hydraulic capacity and maximum permissible load of the load hook.

According to European Standard, EN 474-5: In the European Union excavators have to be equipped with an overload warning device, a load diagram and automatic check valves on the hoist cylinders, when they are used for lifting operations which require the use of lifting accessories.

Industrial Attachment

with Industrial-Type Straight Boom 14.00 m

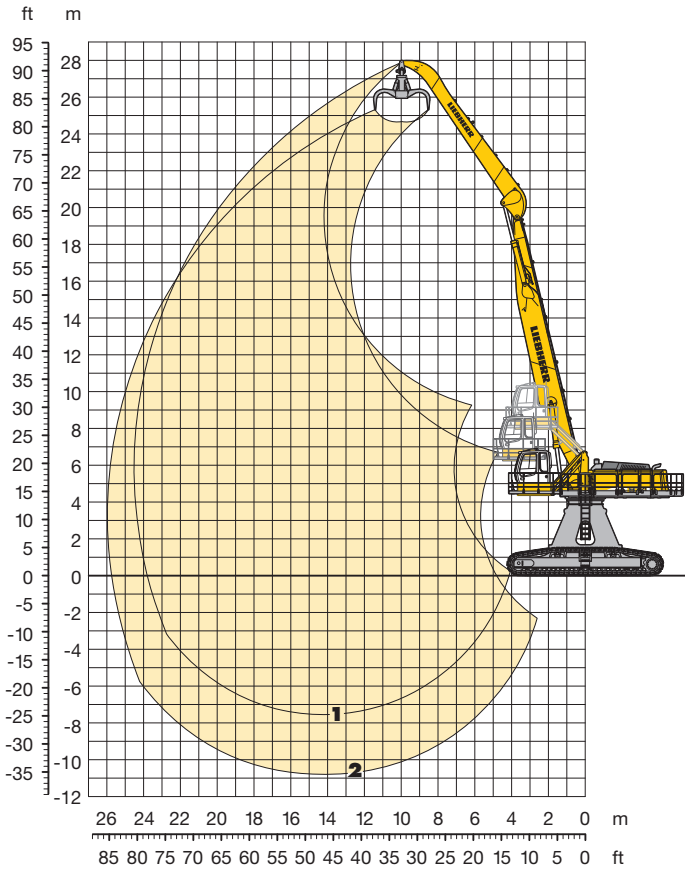
Attachment Envelope

- 1 with industrial stick 10.50 m
- 2 with industrial stick 10.50 m and grapple model 75 B

Operating Weight and Ground Pressure

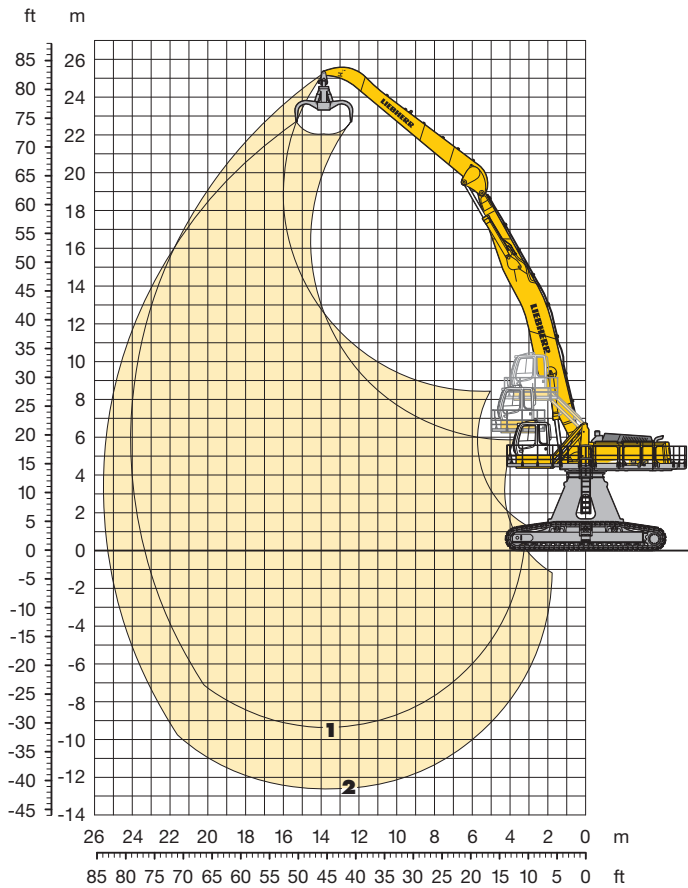
Operating weight includes basic machine with hydraulic cab elevation parallelogram + intermediate piece 0.5 m, counterweight 18.0 t, industrial-type straight boom 14.00 m, industrial stick 10.50 m and grapple model 75 B with 5 open tines 2.50 m³.

Undercarriage		HR	
Pad width	mm	750	1,000
Weight	kg	129,500	133,300
Ground pressure	kg/cm ²	1.19	0.92



Industrial Attachment

with Industrial-Type Gooseneck Boom 14.00 m



Attachment Envelope

- 1 with industrial stick 10.50 m
- 2 with industrial stick 10.50 m and grapple model 75 B

Operating Weight and Ground Pressure

Operating weight includes basic machine with hydraulic cab elevation parallelogram + intermediate piece 0.5 m, counterweight 18.0 t, industrial-type gooseneck boom 14.00 m, industrial stick 10.50 m and grapple model 75 B with 5 open tines 2.50 m³.

Undercarriage		HR	
Pad width	mm	750	1,000
Weight	kg	129,800	133,600
Ground pressure	kg/cm ²	1.19	0.92

Lift Capacities

with Industrial-Type Gooseneck Boom 14.00 m

Industrial Stick 10.50 m

m	Under-carriage	4.5 m		6.0 m		7.5 m		9.0 m		10.5 m		12.0 m		13.5 m		15.0 m		16.5 m		18.0 m		19.5 m		21.0 m		22.5 m		24.0 m		25.5 m		m				
		HR	HR	HR	HR	HR	HR	HR	HR	HR	HR	HR	HR	HR	HR	HR	HR	HR	HR	HR	HR	HR	HR	HR	HR	HR	HR	HR	HR	HR	HR	HR	HR			
28.5	HR																																			
27.0	HR																																			
25.5	HR																																			
24.0	HR																9.8*	9.8*																8.7*	8.7*	15.54
22.5	HR																	9.3*	9.3*															8.1*	8.1*	17.19
21.0	HR																	9.0*	9.0*	8.8*	8.8*													7.7*	7.7*	18.57
19.5	HR																	8.9*	8.9*	8.6*	8.6*			8.1*	8.1*									7.5*	7.5*	19.73
18.0	HR																	8.9*	8.9*	8.5*	8.5*	8.3*	8.3*											7.3*	7.3*	20.71
16.5	HR																	8.9*	8.9*	8.6*	8.6*	8.3*	8.3*	8.1*	8.1*									7.1*	7.1*	21.54
15.0	HR																	9.1*	9.1*	8.7*	8.7*	8.3*	8.3*	8.1*	8.1*									7.0*	7.0*	22.24
13.5	HR												9.8*	9.8*			9.3*	9.3*	9.0*	9.0*	8.8*	8.8*	8.4*	8.4*	8.1*	8.1*	7.9*	7.9*					7.0*	7.0*	22.81	
12.0	HR											10.9*	10.9*	10.2*	10.2*		9.5*	9.5*	9.2*	9.2*	8.8*	8.8*	8.4*	8.4*	8.1*	8.1*	7.9*	7.9*					7.0*	7.0*	23.27	
10.5	HR										12.6*	12.6*	11.5*	11.5*	10.6*	10.6*	9.8*	9.8*	9.2*	9.2*	8.7*	8.7*	8.3*	8.3*	8.0*	8.0*							7.0*	7.0*	23.62	
9.0	HR							17.5*	17.5*	15.1*	15.1*	13.4*	13.4*	12.1*	12.1*	11.0*	11.0*	10.2*	10.2*	9.5*	9.5*	8.9*	8.9*	8.5*	8.5*	8.1*	8.1*							7.1*	7.1*	23.88
7.5	HR			25.9*	25.9*	23.4*	23.4*	19.1*	19.1*	16.3*	16.3*	14.2*	14.2*	12.7*	12.7*	11.5*	11.5*	10.5*	10.5*	9.8*	9.8*	9.1*	9.1*	8.6*	8.6*	8.2*	8.2*	7.4*	7.4*					7.2*	7.2*	24.03
6.0	HR			7.3*	7.3*	24.3*	24.3*	20.7*	20.7*	17.4*	17.4*	15.0*	15.0*	13.3*	13.3*	12.0*	12.0*	10.9*	10.9*	10.1*	10.1*	9.4*	9.4*	8.8*	8.8*	8.3*	8.3*	7.8*	7.8*					7.4*	7.4*	24.09
4.5	HR			4.9*	4.9*	13.0*	13.0*	22.1*	22.1*	18.4*	18.4*	15.8*	15.8*	13.9*	13.9*	12.4*	12.4*	11.3*	11.3*	10.3*	10.3*	9.6*	9.6*	8.9*	8.9*	8.4*	8.4*	7.8*	7.8*					7.6*	7.6*	24.05
3.0	HR			4.9*	4.9*	10.5*	10.5*	21.0*	21.0*	19.3*	19.3*	16.5*	16.5*	14.4*	14.4*	12.8*	12.8*	11.6*	11.6*	10.6*	10.6*	9.8*	9.8*	9.1*	9.1*	8.4*	8.4*							7.8*	7.8*	23.92
1.5	HR	3.1*	3.1*	5.8*	5.8*	10.1*	10.1*	17.5*	17.5*	19.9*	19.9*	17.0*	17.0*	14.8*	14.8*	13.2*	13.2*	11.9*	11.9*	10.8*	10.8*	9.9*	9.9*	9.1*	9.1*	8.5*	8.5*							7.9*	7.9*	23.69
0	HR	4.7*	4.7*	6.9*	6.9*	10.5*	10.5*	16.4*	16.4*	20.3*	20.3*	17.4*	17.4*	15.2*	15.2*	13.4*	13.4*	12.1*	12.1*	10.9*	10.9*	10.0*	10.0*	9.2*	9.2*	8.4*	8.4*							7.9*	7.9*	23.36
- 1.5	HR	6.2*	6.2*	8.2*	8.2*	11.4*	11.4*	16.5*	16.5*	20.4*	20.4*	17.5*	17.5*	15.3*	15.3*	13.6*	13.6*	12.2*	12.2*	11.0*	11.0*	10.0*	10.0*	9.1*	9.1*	8.2*	8.2*							8.0*	8.0*	22.92
- 3.0	HR	7.7*	7.7*	9.5*	9.5*	12.4*	12.4*	17.1*	17.1*	20.3*	20.3*	17.5*	17.5*	15.3*	15.3*	13.6*	13.6*	12.1*	12.1*	10.9*	10.9*	9.9*	9.9*	8.9*	8.9*									8.0*	8.0*	22.37
- 4.5	HR			10.8*	10.8*	13.6*	13.6*	18.0*	18.0*	19.9*	19.9*	17.3*	17.3*	15.1*	15.1*	13.4*	13.4*	12.0*	12.0*	10.7*	10.7*	9.6*	9.6*	8.5*	8.5*									7.9*	7.9*	21.70
- 6.0	HR					14.8*	14.8*	19.2*	19.2*	19.2*	19.2*	16.7*	16.7*	14.7*	14.7*	13.0*	13.0*	11.6*	11.6*	10.3*	10.3*	9.1*	9.1*											7.9*	7.9*	20.90
- 7.5	HR							20.7*	20.7*	18.2*	18.2*	15.9*	15.9*	14.0*	14.0*	12.4*	12.4*	10.9*	10.9*	9.6*	9.6*	8.2*	8.2*											8.0*	8.0*	19.68
- 9.0	HR											14.6*	14.6*	12.9*	12.9*	11.4*	11.4*																	10.0*	10.0*	16.44
- 10.5	HR																																			

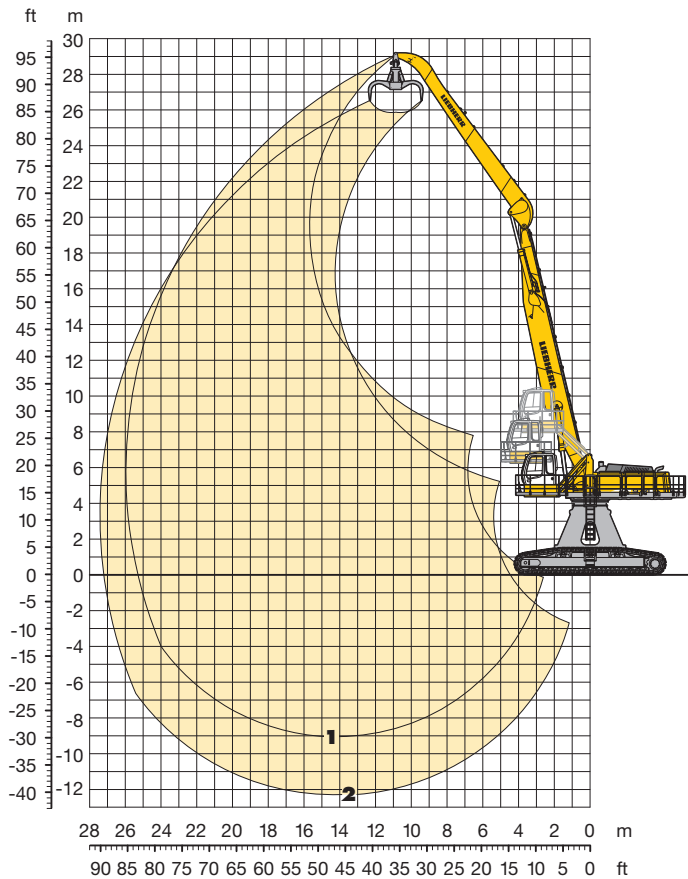
Height Can be slewed through 360° In longitudinal position of undercarriage Max. reach * Limited by hydr. capacity

The lift capacities are stated in metric tonnes (t) on the lifting gear's stick tip, and can be lifted 360° on firm, level supporting surface. Capacities are valid for 750 mm flat pads. Indicated loads are based on ISO 10567 standard and do not exceed 75 % of tipping or 87 % of hydraulic capacity (indicated via *). Lifting capacity of the excavator is limited by machine stability, hydraulic capacity and maximum permissible load of the load hook.

According to European Standard, EN 474-5: In the European Union excavators have to be equipped with an overload warning device, a load diagram and automatic check valves on the hoist cylinders, when they are used for lifting operations which require the use of lifting accessories.

Industrial Attachment

with Industrial-Type Straight Boom 14.00 m



Attachment Envelope

- 1 with industrial stick 12.00 m
- 2 with industrial stick 12.00 m and grapple model 75 B

Operating Weight and Ground Pressure

Operating weight includes basic machine with hydraulic cab elevation parallelogram + intermediate piece 0.5 m, counterweight 18.0 t, industrial-type straight boom 14.00 m, industrial stick 12.00 m and grapple model 75 B with 5 open tines 2.00 m³.

Undercarriage		HR	
Pad width	mm	750	1,000
Weight	kg	129,900	133,700
Ground pressure	kg/cm ²	1.19	0.92

Lift Capacities

with Industrial-Type Straight Boom 14.00 m

Industrial Stick 12.00 m

m	Under-carriage	4.5 m		6.0 m		7.5 m		9.0 m		10.5 m		12.0 m		13.5 m		15.0 m		16.5 m		18.0 m		19.5 m		21.0 m		22.5 m		24.0 m		25.5 m		m						
		HR	HR	HR	HR	HR	HR	HR	HR	HR	HR	HR	HR	HR	HR	HR	HR	HR	HR	HR	HR	HR	HR	HR	HR	HR	HR	HR	HR	HR	HR	HR	HR					
28.5	HR											10.5*	10.5*																		10.2*	10.2*	12.11					
27.0	HR													10.9*	10.9*																	8.8*	8.8*	14.67				
25.5	HR															10.8*	10.8*	8.4*	8.4*													7.9*	7.9*	16.69				
24.0	HR															10.4*	10.4*	9.9*	9.9*	8.2*	8.2*											7.3*	7.3*	18.35				
22.5	HR																	9.7*	9.7*	9.3*	9.3*	7.6*	7.6*									6.9*	6.9*	19.76				
21.0	HR																	9.5*	9.5*	9.1*	9.1*	8.8*	8.8*									6.5*	6.5*	20.97				
19.5	HR																	9.5*	9.5*	9.0*	9.0*	8.6*	8.6*	8.3*	8.3*							6.3*	6.3*	22.00				
18.0	HR																	9.5*	9.5*	9.0*	9.0*	8.6*	8.6*	8.3*	8.3*	7.2*	7.2*					6.1*	6.1*	22.88				
16.5	HR																	9.5*	9.5*	9.0*	9.0*	8.6*	8.6*	8.2*	8.2*	7.9*	7.9*					6.0*	6.0*	23.63				
15.0	HR																10.3*	10.3*	9.7*	9.7*	9.1*	9.1*	8.7*	8.7*	8.2*	8.2*	7.9*	7.9*	6.8*	6.8*			5.9*	5.9*	24.27			
13.5	HR																10.5*	10.5*	9.8*	9.8*	9.3*	9.3*	8.8*	8.8*	8.3*	8.3*	7.9*	7.9*	7.6*	7.6*			5.8*	5.8*	24.79			
12.0	HR																	10.8*	10.8*	10.1*	10.1*	9.4*	9.4*	8.9*	8.9*	8.4*	8.4*	8.0*	8.0*	7.6*	7.6*			5.8*	5.8*	25.22		
10.5	HR																																		5.9*	5.9*	25.54	
9.0	HR																																			5.8*	5.8*	25.78
7.5	HR																																			5.8*	5.8*	25.92
6.0	HR																																			5.9*	5.9*	25.97
4.5	HR																																			6.0*	6.0*	25.94
3.0	HR																																			6.1*	6.1*	25.82
1.5	HR																																			6.3*	6.3*	25.60
0	HR	2.9*	2.9*	5.1*	5.1*	9.0*	9.0*	15.8*	15.8*	20.3*	20.3*	17.4*	17.4*	15.2*	15.2*	13.5*	13.5*	12.0*	12.0*	10.9*	10.9*	9.9*	9.9*	9.0*	9.0*	8.2*	8.2*	7.4*	7.4*			6.4*	6.4*	25.30				
- 1.5	HR	4.2*	4.2*	6.3*	6.3*	9.6*	9.6*	15.2*	15.2*	20.3*	20.3*	17.5*	17.5*	15.2*	15.2*	13.5*	13.5*	12.0*	12.0*	10.8*	10.8*	9.8*	9.8*	8.9*	8.9*	8.0*	8.0*	7.0*	7.0*			6.3*	6.3*	24.89				
- 3.0	HR	5.6*	5.6*	7.5*	7.5*	10.5*	10.5*	15.4*	15.4*	20.0*	20.0*	17.3*	17.3*	15.1*	15.1*	13.3*	13.3*	11.9*	11.9*	10.7*	10.7*	9.6*	9.6*	8.6*	8.6*	7.7*	7.7*	6.5*	6.5*			6.1*	6.1*	24.39				
- 4.5	HR			8.8*	8.8*	11.6*	11.6*	16.2*	16.2*	19.4*	19.4*	16.8*	16.8*	14.7*	14.7*	13.0*	13.0*	11.6*	11.6*	10.4*	10.4*	9.3*	9.3*	8.2*	8.2*	7.1*	7.1*					6.0*	6.0*	23.63				
- 6.0	HR					12.9*	12.9*	17.3*	17.3*	18.5*	18.5*	16.1*	16.1*	14.1*	14.1*	12.5*	12.5*	11.1*	11.1*	9.9*	9.9*	8.7*	8.7*	7.6*	7.6*							6.5*	6.5*	22.21				
- 7.5	HR							18.7*	18.7*	17.2*	17.2*	15.0*	15.0*	13.3*	13.3*	11.7*	11.7*	10.4*	10.4*	9.1*	9.1*	7.9*	7.9*									7.4*	7.4*	20.12				
- 9.0	HR																																		10.3*	10.3*	15.31	
- 10.5	HR																																					

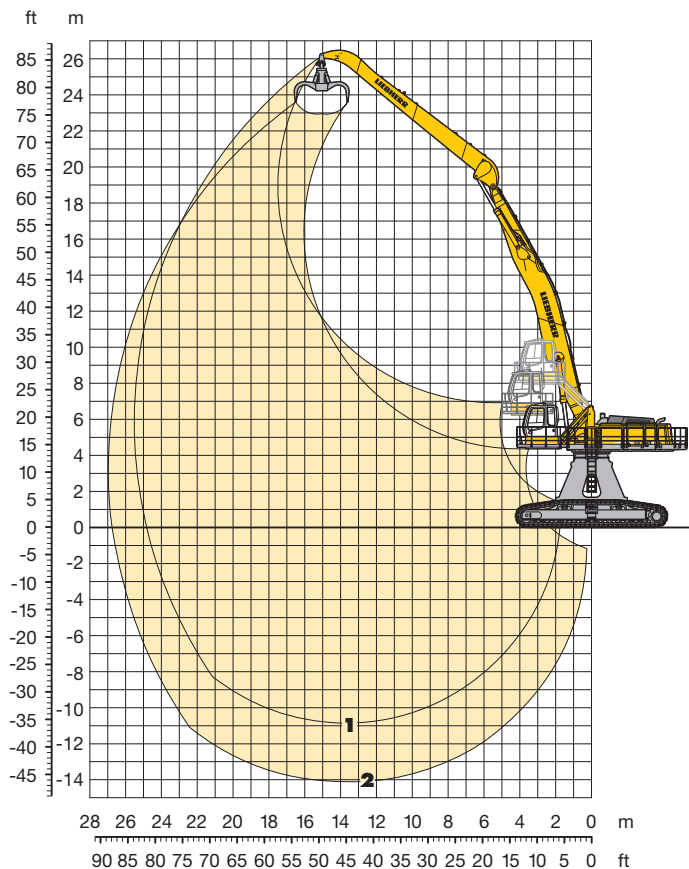
Height Can be slewed through 360° In longitudinal position of undercarriage Max. reach * Limited by hydr. capacity

The lift capacities are stated in metric tonnes (t) on the lifting gear's stick tip, and can be lifted 360° on firm, level supporting surface. Capacities are valid for 750 mm flat pads. Indicated loads are based on ISO 10567 standard and do not exceed 75 % of tipping or 87 % of hydraulic capacity (indicated via *). Lifting capacity of the excavator is limited by machine stability, hydraulic capacity and maximum permissible load of the load hook.

According to European Standard, EN 474-5: In the European Union excavators have to be equipped with an overload warning device, a load diagram and automatic check valves on the hoist cylinders, when they are used for lifting operations which require the use of lifting accessories.

Industrial Attachment

with Industrial-Type Gooseneck Boom 14.00 m



Attachment Envelope

- 1 with industrial stick 12.00 m
- 2 with industrial stick 12.00 m and grapple model 75 B

Operating Weight and Ground Pressure

Operating weight includes basic machine with hydraulic cab elevation parallelogram + intermediate piece 0.5 m, counterweight 18.0 t, industrial-type gooseneck boom 14.00 m, industrial stick 12.00 m and grapple model 75 B with 5 open tines 2.00 m³.

Undercarriage		HR	
Pad width	mm	750	1,000
Weight	kg	130,200	134,000
Ground pressure	kg/cm ²	1.19	0.92

Industrial Attachment

with Industrial-Type Gooseneck Boom 12.00 m with Tower Elevation 0.80 m

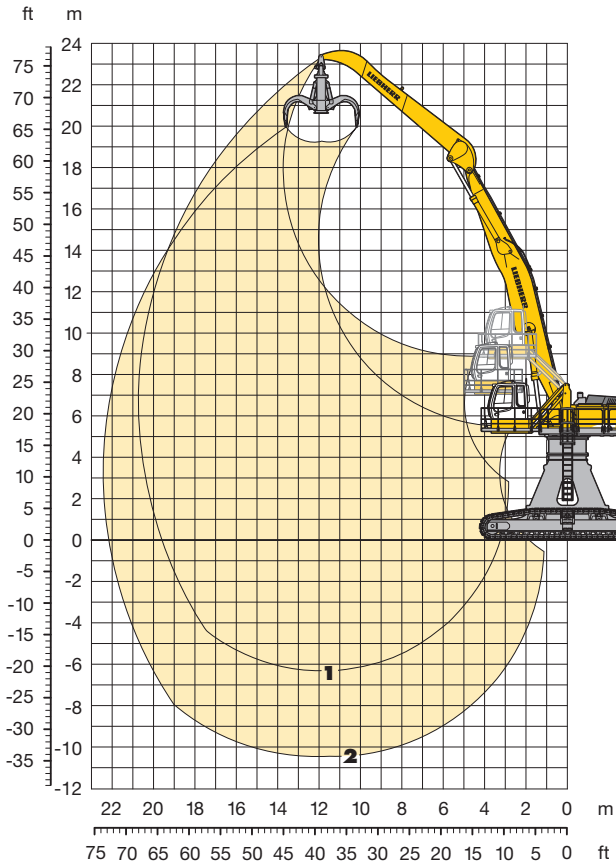
Attachment Envelope

- 1 with industrial stick 9.00 m
- 2 with industrial stick 9.00 m and grapple model 75 B

Operating Weight and Ground Pressure

Operating weight includes basic machine with tower elevation 0.80 m, hydraulic cab elevation parallelogram + intermediate piece 0.5 m, counterweight 18.0 t, industrial-type gooseneck boom 12.00 m, industrial stick 9.00 m and grapple model 75 B with 5 open tines 3.00 m³.

Undercarriage		HR	
Pad width	mm	750	1,000
Weight	kg	130,400	134,200
Ground pressure	kg/cm ²	1.20	0.92



Lift Capacities

with Industrial-Type Gooseneck Boom 12.00 m with Tower Elevation 0.80 m

Industrial Stick 9.00 m

m	Under-carriage	4.5 m		6.0 m		7.5 m		9.0 m		10.5 m		12.0 m		13.5 m		15.0 m		16.5 m		18.0 m		19.5 m		21.0 m		22.5 m		24.0 m		25.5 m		m								
		HR	HR	HR	HR	HR	HR	HR	HR	HR	HR	HR	HR	HR	HR	HR	HR	HR	HR	HR	HR	HR	HR	HR	HR	HR	HR	HR	HR	HR	HR	HR								
28.5	HR																																							
27.0	HR																																							
25.5	HR																																							
24.0	HR													11.4*	11.4*																	10.5*	10.5*	14.28						
22.5	HR															10.5*	10.5*																9.8*	9.8*	15.98					
21.0	HR															10.2*	10.2*	9.9*	9.9*														9.3*	9.3*	17.38					
19.5	HR															10.2*	10.2*	9.8*	9.8*	9.5*	9.5*												9.0*	9.0*	18.55					
18.0	HR															10.2*	10.2*	9.7*	9.7*	9.4*	9.4*	8.9*	8.9*											8.8*	8.8*	19.54				
16.5	HR															10.3*	10.3*	9.8*	9.8*	9.4*	9.4*	9.1*	9.1*											8.6*	8.6*	20.35				
15.0	HR													11.3*	11.3*	10.6*	10.6*	10.0*	10.0*	9.5*	9.5*	9.1*	9.1*	8.7*	8.7*									8.6*	8.6*	21.03				
13.5	HR												11.7*	11.7*	10.9*	10.9*	10.2*	10.2*	9.6*	9.6*	9.2*	9.2*	8.9*	8.9*										8.5*	8.5*	21.58				
12.0	HR								15.0*	15.0*	13.4*	13.4*				11.3*	11.3*	10.5*	10.5*	9.8*	9.8*	9.3*	9.3*	8.9*	8.9*										8.6*	8.6*	22.01			
10.5	HR		28.9*	28.9*	22.6*	22.6*	18.7*	18.7*	16.1*	16.1*	14.2*	14.2*	12.8*	12.8*	11.7*	11.7*	10.8*	10.8*	10.1*	10.1*	9.5*	9.5*	9.0*	9.0*											8.7*	8.7*	22.33			
9.0	HR				25.2*	25.2*	20.4*	20.4*	17.3*	17.3*	15.0*	15.0*	13.4*	13.4*	12.1*	12.1*	11.1*	11.1*	10.3*	10.3*	9.7*	9.7*	9.1*	9.1*	8.7*	8.7*										8.7*	8.7*	22.55		
7.5	HR				13.4*	13.4*	22.0*	22.0*	18.4*	18.4*	15.8*	15.8*	14.0*	14.0*	12.6*	12.6*	11.5*	11.5*	10.6*	10.6*	9.9*	9.9*	9.3*	9.3*	8.7*	8.7*											8.7*	8.7*	22.65	
6.0	HR				8.6*	8.6*	22.4*	22.4*	19.4*	19.4*	16.6*	16.6*	14.6*	14.6*	13.0*	13.0*	11.8*	11.8*	10.8*	10.8*	10.0*	10.0*	9.4*	9.4*	8.8*	8.8*												8.7*	8.7*	22.66
4.5	HR				7.7*	7.7*	16.8*	16.8*	20.1*	20.1*	17.2*	17.2*	15.1*	15.1*	13.4*	13.4*	12.1*	12.1*	11.1*	11.1*	10.2*	10.2*	9.5*	9.5*	8.8*	8.8*											8.7*	8.7*	22.57	
3.0	HR		3.9*	3.9*	8.3*	8.3*	15.2*	15.2*	20.7*	20.7*	17.7*	17.7*	15.4*	15.4*	13.7*	13.7*	12.3*	12.3*	11.2*	11.2*	10.3*	10.3*	9.5*	9.5*														8.8*	8.8*	22.37
1.5	HR		5.8*	5.8*	9.4*	9.4*	15.1*	15.1*	20.9*	20.9*	18.0*	18.0*	15.7*	15.7*	13.9*	13.9*	12.5*	12.5*	11.3*	11.3*	10.3*	10.3*	9.4*	9.4*														8.8*	8.8*	22.07
0	HR		7.7*	7.7*	10.9*	10.9*	15.9*	15.9*	20.9*	20.9*	18.0*	18.0*	15.8*	15.8*	14.0*	14.0*	12.5*	12.5*	11.3*	11.3*	10.3*	10.3*	9.3*	9.3*														8.8*	8.8*	21.65
- 1.5	HR		9.5*	9.5*	12.4*	12.4*	17.0*	17.0*	20.6*	20.6*	17.9*	17.9*	15.7*	15.7*	13.9*	13.9*	12.4*	12.4*	11.2*	11.2*	10.1*	10.1*	8.9*	8.9*														8.8*	8.8*	21.12
- 3.0	HR				14.0*	14.0*	18.5*	18.5*	20.1*	20.1*	17.5*	17.5*	15.4*	15.4*	13.6*	13.6*	12.2*	12.2*	10.9*	10.9*	9.6*	9.6*																8.7*	8.7*	20.47
- 4.5	HR				15.7*	15.7*	20.2*	20.2*	19.1*	19.1*	16.8*	16.8*	14.8*	14.8*	13.1*	13.1*	11.6*	11.6*	10.3*	10.3*	8.8*	8.8*																8.6*	8.6*	19.67
- 6.0	HR						17.8*	17.8*	15.7*	15.7*	13.9*	13.9*	12.3*	12.3*	10.8*	10.8*																						9.3*	9.3*	17.95
- 7.5	HR																																							
- 9.0	HR																																							
- 10.5	HR																																							

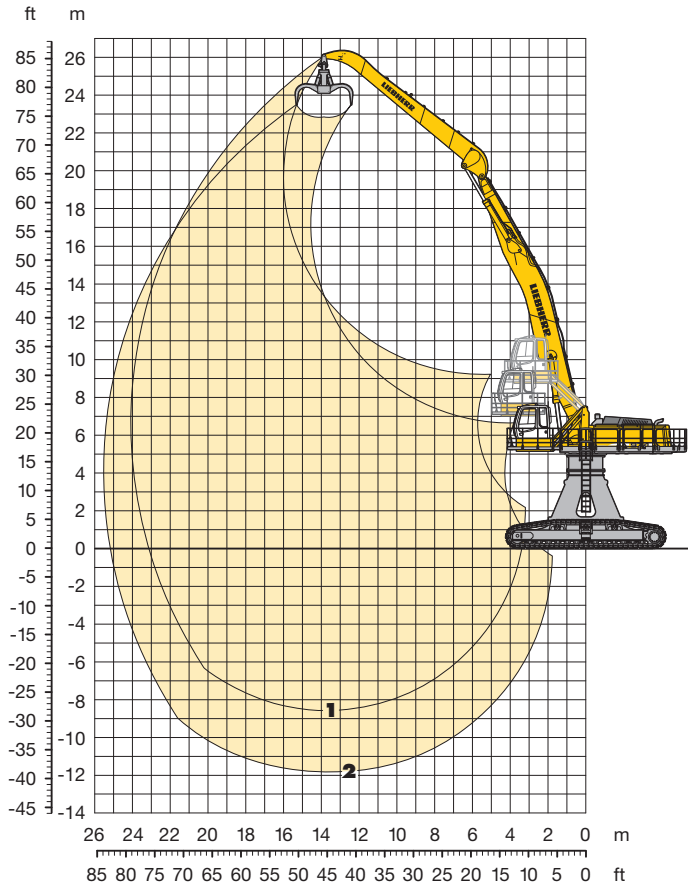
Height Can be slewed through 360° In longitudinal position of undercarriage Max. reach * Limited by hydr. capacity

The lift capacities are stated in metric tonnes (t) on the lifting gear's stick tip, and can be lifted 360° on firm, level supporting surface. Capacities are valid for 750 mm flat pads. Indicated loads are based on ISO 10567 standard and do not exceed 75 % of tipping or 87 % of hydraulic capacity (indicated via *). Lifting capacity of the excavator is limited by machine stability, hydraulic capacity and maximum permissible load of the load hook.

According to European Standard, EN 474-5: In the European Union excavators have to be equipped with an overload warning device, a load diagram and automatic check valves on the hoist cylinders, when they are used for lifting operations which require the use of lifting accessories.

Industrial Attachment

with Industrial-Type Gooseneck Boom 14.00 m with Tower Elevation 0.80 m



Attachment Envelope

- 1 with industrial stick 10.50 m
- 2 with industrial stick 10.50 m and grapple model 75 B

Operating Weight and Ground Pressure

Operating weight includes basic machine with tower elevation 0.80 m, hydraulic cab elevation parallelogram + intermediate piece 0.5 m, counterweight 18.0 t, industrial-type gooseneck boom 14.00 m, industrial stick 10.50 m and grapple model 75 B with 5 open tines 2.50 m³.

Undercarriage		HR	
Pad width	mm	750	1,000
Weight	kg	131,900	135,700
Ground pressure	kg/cm ²	1.21	0.93

Lift Capacities

with Industrial-Type Gooseneck Boom 14.00 m with Tower Elevation 0.80 m

Industrial Stick 10.50 m

m	Under-carriage	4.5 m		6.0 m		7.5 m		9.0 m		10.5 m		12.0 m		13.5 m		15.0 m		16.5 m		18.0 m		19.5 m		21.0 m		22.5 m		24.0 m		25.5 m		m								
		HR	HR	HR	HR	HR	HR	HR	HR	HR	HR	HR	HR	HR	HR	HR	HR	HR	HR	HR	HR	HR	HR	HR	HR	HR	HR	HR	HR	HR	HR	HR	HR	HR						
28.5	HR																																							
27.0	HR																																							
25.5	HR																																					9.0*	9.0*	14.65
24.0	HR																																					8.4*	8.4*	16.46
22.5	HR																																					7.9*	7.9*	17.95
21.0	HR																																					7.6*	7.6*	19.21
19.5	HR																																					7.4*	7.4*	20.27
18.0	HR																																					7.2*	7.2*	21.17
16.5	HR																																					7.1*	7.1*	21.93
15.0	HR																																					7.0*	7.0*	22.56
13.5	HR																																					7.0*	7.0*	23.07
12.0	HR																																					7.0*	7.0*	23.47
10.5	HR																																					7.1*	7.1*	23.77
9.0	HR																																					7.2*	7.2*	23.97
7.5	HR																																					7.3*	7.3*	24.07
6.0	HR																																					7.5*	7.5*	24.08
4.5	HR																																					7.7*	7.7*	23.99
3.0	HR	2.4*	2.4*	5.3*	5.3*	10.1*	10.1*	18.7*	18.7*	19.6*	19.6*	16.8*	16.8*	14.7*	14.7*	13.0*	13.0*	11.7*	11.7*	10.7*	10.7*	9.9*	9.9*	9.3*	9.3*	8.7*	8.7*	8.2*	8.2*	7.6*	7.6*					7.9*	7.9*	23.81		
1.5	HR	4.0*	4.0*	6.4*	6.4*	10.2*	10.2*	16.8*	16.8*	20.1*	20.1*	17.2*	17.2*	15.0*	15.0*	13.3*	13.3*	12.0*	12.0*	10.9*	10.9*	10.0*	10.0*	9.2*	9.2*	8.4*	8.4*									7.9*	7.9*	23.52		
0	HR	5.5*	5.5*	7.6*	7.6*	10.9*	10.9*	16.4*	16.4*	20.4*	20.4*	17.5*	17.5*	15.3*	15.3*	13.5*	13.5*	12.1*	12.1*	11.0*	11.0*	10.0*	10.0*	9.2*	9.2*	8.3*	8.3*									7.9*	7.9*	23.14		
- 1.5	HR	7.0*	7.0*	8.9*	8.9*	11.9*	11.9*	16.7*	16.7*	20.4*	20.4*	17.6*	17.6*	15.3*	15.3*	13.6*	13.6*	12.2*	12.2*	11.0*	11.0*	10.0*	10.0*	9.0*	9.0*	8.1*	8.1*									8.0*	8.0*	22.64		
- 3.0	HR	8.4*	8.4*	10.2*	10.2*	13.0*	13.0*	17.5*	17.5*	20.2*	20.2*	17.4*	17.4*	15.2*	15.2*	13.5*	13.5*	12.1*	12.1*	10.9*	10.9*	9.8*	9.8*	8.7*	8.7*											8.0*	8.0*	22.03		
- 4.5	HR			11.5*	11.5*	14.3*	14.3*	18.6*	18.6*	19.6*	19.6*	17.0*	17.0*	14.9*	14.9*	13.2*	13.2*	11.8*	11.8*	10.6*	10.6*	9.4*	9.4*	8.2*	8.2*											7.9*	7.9*	21.29		
- 6.0	HR					15.6*	15.6*	20.0*	20.0*	18.7*	18.7*	16.3*	16.3*	14.4*	14.4*	12.7*	12.7*	11.3*	11.3*	10.0*	10.0*	8.7*	8.7*														7.8*	7.8*	20.42	
- 7.5	HR									17.4*	17.4*	15.3*	15.3*	13.5*	13.5*	11.9*	11.9*	10.5*	10.5*	9.1*	9.1*																8.8*	8.8*	18.31	
- 9.0	HR																																							
- 10.5	HR																																							

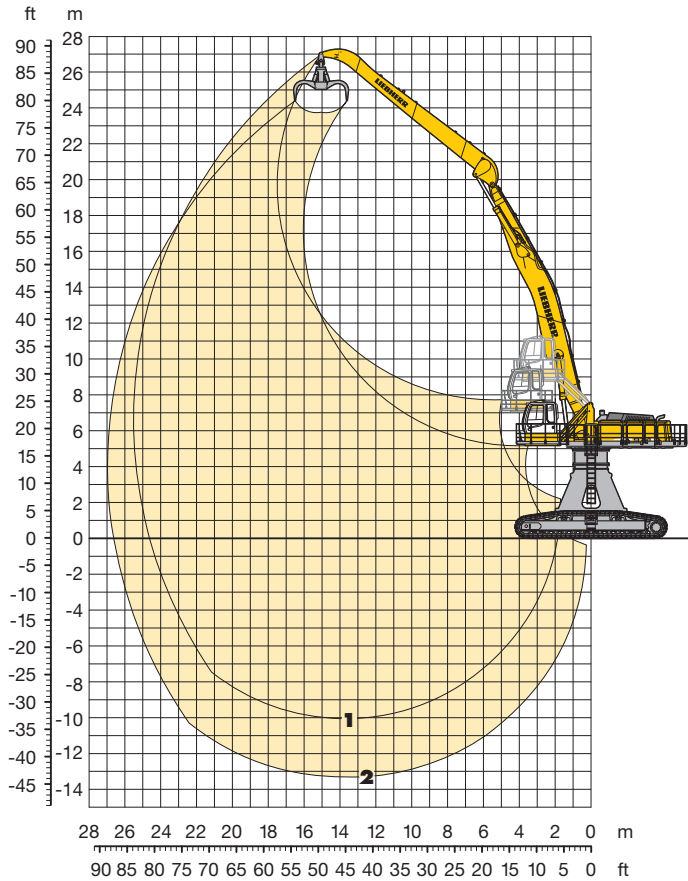
Height Can be slewed through 360° In longitudinal position of undercarriage Max. reach * Limited by hydr. capacity

The lift capacities are stated in metric tonnes (t) on the lifting gear's stick tip, and can be lifted 360° on firm, level supporting surface. Capacities are valid for 750 mm flat pads. Indicated loads are based on ISO 10567 standard and do not exceed 75 % of tipping or 87 % of hydraulic capacity (indicated via *). Lifting capacity of the excavator is limited by machine stability, hydraulic capacity and maximum permissible load of the load hook.

According to European Standard, EN 474-5: In the European Union excavators have to be equipped with an overload warning device, a load diagram and automatic check valves on the hoist cylinders, when they are used for lifting operations which require the use of lifting accessories.

Industrial Attachment

with Industrial-Type Gooseneck Boom 14.00 m with Tower Elevation 0.80 m



Attachment Envelope

- 1 with industrial stick 12.00 m
- 2 with industrial stick 12.00 m and grapple model 75 B

Operating Weight and Ground Pressure

Operating weight includes basic machine with tower elevation 0.80 m, hydraulic cab elevation parallelogram + intermediate piece 0.5 m, counterweight 18.0 t, industrial-type gooseneck boom 14.00 m, industrial stick 12.00 m and grapple model 75 B with 5 open tines 2.00 m³.

Undercarriage		HR	
Pad width	mm	750	1,000
Weight	kg	132,300	136,100
Ground pressure	kg/cm ²	1.21	0.94

Lift Capacities

with Industrial-Type Gooseneck Boom 14.00 m with Tower Elevation 0.80 m

Industrial Stick 12.00 m

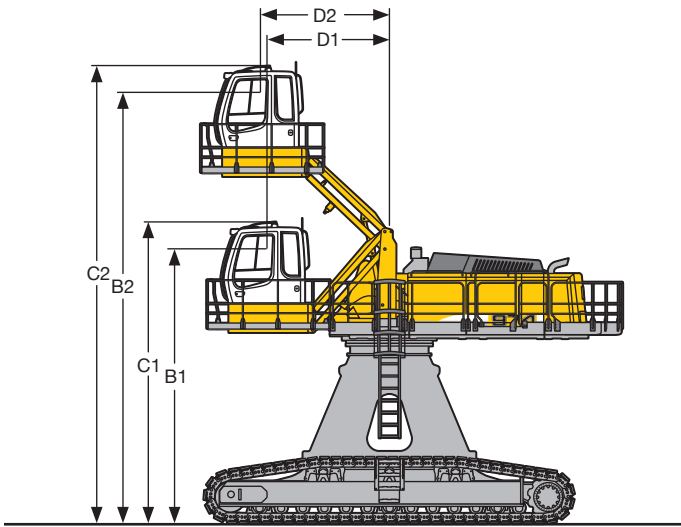
m	Under-carriage	4.5 m		6.0 m		7.5 m		9.0 m		10.5 m		12.0 m		13.5 m		15.0 m		16.5 m		18.0 m		19.5 m		21.0 m		22.5 m		24.0 m		25.5 m		m					
		HR	HR	HR	HR	HR	HR	HR	HR	HR	HR	HR	HR	HR	HR	HR	HR	HR	HR	HR	HR	HR	HR	HR	HR	HR	HR	HR	HR	HR	HR	HR	HR				
28.5	HR																																				
27.0	HR																																				
25.5	HR																	8.0*	8.0*															7.2*	7.2*	16.93	
24.0	HR																				7.7*	7.7*												6.8*	6.8*	18.51	
22.5	HR																				7.9*	7.9*	7.2*	7.2*										6.4*	6.4*	19.84	
21.0	HR																				7.8*	7.8*	7.6*	7.6*										6.2*	6.2*	20.98	
19.5	HR																				7.7*	7.7*	7.5*	7.5*			7.3*	7.3*						6.0*	6.0*	21.96	
18.0	HR																				7.7*	7.7*	7.5*	7.5*	7.3*	7.3*	6.6*	6.6*						5.9*	5.9*	22.79	
16.5	HR																				7.8*	7.8*	7.5*	7.5*	7.3*	7.3*	7.1*	7.1*						5.8*	5.8*	23.49	
15.0	HR																				7.9*	7.9*	7.6*	7.6*	7.3*	7.3*	7.1*	7.1*	6.0*	6.0*				5.8*	5.8*	24.08	
13.5	HR																8.6*	8.6*			8.1*	8.1*	7.7*	7.7*	7.4*	7.4*	7.2*	7.2*	7.0*	7.0*			5.7*	5.7*	24.56		
12.0	HR															9.4*	9.4*	8.8*	8.8*	8.3*	8.3*	7.9*	7.9*	7.6*	7.6*	7.3*	7.3*	7.0*	7.0*				5.8*	5.8*	24.94		
10.5	HR														10.7*	10.7*	9.9*	9.9*	9.2*	9.2*	8.6*	8.6*	8.1*	8.1*	7.7*	7.7*	7.4*	7.4*	7.1*	7.1*			5.8*	5.8*	25.22		
9.0	HR																				8.9*	8.9*	8.3*	8.3*	7.9*	7.9*	7.5*	7.5*	7.2*	7.2*				5.9*	5.9*	25.41	
7.5	HR																				9.2*	9.2*	8.6*	8.6*	8.1*	8.1*	7.6*	7.6*	7.3*	7.3*	6.0*	6.0*	6.0*	6.0*	6.0*	6.0*	25.50
6.0	HR																				9.5*	9.5*	8.8*	8.8*	8.3*	8.3*	7.8*	7.8*	7.3*	7.3*	6.1*	6.1*	6.1*	6.1*	6.1*	6.1*	25.51
4.5	HR																				9.8*	9.8*	9.1*	9.1*	8.4*	8.4*	7.9*	7.9*	7.4*	7.4*				6.3*	6.3*	25.43	
3.0	HR	3.2*	3.2*	6.6*	6.6*	12.9*	12.9*	22.1*	22.1*	18.4*	18.4*	15.7*	15.7*	13.8*	13.8*	12.2*	12.2*	11.0*	11.0*	10.1*	10.1*	9.3*	9.3*	8.6*	8.6*	8.0*	8.0*	7.5*	7.5*				6.5*	6.5*	25.25		
1.5	HR	4.2*	4.2*	6.9*	6.9*	11.5*	11.5*	19.9*	19.9*	19.1*	19.1*	16.3*	16.3*	14.2*	14.2*	12.6*	12.6*	11.3*	11.3*	10.3*	10.3*	9.4*	9.4*	8.7*	8.7*	8.1*	8.1*	7.5*	7.5*				6.7*	6.7*	24.99		
0	HR	5.3*	5.3*	7.6*	7.6*	11.3*	11.3*	17.7*	17.7*	19.6*	19.6*	16.7*	16.7*	14.6*	14.6*	12.9*	12.9*	11.6*	11.6*	10.5*	10.5*	9.6*	9.6*	8.8*	8.8*	8.1*	8.1*	7.4*	7.4*				7.0*	7.0*	24.62		
- 1.5	HR	6.4*	6.4*	8.5*	8.5*	11.7*	11.7*	17.1*	17.1*	19.8*	19.8*	17.0*	17.0*	14.8*	14.8*	13.1*	13.1*	11.7*	11.7*	10.6*	10.6*	9.6*	9.6*	8.8*	8.8*	8.0*	8.0*	7.2*	7.2*				7.1*	7.1*	24.16		
- 3.0	HR	7.6*	7.6*	9.5*	9.5*	12.4*	12.4*	17.2*	17.2*	19.9*	19.9*	17.0*	17.0*	14.9*	14.9*	13.1*	13.1*	11.7*	11.7*	10.6*	10.6*	9.6*	9.6*	8.7*	8.7*	7.8*	7.8*						7.1*	7.1*	23.59		
- 4.5	HR	8.6*	8.6*	10.5*	10.5*	13.3*	13.3*	17.7*	17.7*	19.6*	19.6*	16.9*	16.9*	14.8*	14.8*	13.1*	13.1*	11.7*	11.7*	10.5*	10.5*	9.4*	9.4*	8.5*	8.5*	7.5*	7.5*						7.1*	7.1*	22.90		
- 6.0	HR																																				
- 7.5	HR																																				
- 9.0	HR																																				
- 10.5	HR																																				

Height Can be slewed through 360° In longitudinal position of undercarriage Max. reach * Limited by hydr. capacity

The lift capacities are stated in metric tonnes (t) on the lifting gear's stick tip, and can be lifted 360° on firm, level supporting surface. Capacities are valid for 750 mm flat pads. Indicated loads are based on ISO 10567 standard and do not exceed 75 % of tipping or 87 % of hydraulic capacity (indicated via *). Lifting capacity of the excavator is limited by machine stability, hydraulic capacity and maximum permissible load of the load hook.

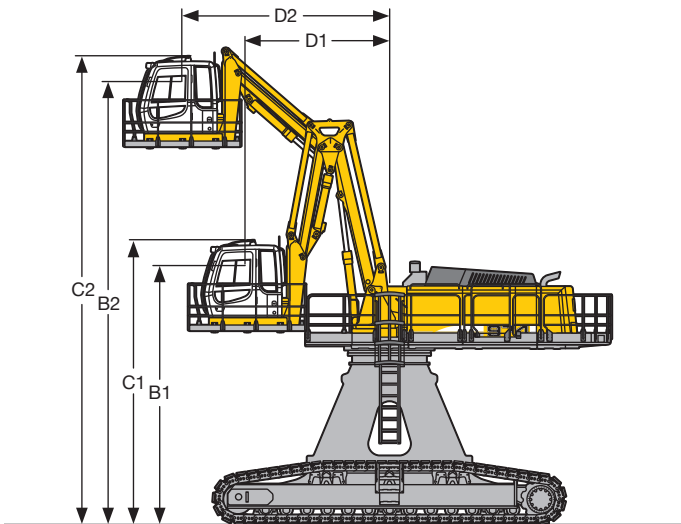
According to European Standard, EN 474-5: In the European Union excavators have to be equipped with an overload warning device, a load diagram and automatic check valves on the hoist cylinders, when they are used for lifting operations which require the use of lifting accessories.

Choice of Cab Elevation and Cab Protection



Hydraulic Cab Elevation Parallelogram + Intermediate Piece 0,5 m

B1	6,290 mm
B2	9,865 mm
C1	6,905 mm
C2	10,480 mm
D1	2,785 mm
D2	2,940 mm

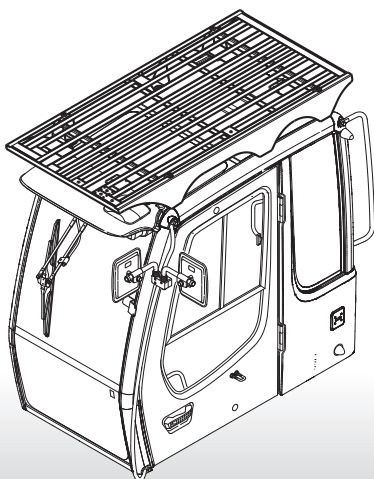


Hydraulic Cab Elevation with Double Parallelogram

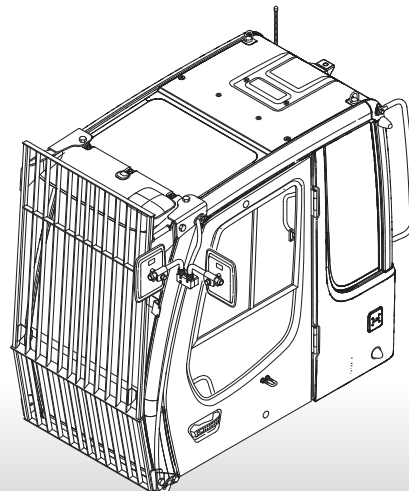
B1	6,230 mm
B2	10,650 mm
C1	6,850 mm
C2	11,270 mm
D1	3,470 mm
D2	5,000 mm

Additional weight in relation to hydraulic cab elevation parallelogram + intermediate piece 0.5 m: 2,600 kg

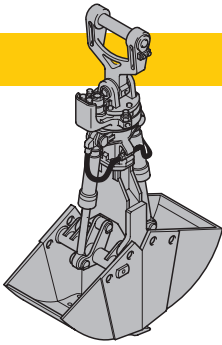
FOPS Guard



Front Guard



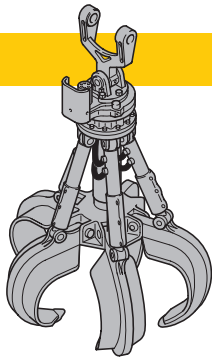
Variety of Tools



Shells for Loose Material

Clamshell Model 25 B (with suspension)

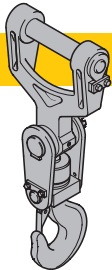
Cutting width	mm	1,700	1,800	2,000	2,000
Capacity	m ³	2.80	3.50	3.00	4.00
Weight	kg	3,450	3,500	3,750	3,750



Multiple Tine Grapples

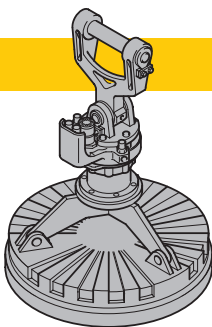
open tines semi-closed tines closed tines

Grapple Model 75 B (with suspension)	Capacity	m ³	open tines			semi-closed tines			closed tines		
			2.00	2.50	3.00	2.00	2.50	3.00	2.00	2.50	3.00
Weight	kg		3,800	3,900	4,000	4,350	4,500	4,650	4,700	4,850	5,000



Crane hook with suspension

Max. load	t	32
Weight	kg	180



Electro-magnets with suspension

Generator up to 33 kW

For further information see color brochure "Add-on tools for material-handling technology". To operate a magnet the installation of a generator is required; please contact your Liebherr dealer or the factory for further information.

Equipment



Undercarriage

Three track guide per track	•
Integrated travel drive	•
Digging locks	•
Lubricated tracks	•
Different flat track pad widths	+



Uppercarriage

Engine hood with lift help	•
Lockable tool box	•
Handrails, non slip surfaces	•
Tool kit	•
Maintenance-free swing brake lock	•
Maintenance-free HD-batteries	•
Sound insulation	•
Electric fuel tank filler pump	+
Pedal controlled positioning swing brake	+
Customized paint – compl. machine	+
Protection for front working light	+



Hydraulics

Electronic pump regulation	•
Stepless work mode selector	•
Pressure storage for controlled lowering of attachments with engine turned off	•
Hydraulic tank shut-off valve	•
Pressure compensation	•
Flow compensation	•
Filter with integrated fine filter area (5 µm)	•
Pressure test ports	•
Bio-degradable hydraulic oils	+
Filter for secondary circuit	+
Extra hydr. control for hydr. swivel	+
Hydraulic drive for generator	+



Engine

Common rail injection	•
Turbo charger	•
Air filter with pre-cleaner, main and safety element	•
Air filter with automatic dust ejector	•
Automatic idling	•
Main switch for electric circuit	•
Cold start aid	•
Conform with standard level IIIA/Tier 3	•
Fuel pre-heater	+
Reversible radiator fan	+



Operator's Cab

Profile and deep drawn component	•
Tinted side windows	•
Armored windshield	•
Door with sliding window	•
Washer-wiper for front and roof window	•
6-way adjustable cloth suspension seat	•
Seat and consoles independently adjustable	•
Coat hook	•
Air conditioning	•
Dome light	•
Sun blinds	•
Radio installation prep-kit	•
Removable handle for travel pedals	•
Cigar lighter and ashtray	•
Removable custom floor mat	•
Storage and literature tray	•
Digital instrumentation	•
Digital instruments for oil temp. engine RPM and oil pressure	•
Digital hour meter visible from outside	•
AM/FM stereo radio w/cassette	+
Electric cool box	+
Air power seat adjustment with heating	+
Warning beacon	+
Additional headlights on cabin roof (front and rear)	+
Upper protection screen (FOPS)	+
Front guard tiltable	+
Electric drive away lock	+
Extinguisher	+



Attachment

Cylinders with shock absorber	•
Sealed pivots	•
Two flood lights on the boom	•
Automatic central lubrication system	•
Regeneration plus	•
Safety check valves	•
Overload warning device	+
Hydraulic quick change tool adapter for grapple	+
Liebherr equipment program	+
Cylinder – rod protection	+

• = Standard, + = Option

Options and/or special attachments, supplied by vendors other than Liebherr, are only to be installed with the knowledge and approval of Liebherr to retain warranty.

Liebherr-France SAS

2, avenue Joseph Rey, B.P. 90287, F-68005 Colmar Cedex
 ☎ +33 389 21 30 30, Fax +33 389 21 37 93
 www.liebherr.com, E-Mail: info.lfr@liebherr.com