

# KC-55713 (-K-3) (-B)

25 tonnes truck cranes "Klintsy" and "Galichanin" on KamAZ and MAZ chassis with 6x4 wheel formula



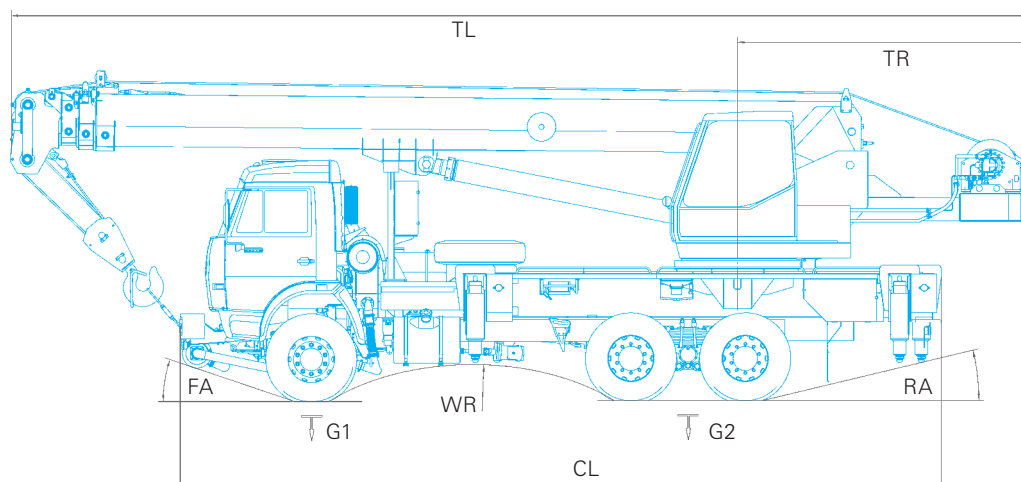
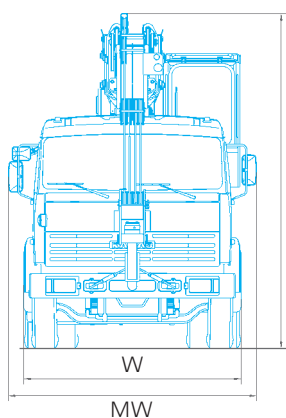
**DUE TO MARKET** demands, in 2009 design bureau create new crane line with 28.0m boom length. Technical characteristics of this models provided below. Among everything this crane has another boom profile. Maximum hook height may be reached in spot on 37.0 meters with installing a 9m jib to main boom

**TWO TRADEMARKS** presented here. The thing is that Galich Autocrane plant design bureau and Klintsi mobile cranes plant design bureau create this model together



KC-55713-1K-3

MODEL	KC-55713-1K-3	KC-55713-1B	KC-55713-6K-3	KC-55713-6B
Producer	Klintsy	Galichanin	Klintsy	Galichanin
Chassis	KamAZ-65115	KamAZ-65115	MAZ-6303	MAZ-6303
Total Length (TL), mm	11800	11800	11800	11800
Chassis Length (CL), mm	8800	8800	8790	8700
Turn radius (TR), mm	3470	3600	3470	3600
Height (H), mm	3820	3820	3820	3950
Width (W), mm	2500	2500	2500	2500
Max Width (MW), mm	2900	2860	2900	2886
Front angle (FA)	19°	19°	27°	32°
Rear angle (RA)	14°	14°	16°	15°
Front axle weight (G1), t	5,3	5,75	6	5,99
Rear double axle weight (G2), t	17,83	17,66	17,85	18,96
Wheel Radius (WR), mm	3450	2500	3200	3560



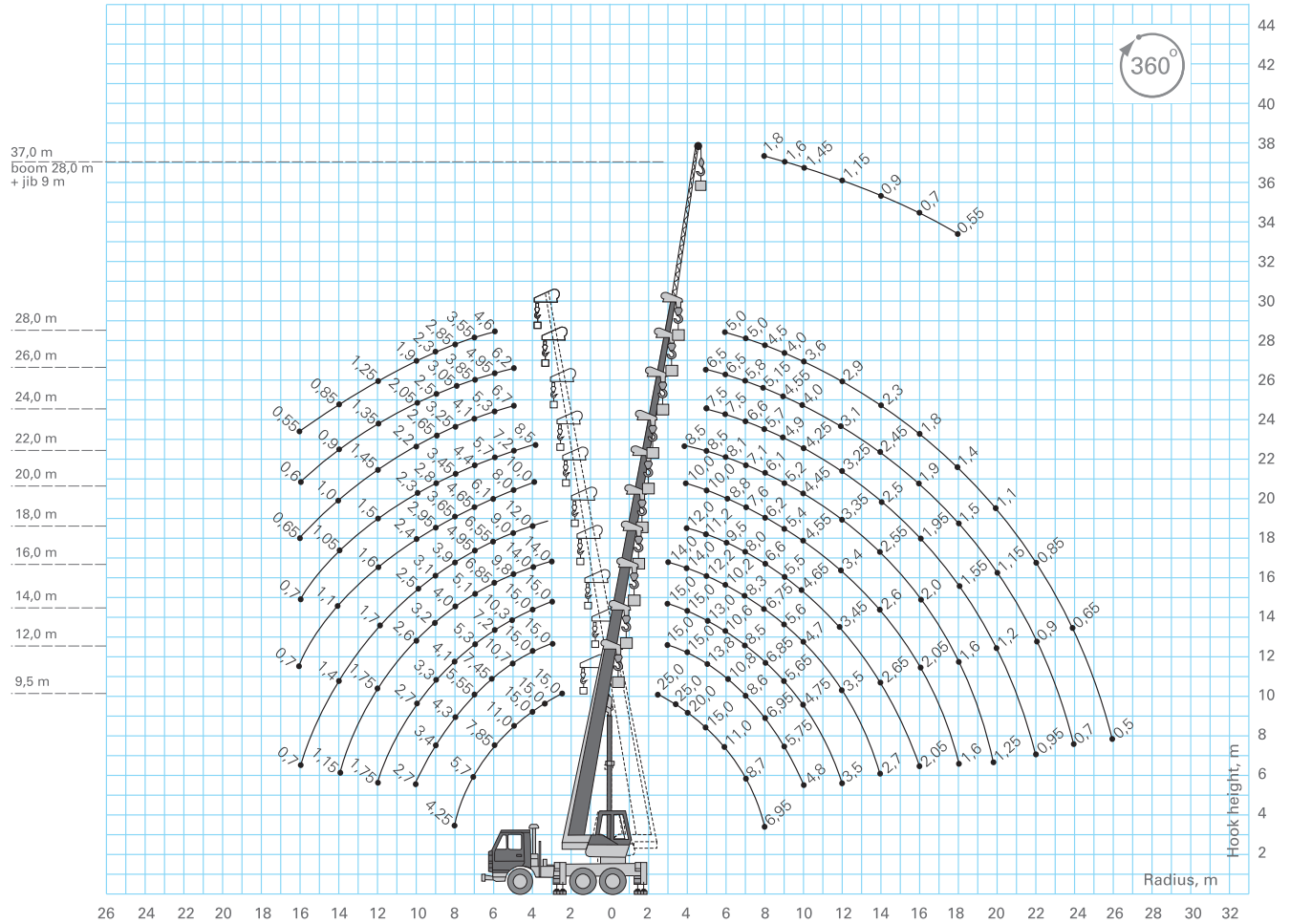
GALICH AUTOCRANE PLANT



KLINTSI MOBILE CRANES PLANT



LIFTING CHART OF KC-55713 (-K-3),  
KC-55713 (-B) PRODUCT LINE



KC-55713 (-K-3), KC-55713 (-B) CRANE LINE  
MOUNTED ON KAMAZ-65115 | MAZ-6303

Lifting capacity.....25 t  
Lifting moment.....80 t/m  
Boom length.....9,5–28,0 m  
Working radius.....3,2–26,0 m  
Jib length.....9 m

Max hook height:

- with 28 m main boom ..... 28,3 m
- with 28 m main boom & 9 m jib..... 37,3 m

Lifting and lowering speed ..... 6,0–40,0 m/min  
Slewing speed.....1,4 min<sup>-1</sup>  
Explotation temperature ..... from -40 to +40 °C

Chassis.....KamAZ-65115 | MAZ-6303  
Wheel formula.....6 x 4  
Engine.....KamAZ-740 | YAMZ-236NE  
Transportation speed.....60 km/h  
Weight of crane in transport position ..... — \*

\* For counting the weight for any model look at the table with dimensions

SUPPORTING BASIS OF KC-55713 (-K-3),  
KC-55713 (-B) PRODUCT LINE

