

KC-65713-1

50 tonnes truck crane "Galichanin" on Kamaz-65201



CRANE MODEL KC-65713-1 is the first 50 tonnes lifting capacity crane in production line of Galich Autocrane Plant. As all products, that are bearing name "Galichanin" this model is made for customers who already have 50 tonnes cranes in their vehicle park. Big outrigger area 7,2x7 m allow to work in 360° working zone

NOT ONLY AMONG Russian producers this model may be competitive. Great lifting characteristics and quality of the crane not yielding to foreign crane models



KC-65713-1

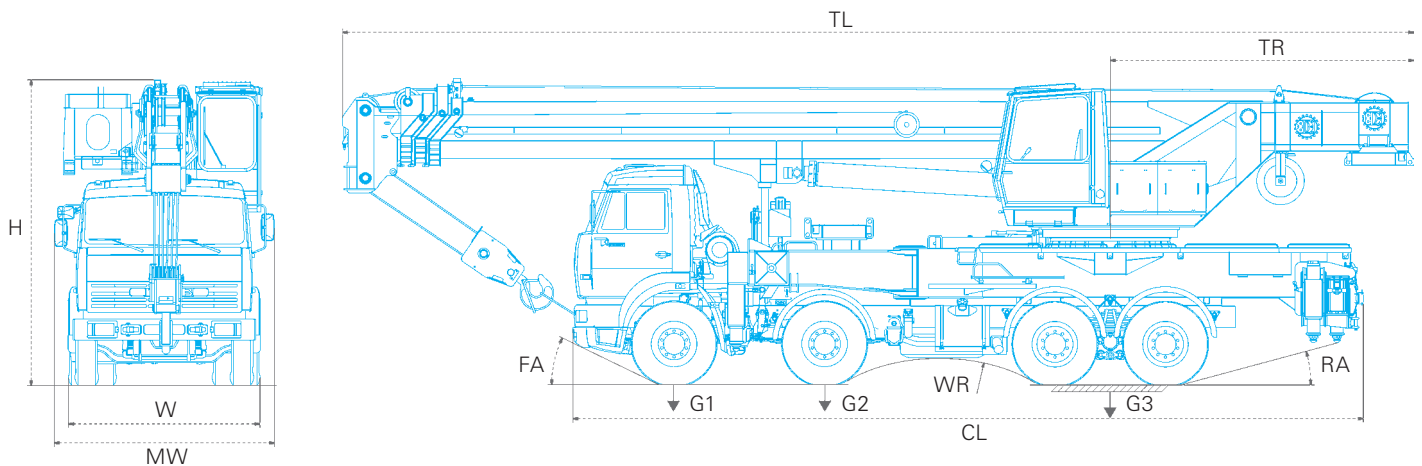


GALICH AUTOCRANE PLANT

MODEL

KC-65713-1

Total Length (TL), mm	13900
Chassis Length (CL), mm	10300
Turn radius (TR), mm	3950
Height (H), mm	3980
Width (W), mm	2500
Max Width (MW), mm	2860
Front angle (FA)	25°
Rear angle (RA)	15°
Front axle weight (G1), t	7,75
Second axle weight (G2), t	7,75
Rear double axle weight (G3), t	25
Wheel Radius (WR), mm	2600





KC-65713-1 CRANE LINE
MOUNTED ON KAMAZ-65201

LIFTING CHART
OF KC-65713-1 PRODUCT LINE

Lifting capacity.....50t
Lifting moment.....160t/m
Boom length.....11,5–34,1m
Working radius.....3,2–32,0m
Jib length.....9,1 | 15,1m

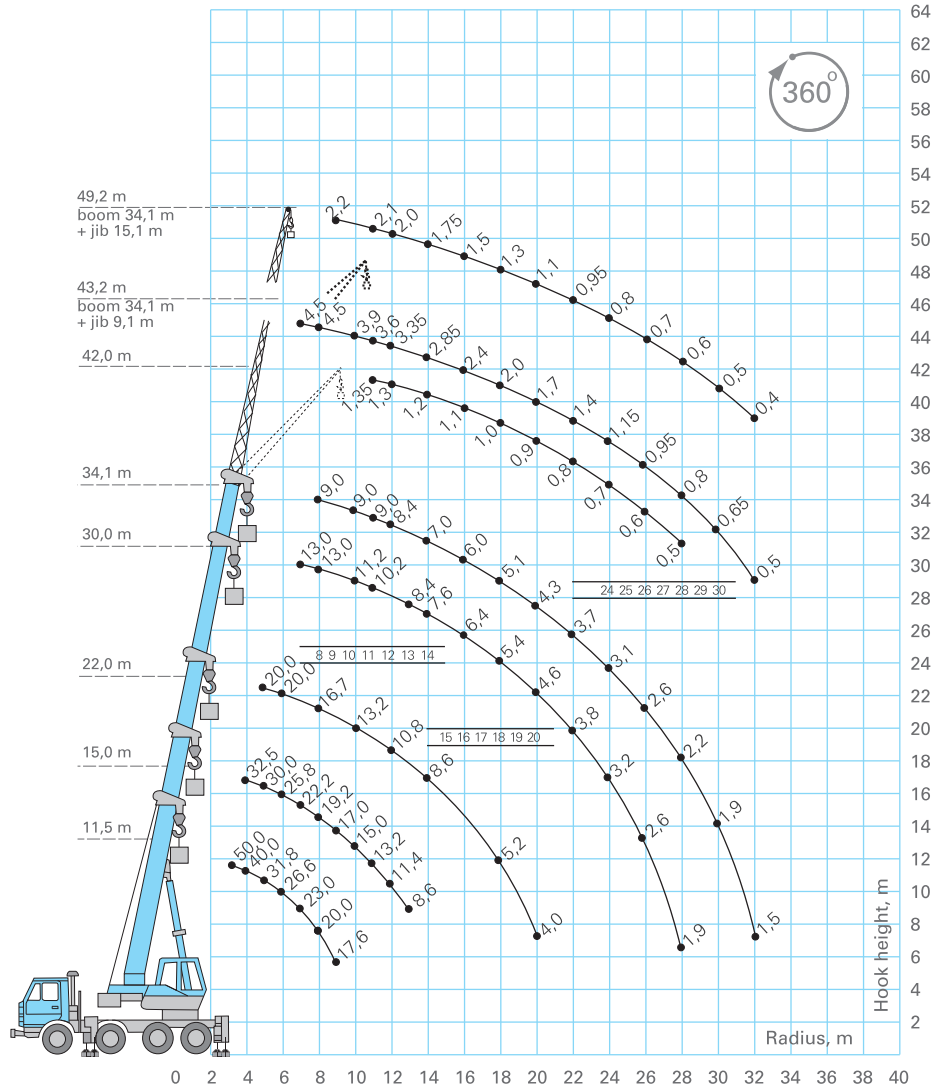
Max hook height:*

- with 34m main boom 35m
- with 34m main boom & 9m jib 44,4m
- with 34m main boom & 15.1m jib 50,4m

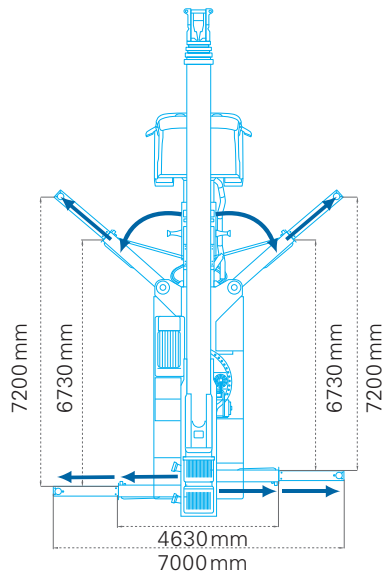
Lifting and lowering speed..... 3,6–38,0m/min
Slewing speed..... 1,2 min⁻¹
Explotation temperature from –40 to +40°C

Chassis KamAZ-65201
Wheel formula..... 8x4
Engine..... KamAZ-740
Transportation speed..... 40 km/h
Weight of crane in transport position..... 36,5 t

* Additional 5 tonnes counterweight is available for customers
Additional winch can be bought from the seller



SUPPORTING BASIS
OF KC-65713-1 PRODUCT LINE



KC-65713-1